

# Converting Colors

Hex(E3BFBB)

Have a look what the booklet for  
Hex(E3BFBB) contains.

|  |    |
|--|----|
| <b>Hex(E3BFBB)</b> .....                       | 3  |
| <i><b>Conversions</b></i> .....                | 4  |
| <i><b>Details</b></i> .....                    | 6  |
| <i><b>Harmonies</b></i> .....                  | 11 |
| <i><b>Previews</b></i> .....                   | 23 |
| <i><b>Color Blindness Simulation</b></i> ..... | 26 |
| <i><b>CSS Examples</b></i> .....               | 29 |

# **Color**

**Hex(E3BFBB)**

# Conversions

## Conversions Part 1

| Format      | Color                     |
|-------------|---------------------------|
| Hex         | E3BFBB                    |
| RGB         | 227, 191, 187             |
| RGB Percent | 89%, 75%, 73%             |
| CMY         | 0.1098, 0.2510, 0.2667    |
| CMYK        | 0.00, 0.16, 0.18, 0.11    |
| HSL         | 6°, 42%, 81%              |
| HSV         | 6°, 18%, 89%              |
| XYZ         | 59.2790, 57.1804, 54.9263 |
| YIQ         | 201.3080, 22.7400, 6.3880 |

# Conversions

## Conversions Part 2

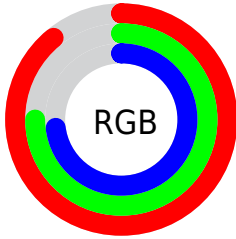
| Format                              | Color                         |
|-------------------------------------|-------------------------------|
| R <sub>Y</sub> B                    | 227, 191, 187                 |
| Decimal                             | 14925755                      |
| CIE Lab                             | 80.28, 12.19, 6.79            |
| CIE LCh                             | 80, 13.953, 29.127            |
| Yxy                                 | 57.1804, 0.3459,<br>0.3336    |
| Android<br>(android.graphics.Color) | 4293115835<br>(0xFFE3BFBB)    |
| YUV                                 | 201.3080, -7.0538,<br>22.5319 |
| Hunter-Lab                          | 75.6177, 7.6006,<br>9.8660    |

# Details

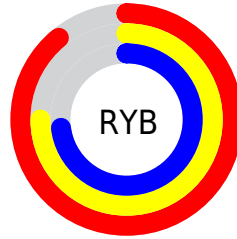
The Hex color **E3BFBB** is a light color, and the websafe version is hex **FFCCCC**. A complement of this color would be **BBDFF3**, and the grayscale version is **C9C9C9**.

A 20% lighter version of the original color is **FFF7F3**, and **AB8A86** is the 20% darker color. If you saturate the color by 10%, you get **E3ABA4**, and if you desaturate by 10%, it is **E3D3D2**.

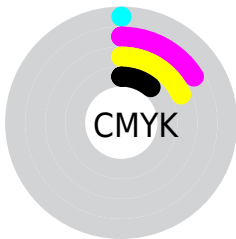
# Distribution



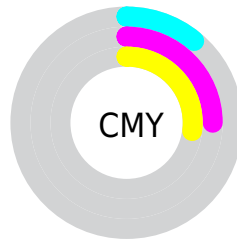
- Red (89%)
- Green (75%)
- Blue (73%)



- Red (89%)
- Yellow (75%)
- Blue (73%)



- Cyan (0%)
- Magenta (16%)
- Yellow (18%)
- Black (11%)



- Cyan (11%)
- Magenta (25%)
- Yellow (27%)

# Brightness & Saturation Gradients

These gradients show how the Hex color E3BFBB changes by changing the brightness by 10 percent. The first figure shows a shift by +10% for each color and the second figure -10%.

Similar to the brightness gradients but the following saturation gradients show a change of the Hex color E3BFBB by changing the saturation by 10% instead.



 E3BFBB

 E3BFBB

FFFFFF

 C7A4A0

 FFF7F3

 AB8A86

 90706D

 765854

 5D403D

 452A27

 2E1513

 1A0000

 000000

 E3BFBB

 E3BFBB

 E3ABA4

 E3D3D2

 E3968E

 E3E8E8

 E38277

 E3FCFF

 E36D60

 E3FFFF

 E3594A

 E34433

 E3301C

 E31C05

 E31700

# Harmonies

## Analogous

The Analogous color harmony consists of three colors that are next to each other on the color wheel.



E1BEC8



E3BFBB



DEC2B1

# Triad

The Triadic color harmony groups three colors that are evenly spaced from another and form a triangle on the color wheel.



E3BFBB



B5CDB9



B9C8E1

# Complementary

The Complementary color scheme is a pair of colors which are on the opposite of each other on the color wheel.



E3BFBB



BBD FE3

# Split Complementary

Split-complementary colors differ from the complementary color scheme. The scheme consists of three colors, the original color and two neighbors of the complement color.



ACCCDD



E3BFBB



AACFC6

# Square

The Square scheme is like the rectangle color scheme, but the four colors are evenly spaced on the color wheel.



E3BFBB



C4CAB0



A6CED3



C9C4DE

# Rectangle

The Rectangle color scheme consists of four colors that form a rectangle on the color wheel.



E3BFBB



D7C5AE



A6CED3



B4CAE0

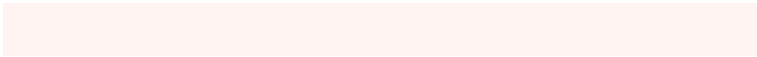


# Sweetspot

The Sweet Spot groups the original color and five complimentary colors.



E3BFBB



FFF4F2



E3BBDF



807978



000000



808080



# Same Dimension

The Same Dimension uses a secret algorithm to generate beautiful new colors.



E3BFBB



FFCFC9



E3D3BB



736867



B31200



330500

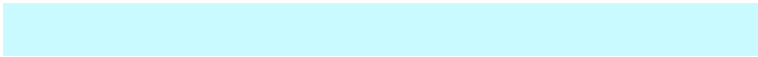


# Inverse Universe

The Inverse Universe completely reimagines the original color for something new.



BBDFE3



C9FAFF



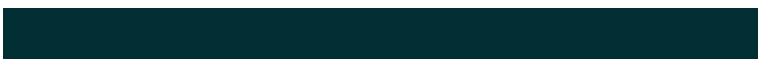
BBCBE3



677273



00A1B3

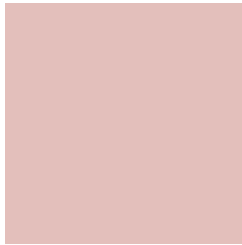


002E33



# Previews

## White Background



This preview shows how the Hex color E3BFBB looks on a white background.

## Color Contrast Check

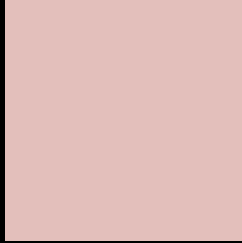
Large Text (above 18pt) WCAG AA × Fail

Any Text WCAG AA × Fail

Large Text (above 18pt) WCAG AAA × Fail

Any Text WCAG AAA × Fail

# Black Background



This preview shows how the Hex color E3BFBB looks on a black background.

## Color Contrast Check

Large Text (above 18pt) WCAG AA ✓ Pass

Any Text WCAG AA ✓ Pass

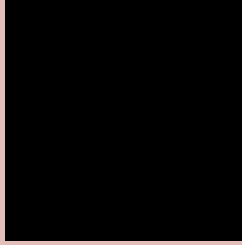
Large Text (above 18pt) WCAG AAA ✓ Pass

Any Text WCAG AAA ✓ Pass

If you want to check with other color combinations, try the [Color Contrast Checker](#).



## Hex E3BFBB Background



This preview shows how black text looks on a background with the Hex color E3BFBB.

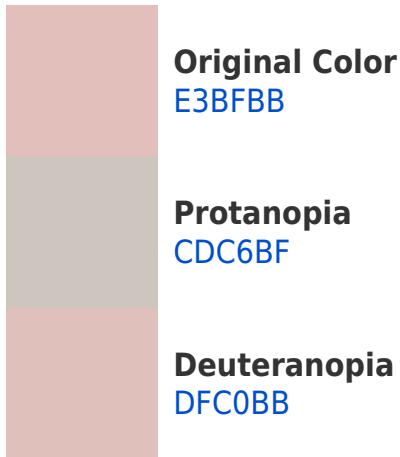


This preview shows how white text looks on a background with the Hex color E3BFBB.

# Color Blindness Simulation

Color vision deficiency is a very complex topic, and I could not describe the different causes any better than Wikipedia does, so if you want to learn more, you should check out their [article about color blindness](#).

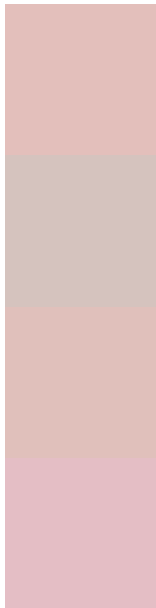
## Dichromacy





**Tritanopia**  
E5BDCB

# Trichromacy



**Original Color**  
E3BFBB

**Protanomaly**  
D5C3BE

**Deuteranomaly**  
E0C0BB

**Tritanomaly**  
E4BEC5

# Monochromacy



**Original Color**  
E3BFBB

**Achromatopsia**  
C9C9C9

**Achromatomaly**  
D2C5C4

# CSS Examples

## Text

The CSS property to change the color of the text to Hex E3BFBB is called "color". The color property can be set on classes, ids or directly on the HTML element.

This example shows how text in the color #E3BFBB looks like.

```
.text, #text, p{  
  color:#E3BFBB  
}
```

If you want to add a text shadow in that color use the text-shadow property, you can generate a text shadow directly with our [CSS Text Shadow Generator](#).

Here you see how black text with a 4 pixel #E3BFBB colored shadow looks like.

```
.shadow{ text-shadow: 4px 4px 2px #E3BFBB  
}
```

## Border

The CSS property to change the border of an element to Hex E3BFBB is called "border". The border property can be set on classes, ids or directly on the HTML element.

This example shows the color as border, it can be applied via the CSS property "border" or "border-color".

```
.border, #border, table{ border:4px solid  
#E3BFBB }
```

If only the border color should be changed use the property `border-color`.

```
.border{ border-color:#E3BFBB }
```

If you want to add a box shadow in that color use:

Here you see how a box with a 4 pixel #E3BFBB colored shadow looks like.

```
.boxshadow{ -moz-box-shadow:4px 4px 4px  
4px #E3BFBB; -webkit-box-shadow:4px 4px  
4px 4px #E3BFBB; box-shadow:4px 4px 4px  
4px #E3BFBB }
```

# Background

The CSS property to change the background color of an element to Hex E3BFBB is called "background". The background property can be set on classes, ids or directly on the HTML element.

```
.background, #background, body{  
background:#E3BFBB }
```

If only the background color should be changed can be used:

```
.background{ background-color:#E3BFBB }
```

This example shows the color as background, it is applied via the CSS property "background".

To optimize and compress your CSS code, you can use our [online CSS compressor and optimizer](#) based on csstidy. If you want to create a linear or radial gradient as background or border, check our [CSS Gradient Generator](#).



Hey! You found this booklet interesting? Support Converting Colors with the new Membership Option!

The pro membership hides all ads, plus gives you double the colors in the color bucket, and more awesome pro features!

**[Learn more, Memberships starting at \\$2.50/m!](#)**

**Follow me  
on Twitter!**

@ConvertingColor