

# Converting Colors

Hex(E3BFCB)

Have a look what the booklet for  
Hex(E3BFCB) contains.

<b>Hex(E3BFCB)</b> .....	3
<i><b>Conversions</b></i> .....	4
<i><b>Details</b></i> .....	6
<i><b>Harmonies</b></i> .....	11
<i><b>Previews</b></i> .....	23
<i><b>Color Blindness Simulation</b></i> .....	26
<i><b>CSS Examples</b></i> .....	29

# **Color**

**Hex(E3BFCB)**

# Conversions

## Conversions Part 1

Format	Color
Hex	E3BFCB
RGB	227, 191, 203
RGB Percent	89%, 75%, 80%
CMY	0.1098, 0.2510, 0.2039
CMYK	0.00, 0.16, 0.11, 0.11
HSL	340°, 39%, 82%
HSV	340°, 16%, 89%
XYZ	61.0888, 57.9043, 64.4568
YIQ	203.1320, 17.6040, 11.3640

# Conversions

## Conversions Part 2

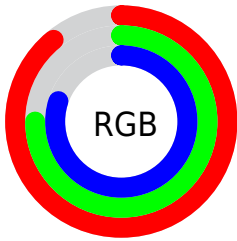
<b>Format</b>	<b>Color</b>
<b>R<sub>YB</sub></b>	227, 191, 203
Decimal	14925771
CIE <sub>Lab</sub>	80.69, 14.75, -1.23
CIE <sub>LCh</sub>	81, 14.800, 355.223
Yxy	57.9043, 0.3330, 0.3156
Android (android.graphics.Color)	4293115851 (0xFFE3BFCE)
YUV	203.1320, -0.0651, 20.9322
Hunter-Lab	76.0949, 10.1335, 3.0443

# Details

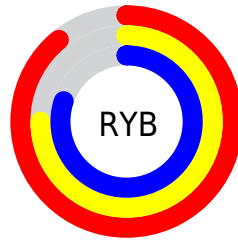
The Hex color **E3BFCB** is a light color, and the websafe version is hex **FFCCCC**. A complement of this color would be **BFE3D7**, and the grayscale version is **CBCBCB**.

A 20% lighter version of the original color is **FFF7FF**, and **AB8995** is the 20% darker color. If you saturate the color by 10%, you get **E3A8BC**, and if you desaturate by 10%, it is **E3D6DA**.

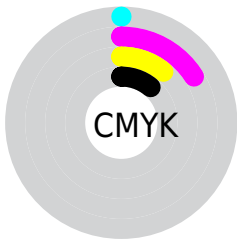
# Distribution



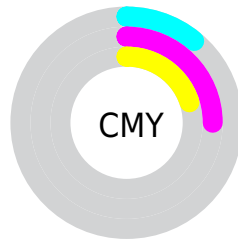
- Red (89%)
- Green (75%)
- Blue (80%)



- Red (89%)
- Yellow (75%)
- Blue (80%)



- Cyan (0%)
- Magenta (16%)
- Yellow (11%)
- Black (11%)



- Cyan (11%)
- Magenta (25%)
- Yellow (20%)

# Brightness & Saturation Gradients

These gradients show how the Hex color E3BFCB changes by changing the brightness by 10 percent. The first figure shows a shift by +10% for each color and the second figure -10%.

Similar to the brightness gradients but the following saturation gradients show a change of the Hex color E3BFCB by changing the saturation by 10% instead.



 E3BFCB

FFFFFF

 FFF7FF

 E3BFCB

 C7A4B0

 AB8995

 91707B

 775762

 5E404B

 462A34

 2F151F

 1D0006

 000000

 E3BFCB

 E3BFCB

 E3A8BC

 E3D6DA

 E392AD

 E3ECE9

 E37B9E

 E3FFF8

 E3648E

 E3FFFF

 E34E7F

 E33770

 E32061

 E30952

 E3004C

# Harmonies

## Analogous

The Analogous color harmony consists of three colors that are next to each other on the color wheel.



D8C1D8



E3BFCB



E6BFBD

# Triad

The Triadic color harmony groups three colors that are evenly spaced from another and form a triangle on the color wheel.



E3BFCB



C7CBAF



A9CEDE

# Complementary

The Complementary color scheme is a pair of colors which are on the opposite of each other on the color wheel.



E3BFCB



BFE3D7

# Split Complementary

Split-complementary colors differ from the complementary color scheme. The scheme consists of three colors, the original color and two neighbors of the complement color.



A5D0D3



E3BFCB



B7CFB8

# Square

The Square scheme is like the rectangle color scheme, but the four colors are evenly spaced on the color wheel.



E3BFCB



D6C7AD



AAD0C5



B7CAE3

# Rectangle

The Rectangle color scheme consists of four colors that form a rectangle on the color wheel.



E3BFCB



E4C1B5



AAD0C5



A7CFDB



# Sweetspot

The Sweet Spot groups the original color and five complimentary colors.



E3BFCB



FFF2F7



D7BFE3



80787A



000000



808080



# Same Dimension

The Same Dimension uses a secret algorithm to generate beautiful new colors.



E3BFCB



FFCFDF



E3C5BF



73676B



B3003C



330011



# Inverse Universe

The Inverse Universe completely reimagines the original color for something new.



E3BFCB



FFCFDF



BFDDE3



73676B



B3003C

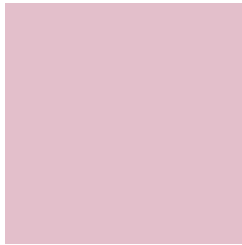


330011



# Previews

## White Background



This preview shows how the Hex color E3BFCB looks on a white background.

## Color Contrast Check

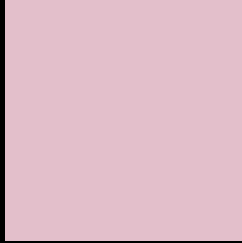
Large Text (above 18pt) WCAG AA × Fail

Any Text WCAG AA × Fail

Large Text (above 18pt) WCAG AAA × Fail

Any Text WCAG AAA × Fail

# Black Background



This preview shows how the Hex color E3BFCB looks on a black background.

## Color Contrast Check

Large Text (above 18pt) WCAG AA ✓ Pass

Any Text WCAG AA ✓ Pass

Large Text (above 18pt) WCAG AAA ✓ Pass

Any Text WCAG AAA ✓ Pass

If you want to check with other color combinations, try the [Color Contrast Checker](#).



## Hex E3BFCB Background



This preview shows how black text looks on a background with the Hex color E3BFCB.

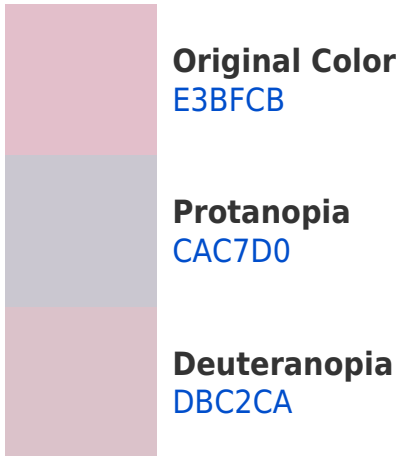


This preview shows how white text looks on a background with the Hex color E3BFCB.

# Color Blindness Simulation

Color vision deficiency is a very complex topic, and I could not describe the different causes any better than Wikipedia does, so if you want to learn more, you should check out their [article about color blindness](#).

## Dichromacy





**Tritanopia**  
E3BFCD

# Trichromacy



**Original Color**  
E3BFCB

**Protanomaly**  
D3C4CE

**Deuteranomaly**  
DEC1CA

**Tritanomaly**  
E3BFCC

# Monochromacy



**Original Color**  
E3BFCB

**Achromatopsia**  
CBCBCB

**Achromatomaly**  
D4C7CB

# CSS Examples

## Text

The CSS property to change the color of the text to Hex E3BFCB is called "color". The color property can be set on classes, ids or directly on the HTML element.

This example shows how text in the color #E3BFCB looks like.

```
.text, #text, p{  
    color:#E3BFCB  
}
```

If you want to add a text shadow in that color use the text-shadow property, you can generate a text shadow directly with our [CSS Text Shadow Generator](#).

Here you see how black text with a 4 pixel #E3BFCB colored shadow looks like.

```
.shadow{ text-shadow: 4px 4px 2px #E3BFCB
}
```

## Border

The CSS property to change the border of an element to Hex E3BFCB is called "border". The border property can be set on classes, ids or directly on the HTML element.

This example shows the color as border, it can be applied via the CSS property "border" or "border-color".

```
.border, #border, table{ border:4px solid
#E3BFCB }
```

If only the border color should be changed use the property `border-color`.

```
.border{ border-color:#E3BFCB }
```

If you want to add a box shadow in that color use:

Here you see how a box with a 4 pixel #E3BFCB colored shadow looks like.

```
.boxshadow{ -moz-box-shadow:4px 4px 4px  
4px #E3BFCB; -webkit-box-shadow:4px 4px  
4px 4px #E3BFCB; box-shadow:4px 4px 4px  
4px #E3BFCB }
```

# Background

The CSS property to change the background color of an element to Hex E3BFCB is called "background". The background property can be set on classes, ids or directly on the HTML element.

```
.background, #background, body{  
background:#E3BFCB }
```

If only the background color should be changed can be used:

```
.background{ background-color:#E3BFCB }
```

This example shows the color as background, it is applied via the CSS property "background".

To optimize and compress your CSS code, you can use our [online CSS compressor and optimizer](#) based on csstidy. If you want to create a linear or radial gradient as background or border, check our [CSS Gradient Generator](#).



Hey! You found this booklet interesting? Support Converting Colors with the new Membership Option!

The pro membership hides all ads, plus gives you double the colors in the color bucket, and more awesome pro features!

**[Learn more, Memberships starting at \\$2.50/m!](#)**

**Follow me  
on Twitter!**

@ConvertingColor