

Converting Colors

Hex(E3C1B8)

Have a look what the booklet for
Hex(E3C1B8) contains.

Hex(E3C1B8)	3
<i>Conversions</i>	4
<i>Details</i>	6
<i>Harmonies</i>	11
<i>Previews</i>	23
<i>Color Blindness Simulation</i>	26
<i>CSS Examples</i>	29

Color

Hex(E3C1B8)

Conversions

Conversions Part 1

Format	Color
Hex	E3C1B8
RGB	227, 193, 184
RGB Percent	89%, 76%, 72%
CMY	0.1098, 0.2431, 0.2784
CMYK	0.00, 0.15, 0.19, 0.11
HSL	13°, 43%, 81%
HSV	13°, 19%, 89%
XYZ	59.4002, 57.9315, 53.3986
YIQ	202.1400, 23.1530, 4.4090

Conversions

Conversions Part 2

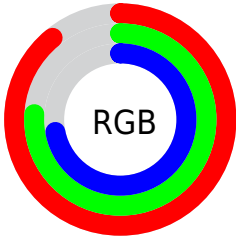
Format	Color
R _Y B	227, 195, 184
Decimal	14926264
CIE Lab	80.70, 10.67, 9.01
CIE LCh	81, 13.963, 40.162
Yxy	57.9315, 0.3479, 0.3393
Android (android.graphics.Color)	4293116344 (0xFFE3C1B8)
YUV	202.1400, -8.9430, 21.8022
Hunter-Lab	76.1128, 6.1084, 11.6827

Details

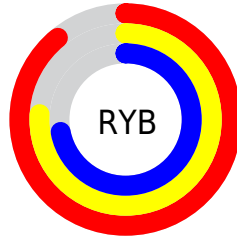
The Hex color **E3C1B8** is a light color, and the websafe version is hex **FFCCCC**. A complement of this color would be **B8DAE3**, and the grayscale version is **CACACA**.

A 20% lighter version of the original color is **FFF9F0**, and **AB8B83** is the 20% darker color. If you saturate the color by 10%, you get **E3AFA1**, and if you desaturate by 10%, it is **E3D3CF**.

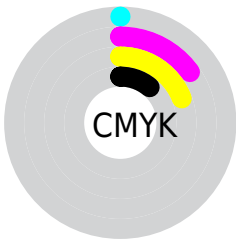
Distribution



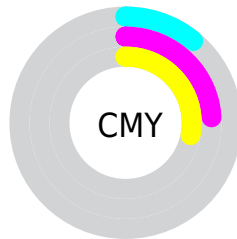
- Red (89%)
- Green (76%)
- Blue (72%)



- Red (89%)
- Yellow (76%)
- Blue (72%)



- Cyan (0%)
- Magenta (15%)
- Yellow (19%)
- Black (11%)



- Cyan (11%)
- Magenta (24%)
- Yellow (28%)

Brightness & Saturation Gradients

These gradients show how the Hex color E3C1B8 changes by changing the brightness by 10 percent. The first figure shows a shift by +10% for each color and the second figure -10%.

Similar to the brightness gradients but the following saturation gradients show a change of the Hex color E3C1B8 by changing the saturation by 10% instead.

 E3C1B8

FFFFFF

 FFF9F0

 E3C1B8

 C7A69D

 AB8B83

 90726A

 765952

 5D423B

 452C25

 2E1710

 190000

 000000

 E3C1B8

 E3C1B8

 E3AFA1

 E3D3CF

 E39D8B

 E3E5E5

 E38B74

 E3F7FC

 E3795D

 E3FFFF

 E36746

 E35530

 E34319

 E33102

 E33000

Harmonies

Analogous

The Analogous color harmony consists of three colors that are next to each other on the color wheel.



E4BFC4



E3C1B8



DBC5B0

Triad

The Triadic color harmony groups three colors that are evenly spaced from another and form a triangle on the color wheel.



E3C1B8



B1CFBF



C0C8E2

Complementary

The Complementary color scheme is a pair of colors which are on the opposite of each other on the color wheel.



E3C1B8



B8DAE3

Split Complementary

Split-complementary colors differ from the complementary color scheme. The scheme consists of three colors, the original color and two neighbors of the complement color.



B1CCE0



E3C1B8



A9D0CC

Square

The Square scheme is like the rectangle color scheme, but the four colors are evenly spaced on the color wheel.



E3C1B8



BFCDB4



A8CFD9



D0C4DC

Rectangle

The Rectangle color scheme consists of four colors that form a rectangle on the color wheel.



E3C1B8



D3C7AE



A8CFD9



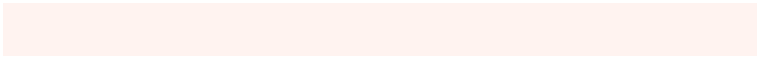
BBC9E2

Sweetspot

The Sweet Spot groups the original color and five complimentary colors.



E3C1B8



FFF3F0



E3B8DA



807877



000000



808080

Same Dimension

The Same Dimension uses a secret algorithm to generate beautiful new colors.



E3C1B8



FFD1C4



E3D6B8



736A67



B32500



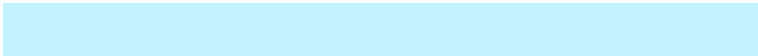
330B00

Inverse Universe

The Inverse Universe completely reimagines the original color for something new.



B8DAE3



C4F3FF



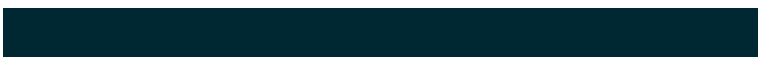
B8C5E3



677073



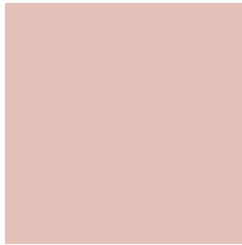
008DB3



002833

Previews

White Background



This preview shows how the Hex color E3C1B8 looks on a white background.

Color Contrast Check

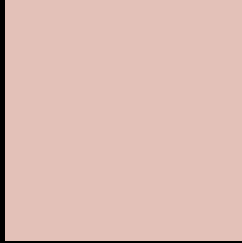
Large Text (above 18pt) WCAG AA × Fail

Any Text WCAG AA × Fail

Large Text (above 18pt) WCAG AAA × Fail

Any Text WCAG AAA × Fail

Black Background



This preview shows how the Hex color E3C1B8 looks on a black background.

Color Contrast Check

Large Text (above 18pt) WCAG AA ✓ Pass

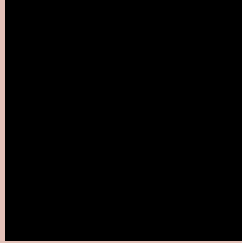
Any Text WCAG AA ✓ Pass

Large Text (above 18pt) WCAG AAA ✓ Pass

Any Text WCAG AAA ✓ Pass

If you want to check with other color combinations, try the [Color Contrast Checker](#).

Hex E3C1B8 Background



This preview shows how black text looks on a background with the Hex color E3C1B8.

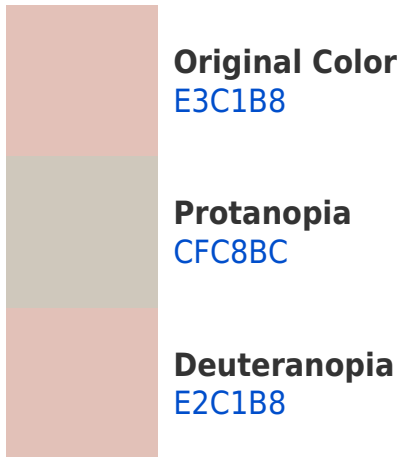


This preview shows how white text looks on a background with the Hex color E3C1B8.

Color Blindness Simulation

Color vision deficiency is a very complex topic, and I could not describe the different causes any better than Wikipedia does, so if you want to learn more, you should check out their [article about color blindness](#).

Dichromacy





Tritanopia
E6BECD

Trichromacy



Original Color
E3C1B8

Protanomaly
D6C5BB

Deuteranomaly
E2C1B8

Tritanomaly
E5BFC5

Monochromacy



Original Color
E3C1B8

Achromatopsia
CACACA

Achromatomaly
D3C7C3

CSS Examples

Text

The CSS property to change the color of the text to Hex E3C1B8 is called "color". The color property can be set on classes, ids or directly on the HTML element.

This example shows how text in the color #E3C1B8 looks like.

```
.text, #text, p{  
    color:#E3C1B8  
}
```

If you want to add a text shadow in that color use the text-shadow property, you can generate a text shadow directly with our [CSS Text Shadow Generator](#).

Here you see how black text with a 4 pixel #E3C1B8 colored shadow looks like.

```
.shadow{ text-shadow: 4px 4px 2px #E3C1B8
}
```

Border

The CSS property to change the border of an element to Hex E3C1B8 is called "border". The border property can be set on classes, ids or directly on the HTML element.

This example shows the color as border, it can be applied via the CSS property "border" or "border-color".

```
.border, #border, table{ border:4px solid
#E3C1B8 }
```

If only the border color should be changed use the property `border-color`.

```
.border{ border-color:#E3C1B8 }
```

If you want to add a box shadow in that color use:

Here you see how a box with a 4 pixel #E3C1B8 colored shadow looks like.

```
.boxshadow{ -moz-box-shadow:4px 4px 4px  
4px #E3C1B8; -webkit-box-shadow:4px 4px  
4px 4px #E3C1B8; box-shadow:4px 4px 4px  
4px #E3C1B8 }
```

Background

The CSS property to change the background color of an element to Hex E3C1B8 is called "background". The background property can be set on classes, ids or directly on the HTML element.

```
.background, #background, body{  
background:#E3C1B8 }
```

If only the background color should be changed can be used:

```
.background{ background-color:#E3C1B8 }
```

This example shows the color as background, it is applied via the CSS property "background".

To optimize and compress your CSS code, you can use our [online CSS compressor and optimizer](#) based on csstidy. If you want to create a linear or radial gradient as background or border, check our [CSS Gradient Generator](#).

Hey! You found this booklet interesting? Support Converting Colors with the new Membership Option!

The pro membership hides all ads, plus gives you double the colors in the color bucket, and more awesome pro features!

[Learn more, Memberships starting at \\$2.50/m!](#)

**Follow me
on Twitter!**

@ConvertingColor