

Converting Colors

Hex(E3C1C5)

Have a look what the booklet for
Hex(E3C1C5) contains.

Hex(E3C1C5)	3
<i>Conversions</i>	4
<i>Details</i>	6
<i>Harmonies</i>	11
<i>Previews</i>	23
<i>Color Blindness Simulation</i>	26
<i>CSS Examples</i>	29

Color

Hex(E3C1C5)

Conversions

Conversions Part 1

Format	Color
Hex	E3C1C5
RGB	227, 193, 197
RGB Percent	89%, 76%, 77%
CMY	0.1098, 0.2431, 0.2275
CMYK	0.00, 0.15, 0.13, 0.11
HSL	353°, 38%, 82%
HSV	353°, 15%, 89%
XYZ	60.8266, 58.5020, 60.9094
YIQ	203.6220, 18.9800, 8.4520

Conversions

Conversions Part 2

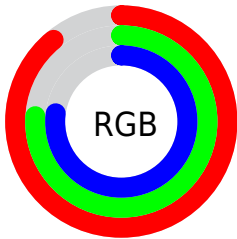
Format	Color
R _Y B	227, 193, 197
Decimal	14926277
CIE Lab	81.02, 12.70, 2.48
CIE LCh	81, 12.941, 11.040
Yxy	58.5020, 0.3375, 0.3246
Android (android.graphics.Color)	4293116357 (0xFFE3C1C5)
YUV	203.6220, -3.2646, 20.5025
Hunter-Lab	76.4866, 8.1019, 6.3256

Details

The Hex color **E3C1C5** is a light color, and the websafe version is hex **FFCCCC**. A complement of this color would be **C1E3DF**, and the grayscale version is **CCCCCC**.

A 20% lighter version of the original color is **FFFAFE**, and **AB8B8F** is the 20% darker color. If you saturate the color by 10%, you get **E3AAB1**, and if you desaturate by 10%, it is **E3D8D9**.

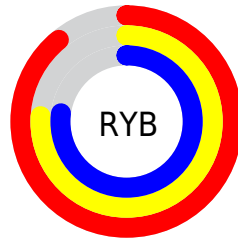
Distribution



Red (89%)

Green (76%)

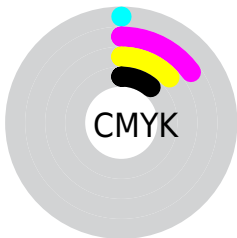
Blue (77%)



Red (89%)

Yellow (76%)

Blue (77%)

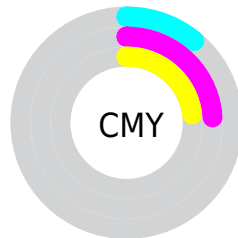


Cyan (0%)

Magenta (15%)

Yellow (13%)

Black (11%)



Cyan (11%)

Magenta (24%)

Yellow (23%)

Brightness & Saturation Gradients

These gradients show how the Hex color E3C1C5 changes by changing the brightness by 10 percent. The first figure shows a shift by +10% for each color and the second figure -10%.

Similar to the brightness gradients but the following saturation gradients show a change of the Hex color E3C1C5 by changing the saturation by 10% instead.

 E3C1C5


 E3C1C5

FFFFFF

 C7A6AA

 FFFAFE

 AB8B8F

 917276

 77595D

 5E4246

 452B2F

 2E171B

 1C0000

 000000

 E3C1C5

 E3C1C5

 E3AAB1

 E3D8D9

 E3949D

 E3EEED

 E37D89

 E3FFFF

 E36675

 E34F61

 E3394D

 E32239

 E30B25

 E3001B

Harmonies

Analogous

The Analogous color harmony consists of three colors that are next to each other on the color wheel.



DDC2D1



E3C1C5



E2C3BA

Triad

The Triadic color harmony groups three colors that are evenly spaced from another and form a triangle on the color wheel.



E3C1C5



C0CDB7



B4CDE0

Complementary

The Complementary color scheme is a pair of colors which are on the opposite of each other on the color wheel.



E3C1C5



C1E3DF

Split Complementary

Split-complementary colors differ from the complementary color scheme. The scheme consists of three colors, the original color and two neighbors of the complement color.



ACCFD9



E3C1C5



B4D0C1

Square

The Square scheme is like the rectangle color scheme, but the four colors are evenly spaced on the color wheel.



E3C1C5



CECAB1



ACD0CD



C2C9E1

Rectangle

The Rectangle color scheme consists of four colors that form a rectangle on the color wheel.



E3C1C5



DEC5B4



ACD0CD



B0CEDE

Sweetspot

The Sweet Spot groups the original color and five complimentary colors.



E3C1C5



FFF5F6



DEC1E3



80797A



000000



808080

Same Dimension

The Same Dimension uses a secret algorithm to generate beautiful new colors.



E3C1C5



FFD1D7



E3CDC1



736769



B30015



330006

Inverse Universe

The Inverse Universe completely reimagines the original color for something new.



E3C1C5



FFD1D6



C1D7E3



736769



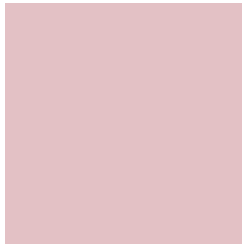
B30015



330006

Previews

White Background



This preview shows how the Hex color E3C1C5 looks on a white background.

Color Contrast Check

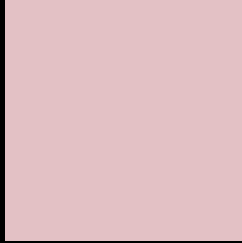
Large Text (above 18pt) WCAG AA × Fail

Any Text WCAG AA × Fail

Large Text (above 18pt) WCAG AAA × Fail

Any Text WCAG AAA × Fail

Black Background



This preview shows how the Hex color E3C1C5 looks on a black background.

Color Contrast Check

Large Text (above 18pt) WCAG AA ✓ Pass

Any Text WCAG AA ✓ Pass

Large Text (above 18pt) WCAG AAA ✓ Pass

Any Text WCAG AAA ✓ Pass

If you want to check with other color combinations, try the [Color Contrast Checker](#).

Hex E3C1C5 Background



This preview shows how black text looks on a background with the Hex color E3C1C5.



This preview shows how white text looks on a background with the Hex color E3C1C5.

Color Blindness Simulation

Color vision deficiency is a very complex topic, and I could not describe the different causes any better than Wikipedia does, so if you want to learn more, you should check out their [article about color blindness](#).

Dichromacy

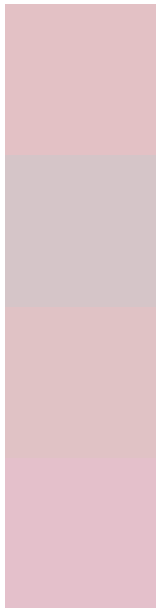


Original Color
E3C1C5

Protanopia
CDC8C9

Deuteranopia
DEC3C5

Trichromacy



Original Color
E3C1C5

Protanomaly
D5C5C8

Deuteranomaly
E0C2C5

Tritanomaly
E4C0CB

Monochromacy



Original Color
E3C1C5

Achromatopsia
CCCCCC

Achromatomaly
D4C8C9

CSS Examples

Text

The CSS property to change the color of the text to Hex E3C1C5 is called "color". The color property can be set on classes, ids or directly on the HTML element.

This example shows how text in the color #E3C1C5 looks like.

```
.text, #text, p{  
    color:#E3C1C5  
}
```

If you want to add a text shadow in that color use the text-shadow property, you can generate a text shadow directly with our [CSS Text Shadow Generator](#).

Here you see how black text with a 4 pixel #E3C1C5 colored shadow looks like.

```
.shadow{ text-shadow: 4px 4px 2px #E3C1C5
}
```

Border

The CSS property to change the border of an element to Hex E3C1C5 is called "border". The border property can be set on classes, ids or directly on the HTML element.

This example shows the color as border, it can be applied via the CSS property "border" or "border-color".

```
.border, #border, table{ border:4px solid
#E3C1C5 }
```

If only the border color should be changed use the property `border-color`.

```
.border{ border-color:#E3C1C5 }
```

If you want to add a box shadow in that color use:

Here you see how a box with a 4 pixel #E3C1C5 colored shadow looks like.

```
.boxshadow{ -moz-box-shadow:4px 4px 4px  
4px #E3C1C5; -webkit-box-shadow:4px 4px  
4px 4px #E3C1C5; box-shadow:4px 4px 4px  
4px #E3C1C5 }
```

Background

The CSS property to change the background color of an element to Hex E3C1C5 is called "background". The background property can be set on classes, ids or directly on the HTML element.

```
.background, #background, body{  
background:#E3C1C5 }
```

If only the background color should be changed can be used:

```
.background{ background-color:#E3C1C5 }
```

This example shows the color as background, it is applied via the CSS property "background".

To optimize and compress your CSS code, you can use our [online CSS compressor and optimizer](#) based on csstidy. If you want to create a linear or radial gradient as background or border, check our [CSS Gradient Generator](#).

Hey! You found this booklet interesting? Support Converting Colors with the new Membership Option!

The pro membership hides all ads, plus gives you double the colors in the color bucket, and more awesome pro features!

[Learn more, Memberships starting at \\$2.50/m!](#)

**Follow me
on Twitter!**

@ConvertingColor