

Converting Colors

Hex(E3C5BA)

Have a look what the booklet for
Hex(E3C5BA) contains.

Hex(E3C5BA)	3
<i>Conversions</i>	4
<i>Details</i>	6
<i>Harmonies</i>	11
<i>Previews</i>	23
<i>Color Blindness Simulation</i>	26
<i>CSS Examples</i>	29

Color

Hex(E3C5BA)

Conversions

Conversions Part 1

Format	Color
Hex	E3C5BA
RGB	227, 197, 186
RGB Percent	89%, 77%, 73%
CMY	0.1098, 0.2275, 0.2706
CMYK	0.00, 0.13, 0.18, 0.11
HSL	16°, 42%, 81%
HSV	16°, 18%, 89%
XYZ	60.5077, 59.8086, 54.8095
YIQ	204.7160, 21.4110, 2.9390

Conversions

Conversions Part 2

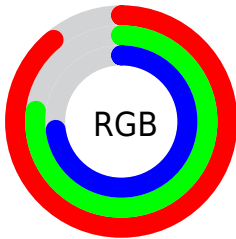
Format	Color
RYB	227, 201, 186
Decimal	14927290
CIELab	81.73, 8.86, 9.41
CIELCh	82, 12.923, 46.734
Yxy	59.8086, 0.3455, 0.3415
Android (android.graphics.Color)	4293117370 (0xFFE3C5BA)
YUV	204.7160, -9.2270, 19.5431
Hunter-Lab	77.3360, 4.3205, 12.1153

Details

The Hex color **E3C5BA** is a light color, and the websafe version is hex **FFCCCC**. A complement of this color would be **BAD8E3**, and the grayscale version is **CDCDCD**.

A 20% lighter version of the original color is **FFFEF2**, and **AB8F85** is the 20% darker color. If you saturate the color by 10%, you get **E3B4A3**, and if you desaturate by 10%, it is **E3D6D1**.

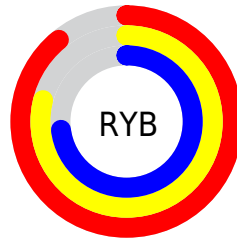
Distribution



Red (89%)

Green (77%)

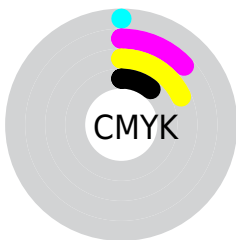
Blue (73%)



Red (89%)

Yellow (79%)

Blue (73%)

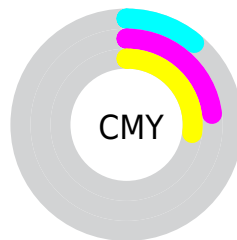


Cyan (0%)

Magenta (13%)

Yellow (18%)

Black (11%)



Cyan (11%)

Magenta (23%)

Yellow (27%)

Brightness & Saturation Gradients

These gradients show how the Hex color E3C5BA changes by changing the brightness by 10 percent. The first figure shows a shift by +10% for each color and the second figure -10%.

Similar to the brightness gradients but the following saturation gradients show a change of the Hex color E3C5BA by changing the saturation by 10% instead.

 E3C5BA

FFFFFF

 FFFEF2

 E3C5BA

 C7AA9F

 AB8F85

 90766C

 765D53

 5D453C

 452F27

 2E1A12

 190000

 000000

 E3C5BA

 E3C5BA

 E3B4A3

 E3D6D1

 E3A48D

 E3E6E7

 E39376

 E3F7FE

 E3835F

 E3FFFF

 E37249

 E36132

 E3511B

 E34004

 E33D00

Harmonies

Analogous

The Analogous color harmony consists of three colors that are next to each other on the color wheel.



E5C3C5



E3C5BA



DAC8B4

Triad

The Triadic color harmony groups three colors that are evenly spaced from another and form a triangle on the color wheel.



E3C5BA



B4D2C5



C7CAE2

Complementary

The Complementary color scheme is a pair of colors which are on the opposite of each other on the color wheel.



E3C5BA



BAD8E3

Split Complementary

Split-complementary colors differ from the complementary color scheme. The scheme consists of three colors, the original color and two neighbors of the complement color.



B8CEE2



E3C5BA



ADD2D2

Square

The Square scheme is like the rectangle color scheme, but the four colors are evenly spaced on the color wheel.



E3C5BA



C0D0BA



AFD1DC



D6C6DC

Rectangle

The Rectangle color scheme consists of four colors that form a rectangle on the color wheel.



E3C5BA



D2CBB3



AFD1DC



C2CBE3

Sweetspot

The Sweet Spot groups the original color and five complimentary colors.



E3C5BA



FFF6F2



E3BAD8



807A78



000000



808080

Same Dimension

The Same Dimension uses a secret algorithm to generate beautiful new colors.



E3C5BA



FFD6C7



E3D9BA



736A67



B33000



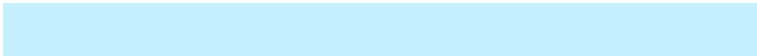
330E00

Inverse Universe

The Inverse Universe completely reimagines the original color for something new.



BAD8E3



C7F0FF



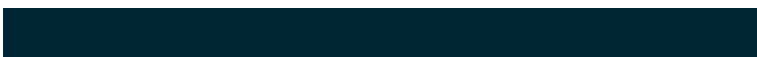
BAC4E3



677073



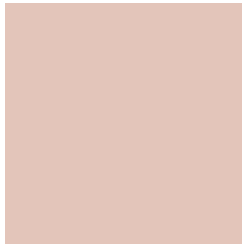
0083B3



002533

Previews

White Background



This preview shows how the Hex color E3C5BA looks on a white background.

Color Contrast Check

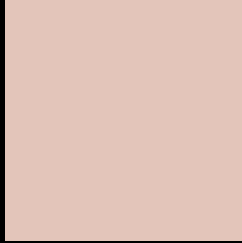
Large Text (above 18pt) WCAG AA × Fail

Any Text WCAG AA × Fail

Large Text (above 18pt) WCAG AAA × Fail

Any Text WCAG AAA × Fail

Black Background



This preview shows how the Hex color E3C5BA looks on a black background.

Color Contrast Check

Large Text (above 18pt) WCAG AA ✓ Pass

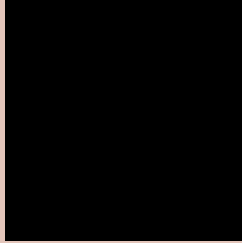
Any Text WCAG AA ✓ Pass

Large Text (above 18pt) WCAG AAA ✓ Pass

Any Text WCAG AAA ✓ Pass

If you want to check with other color combinations, try the [Color Contrast Checker](#).

Hex E3C5BA Background



This preview shows how black text looks on a background with the Hex color E3C5BA.

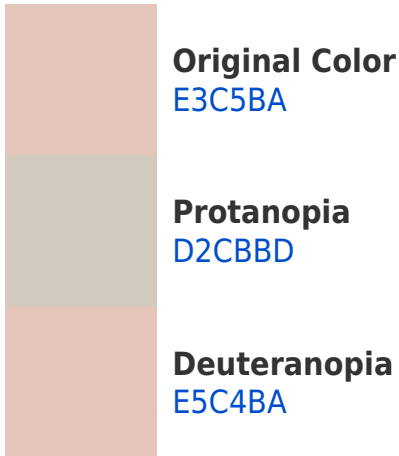


This preview shows how white text looks on a background with the Hex color E3C5BA.

Color Blindness Simulation

Color vision deficiency is a very complex topic, and I could not describe the different causes any better than Wikipedia does, so if you want to learn more, you should check out their [article about color blindness](#).

Dichromacy





Tritanopia
E6C2D1

Trichromacy



Original Color
E3C5BA

Protanomaly
D8C9BC

Deuteranomaly
E4C4BA

Tritanomaly
E5C3C9

Monochromacy



Original Color
E3C5BA

Achromatopsia
CDCDCD

Achromatomaly
D5CAC6

CSS Examples

Text

The CSS property to change the color of the text to Hex E3C5BA is called "color". The color property can be set on classes, ids or directly on the HTML element.

This example shows how text in the color #E3C5BA looks like.

```
.text, #text, p{  
    color:#E3C5BA  
}
```

If you want to add a text shadow in that color use the text-shadow property, you can generate a text shadow directly with our [CSS Text Shadow Generator](#).

Here you see how black text with a 4 pixel #E3C5BA colored shadow looks like.

```
.shadow{ text-shadow: 4px 4px 2px #E3C5BA
}
```

Border

The CSS property to change the border of an element to Hex E3C5BA is called "border". The border property can be set on classes, ids or directly on the HTML element.

This example shows the color as border, it can be applied via the CSS property "border" or "border-color".

```
.border, #border, table{ border:4px solid
#E3C5BA }
```

If only the border color should be changed use the property `border-color`.

```
.border{ border-color:#E3C5BA }
```

If you want to add a box shadow in that color use:

Here you see how a box with a 4 pixel #E3C5BA colored shadow looks like.

```
.boxshadow{ -moz-box-shadow:4px 4px 4px  
4px #E3C5BA; -webkit-box-shadow:4px 4px  
4px 4px #E3C5BA; box-shadow:4px 4px 4px  
4px #E3C5BA }
```

Background

The CSS property to change the background color of an element to Hex E3C5BA is called "background". The background property can be set on classes, ids or directly on the HTML element.

```
.background, #background, body{  
background:#E3C5BA }
```

If only the background color should be changed can be used:

```
.background{ background-color:#E3C5BA }
```

This example shows the color as background, it is applied via the CSS property "background".

To optimize and compress your CSS code, you can use our [online CSS compressor and optimizer](#) based on csstidy. If you want to create a linear or radial gradient as background or border, check our [CSS Gradient Generator](#).

Hey! You found this booklet interesting? Support Converting Colors with the new Membership Option!

The pro membership hides all ads, plus gives you double the colors in the color bucket, and more awesome pro features!

[Learn more, Memberships starting at \\$2.50/m!](#)

**Follow me
on Twitter!**

@ConvertingColor