

Converting Colors

Hex(E3C6B1)

Have a look what the booklet for
Hex(E3C6B1) contains.

Hex(E3C6B1)	3
<i>Conversions</i>	4
<i>Details</i>	6
<i>Harmonies</i>	11
<i>Previews</i>	23
<i>Color Blindness Simulation</i>	26
<i>CSS Examples</i>	29

Color

Hex(E3C6B1)

Conversions

Conversions Part 1

Format	Color
Hex	E3C6B1
RGB	227, 198, 177
RGB Percent	89%, 78%, 69%
CMY	0.1098, 0.2235, 0.3059
CMYK	0.00, 0.13, 0.22, 0.11
HSL	25°, 47%, 79%
HSV	25°, 22%, 89%
XYZ	59.8084, 59.8934, 50.0033
YIQ	204.2770, 24.0250, -0.3830

Conversions

Conversions Part 2

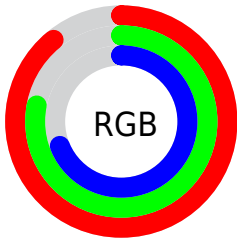
Format	Color
R_{YB}	227, 213, 177
Decimal	14927537
CIE _{Lab}	81.78, 6.99, 14.28
CIE _{LCh}	82, 15.904, 63.908
Yxy	59.8934, 0.3524, 0.3529
Android (android.graphics.Color)	4293117617 (0xFFE3C6B1)
YUV	204.2770, -13.4476, 19.9281
Hunter-Lab	77.3908, 2.5128, 15.8655

Details

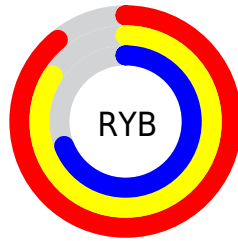
The Hex color **E3C6B1** is a light color, and the websafe version is hex **FFCCCC**. A complement of this color would be **B1CEE3**, and the grayscale version is **CCCCCC**.

A 20% lighter version of the original color is **FFFFE9**, and **AB907C** is the 20% darker color. If you saturate the color by 10%, you get **E3B99A**, and if you desaturate by 10%, it is **E3D3C8**.

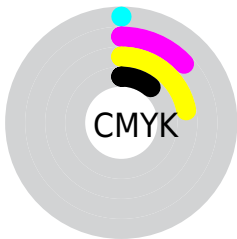
Distribution



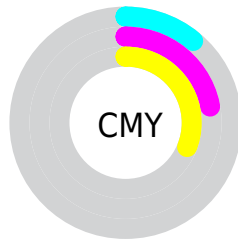
- Red (89%)
- Green (78%)
- Blue (69%)



- Red (89%)
- Yellow (84%)
- Blue (69%)



- Cyan (0%)
- Magenta (13%)
- Yellow (22%)
- Black (11%)



- Cyan (11%)
- Magenta (22%)
- Yellow (31%)

Brightness & Saturation Gradients

These gradients show how the Hex color E3C6B1 changes by changing the brightness by 10 percent. The first figure shows a shift by +10% for each color and the second figure -10%.

Similar to the brightness gradients but the following saturation gradients show a change of the Hex color E3C6B1 by changing the saturation by 10% instead.

 E3C6B1

FFFFFF


 FFFFE9

 E3C6B1

 C7AB96

 AB907C

 907763

 765E4B

 5D4635

 45301F

 2E1B08

 170100

 000000

 E3C6B1

 E3C6B1

 E3B99A

 E3D3C8

 E3AC84

 E3E0DE

 E39F6D

 E3EDF5

 E39156

 E3FBFF

 E38440

 E3FFFF

 E37729

 E36A12

 E35F00

Harmonies

Analogous

The Analogous color harmony consists of three colors that are next to each other on the color wheel.



EAC2BB



E3C6B1



D5CBAE

Triad

The Triadic color harmony groups three colors that are evenly spaced from another and form a triangle on the color wheel.



E3C6B1



A8D4CD



D1C7E4

Complementary

The Complementary color scheme is a pair of colors which are on the opposite of each other on the color wheel.



E3C6B1



B1CEE3

Split Complementary

Split-complementary colors differ from the complementary color scheme. The scheme consists of three colors, the original color and two neighbors of the complement color.



BECCE9



E3C6B1



A5D3DB

Square

The Square scheme is like the rectangle color scheme, but the four colors are evenly spaced on the color wheel.



E3C6B1



B4D3BE



ADD0E6



E1C3D9

Rectangle

The Rectangle color scheme consists of four colors that form a rectangle on the color wheel.



E3C6B1



CACEB0



ADD0E6



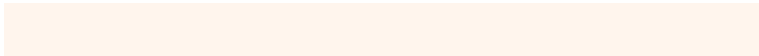
CAC9E6

Sweetspot

The Sweet Spot groups the original color and five complimentary colors.



E3C6B1



FFF5ED



E3B1CE



807A75



000000



808080

Same Dimension

The Same Dimension uses a secret algorithm to generate beautiful new colors.



E3C6B1



FFD9BD



E3DFB1



736C67



B34B00



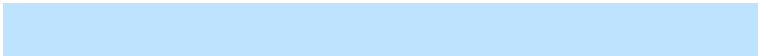
331500

Inverse Universe

The Inverse Universe completely reimagines the original color for something new.



B1CEE3



BDE3FF



B1B5E3



676E73



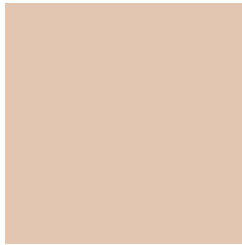
0068B3



001E33

Previews

White Background



This preview shows how the Hex color E3C6B1 looks on a white background.

Color Contrast Check

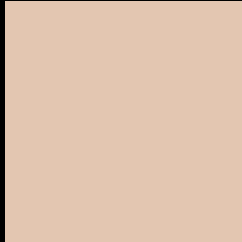
Large Text (above 18pt) WCAG AA × Fail

Any Text WCAG AA × Fail

Large Text (above 18pt) WCAG AAA × Fail

Any Text WCAG AAA × Fail

Black Background



This preview shows how the Hex color E3C6B1 looks on a black background.

Color Contrast Check

Large Text (above 18pt) WCAG AA ✓ Pass

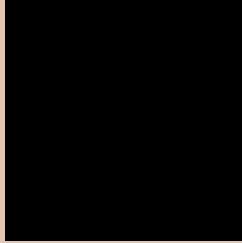
Any Text WCAG AA ✓ Pass

Large Text (above 18pt) WCAG AAA ✓ Pass

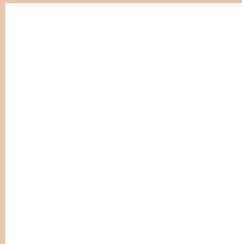
Any Text WCAG AAA ✓ Pass

If you want to check with other color combinations, try the [Color Contrast Checker](#).

Hex E3C6B1 Background



This preview shows how black text looks on a background with the Hex color E3C6B1.

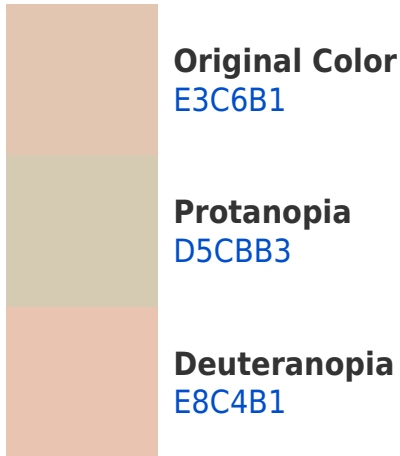


This preview shows how white text looks on a background with the Hex color E3C6B1.

Color Blindness Simulation

Color vision deficiency is a very complex topic, and I could not describe the different causes any better than Wikipedia does, so if you want to learn more, you should check out their [article about color blindness](#).

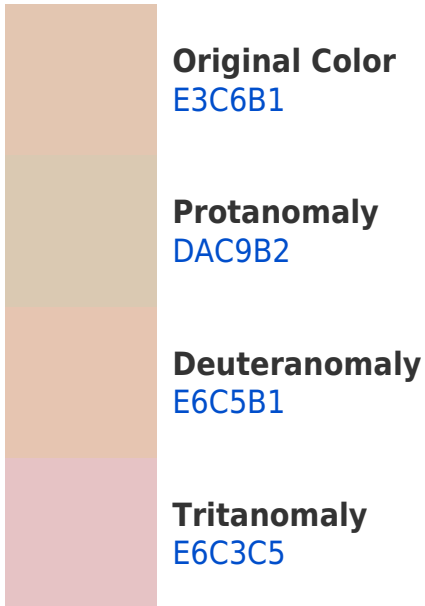
Dichromacy



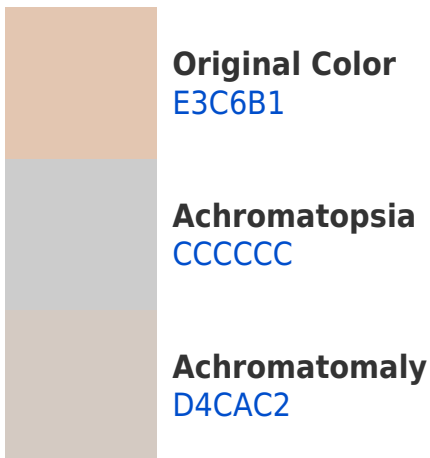


Tritanopia
E7C1D0

Trichromacy



Monochromacy



CSS Examples

Text

The CSS property to change the color of the text to Hex E3C6B1 is called "color". The color property can be set on classes, ids or directly on the HTML element.

This example shows how text in the color #E3C6B1 looks like.

```
.text, #text, p{  
    color:#E3C6B1  
}
```

If you want to add a text shadow in that color use the text-shadow property, you can generate a text shadow directly with our [CSS Text Shadow Generator](#).

Here you see how black text with a 4 pixel #E3C6B1 colored shadow looks like.

```
.shadow{ text-shadow: 4px 4px 2px #E3C6B1
}
```

Border

The CSS property to change the border of an element to Hex E3C6B1 is called "border". The border property can be set on classes, ids or directly on the HTML element.

This example shows the color as border, it can be applied via the CSS property "border" or "border-color".

```
.border, #border, table{ border:4px solid
#E3C6B1 }
```

If only the border color should be changed use the property `border-color`.

```
.border{ border-color:#E3C6B1 }
```

If you want to add a box shadow in that color use:

Here you see how a box with a 4 pixel #E3C6B1 colored shadow looks like.

```
.boxshadow{ -moz-box-shadow:4px 4px 4px  
4px #E3C6B1; -webkit-box-shadow:4px 4px  
4px 4px #E3C6B1; box-shadow:4px 4px 4px  
4px #E3C6B1 }
```

Background

The CSS property to change the background color of an element to Hex E3C6B1 is called "background". The background property can be set on classes, ids or directly on the HTML element.

```
.background, #background, body{  
background:#E3C6B1 }
```

If only the background color should be changed can be used:

```
.background{ background-color:#E3C6B1 }
```

This example shows the color as background, it is applied via the CSS property "background".

To optimize and compress your CSS code, you can use our [online CSS compressor and optimizer](#) based on csstidy. If you want to create a linear or radial gradient as background or border, check our [CSS Gradient Generator](#).

Hey! You found this booklet interesting? Support Converting Colors with the new Membership Option!

The pro membership hides all ads, plus gives you double the colors in the color bucket, and more awesome pro features!

[Learn more, Memberships starting at \\$2.50/m!](#)

**Follow me
on Twitter!**

@ConvertingColor