

Converting Colors

Hex(E3C6B8)

Have a look what the booklet for
Hex(E3C6B8) contains.

Hex(E3C6B8)	3
<i>Conversions</i>	4
<i>Details</i>	6
<i>Harmonies</i>	11
<i>Previews</i>	23
<i>Color Blindness Simulation</i>	26
<i>CSS Examples</i>	29

Color

Hex(E3C6B8)

Conversions

Conversions Part 1

Format	Color
Hex	E3C6B8
RGB	227, 198, 184
RGB Percent	89%, 78%, 72%
CMY	0.1098, 0.2235, 0.2784
CMYK	0.00, 0.13, 0.19, 0.11
HSL	20°, 43%, 81%
HSV	20°, 19%, 89%
XYZ	60.5244, 60.1798, 53.7733
YIQ	205.0750, 21.7780, 1.7940

Conversions

Conversions Part 2

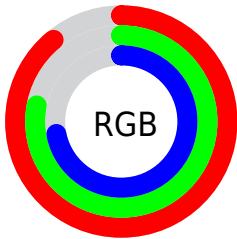
Format	Color
R _Y B	227, 205, 184
Decimal	14927544
CIE Lab	81.94, 8.03, 10.77
CIE LCh	82, 13.430, 53.295
Yxy	60.1798, 0.3469, 0.3449
Android (android.graphics.Color)	4293117624 (0xFFE3C6B8)
YUV	205.0750, -10.3900, 19.2282
Hunter-Lab	77.5756, 3.5081, 13.2047

Details

The Hex color **E3C6B8** is a light color, and the websafe version is hex **FFCCCC**. A complement of this color would be **B8D5E3**, and the grayscale version is **CDCDCD**.

A 20% lighter version of the original color is **FFFFFF0**, and **AB9083** is the 20% darker color. If you saturate the color by 10%, you get **E3B7A1**, and if you desaturate by 10%, it is **E3D5CF**.

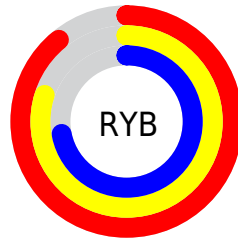
Distribution



Red (89%)

Green (78%)

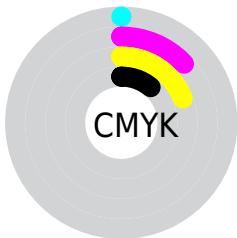
Blue (72%)



Red (89%)

Yellow (80%)

Blue (72%)

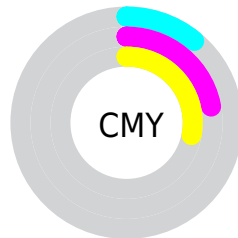


Cyan (0%)

Magenta (13%)

Yellow (19%)

Black (11%)



Cyan (11%)

Magenta (22%)

Yellow (28%)

Brightness & Saturation Gradients

These gradients show how the Hex color E3C6B8 changes by changing the brightness by 10 percent. The first figure shows a shift by +10% for each color and the second figure -10%.

Similar to the brightness gradients but the following saturation gradients show a change of the Hex color E3C6B8 by changing the saturation by 10% instead.

 E3C6B8

 E3C6B8

FFFFFFF

 C7AB9D

 FFFFFF0

 AB9083

 90776A

 765E52

 5D463B

 453025

 2E1B10

 190000

 000000

 E3C6B8

 E3C6B8

 E3B7A1

 E3D5CF

 E3A78B

 E3E5E5

 E39874

 E3F4FC

 E3895D

 E3FFFF

 E37946

 E36A30

 E35B19

 E34C02

 E34A00

Harmonies

Analogous

The Analogous color harmony consists of three colors that are next to each other on the color wheel.



E7C4C2



E3C6B8



D9CAB3

Triad

The Triadic color harmony groups three colors that are evenly spaced from another and form a triangle on the color wheel.



E3C6B8



B1D3C8



CBC9E3

Complementary

The Complementary color scheme is a pair of colors which are on the opposite of each other on the color wheel.



E3C6B8



B8D5E3

Split Complementary

Split-complementary colors differ from the complementary color scheme. The scheme consists of three colors, the original color and two neighbors of the complement color.



BBCEE4



E3C6B8



ACD3D5

Square

The Square scheme is like the rectangle color scheme, but the four colors are evenly spaced on the color wheel.



E3C6B8



BDD1BC



B0D1DF



DAC6DB

Rectangle

The Rectangle color scheme consists of four colors that form a rectangle on the color wheel.



E3C6B8



D0CDB3



B0D1DF



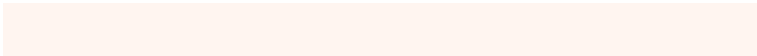
C5CBE4

Sweetspot

The Sweet Spot groups the original color and five complimentary colors.



E3C6B8



FFF5F0



E3B8D5



807977



000000



808080

Same Dimension

The Same Dimension uses a secret algorithm to generate beautiful new colors.



E3C6B8



FFD7C4



E3DBB8



736B67



B33A00



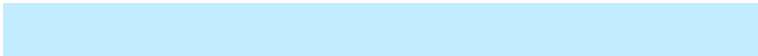
331100

Inverse Universe

The Inverse Universe completely reimagines the original color for something new.



B8D5E3



C4ECFF



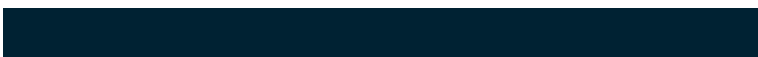
B8C0E3



676F73



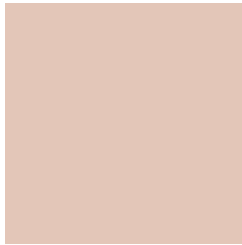
0078B3



002233

Previews

White Background



This preview shows how the Hex color E3C6B8 looks on a white background.

Color Contrast Check

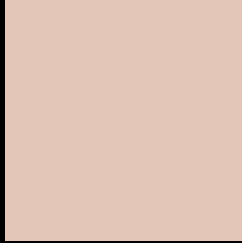
Large Text (above 18pt) WCAG AA × Fail

Any Text WCAG AA × Fail

Large Text (above 18pt) WCAG AAA × Fail

Any Text WCAG AAA × Fail

Black Background



This preview shows how the Hex color E3C6B8 looks on a black background.

Color Contrast Check

Large Text (above 18pt) WCAG AA ✓ Pass

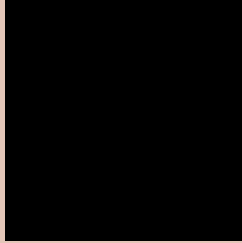
Any Text WCAG AA ✓ Pass

Large Text (above 18pt) WCAG AAA ✓ Pass

Any Text WCAG AAA ✓ Pass

If you want to check with other color combinations, try the [Color Contrast Checker](#).

Hex E3C6B8 Background



This preview shows how black text looks on a background with the Hex color E3C6B8.

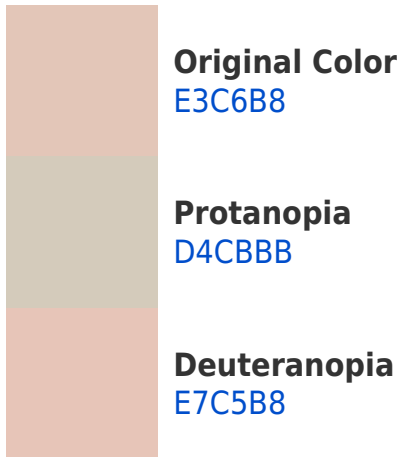


This preview shows how white text looks on a background with the Hex color E3C6B8.

Color Blindness Simulation

Color vision deficiency is a very complex topic, and I could not describe the different causes any better than Wikipedia does, so if you want to learn more, you should check out their [article about color blindness](#).

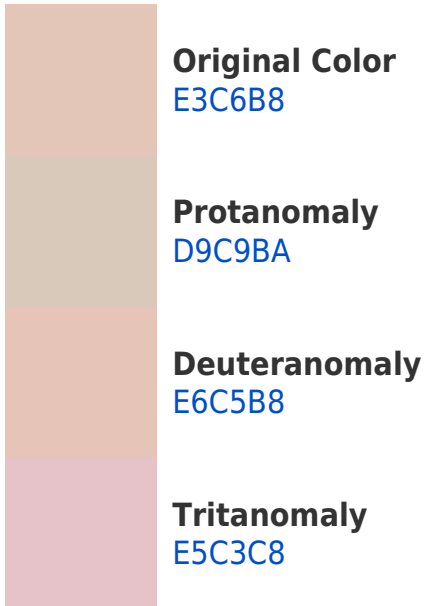
Dichromacy



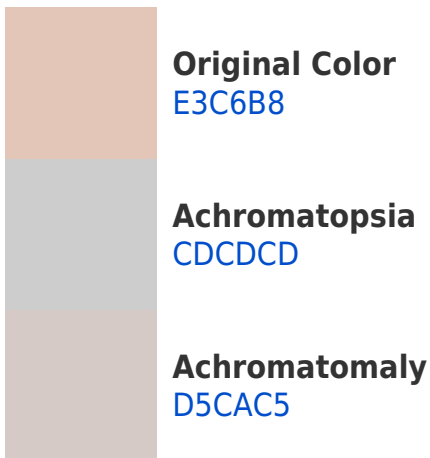


Tritanopia
E6C2D1

Trichromacy



Monochromacy



CSS Examples

Text

The CSS property to change the color of the text to Hex E3C6B8 is called "color". The color property can be set on classes, ids or directly on the HTML element.

This example shows how text in the color #E3C6B8 looks like.

```
.text, #text, p{  
    color:#E3C6B8  
}
```

If you want to add a text shadow in that color use the text-shadow property, you can generate a text shadow directly with our [CSS Text Shadow Generator](#).

Here you see how black text with a 4 pixel #E3C6B8 colored shadow looks like.

```
.shadow{ text-shadow: 4px 4px 2px #E3C6B8
}
```

Border

The CSS property to change the border of an element to Hex E3C6B8 is called "border". The border property can be set on classes, ids or directly on the HTML element.

This example shows the color as border, it can be applied via the CSS property "border" or "border-color".

```
.border, #border, table{ border:4px solid
#E3C6B8 }
```

If only the border color should be changed use the property `border-color`.

```
.border{ border-color:#E3C6B8 }
```

If you want to add a box shadow in that color use:

Here you see how a box with a 4 pixel #E3C6B8 colored shadow looks like.

```
.boxshadow{ -moz-box-shadow:4px 4px 4px  
4px #E3C6B8; -webkit-box-shadow:4px 4px  
4px 4px #E3C6B8; box-shadow:4px 4px 4px  
4px #E3C6B8 }
```

Background

The CSS property to change the background color of an element to Hex E3C6B8 is called "background". The background property can be set on classes, ids or directly on the HTML element.

```
.background, #background, body{  
background:#E3C6B8 }
```

If only the background color should be changed can be used:

```
.background{ background-color:#E3C6B8 }
```

This example shows the color as background, it is applied via the CSS property "background".

To optimize and compress your CSS code, you can use our [online CSS compressor and optimizer](#) based on csstidy. If you want to create a linear or radial gradient as background or border, check our [CSS Gradient Generator](#).

Hey! You found this booklet interesting? Support Converting Colors with the new Membership Option!

The pro membership hides all ads, plus gives you double the colors in the color bucket, and more awesome pro features!

[Learn more, Memberships starting at \\$2.50/m!](#)

**Follow me
on Twitter!**

@ConvertingColor