

Converting Colors

Hex(E3C6C5)

Have a look what the booklet for
Hex(E3C6C5) contains.

Hex(E3C6C5)	3
<i>Conversions</i>	4
<i>Details</i>	6
<i>Harmonies</i>	11
<i>Previews</i>	23
<i>Color Blindness Simulation</i>	26
<i>CSS Examples</i>	29

Color

Hex(E3C6C5)

Conversions

Conversions Part 1

Format	Color
Hex	E3C6C5
RGB	227, 198, 197
RGB Percent	89%, 78%, 77%
CMY	0.1098, 0.2235, 0.2275
CMYK	0.00, 0.13, 0.13, 0.11
HSL	2°, 35%, 83%
HSV	2°, 13%, 89%
XYZ	61.9507, 60.7503, 61.2841
YIQ	206.5570, 17.6050, 5.8370

Conversions

Conversions Part 2

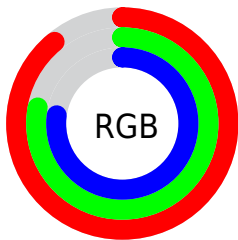
Format	Color
R _Y B	227, 198, 197
Decimal	14927557
CIE Lab	82.24, 10.05, 4.26
CIE LCh	82, 10.914, 22.956
Yxy	60.7503, 0.3367, 0.3302
Android (android.graphics.Color)	4293117637 (0xFFE3C6C5)
YUV	206.5570, -4.7116, 17.9285
Hunter-Lab	77.9425, 5.4771, 7.9415

Details

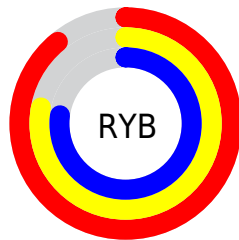
The Hex color **E3C6C5** is a light color, and the websafe version is hex **FFCCCC**. A complement of this color would be **C5E2E3**, and the grayscale version is **CFCFCF**.

A 20% lighter version of the original color is **FFFFFFE**, and **AB908F** is the 20% darker color. If you saturate the color by 10%, you get **E3B0AE**, and if you desaturate by 10%, it is **E3DCDC**.

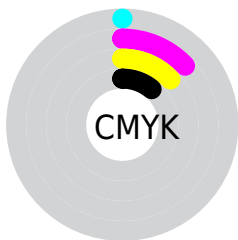
Distribution



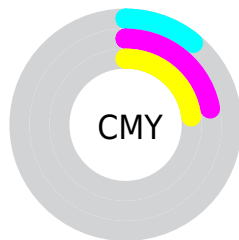
- Red (89%)
- Green (78%)
- Blue (77%)



- Red (89%)
- Yellow (78%)
- Blue (77%)



- Cyan (0%)
- Magenta (13%)
- Yellow (13%)
- Black (11%)



- Cyan (11%)
- Magenta (22%)
- Yellow (23%)

Brightness & Saturation Gradients

These gradients show how the Hex color E3C6C5 changes by changing the brightness by 10 percent. The first figure shows a shift by +10% for each color and the second figure -10%.

Similar to the brightness gradients but the following saturation gradients show a change of the Hex color E3C6C5 by changing the saturation by 10% instead.

 E3C6C5

 E3C6C5

FFFFFFF

 C7ABAA

FFFFFFE

 AB908F

 917676

 775E5D

 5E4646

 46302F

 2F1B1B

 1C0000

 000000

 E3C6C5

 E3C6C5

 E3B0AE

 E3DCDC

 E39A98

 E3F2F2

 E38481

 E3FFFF

 E36E6A

 E35854

 E3423D

 E32C26

 E3160F

 E30800

Harmonies

Analogous

The Analogous color harmony consists of three colors that are next to each other on the color wheel.



E0C6CF



E3C6C5



E0C8BD

Triad

The Triadic color harmony groups three colors that are evenly spaced from another and form a triangle on the color wheel.



E3C6C5



C1D1C0



BFCEE1

Complementary

The Complementary color scheme is a pair of colors which are on the opposite of each other on the color wheel.



E3C6C5



C5E2E3

Split Complementary

Split-complementary colors differ from the complementary color scheme. The scheme consists of three colors, the original color and two neighbors of the complement color.



B6D1DD



E3C6C5



B7D3CA

Square

The Square scheme is like the rectangle color scheme, but the four colors are evenly spaced on the color wheel.



E3C6C5



CCCEBA



B3D3D4



CCCBDF

Rectangle

The Rectangle color scheme consists of four colors that form a rectangle on the color wheel.



E3C6C5



DBCAB9



B3D3D4



BCCFE0

Sweetspot

The Sweet Spot groups the original color and five complimentary colors.



E3C6C5



FFF5F5



E3C5E2



807979



000000



808080

Same Dimension

The Same Dimension uses a secret algorithm to generate beautiful new colors.



E3C6C5



FFD8D6



E3D5C5



736867



B30600



330200

Inverse Universe

The Inverse Universe completely reimagines the original color for something new.



C5E2E3



D6FEFF



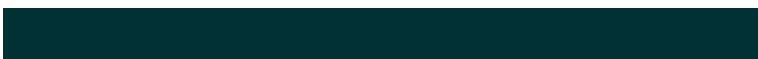
C5D3E3



677273



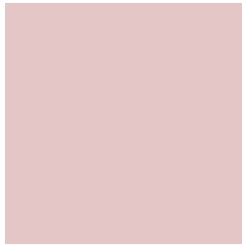
00ADB3



003133

Previews

White Background



This preview shows how the Hex color E3C6C5 looks on a white background.

Color Contrast Check

Large Text (above 18pt) WCAG AA × Fail

Any Text WCAG AA × Fail

Large Text (above 18pt) WCAG AAA × Fail

Any Text WCAG AAA × Fail

Black Background



This preview shows how the Hex color E3C6C5 looks on a black background.

Color Contrast Check

Large Text (above 18pt) WCAG AA ✓ Pass

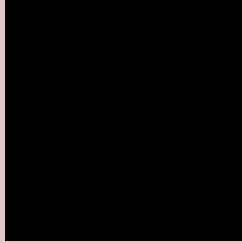
Any Text WCAG AA ✓ Pass

Large Text (above 18pt) WCAG AAA ✓ Pass

Any Text WCAG AAA ✓ Pass

If you want to check with other color combinations, try the [Color Contrast Checker](#).

Hex E3C6C5 Background



This preview shows how black text looks on a background with the Hex color E3C6C5.

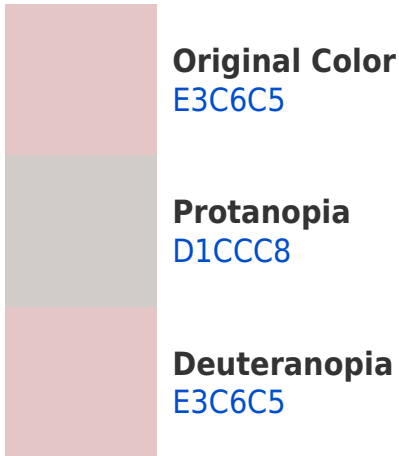


This preview shows how white text looks on a background with the Hex color E3C6C5.

Color Blindness Simulation

Color vision deficiency is a very complex topic, and I could not describe the different causes any better than Wikipedia does, so if you want to learn more, you should check out their [article about color blindness](#).

Dichromacy





Tritanopia
E5C4D3

Trichromacy



Original Color
E3C6C5

Protanomaly
D8CAC7

Deuteranomaly
E3C6C5

Tritanomaly
E4C5CE

Monochromacy



Original Color
E3C6C5

Achromatopsia
CFCFCF

Achromatomaly
D6CCCB

CSS Examples

Text

The CSS property to change the color of the text to Hex E3C6C5 is called "color". The color property can be set on classes, ids or directly on the HTML element.

This example shows how text in the color #E3C6C5 looks like.

```
.text, #text, p{  
    color:#E3C6C5  
}
```

If you want to add a text shadow in that color use the text-shadow property, you can generate a text shadow directly with our [CSS Text Shadow Generator](#).

Here you see how black text with a 4 pixel #E3C6C5 colored shadow looks like.

```
.shadow{ text-shadow: 4px 4px 2px #E3C6C5
}
```

Border

The CSS property to change the border of an element to Hex E3C6C5 is called "border". The border property can be set on classes, ids or directly on the HTML element.

This example shows the color as border, it can be applied via the CSS property "border" or "border-color".

```
.border, #border, table{ border:4px solid
#E3C6C5 }
```

If only the border color should be changed use the property `border-color`.

```
.border{ border-color:#E3C6C5 }
```

If you want to add a box shadow in that color use:

Here you see how a box with a 4 pixel #E3C6C5 colored shadow looks like.

```
.boxshadow{ -moz-box-shadow:4px 4px 4px  
4px #E3C6C5; -webkit-box-shadow:4px 4px  
4px 4px #E3C6C5; box-shadow:4px 4px 4px  
4px #E3C6C5 }
```

Background

The CSS property to change the background color of an element to Hex E3C6C5 is called "background". The background property can be set on classes, ids or directly on the HTML element.

```
.background, #background, body{  
background:#E3C6C5 }
```

If only the background color should be changed can be used:

```
.background{ background-color:#E3C6C5 }
```

This example shows the color as background, it is applied via the CSS property "background".

To optimize and compress your CSS code, you can use our [online CSS compressor and optimizer](#) based on csstidy. If you want to create a linear or radial gradient as background or border, check our [CSS Gradient Generator](#).

Hey! You found this booklet interesting? Support Converting Colors with the new Membership Option!

The pro membership hides all ads, plus gives you double the colors in the color bucket, and more awesome pro features!

[Learn more, Memberships starting at \\$2.50/m!](#)

**Follow me
on Twitter!**

@ConvertingColor