

Converting Colors

Hex(E3C6C7)

Have a look what the booklet for
Hex(E3C6C7) contains.

Hex(E3C6C7)	3
<i>Conversions</i>	4
<i>Details</i>	6
<i>Harmonies</i>	11
<i>Previews</i>	23
<i>Color Blindness Simulation</i>	26
<i>CSS Examples</i>	29

Color

Hex(E3C6C7)

Conversions

Conversions Part 1

Format	Color
Hex	E3C6C7
RGB	227, 198, 199
RGB Percent	89%, 78%, 78%
CMY	0.1098, 0.2235, 0.2196
CMYK	0.00, 0.13, 0.12, 0.11
HSL	358°, 34%, 83%
HSV	358°, 13%, 89%
XYZ	62.1814, 60.8426, 62.4993
YIQ	206.7850, 16.9630, 6.4590

Conversions

Conversions Part 2

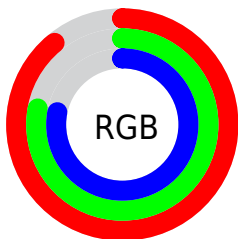
Format	Color
R _Y B	227, 198, 199
Decimal	14927559
CIE Lab	82.29, 10.37, 3.26
CIE LCh	82, 10.873, 17.437
Yxy	60.8426, 0.3352, 0.3280
Android (android.graphics.Color)	4293117639 (0xFFE3C6C7)
YUV	206.7850, -3.8380, 17.7286
Hunter-Lab	78.0017, 5.7939, 7.0947

Details

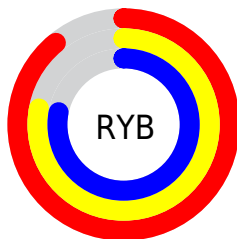
The Hex color **E3C6C7** is a light color, and the websafe version is hex **FFCCCC**. A complement of this color would be **C6E3E2**, and the grayscale version is **CFCFCF**.

A 20% lighter version of the original color is **FFFFFF**, and **AB9091** is the 20% darker color. If you saturate the color by 10%, you get **E3AFB1**, and if you desaturate by 10%, it is **E3DDDD**.

Distribution



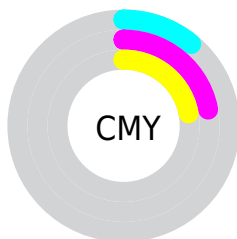
- Red (89%)
- Green (78%)
- Blue (78%)



- Red (89%)
- Yellow (78%)
- Blue (78%)



- Cyan (0%)
- Magenta (13%)
- Yellow (12%)
- Black (11%)



- Cyan (11%)
- Magenta (22%)
- Yellow (22%)

Brightness & Saturation Gradients

These gradients show how the Hex color E3C6C7 changes by changing the brightness by 10 percent. The first figure shows a shift by +10% for each color and the second figure -10%.

Similar to the brightness gradients but the following saturation gradients show a change of the Hex color E3C6C7 by changing the saturation by 10% instead.


 E3C6C7

FFFFFF

 E3C6C7

 C7ABAC

 AB9091

 917678

 775E5F

 5E4647

 463031

 2F1B1C

 1C0001

 000000

 E3C6C7

 E3C6C7

 E3AFB1

 E3DDDD

 E3999B

 E3F3F3

 E38285

 E3FFFF

 E36B6F

 E35559

 E33E43

 E3272E

 E31018

 E30008

Harmonies

Analogous

The Analogous color harmony consists of three colors that are next to each other on the color wheel.



DFC6D1



E3C6C7



E1C8BE

Triad

The Triadic color harmony groups three colors that are evenly spaced from another and form a triangle on the color wheel.



E3C6C7



C3D1BF



BDCFEO

Complementary

The Complementary color scheme is a pair of colors which are on the opposite of each other on the color wheel.



E3C6C7



C6E3E2

Split Complementary

Split-complementary colors differ from the complementary color scheme. The scheme consists of three colors, the original color and two neighbors of the complement color.



B5D2DB



E3C6C7



B9D3C8

Square

The Square scheme is like the rectangle color scheme, but the four colors are evenly spaced on the color wheel.



E3C6C7



CFCEB9



B4D3D2



CACCE0

Rectangle

The Rectangle color scheme consists of four colors that form a rectangle on the color wheel.



E3C6C7



DDC9BA



B4D3D2



BAD0DF

Sweetspot

The Sweet Spot groups the original color and five complimentary colors.



E3C6C7



FFF5F5



E2C6E3



807979



000000



808080

Same Dimension

The Same Dimension uses a secret algorithm to generate beautiful new colors.



E3C6C7



FFD9DA



E3D3C6



736768



B30006



330002

Inverse Universe

The Inverse Universe completely reimagines the original color for something new.



E3C6C7



FFD9DA



C6D6E3



736768



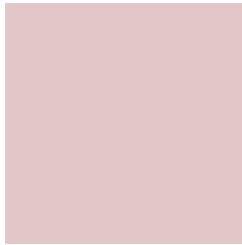
B30006



330002

Previews

White Background



This preview shows how the Hex color E3C6C7 looks on a white background.

Color Contrast Check

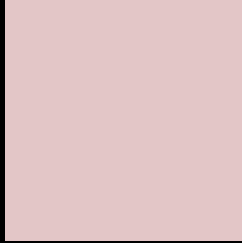
Large Text (above 18pt) WCAG AA × Fail

Any Text WCAG AA × Fail

Large Text (above 18pt) WCAG AAA × Fail

Any Text WCAG AAA × Fail

Black Background



This preview shows how the Hex color E3C6C7 looks on a black background.

Color Contrast Check

Large Text (above 18pt) WCAG AA ✓ Pass

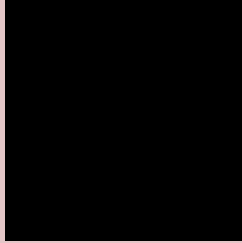
Any Text WCAG AA ✓ Pass

Large Text (above 18pt) WCAG AAA ✓ Pass

Any Text WCAG AAA ✓ Pass

If you want to check with other color combinations, try the [Color Contrast Checker](#).

Hex E3C6C7 Background



This preview shows how black text looks on a background with the Hex color E3C6C7.

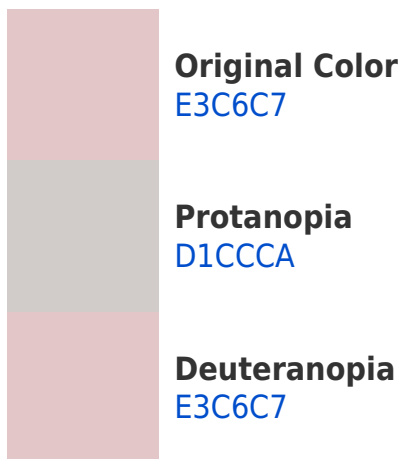


This preview shows how white text looks on a background with the Hex color E3C6C7.

Color Blindness Simulation

Color vision deficiency is a very complex topic, and I could not describe the different causes any better than Wikipedia does, so if you want to learn more, you should check out their [article about color blindness](#).

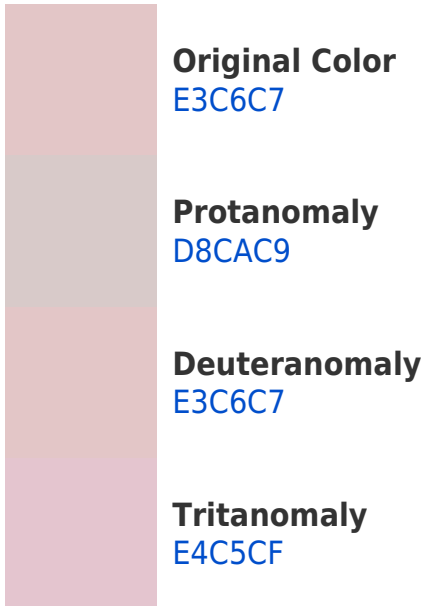
Dichromacy



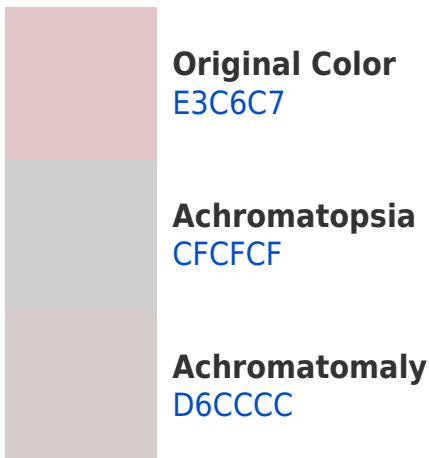


Tritanopia
E5C4D3

Trichromacy



Monochromacy



CSS Examples

Text

The CSS property to change the color of the text to Hex E3C6C7 is called "color". The color property can be set on classes, ids or directly on the HTML element.

This example shows how text in the color #E3C6C7 looks like.

```
.text, #text, p{  
    color:#E3C6C7  
}
```

If you want to add a text shadow in that color use the text-shadow property, you can generate a text shadow directly with our [CSS Text Shadow Generator](#).

Here you see how black text with a 4 pixel #E3C6C7 colored shadow looks like.

```
.shadow{ text-shadow: 4px 4px 2px #E3C6C7
}
```

Border

The CSS property to change the border of an element to Hex E3C6C7 is called "border". The border property can be set on classes, ids or directly on the HTML element.

This example shows the color as border, it can be applied via the CSS property "border" or "border-color".

```
.border, #border, table{ border:4px solid
#E3C6C7 }
```

If only the border color should be changed use the property `border-color`.

```
.border{ border-color:#E3C6C7 }
```

If you want to add a box shadow in that color use:

Here you see how a box with a 4 pixel #E3C6C7 colored shadow looks like.

```
.boxshadow{ -moz-box-shadow:4px 4px 4px  
4px #E3C6C7; -webkit-box-shadow:4px 4px  
4px 4px #E3C6C7; box-shadow:4px 4px 4px  
4px #E3C6C7 }
```

Background

The CSS property to change the background color of an element to Hex E3C6C7 is called "background". The background property can be set on classes, ids or directly on the HTML element.

```
.background, #background, body{  
background:#E3C6C7 }
```

If only the background color should be changed can be used:

```
.background{ background-color:#E3C6C7 }
```

This example shows the color as background, it is applied via the CSS property "background".

To optimize and compress your CSS code, you can use our [online CSS compressor and optimizer](#) based on csstidy. If you want to create a linear or radial gradient as background or border, check our [CSS Gradient Generator](#).

Hey! You found this booklet interesting? Support Converting Colors with the new Membership Option!

The pro membership hides all ads, plus gives you double the colors in the color bucket, and more awesome pro features!

[Learn more, Memberships starting at \\$2.50/m!](#)

**Follow me
on Twitter!**

@ConvertingColor