

Converting Colors

Hex(E3C7CB)

Have a look what the booklet for
Hex(E3C7CB) contains.

Hex(E3C7CB)	3
<i>Conversions</i>	4
<i>Details</i>	6
<i>Harmonies</i>	11
<i>Previews</i>	23
<i>Color Blindness Simulation</i>	26
<i>CSS Examples</i>	29

Color

Hex(E3C7CB)

Conversions

Conversions Part 1

Format	Color
Hex	E3C7CB
RGB	227, 199, 203
RGB Percent	89%, 78%, 80%
CMY	0.1098, 0.2196, 0.2039
CMYK	0.00, 0.12, 0.11, 0.11
HSL	351°, 33%, 84%
HSV	351°, 12%, 89%
XYZ	62.8815, 61.4895, 65.0544
YIQ	207.8280, 15.4040, 7.1800

Conversions

Conversions Part 2

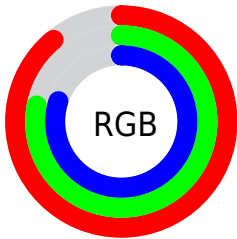
Format	Color
R _Y B	227, 199, 203
Decimal	14927819
CIE Lab	82.64, 10.50, 1.62
CIE LCh	83, 10.624, 8.781
Yxy	61.4895, 0.3320, 0.3246
Android (android.graphics.Color)	4293117899 (0xFFE3C7CB)
YUV	207.8280, -2.3802, 16.8138
Hunter-Lab	78.4153, 5.9130, 5.7029

Details

The Hex color **E3C7CB** is a light color, and the websafe version is hex **FFCCCC**. A complement of this color would be **C7E3DF**, and the grayscale version is **D0D0D0**.

A 20% lighter version of the original color is **FFFFFF**, and **AB9195** is the 20% darker color. If you saturate the color by 10%, you get **E3B0B8**, and if you desaturate by 10%, it is **E3DEDE**.

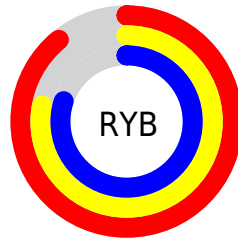
Distribution



Red (89%)

Green (78%)

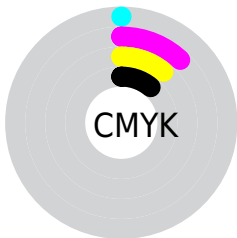
Blue (80%)



Red (89%)

Yellow (78%)

Blue (80%)

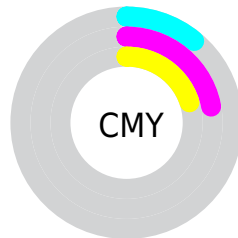


Cyan (0%)

Magenta (12%)

Yellow (11%)

Black (11%)



Cyan (11%)

Magenta (22%)

Yellow (20%)

Brightness & Saturation Gradients

These gradients show how the Hex color E3C7CB changes by changing the brightness by 10 percent. The first figure shows a shift by +10% for each color and the second figure -10%.

Similar to the brightness gradients but the following saturation gradients show a change of the Hex color E3C7CB by changing the saturation by 10% instead.

 E3C7CB

FFFFFF

 E3C7CB

 C7ACB0

 AB9195

 91777B


 775F62

 5E474B

 463034

 2F1B1F

 1C0106

 000000

 E3C7CB

 E3C7CB

 E3B0B8

 E3DEDE

 E39AA4

 E3F4F2

 E38391

 E3FFFF

 E36C7D

 E3566A

 E33F56

 E32843

 E3112F

 E30020

Harmonies

Analogous

The Analogous color harmony consists of three colors that are next to each other on the color wheel.



DEC8D5



E3C7CB



E3C8C2

Triad

The Triadic color harmony groups three colors that are evenly spaced from another and form a triangle on the color wheel.



E3C7CB



C7D1BE



BCD1E0

Complementary

The Complementary color scheme is a pair of colors which are on the opposite of each other on the color wheel.



E3C7CB



C7E3DF

Split Complementary

Split-complementary colors differ from the complementary color scheme. The scheme consists of three colors, the original color and two neighbors of the complement color.



B6D3DA



E3C7CB



BDD3C6

Square

The Square scheme is like the rectangle color scheme, but the four colors are evenly spaced on the color wheel.



E3C7CB



D3CEBA



B6D4D0



C7CEE1

Rectangle

The Rectangle color scheme consists of four colors that form a rectangle on the color wheel.



E3C7CB



DFCABD



B6D4D0



B9D2DE

Sweetspot

The Sweet Spot groups the original color and five complimentary colors.



E3C7CB



FFF5F6



DFC7E3



80797A



000000



808080

Same Dimension

The Same Dimension uses a secret algorithm to generate beautiful new colors.



E3C7CB



FFD9DE



E3D1C7



736769



B30019



330007

Inverse Universe

The Inverse Universe completely reimagines the original color for something new.



E3C7CB



FFD9DE



C7D9E3



736769



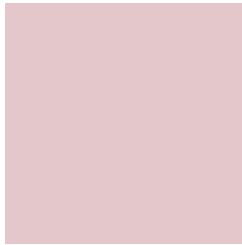
B30019



330007

Previews

White Background



This preview shows how the Hex color E3C7CB looks on a white background.

Color Contrast Check

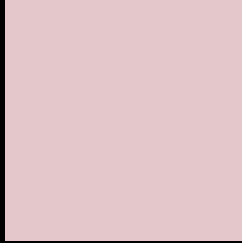
Large Text (above 18pt) WCAG AA × Fail

Any Text WCAG AA × Fail

Large Text (above 18pt) WCAG AAA × Fail

Any Text WCAG AAA × Fail

Black Background



This preview shows how the Hex color E3C7CB looks on a black background.

Color Contrast Check

Large Text (above 18pt) WCAG AA ✓ Pass

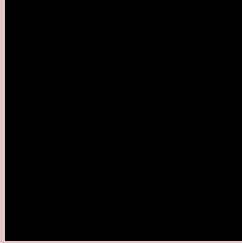
Any Text WCAG AA ✓ Pass

Large Text (above 18pt) WCAG AAA ✓ Pass

Any Text WCAG AAA ✓ Pass

If you want to check with other color combinations, try the [Color Contrast Checker](#).

Hex E3C7CB Background



This preview shows how black text looks on a background with the Hex color E3C7CB.

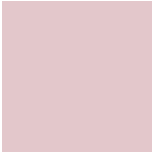
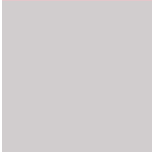
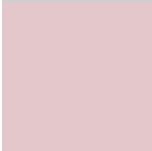


This preview shows how white text looks on a background with the Hex color E3C7CB.

Color Blindness Simulation

Color vision deficiency is a very complex topic, and I could not describe the different causes any better than Wikipedia does, so if you want to learn more, you should check out their [article about color blindness](#).

Dichromacy

	Original Color E3C7CB
	Protanopia D1CDCE
	Deuteranopia E3C7CB



Tritanopia
E4C5D5

Trichromacy



Original Color
E3C7CB

Protanomaly
D8CBCD

Deuteranomaly
E3C7CB

Tritanomaly
E4C6D1

Monochromacy



Original Color
E3C7CB

Achromatopsia
D0D0D0

Achromatomaly
D7CDCE

CSS Examples

Text

The CSS property to change the color of the text to Hex E3C7CB is called "color". The color property can be set on classes, ids or directly on the HTML element.

This example shows how text in the color #E3C7CB looks like.

```
.text, #text, p{  
    color:#E3C7CB  
}
```

If you want to add a text shadow in that color use the text-shadow property, you can generate a text shadow directly with our [CSS Text Shadow Generator](#).

Here you see how black text with a 4 pixel #E3C7CB colored shadow looks like.

```
.shadow{ text-shadow: 4px 4px 2px #E3C7CB
}
```

Border

The CSS property to change the border of an element to Hex E3C7CB is called "border". The border property can be set on classes, ids or directly on the HTML element.

This example shows the color as border, it can be applied via the CSS property "border" or "border-color".

```
.border, #border, table{ border:4px solid
#E3C7CB }
```

If only the border color should be changed use the property `border-color`.

```
.border{ border-color:#E3C7CB }
```

If you want to add a box shadow in that color use:

Here you see how a box with a 4 pixel #E3C7CB colored shadow looks like.

```
.boxshadow{ -moz-box-shadow:4px 4px 4px  
4px #E3C7CB; -webkit-box-shadow:4px 4px  
4px 4px #E3C7CB; box-shadow:4px 4px 4px  
4px #E3C7CB }
```

Background

The CSS property to change the background color of an element to Hex E3C7CB is called "background". The background property can be set on classes, ids or directly on the HTML element.

```
.background, #background, body{  
background:#E3C7CB }
```

If only the background color should be changed can be used:

```
.background{ background-color:#E3C7CB }
```

This example shows the color as background, it is applied via the CSS property "background".

To optimize and compress your CSS code, you can use our [online CSS compressor and optimizer](#) based on csstidy. If you want to create a linear or radial gradient as background or border, check our [CSS Gradient Generator](#).

Hey! You found this booklet interesting? Support Converting Colors with the new Membership Option!

The pro membership hides all ads, plus gives you double the colors in the color bucket, and more awesome pro features!

[Learn more, Memberships starting at \\$2.50/m!](#)

**Follow me
on Twitter!**

@ConvertingColor