

Converting Colors

Hex(E3C9BE)

Have a look what the booklet for
Hex(E3C9BE) contains.

Hex(E3C9BE)	3
<i>Conversions</i>	4
<i>Details</i>	6
<i>Harmonies</i>	11
<i>Previews</i>	23
<i>Color Blindness Simulation</i>	26
<i>CSS Examples</i>	29

Color

Hex(E3C9BE)

Conversions

Conversions Part 1

Format	Color
Hex	E3C9BE
RGB	227, 201, 190
RGB Percent	89%, 79%, 75%
CMY	0.1098, 0.2118, 0.2549
CMYK	0.00, 0.11, 0.16, 0.11
HSL	18°, 40%, 82%
HSV	18°, 16%, 89%
XYZ	61.8595, 61.8219, 57.3877
YIQ	207.5200, 19.0270, 2.0910

Conversions

Conversions Part 2

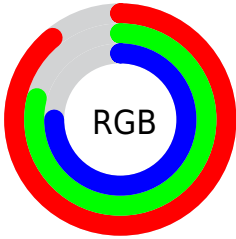
Format	Color
R _Y B	227, 206, 190
Decimal	14928318
CIE Lab	82.82, 7.36, 8.82
CIE LCh	83, 11.491, 50.161
Yxy	61.8219, 0.3416, 0.3414
Android (android.graphics.Color)	4293118398 (0xFFE3C9BE)
YUV	207.5200, -8.6374, 17.0840
Hunter-Lab	78.6269, 2.8372, 11.7646

Details

The Hex color **E3C9BE** is a light color, and the websafe version is hex **FFCCCC**. A complement of this color would be **BED8E3**, and the grayscale version is **D0D0D0**.

A 20% lighter version of the original color is **FFFFFF6**, and **AB9389** is the 20% darker color. If you saturate the color by 10%, you get **E3B9A7**, and if you desaturate by 10%, it is **E3D9D5**.

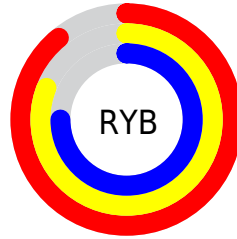
Distribution



Red (89%)

Green (79%)

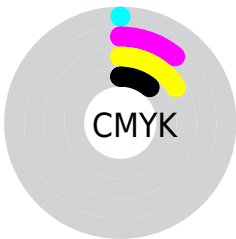
Blue (75%)



Red (89%)

Yellow (81%)

Blue (75%)

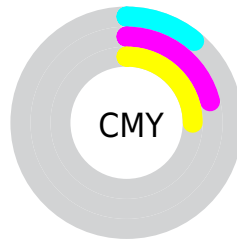


Cyan (0%)

Magenta (11%)

Yellow (16%)

Black (11%)



Cyan (11%)

Magenta (21%)

Yellow (25%)

Brightness & Saturation Gradients

These gradients show how the Hex color E3C9BE changes by changing the brightness by 10 percent. The first figure shows a shift by +10% for each color and the second figure -10%.

Similar to the brightness gradients but the following saturation gradients show a change of the Hex color E3C9BE by changing the saturation by 10% instead.

 E3C9BE

 E3C9BE

FFFFFFF

 C7AEA3

 FFFFFF6

 AB9389

 91796F

 776057

 5E4940

 46322A

 2F1D15

 1A0400

 000000

 E3C9BE

 E3C9BE

 E3B9A7

 E3D9D5

 E3A991

 E3E9EB

 E3997A

 E3F9FF

 E38963

 E3FFFF

 E3794D

 E36936

 E3591F

 E34908

 E34300

Harmonies

Analogous

The Analogous color harmony consists of three colors that are next to each other on the color wheel.



E6C7C7



E3C9BE



DBCCB9

Triad

The Triadic color harmony groups three colors that are evenly spaced from another and form a triangle on the color wheel.



E3C9BE



B8D4CA



CCCDE2

Complementary

The Complementary color scheme is a pair of colors which are on the opposite of each other on the color wheel.



E3C9BE



BED8E3

Split Complementary

Split-complementary colors differ from the complementary color scheme. The scheme consists of three colors, the original color and two neighbors of the complement color.



BFD0E3



E3C9BE



B3D5D5

Square

The Square scheme is like the rectangle color scheme, but the four colors are evenly spaced on the color wheel.



E3C9BE



C3D3C0



B6D3DE



D9C9DC

Rectangle

The Rectangle color scheme consists of four colors that form a rectangle on the color wheel.



E3C9BE



D3CFB9



B6D3DE



C7CEE3

Sweetspot

The Sweet Spot groups the original color and five complimentary colors.



E3C9BE



FFF6F2



E3BED9



807A78



000000



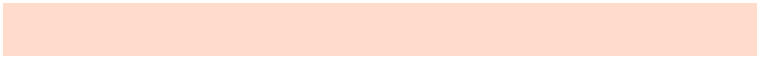
808080

Same Dimension

The Same Dimension uses a secret algorithm to generate beautiful new colors.



E3C9BE



FFDBCC



E3DBBE



736B67



B33500



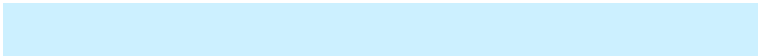
330F00

Inverse Universe

The Inverse Universe completely reimagines the original color for something new.



BED8E3



CCF0FF



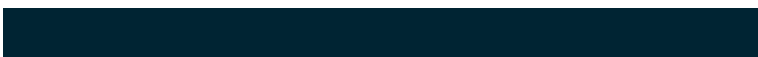
BEC6E3



676F73



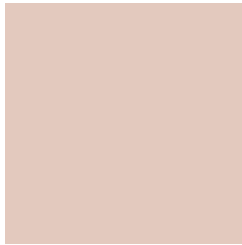
007DB3



002433

Previews

White Background



This preview shows how the Hex color E3C9BE looks on a white background.

Color Contrast Check

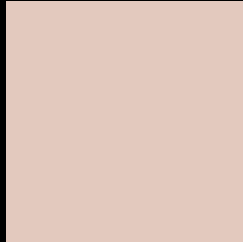
Large Text (above 18pt) WCAG AA × Fail

Any Text WCAG AA × Fail

Large Text (above 18pt) WCAG AAA × Fail

Any Text WCAG AAA × Fail

Black Background



This preview shows how the Hex color E3C9BE looks on a black background.

Color Contrast Check

Large Text (above 18pt) WCAG AA ✓ Pass

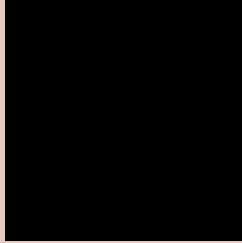
Any Text WCAG AA ✓ Pass

Large Text (above 18pt) WCAG AAA ✓ Pass

Any Text WCAG AAA ✓ Pass

If you want to check with other color combinations, try the [Color Contrast Checker](#).

Hex E3C9BE Background



This preview shows how black text looks on a background with the Hex color E3C9BE.



This preview shows how white text looks on a background with the Hex color E3C9BE.

Color Blindness Simulation

Color vision deficiency is a very complex topic, and I could not describe the different causes any better than Wikipedia does, so if you want to learn more, you should check out their [article about color blindness](#).

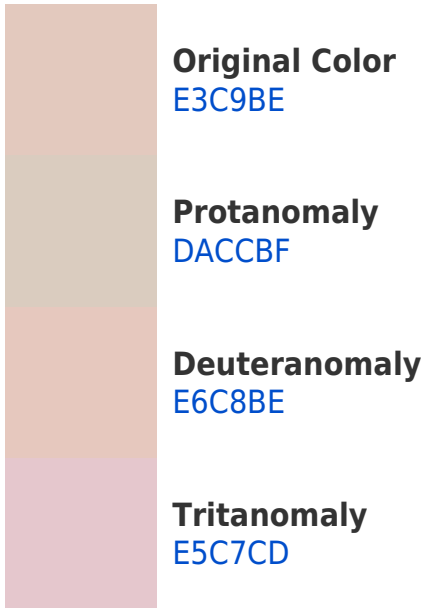
Dichromacy



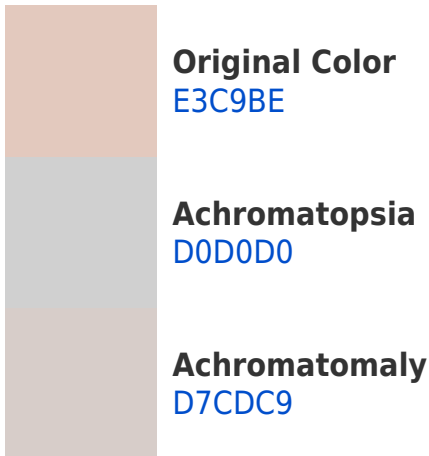


Tritanopia
E6C6D5

Trichromacy



Monochromacy



CSS Examples

Text

The CSS property to change the color of the text to Hex E3C9BE is called "color". The color property can be set on classes, ids or directly on the HTML element.

This example shows how text in the color #E3C9BE looks like.

```
.text, #text, p{  
    color:#E3C9BE  
}
```

If you want to add a text shadow in that color use the text-shadow property, you can generate a text shadow directly with our [CSS Text Shadow Generator](#).

Here you see how black text with a 4 pixel #E3C9BE colored shadow looks like.

```
.shadow{ text-shadow: 4px 4px 2px #E3C9BE }  
}
```

Border

The CSS property to change the border of an element to Hex E3C9BE is called "border". The border property can be set on classes, ids or directly on the HTML element.

This example shows the color as border, it can be applied via the CSS property "border" or "border-color".

```
.border, #border, table{ border:4px solid #E3C9BE }  
}
```

If only the border color should be changed use the property `border-color`.

```
.border{ border-color:#E3C9BE }
```

If you want to add a box shadow in that color use:

Here you see how a box with a 4 pixel #E3C9BE colored shadow looks like.

```
.boxshadow{ -moz-box-shadow:4px 4px 4px  
4px #E3C9BE; -webkit-box-shadow:4px 4px  
4px 4px #E3C9BE; box-shadow:4px 4px 4px  
4px #E3C9BE }
```

Background

The CSS property to change the background color of an element to Hex E3C9BE is called "background". The background property can be set on classes, ids or directly on the HTML element.

```
.background, #background, body{  
background:#E3C9BE }
```

If only the background color should be changed can be used:

```
.background{ background-color:#E3C9BE }
```

This example shows the color as background, it is applied via the CSS property "background".

To optimize and compress your CSS code, you can use our [online CSS compressor and optimizer](#) based on csstidy. If you want to create a linear or radial gradient as background or border, check our [CSS Gradient Generator](#).

Hey! You found this booklet interesting? Support Converting Colors with the new Membership Option!

The pro membership hides all ads, plus gives you double the colors in the color bucket, and more awesome pro features!

[Learn more, Memberships starting at \\$2.50/m!](#)

**Follow me
on Twitter!**

@ConvertingColor