

Converting Colors

Hex(E3C9CB)

Have a look what the booklet for
Hex(E3C9CB) contains.

Hex(E3C9CB)	3
<i>Conversions</i>	4
<i>Details</i>	6
<i>Harmonies</i>	11
<i>Previews</i>	23
<i>Color Blindness Simulation</i>	26
<i>CSS Examples</i>	29

Color

Hex(E3C9CB)

Conversions

Conversions Part 1

Format	Color
Hex	E3C9CB
RGB	227, 201, 203
RGB Percent	89%, 79%, 80%
CMY	0.1098, 0.2118, 0.2039
CMYK	0.00, 0.11, 0.11, 0.11
HSL	355°, 32%, 84%
HSV	355°, 11%, 89%
XYZ	63.3447, 62.4160, 65.2088
YIQ	209.0020, 14.8540, 6.1340

Conversions

Conversions Part 2

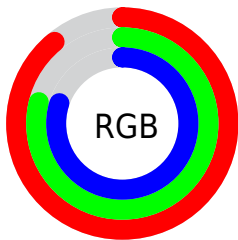
Format	Color
R _Y B	227, 201, 203
Decimal	14928331
CIE Lab	83.13, 9.44, 2.34
CIE LCh	83, 9.727, 13.911
Yxy	62.4160, 0.3317, 0.3268
Android (android.graphics.Color)	4293118411 (0xFFE3C9CB)
YUV	209.0020, -2.9590, 15.7842
Hunter-Lab	79.0038, 4.8634, 6.3654

Details

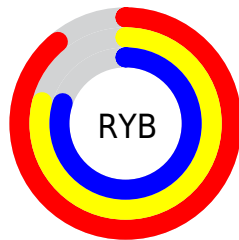
The Hex color **E3C9CB** is a light color, and the websafe version is hex **CCCCCC**. A complement of this color would be **C9E3E1**, and the grayscale version is **D1D1D1**.

A 20% lighter version of the original color is **FFFFFF**, and **AB9395** is the 20% darker color. If you saturate the color by 10%, you get **E3B2B6**, and if you desaturate by 10%, it is **E3E0E0**.

Distribution



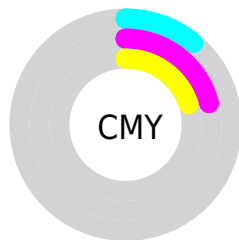
- Red (89%)
- Green (79%)
- Blue (80%)



- Red (89%)
- Yellow (79%)
- Blue (80%)



- Cyan (0%)
- Magenta (11%)
- Yellow (11%)
- Black (11%)



- Cyan (11%)
- Magenta (21%)
- Yellow (20%)

Brightness & Saturation Gradients

These gradients show how the Hex color E3C9CB changes by changing the brightness by 10 percent. The first figure shows a shift by +10% for each color and the second figure -10%.

Similar to the brightness gradients but the following saturation gradients show a change of the Hex color E3C9CB by changing the saturation by 10% instead.


 E3C9CB

FFFFFF

 E3C9CB

 C7AE80

 AB9395

 91797B

 776062

 5E494B

 463234

 2F1D1F

 1C0406

 000000

 E3C9CB

 E3C9CB

 E3B2B6

 E3E0E0

 E39CA1

 E3F6F5

 E3858C

 E3FFFF

 E36E77

 E35862

 E3414D

 E32A38

 E31323

 E30011

Harmonies

Analogous

The Analogous color harmony consists of three colors that are next to each other on the color wheel.



DFC9D4



E3C9CB



E2CAC3

Triad

The Triadic color harmony groups three colors that are evenly spaced from another and form a triangle on the color wheel.



E3C9CB



C8D2C2



C0D1E0

Complementary

The Complementary color scheme is a pair of colors which are on the opposite of each other on the color wheel.



E3C9CB



C9E3E1

Split Complementary

Split-complementary colors differ from the complementary color scheme. The scheme consists of three colors, the original color and two neighbors of the complement color.



BAD4DB



E3C9CB



BED4CA

Square

The Square scheme is like the rectangle color scheme, but the four colors are evenly spaced on the color wheel.



E3C9CB



D2D0BD



B9D5D3



CBCEE1

Rectangle

The Rectangle color scheme consists of four colors that form a rectangle on the color wheel.



E3C9CB



DECCBF



B9D5D3



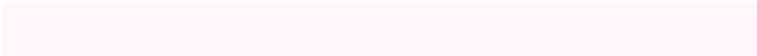
BED2DF

Sweetspot

The Sweet Spot groups the original color and five complimentary colors.



E3C9CB



FFF7F8



E1C9E3



807A7B



000000



808080

Same Dimension

The Same Dimension uses a secret algorithm to generate beautiful new colors.



E3C9CB



FFDBDE



E3D4C9



736768



B3000E



330004

Inverse Universe

The Inverse Universe completely reimagines the original color for something new.



E3C9CB



FFDBDE



C9D8E3



736768



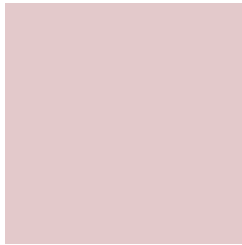
B3000E



330004

Previews

White Background



This preview shows how the Hex color E3C9CB looks on a white background.

Color Contrast Check

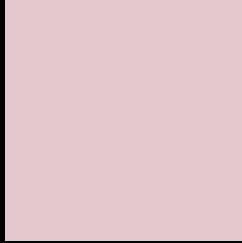
Large Text (above 18pt) WCAG AA × Fail

Any Text WCAG AA × Fail

Large Text (above 18pt) WCAG AAA × Fail

Any Text WCAG AAA × Fail

Black Background



This preview shows how the Hex color E3C9CB looks on a black background.

Color Contrast Check

Large Text (above 18pt) WCAG AA ✓ Pass

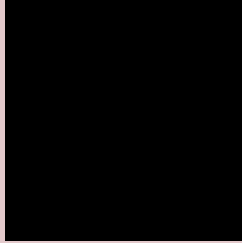
Any Text WCAG AA ✓ Pass

Large Text (above 18pt) WCAG AAA ✓ Pass

Any Text WCAG AAA ✓ Pass

If you want to check with other color combinations, try the [Color Contrast Checker](#).

Hex E3C9CB Background



This preview shows how black text looks on a background with the Hex color E3C9CB.

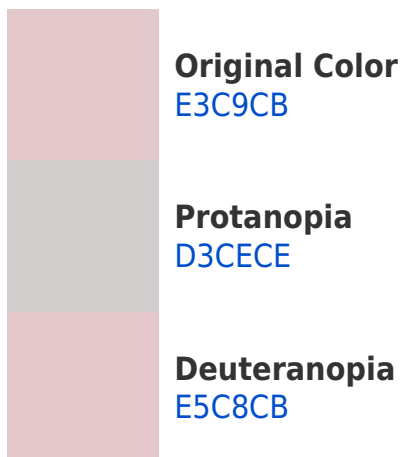


This preview shows how white text looks on a background with the Hex color E3C9CB.

Color Blindness Simulation

Color vision deficiency is a very complex topic, and I could not describe the different causes any better than Wikipedia does, so if you want to learn more, you should check out their [article about color blindness](#).

Dichromacy





Tritanopia
E5C7D7

Trichromacy



Original Color
E3C9CB

Protanomaly
D9CCCD

Deuteranomaly
E4C8CB

Tritanomaly
E4C8D3

Monochromacy



Original Color
E3C9CB

Achromatopsia
D1D1D1

Achromatomaly
D8CECF

CSS Examples

Text

The CSS property to change the color of the text to Hex E3C9CB is called "color". The color property can be set on classes, ids or directly on the HTML element.

This example shows how text in the color #E3C9CB looks like.

```
.text, #text, p{  
    color:#E3C9CB  
}
```

If you want to add a text shadow in that color use the text-shadow property, you can generate a text shadow directly with our [CSS Text Shadow Generator](#).

Here you see how black text with a 4 pixel #E3C9CB colored shadow looks like.

```
.shadow{ text-shadow: 4px 4px 2px #E3C9CB }  
}
```

Border

The CSS property to change the border of an element to Hex E3C9CB is called "border". The border property can be set on classes, ids or directly on the HTML element.

This example shows the color as border, it can be applied via the CSS property "border" or "border-color".

```
.border, #border, table{ border:4px solid #E3C9CB }  
}
```

If only the border color should be changed use the property `border-color`.

```
.border{ border-color:#E3C9CB }
```

If you want to add a box shadow in that color use:

Here you see how a box with a 4 pixel #E3C9CB colored shadow looks like.

```
.boxshadow{ -moz-box-shadow:4px 4px 4px  
4px #E3C9CB; -webkit-box-shadow:4px 4px  
4px 4px #E3C9CB; box-shadow:4px 4px 4px  
4px #E3C9CB }
```

Background

The CSS property to change the background color of an element to Hex E3C9CB is called "background". The background property can be set on classes, ids or directly on the HTML element.

```
.background, #background, body{  
background:#E3C9CB }
```

If only the background color should be changed can be used:

```
.background{ background-color:#E3C9CB }
```

This example shows the color as background, it is applied via the CSS property "background".

To optimize and compress your CSS code, you can use our [online CSS compressor and optimizer](#) based on csstidy. If you want to create a linear or radial gradient as background or border, check our [CSS Gradient Generator](#).

Hey! You found this booklet interesting? Support Converting Colors with the new Membership Option!

The pro membership hides all ads, plus gives you double the colors in the color bucket, and more awesome pro features!

[Learn more, Memberships starting at \\$2.50/m!](#)

**Follow me
on Twitter!**

@ConvertingColor