

Converting Colors

Hex(E3C9D2)

Have a look what the booklet for
Hex(E3C9D2) contains.

Hex(E3C9D2)	3
<i>Conversions</i>	4
<i>Details</i>	6
<i>Harmonies</i>	11
<i>Previews</i>	23
<i>Color Blindness Simulation</i>	26
<i>CSS Examples</i>	29

Color

Hex(E3C9D2)

Conversions

Conversions Part 1

Format	Color
Hex	E3C9D2
RGB	227, 201, 210
RGB Percent	89%, 79%, 82%
CMY	0.1098, 0.2118, 0.1765
CMYK	0.00, 0.11, 0.07, 0.11
HSL	339°, 32%, 84%
HSV	339°, 11%, 89%
XYZ	64.1981, 62.7573, 69.7025
YIQ	209.8000, 12.6070, 8.3110

Conversions

Conversions Part 2

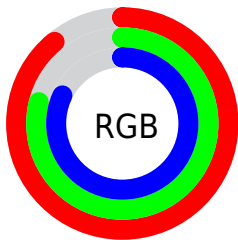
Format	Color
R _Y B	227, 201, 210
Decimal	14928338
CIE Lab	83.31, 10.62, -1.14
CIE LCh	83, 10.678, 353.886
Yxy	62.7573, 0.3264, 0.3191
Android (android.graphics.Color)	4293118418 (0xFFE3C9D2)
YUV	209.8000, 0.0986, 15.0844
Hunter-Lab	79.2195, 6.0190, 3.2864

Details

The Hex color **E3C9D2** is a light color, and the websafe version is hex **CCCCCC**. A complement of this color would be **C9E3DA**, and the grayscale version is **D2D2D2**.

A 20% lighter version of the original color is **FFFFFF**, and **AC939C** is the 20% darker color. If you saturate the color by 10%, you get **E3B2C3**, and if you desaturate by 10%, it is **E3E0E1**.

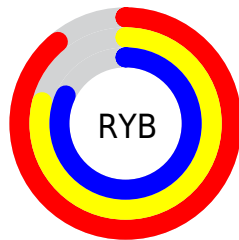
Distribution



Red (89%)

Green (79%)

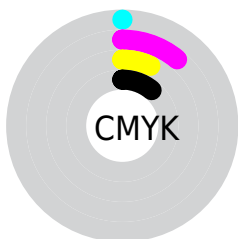
Blue (82%)



Red (89%)

Yellow (79%)

Blue (82%)

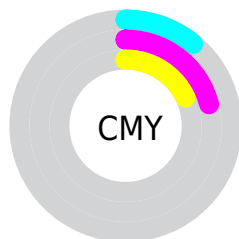


Cyan (0%)

Magenta (11%)

Yellow (7%)

Black (11%)



Cyan (11%)

Magenta (21%)

Yellow (18%)

Brightness & Saturation Gradients

These gradients show how the Hex color E3C9D2 changes by changing the brightness by 10 percent. The first figure shows a shift by +10% for each color and the second figure -10%.

Similar to the brightness gradients but the following saturation gradients show a change of the Hex color E3C9D2 by changing the saturation by 10% instead.


 E3C9D2

FFFFFF

 E3C9D2

 C7AEB6

 AC939C

 917982

 776068

 5E4950

 46323A

 301D24

 1C040F

 000000

 E3C9D2

 E3C9D2

 E3B2C3

 E3E0E1

 E39CB4

 E3F6F0

 E385A5

 E3FFFF

 E36E97

 E35888

 E34179

 E32A6A

 E3135B

 E3004F

Harmonies

Analogous

The Analogous color harmony consists of three colors that are next to each other on the color wheel.



DBCBD2



E3C9D2



E6C9C8

Triad

The Triadic color harmony groups three colors that are evenly spaced from another and form a triangle on the color wheel.



E3C9D2



CFD1BD



BAD4DF

Complementary

The Complementary color scheme is a pair of colors which are on the opposite of each other on the color wheel.



E3C9D2



C9E3DA

Split Complementary

Split-complementary colors differ from the complementary color scheme. The scheme consists of three colors, the original color and two neighbors of the complement color.



B7D5D7



E3C9D2



C4D4C3

Square

The Square scheme is like the rectangle color scheme, but the four colors are evenly spaced on the color wheel.



E3C9D2



DACEBC



BBD6CD



C3D1E3

Rectangle

The Rectangle color scheme consists of four colors that form a rectangle on the color wheel.



E3C9D2



E4CAC2



BBD6CD



B8D5DD

Sweetspot

The Sweet Spot groups the original color and five complimentary colors.



E3C9D2



FFF7FA



DAC9E3



807A7C



000000



808080

Same Dimension

The Same Dimension uses a secret algorithm to generate beautiful new colors.



E3C9D2



FFDBE8



E3CDC9



73676B



B3003E



330012

Inverse Universe

The Inverse Universe completely reimagines the original color for something new.



E3C9D2



FFDBE8



C9DFE3



73676B



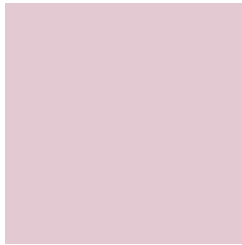
B3003E



330012

Previews

White Background



This preview shows how the Hex color E3C9D2 looks on a white background.

Color Contrast Check

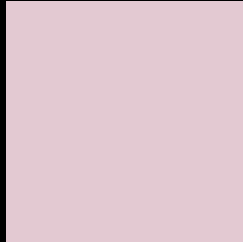
Large Text (above 18pt) WCAG AA × Fail

Any Text WCAG AA × Fail

Large Text (above 18pt) WCAG AAA × Fail

Any Text WCAG AAA × Fail

Black Background



This preview shows how the Hex color E3C9D2 looks on a black background.

Color Contrast Check

Large Text (above 18pt) WCAG AA ✓ Pass

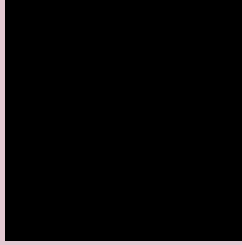
Any Text WCAG AA ✓ Pass

Large Text (above 18pt) WCAG AAA ✓ Pass

Any Text WCAG AAA ✓ Pass

If you want to check with other color combinations, try the [Color Contrast Checker](#).

Hex E3C9D2 Background



This preview shows how black text looks on a background with the Hex color E3C9D2.

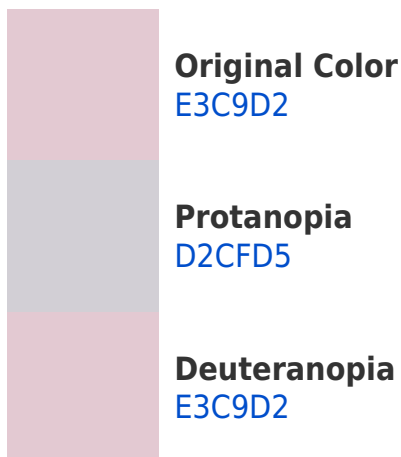


This preview shows how white text looks on a background with the Hex color E3C9D2.

Color Blindness Simulation

Color vision deficiency is a very complex topic, and I could not describe the different causes any better than Wikipedia does, so if you want to learn more, you should check out their [article about color blindness](#).

Dichromacy





Tritanopia
E4C8D8

Trichromacy



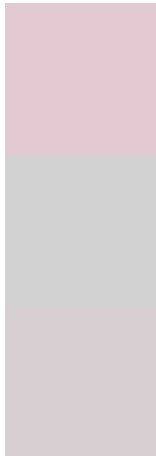
Original Color
E3C9D2

Protanomaly
D8CDD4

Deuteranomaly
E3C9D2

Tritanomaly
E4C8D6

Monochromacy



Original Color
E3C9D2

Achromatopsia
D2D2D2

Achromatomaly
D8CFD2

CSS Examples

Text

The CSS property to change the color of the text to Hex E3C9D2 is called "color". The color property can be set on classes, ids or directly on the HTML element.

This example shows how text in the color #E3C9D2 looks like.

```
.text, #text, p{  
    color:#E3C9D2  
}
```

If you want to add a text shadow in that color use the text-shadow property, you can generate a text shadow directly with our [CSS Text Shadow Generator](#).

Here you see how black text with a 4 pixel #E3C9D2 colored shadow looks like.

```
.shadow{ text-shadow: 4px 4px 2px #E3C9D2
}
```

Border

The CSS property to change the border of an element to Hex E3C9D2 is called "border". The border property can be set on classes, ids or directly on the HTML element.

This example shows the color as border, it can be applied via the CSS property "border" or "border-color".

```
.border, #border, table{ border:4px solid
#E3C9D2 }
```

If only the border color should be changed use the property `border-color`.

```
.border{ border-color:#E3C9D2 }
```

If you want to add a box shadow in that color use:

Here you see how a box with a 4 pixel #E3C9D2 colored shadow looks like.

```
.boxshadow{ -moz-box-shadow:4px 4px 4px  
4px #E3C9D2; -webkit-box-shadow:4px 4px  
4px 4px #E3C9D2; box-shadow:4px 4px 4px  
4px #E3C9D2 }
```

Background

The CSS property to change the background color of an element to Hex E3C9D2 is called "background". The background property can be set on classes, ids or directly on the HTML element.

```
.background, #background, body{  
background:#E3C9D2 }
```

If only the background color should be changed can be used:

```
.background{ background-color:#E3C9D2 }
```

This example shows the color as background, it is applied via the CSS property "background".

To optimize and compress your CSS code, you can use our [online CSS compressor and optimizer](#) based on csstidy. If you want to create a linear or radial gradient as background or border, check our [CSS Gradient Generator](#).

Hey! You found this booklet interesting? Support Converting Colors with the new Membership Option!

The pro membership hides all ads, plus gives you double the colors in the color bucket, and more awesome pro features!

[Learn more, Memberships starting at \\$2.50/m!](#)

**Follow me
on Twitter!**

@ConvertingColor