

Converting Colors

Hex(E3CAC9)

Have a look what the booklet for
Hex(E3CAC9) contains.

Hex(E3CAC9)	3
<i>Conversions</i>	4
<i>Details</i>	6
<i>Harmonies</i>	11
<i>Previews</i>	23
<i>Color Blindness Simulation</i>	26
<i>CSS Examples</i>	29

Color

Hex(E3CAC9)

Conversions

Conversions Part 1

Format	Color
Hex	E3CAC9
RGB	227, 202, 201
RGB Percent	89%, 79%, 79%
CMY	0.1098, 0.2078, 0.2118
CMYK	0.00, 0.11, 0.11, 0.11
HSL	2°, 32%, 84%
HSV	2°, 11%, 89%
XYZ	63.3417, 62.7890, 64.0394
YIQ	209.3610, 15.2210, 4.9890

Conversions

Conversions Part 2

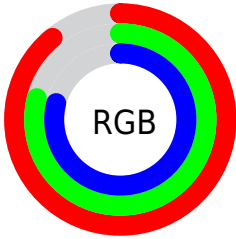
Format	Color
R _Y B	227, 202, 201
Decimal	14928585
CIE Lab	83.33, 8.59, 3.69
CIE LCh	83, 9.346, 23.270
Yxy	62.7890, 0.3331, 0.3302
Android (android.graphics.Color)	4293118665 (0xFFE3CAC9)
YUV	209.3610, -4.1220, 15.4694
Hunter-Lab	79.2395, 4.0184, 7.5510

Details

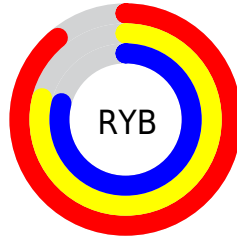
The Hex color **E3CAC9** is a light color, and the websafe version is hex **CCCCCC**. A complement of this color would be **C9E2E3**, and the grayscale version is **D1D1D1**.

A 20% lighter version of the original color is **FFFFFF**, and **AB9493** is the 20% darker color. If you saturate the color by 10%, you get **E3B4B2**, and if you desaturate by 10%, it is **E3E0E0**.

Distribution



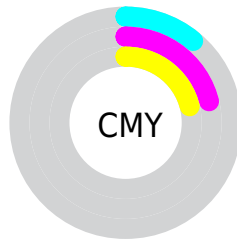
- Red (89%)
- Green (79%)
- Blue (79%)



- Red (89%)
- Yellow (79%)
- Blue (79%)



- Cyan (0%)
- Magenta (11%)
- Yellow (11%)
- Black (11%)



- Cyan (11%)
- Magenta (21%)
- Yellow (21%)

Brightness & Saturation Gradients

These gradients show how the Hex color E3CAC9 changes by changing the brightness by 10 percent. The first figure shows a shift by +10% for each color and the second figure -10%.

Similar to the brightness gradients but the following saturation gradients show a change of the Hex color E3CAC9 by changing the saturation by 10% instead.


 E3CAC9

FFFFFF

 E3CAC9

 C7AFAE

 AB9493

 917A79

 776161

 5E4A49

 463332

 2F1E1D

 1C0504

 000000

 E3CAC9

 E3CAC9

 E3B4B2

 E3E0E0

 E39E9C

 E3F6F6

 E38985

 E3FFFF

 E3736E

 E35D58

 E34741

 E3312A

 E31B13

 E30900

Harmonies

Analogous

The Analogous color harmony consists of three colors that are next to each other on the color wheel.



E1CAD2



E3CAC9



E0CCC2

Triad

The Triadic color harmony groups three colors that are evenly spaced from another and form a triangle on the color wheel.



E3CAC9



C5D4C5



C4D1E1

Complementary

The Complementary color scheme is a pair of colors which are on the opposite of each other on the color wheel.



E3CAC9



C9E2E3

Split Complementary

Split-complementary colors differ from the complementary color scheme. The scheme consists of three colors, the original color and two neighbors of the complement color.



BDD3DD



E3CAC9



BDD5CD

Square

The Square scheme is like the rectangle color scheme, but the four colors are evenly spaced on the color wheel.



E3CAC9



CFD1BF



BAD5D6



CFCEE0

Rectangle

The Rectangle color scheme consists of four colors that form a rectangle on the color wheel.



E3CAC9



DCCDBF



BAD5D6



C1D2E0

Sweetspot

The Sweet Spot groups the original color and five complimentary colors.



E3CAC9



FFF8F7



E3C9E2



807B7A



000000



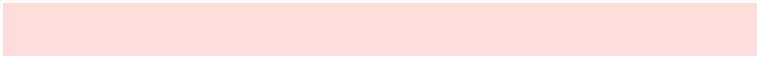
808080

Same Dimension

The Same Dimension uses a secret algorithm to generate beautiful new colors.



E3CAC9



FFDDBB



E3D7C9



736867



B30700



330200

Inverse Universe

The Inverse Universe completely reimagines the original color for something new.



C9E2E3



DBFEFF



C9D5E3



677273



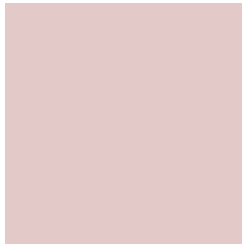
00ACB3



003133

Previews

White Background



This preview shows how the Hex color E3CAC9 looks on a white background.

Color Contrast Check

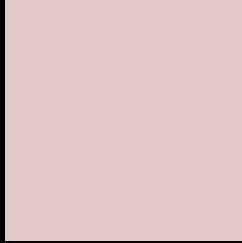
Large Text (above 18pt) WCAG AA × Fail

Any Text WCAG AA × Fail

Large Text (above 18pt) WCAG AAA × Fail

Any Text WCAG AAA × Fail

Black Background



This preview shows how the Hex color E3CAC9 looks on a black background.

Color Contrast Check

Large Text (above 18pt) WCAG AA ✓ Pass

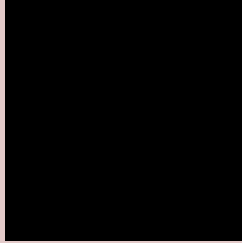
Any Text WCAG AA ✓ Pass

Large Text (above 18pt) WCAG AAA ✓ Pass

Any Text WCAG AAA ✓ Pass

If you want to check with other color combinations, try the [Color Contrast Checker](#).

Hex E3CAC9 Background



This preview shows how black text looks on a background with the Hex color E3CAC9.



This preview shows how white text looks on a background with the Hex color E3CAC9.

Color Blindness Simulation

Color vision deficiency is a very complex topic, and I could not describe the different causes any better than Wikipedia does, so if you want to learn more, you should check out their [article about color blindness](#).

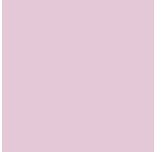
Dichromacy



Original Color
E3CAC9

Protanopia
D4CFCC

Deuteranopia
E6C9C9



Tritanopia
E5C8D7

Trichromacy



Original Color
E3CAC9

Protanomaly
D9CDCB

Deuteranomaly
E5C9C9

Tritanomaly
E4C9D2

Monochromacy



Original Color
E3CAC9

Achromatopsia
D1D1D1

Achromatomaly
D8CECE

CSS Examples

Text

The CSS property to change the color of the text to Hex E3CAC9 is called "color". The color property can be set on classes, ids or directly on the HTML element.

This example shows how text in the color #E3CAC9 looks like.

```
.text, #text, p{  
    color:#E3CAC9  
}
```

If you want to add a text shadow in that color use the text-shadow property, you can generate a text shadow directly with our [CSS Text Shadow Generator](#).

Here you see how black text with a 4 pixel #E3CAC9 colored shadow looks like.

```
.shadow{ text-shadow: 4px 4px 2px #E3CAC9
}
```

Border

The CSS property to change the border of an element to Hex E3CAC9 is called "border". The border property can be set on classes, ids or directly on the HTML element.

This example shows the color as border, it can be applied via the CSS property "border" or "border-color".

```
.border, #border, table{ border:4px solid
#E3CAC9 }
```

If only the border color should be changed use the property `border-color`.

```
.border{ border-color:#E3CAC9 }
```

If you want to add a box shadow in that color use:

Here you see how a box with a 4 pixel #E3CAC9 colored shadow looks like.

```
.boxshadow{ -moz-box-shadow:4px 4px 4px  
4px #E3CAC9; -webkit-box-shadow:4px 4px  
4px 4px #E3CAC9; box-shadow:4px 4px 4px  
4px #E3CAC9 }
```

Background

The CSS property to change the background color of an element to Hex E3CAC9 is called "background". The background property can be set on classes, ids or directly on the HTML element.

```
.background, #background, body{  
background:#E3CAC9 }
```

If only the background color should be changed can be used:

```
.background{ background-color:#E3CAC9 }
```

This example shows the color as background, it is applied via the CSS property "background".

To optimize and compress your CSS code, you can use our [online CSS compressor and optimizer](#) based on csstidy. If you want to create a linear or radial gradient as background or border, check our [CSS Gradient Generator](#).

Hey! You found this booklet interesting? Support Converting Colors with the new Membership Option!

The pro membership hides all ads, plus gives you double the colors in the color bucket, and more awesome pro features!

[Learn more, Memberships starting at \\$2.50/m!](#)

**Follow me
on Twitter!**

@ConvertingColor