

Converting Colors

Hex(E3CCCD)

Have a look what the booklet for
Hex(E3CCCD) contains.

Hex(E3CCCD)	3
<i>Conversions</i>	4
<i>Details</i>	6
<i>Harmonies</i>	11
<i>Previews</i>	23
<i>Color Blindness Simulation</i>	26
<i>CSS Examples</i>	29

Color

Hex(E3CCCD)

Conversions

Conversions Part 1

Format	Color
Hex	E3CCCD
RGB	227, 204, 205
RGB Percent	89%, 80%, 80%
CMY	0.1098, 0.2000, 0.1961
CMYK	0.00, 0.10, 0.10, 0.11
HSL	357°, 29%, 85%
HSV	357°, 10%, 89%
XYZ	64.2909, 63.9244, 66.7078
YIQ	210.9910, 13.3870, 5.1870

Conversions

Conversions Part 2

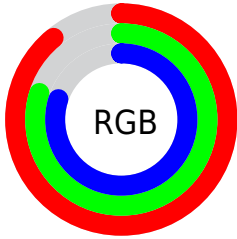
Format	Color
R _Y B	227, 204, 205
Decimal	14929101
CIE Lab	83.93, 8.19, 2.42
CIE LCh	84, 8.542, 16.476
Yxy	63.9244, 0.3298, 0.3279
Android (android.graphics.Color)	4293119181 (0xFFE3CCCD)
YUV	210.9910, -2.9536, 14.0399
Hunter-Lab	79.9527, 3.6165, 6.4989

Details

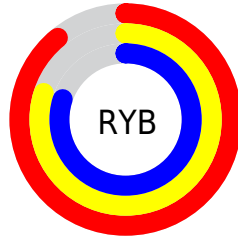
The Hex color **E3CCCD** is a light color, and the websafe version is hex **CCCCCC**. A complement of this color would be **CCE3E2**, and the grayscale version is **D3D3D3**.

A 20% lighter version of the original color is **FFFFFF**, and **AC9697** is the 20% darker color. If you saturate the color by 10%, you get **E3B5B7**, and if you desaturate by 10%, it is **E3E3E3**.

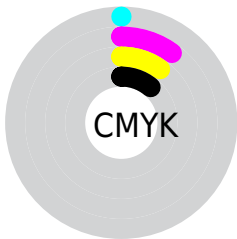
Distribution



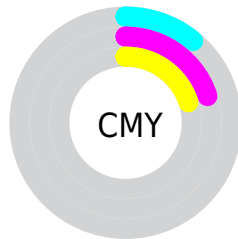
- Red (89%)
- Green (80%)
- Blue (80%)



- Red (89%)
- Yellow (80%)
- Blue (80%)



- Cyan (0%)
- Magenta (10%)
- Yellow (10%)
- Black (11%)



- Cyan (11%)
- Magenta (20%)
- Yellow (20%)

Brightness & Saturation Gradients

These gradients show how the Hex color E3CCCD changes by changing the brightness by 10 percent. The first figure shows a shift by +10% for each color and the second figure -10%.

Similar to the brightness gradients but the following saturation gradients show a change of the Hex color E3CCCD by changing the saturation by 10% instead.

 E3CCCD

FFFFFF

 E3CCCD

 C7B1B2

 AC9697

 917C7D

 776364

 5E4B4C

 463536

 301F20

 1C0809

 000000

 E3CCCD

 E3CCCD

 E3B5B7

 E3E3E3

 E39FA2

 E3F9F8

 E3888C

 E3FFFF

 E37176

 E35B60

 E3444B

 E32D35

 E3161F

 E3000A

Harmonies

Analogous

The Analogous color harmony consists of three colors that are next to each other on the color wheel.



E0CCD5



E3CCCD



E2CDC6

Triad

The Triadic color harmony groups three colors that are evenly spaced from another and form a triangle on the color wheel.



E3CCCD



CAD4C6



C5D3E1

Complementary

The Complementary color scheme is a pair of colors which are on the opposite of each other on the color wheel.



E3CCCD



CCE3E2

Split Complementary

Split-complementary colors differ from the complementary color scheme. The scheme consists of three colors, the original color and two neighbors of the complement color.



BFD5DD



E3CCCD



C2D6CD

Square

The Square scheme is like the rectangle color scheme, but the four colors are evenly spaced on the color wheel.



E3CCCD



D3D2C2



BED6D5



CFD0E1

Rectangle

The Rectangle color scheme consists of four colors that form a rectangle on the color wheel.



E3CCCD



DECFC3



BED6D5



C3D4E0

Sweetspot

The Sweet Spot groups the original color and five complimentary colors.



E3CCCD



FFF7F8



E2CCE3



807A7B



000000



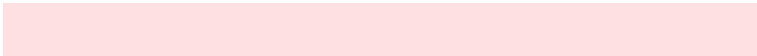
808080

Same Dimension

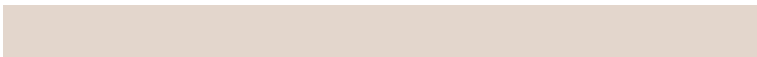
The Same Dimension uses a secret algorithm to generate beautiful new colors.



E3CCCD



FFE0E2



E3D6CC



736768



B30008



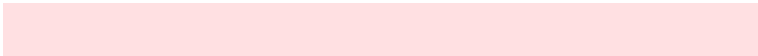
330002

Inverse Universe

The Inverse Universe completely reimagines the original color for something new.



E3CCCD



FFE0E2



CCD9E3



736768



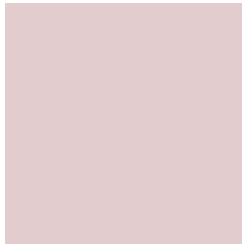
B30008



330002

Previews

White Background



This preview shows how the Hex color E3CCCD looks on a white background.

Color Contrast Check

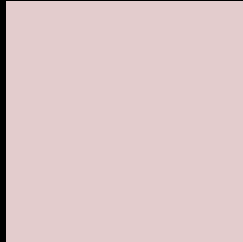
Large Text (above 18pt) WCAG AA × Fail

Any Text WCAG AA × Fail

Large Text (above 18pt) WCAG AAA × Fail

Any Text WCAG AAA × Fail

Black Background



This preview shows how the Hex color E3CCCD looks on a black background.

Color Contrast Check

Large Text (above 18pt) WCAG AA ✓ Pass

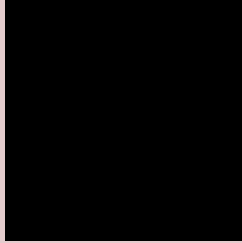
Any Text WCAG AA ✓ Pass

Large Text (above 18pt) WCAG AAA ✓ Pass

Any Text WCAG AAA ✓ Pass

If you want to check with other color combinations, try the [Color Contrast Checker](#).

Hex E3CCCD Background



This preview shows how black text looks on a background with the Hex color E3CCCD.

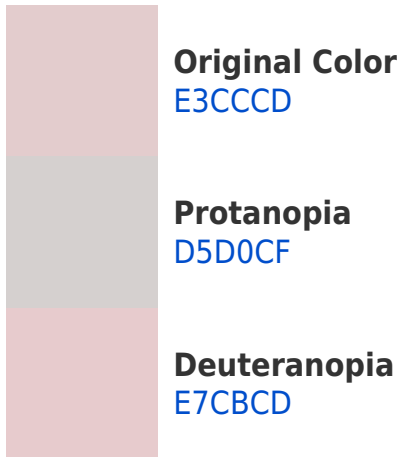


This preview shows how white text looks on a background with the Hex color E3CCCD.

Color Blindness Simulation

Color vision deficiency is a very complex topic, and I could not describe the different causes any better than Wikipedia does, so if you want to learn more, you should check out their [article about color blindness](#).

Dichromacy



Trichromacy



Original Color
E3CCCD

Protanomaly
DACFCE

Deuteranomaly
E6CBCD

Tritanomaly
E4CBD5

Monochromacy



Original Color
E3CCCD

Achromatopsia
D3D3D3

Achromatomaly
D9D0D1

CSS Examples

Text

The CSS property to change the color of the text to Hex E3CCCD is called "color". The color property can be set on classes, ids or directly on the HTML element.

This example shows how text in the color #E3CCCD looks like.

```
.text, #text, p{  
    color:#E3CCCD  
}
```

If you want to add a text shadow in that color use the text-shadow property, you can generate a text shadow directly with our [CSS Text Shadow Generator](#).

Here you see how black text with a 4 pixel #E3CCCD colored shadow looks like.

```
.shadow{ text-shadow: 4px 4px 2px #E3CCCD
}
```

Border

The CSS property to change the border of an element to Hex E3CCCD is called "border". The border property can be set on classes, ids or directly on the HTML element.

This example shows the color as border, it can be applied via the CSS property "border" or "border-color".

```
.border, #border, table{ border:4px solid
#E3CCCD }
```

If only the border color should be changed use the property `border-color`.

```
.border{ border-color:#E3CCCD }
```

If you want to add a box shadow in that color use:

Here you see how a box with a 4 pixel #E3CCCD colored shadow looks like.

```
.boxshadow{ -moz-box-shadow:4px 4px 4px  
4px #E3CCCD; -webkit-box-shadow:4px 4px  
4px 4px #E3CCCD; box-shadow:4px 4px 4px  
4px #E3CCCD }
```

Background

The CSS property to change the background color of an element to Hex E3CCCD is called "background". The background property can be set on classes, ids or directly on the HTML element.

```
.background, #background, body{  
background:#E3CCCD }
```

If only the background color should be changed can be used:

```
.background{ background-color:#E3CCCD }
```

This example shows the color as background, it is applied via the CSS property "background".

To optimize and compress your CSS code, you can use our [online CSS compressor and optimizer](#) based on csstidy. If you want to create a linear or radial gradient as background or border, check our [CSS Gradient Generator](#).

Hey! You found this booklet interesting? Support Converting Colors with the new Membership Option!

The pro membership hides all ads, plus gives you double the colors in the color bucket, and more awesome pro features!

[Learn more, Memberships starting at \\$2.50/m!](#)

**Follow me
on Twitter!**

@ConvertingColor