

Converting Colors

Hex(E3CCCE)

Have a look what the booklet for
Hex(E3CCCE) contains.

Hex(E3CCCE)	3
<i>Conversions</i>	4
<i>Details</i>	6
<i>Harmonies</i>	11
<i>Previews</i>	23
<i>Color Blindness Simulation</i>	26
<i>CSS Examples</i>	29

Color

Hex(E3CCCE)

Conversions

Conversions Part 1

Format	Color
Hex	E3CCCE
RGB	227, 204, 206
RGB Percent	89%, 80%, 81%
CMY	0.1098, 0.2000, 0.1922
CMYK	0.00, 0.10, 0.09, 0.11
HSL	355°, 29%, 85%
HSV	355°, 10%, 89%
XYZ	64.4120, 63.9729, 67.3456
YIQ	211.1050, 13.0660, 5.4980

Conversions

Conversions Part 2

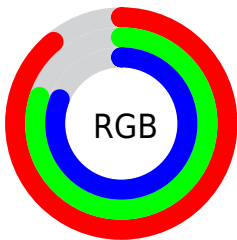
Format	Color
R _Y B	227, 204, 206
Decimal	14929102
CIE Lab	83.95, 8.36, 1.93
CIE LCh	84, 8.577, 12.980
Yxy	63.9729, 0.3291, 0.3268
Android (android.graphics.Color)	4293119182 (0xFFE3CCCE)
YUV	211.1050, -2.5168, 13.9399
Hunter-Lab	79.9830, 3.7794, 6.0660

Details

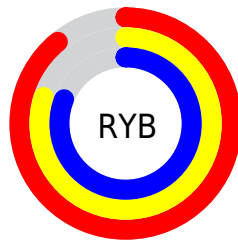
The Hex color **E3CCCE** is a light color, and the websafe version is hex **CCCCCC**. A complement of this color would be **CCE3E1**, and the grayscale version is **D3D3D3**.

A 20% lighter version of the original color is **FFFFFF**, and **AC9698** is the 20% darker color. If you saturate the color by 10%, you get **E3B5B9**, and if you desaturate by 10%, it is **E3E3E3**.

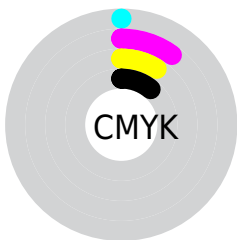
Distribution



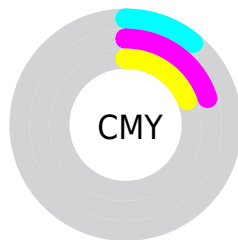
- Red (89%)
- Green (80%)
- Blue (81%)



- Red (89%)
- Yellow (80%)
- Blue (81%)



- Cyan (0%)
- Magenta (10%)
- Yellow (9%)
- Black (11%)



- Cyan (11%)
- Magenta (20%)
- Yellow (19%)

Brightness & Saturation Gradients

These gradients show how the Hex color E3CCCE changes by changing the brightness by 10 percent. The first figure shows a shift by +10% for each color and the second figure -10%.

Similar to the brightness gradients but the following saturation gradients show a change of the Hex color E3CCCE by changing the saturation by 10% instead.

 E3CCCE

 E3CCCE

FFFFFF

 C7B1B3

 AC9698

 917C7E

 776365

 5E4B4D

 463436

 301F21

 1C080A

 000000

 E3CCCE

 E3CCCE

 E3B5B9

 E3E3E3

 E39FA5

 E3F9F7

 E38890

 E3FFFF

 E3717B

 E35B66

 E34452

 E32D3D

 E31628

 E30014

Harmonies

Analogous

The Analogous color harmony consists of three colors that are next to each other on the color wheel.



DFCCD6



E3CCCE



E2CDC7

Triad

The Triadic color harmony groups three colors that are evenly spaced from another and form a triangle on the color wheel.



E3CCCE



CBD4C5



C4D3E1

Complementary

The Complementary color scheme is a pair of colors which are on the opposite of each other on the color wheel.



E3CCCE



CCE3E1

Split Complementary

Split-complementary colors differ from the complementary color scheme. The scheme consists of three colors, the original color and two neighbors of the complement color.



BFD5DC



E3CCCE



C3D6CC

Square

The Square scheme is like the rectangle color scheme, but the four colors are evenly spaced on the color wheel.



E3CCCE



D4D2C2



BED6D5



CDD1E1

Rectangle

The Rectangle color scheme consists of four colors that form a rectangle on the color wheel.



E3CCCE



DFCEC3



BED6D5



C2D4DF

Sweetspot

The Sweet Spot groups the original color and five complimentary colors.



E3CCCE



FFF7F8



E1CCE3



807A7B



000000



808080

Same Dimension

The Same Dimension uses a secret algorithm to generate beautiful new colors.



E3CCCE



FFE0E3



E3D5CC



736768



B30010



330004

Inverse Universe

The Inverse Universe completely reimagines the original color for something new.



E3CCCE



FFE0E3



CCDAE3



736768



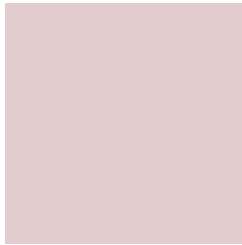
B30010



330004

Previews

White Background



This preview shows how the Hex color E3CCCE looks on a white background.

Color Contrast Check

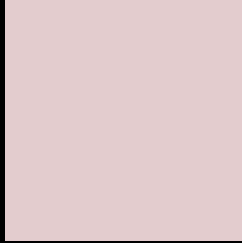
Large Text (above 18pt) WCAG AA × Fail

Any Text WCAG AA × Fail

Large Text (above 18pt) WCAG AAA × Fail

Any Text WCAG AAA × Fail

Black Background



This preview shows how the Hex color E3CCCE looks on a black background.

Color Contrast Check

Large Text (above 18pt) WCAG AA ✓ Pass

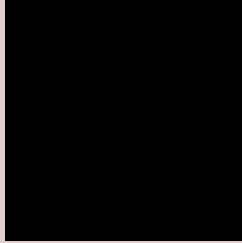
Any Text WCAG AA ✓ Pass

Large Text (above 18pt) WCAG AAA ✓ Pass

Any Text WCAG AAA ✓ Pass

If you want to check with other color combinations, try the [Color Contrast Checker](#).

Hex E3CCCE Background



This preview shows how black text looks on a background with the Hex color E3CCCE.

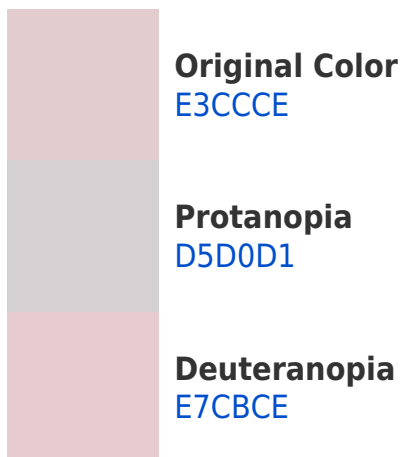


This preview shows how white text looks on a background with the Hex color E3CCCE.

Color Blindness Simulation

Color vision deficiency is a very complex topic, and I could not describe the different causes any better than Wikipedia does, so if you want to learn more, you should check out their [article about color blindness](#).

Dichromacy



Trichromacy



Original Color
E3CCCE

Protanomaly
DACFD0

Deuteranomaly
E6CBCE

Tritanomaly
E4CBD6

Monochromacy



Original Color
E3CCCE

Achromatopsia
D3D3D3

Achromatomaly
D9D0D1

CSS Examples

Text

The CSS property to change the color of the text to Hex E3CCCE is called "color". The color property can be set on classes, ids or directly on the HTML element.

This example shows how text in the color #E3CCCE looks like.

```
.text, #text, p{  
    color:#E3CCCE  
}
```

If you want to add a text shadow in that color use the text-shadow property, you can generate a text shadow directly with our [CSS Text Shadow Generator](#).

Here you see how black text with a 4 pixel #E3CCCE colored shadow looks like.

```
.shadow{ text-shadow: 4px 4px 2px #E3CCCE
}
```

Border

The CSS property to change the border of an element to Hex E3CCCE is called "border". The border property can be set on classes, ids or directly on the HTML element.

This example shows the color as border, it can be applied via the CSS property "border" or "border-color".

```
.border, #border, table{ border:4px solid
#E3CCCE }
```

If only the border color should be changed use the property `border-color`.

```
.border{ border-color:#E3CCCE }
```

If you want to add a box shadow in that color use:

Here you see how a box with a 4 pixel #E3CCCE colored shadow looks like.

```
.boxshadow{ -moz-box-shadow:4px 4px 4px  
4px #E3CCCE; -webkit-box-shadow:4px 4px  
4px 4px #E3CCCE; box-shadow:4px 4px 4px  
4px #E3CCCE }
```

Background

The CSS property to change the background color of an element to Hex E3CCCE is called "background". The background property can be set on classes, ids or directly on the HTML element.

```
.background, #background, body{  
background:#E3CCCE }
```

If only the background color should be changed can be used:

```
.background{ background-color:#E3CCCE }
```

This example shows the color as background, it is applied via the CSS property "background".

To optimize and compress your CSS code, you can use our [online CSS compressor and optimizer](#) based on csstidy. If you want to create a linear or radial gradient as background or border, check our [CSS Gradient Generator](#).

Hey! You found this booklet interesting? Support Converting Colors with the new Membership Option!

The pro membership hides all ads, plus gives you double the colors in the color bucket, and more awesome pro features!

[Learn more, Memberships starting at \\$2.50/m!](#)

**Follow me
on Twitter!**

@ConvertingColor