

# Converting Colors

Hex(E3CCD3)

Have a look what the booklet for  
Hex(E3CCD3) contains.

<b>Hex(E3CCD3)</b> .....	3
<i><b>Conversions</b></i> .....	4
<i><b>Details</b></i> .....	6
<i><b>Harmonies</b></i> .....	11
<i><b>Previews</b></i> .....	23
<i><b>Color Blindness Simulation</b></i> .....	26
<i><b>CSS Examples</b></i> .....	29

# **Color**

**Hex(E3CCD3)**

# Conversions

## Conversions Part 1

Format	Color
Hex	E3CCD3
RGB	227, 204, 211
RGB Percent	89%, 80%, 83%
CMY	0.1098, 0.2000, 0.1725
CMYK	0.00, 0.10, 0.07, 0.11
HSL	342°, 29%, 85%
HSV	342°, 10%, 89%
XYZ	65.0293, 64.2198, 70.5963
YIQ	211.6750, 11.4610, 7.0530

# Conversions

## Conversions Part 2

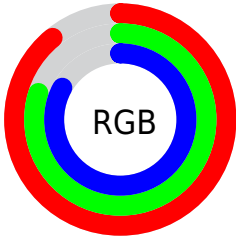
Format	Color
R <sub>Y</sub> B	227, 204, 211
Decimal	14929107
CIE Lab	84.08, 9.20, -0.55
CIE LCh	84, 9.219, 356.574
Yxy	64.2198, 0.3254, 0.3213
Android (android.graphics.Color)	4293119187 (0xFFE3CCD3)
YUV	211.6750, -0.3328, 13.4400
Hunter-Lab	80.1372, 4.6079, 3.8650

# Details

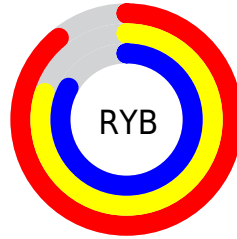
The Hex color **E3CCD3** is a light color, and the websafe version is hex **CCCCCC**. A complement of this color would be **CCE3DC**, and the grayscale version is **D4D4D4**.

A 20% lighter version of the original color is **FFFFFF**, and **AC969D** is the 20% darker color. If you saturate the color by 10%, you get **E3B5C3**, and if you desaturate by 10%, it is **E3E3E3**.

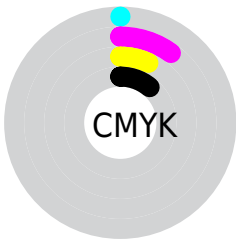
# Distribution



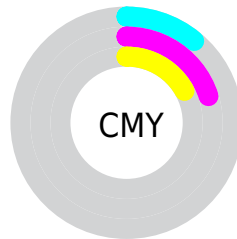
- Red (89%)
- Green (80%)
- Blue (83%)



- Red (89%)
- Yellow (80%)
- Blue (83%)



- Cyan (0%)
- Magenta (10%)
- Yellow (7%)
- Black (11%)



- Cyan (11%)
- Magenta (20%)
- Yellow (17%)

# Brightness & Saturation Gradients

These gradients show how the Hex color E3CCD3 changes by changing the brightness by 10 percent. The first figure shows a shift by +10% for each color and the second figure -10%.

Similar to the brightness gradients but the following saturation gradients show a change of the Hex color E3CCD3 by changing the saturation by 10% instead.




 E3CCD3

FFFFFF

 E3CCD3

 C7B1B7

 AC969D

 917C82

 776369

 5E4B51

 46343A

 301F25

 1C0810

 000000

 E3CCD3

 E3CCD3

 E3B5C3

 E3E3E3

 E39FB3

 E3F9F3

 E388A4

 E3FFFF

 E37194

 E35B84

 E34474

 E32D64

 E31655

 E30045

# Harmonies

## Analogous

The Analogous color harmony consists of three colors that are next to each other on the color wheel.



DCCDDB



E3CCD3



E5CCCA

# Triad

The Triadic color harmony groups three colors that are evenly spaced from another and form a triangle on the color wheel.



E3CCD3



D0D4C2



C0D5E0

# Complementary

The Complementary color scheme is a pair of colors which are on the opposite of each other on the color wheel.



E3CCD3



CCE3DC

# Split Complementary

Split-complementary colors differ from the complementary color scheme. The scheme consists of three colors, the original color and two neighbors of the complement color.



BCD7D9



E3CCD3



C7D6C8

# Square

The Square scheme is like the rectangle color scheme, but the four colors are evenly spaced on the color wheel.



E3CCD3



DAD1C0



BFD7D0



C8D3E3

# Rectangle

The Rectangle color scheme consists of four colors that form a rectangle on the color wheel.



E3CCD3



E3CDC5



BFD7D0



BED6DE



# Sweetspot

The Sweet Spot groups the original color and five complimentary colors.



E3CCD3



FFF7FA



DCCCE3



807A7C



000000



808080



# Same Dimension

The Same Dimension uses a secret algorithm to generate beautiful new colors.



E3CCD3



FFE0EA



E3D0CC



73676B



B30036



330010



# Inverse Universe

The Inverse Universe completely reimagines the original color for something new.



E3CCD3



FFE0EA



CCDFE3



73676B



B30036

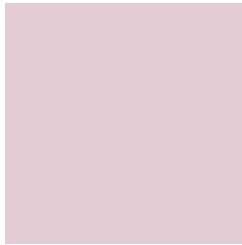


330010



# Previews

## White Background



This preview shows how the Hex color E3CCD3 looks on a white background.

## Color Contrast Check

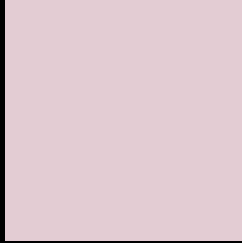
Large Text (above 18pt) WCAG AA × Fail

Any Text WCAG AA × Fail

Large Text (above 18pt) WCAG AAA × Fail

Any Text WCAG AAA × Fail

# Black Background



This preview shows how the Hex color E3CCD3 looks on a black background.

## Color Contrast Check

Large Text (above 18pt) WCAG AA ✓ Pass

Any Text WCAG AA ✓ Pass

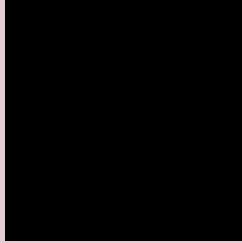
Large Text (above 18pt) WCAG AAA ✓ Pass

Any Text WCAG AAA ✓ Pass

If you want to check with other color combinations, try the [Color Contrast Checker](#).



## Hex E3CCD3 Background



This preview shows how black text looks on a background with the Hex color E3CCD3.

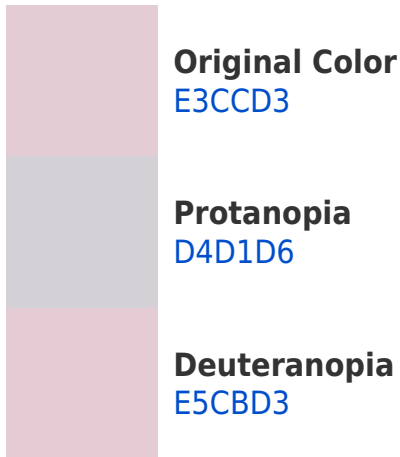


This preview shows how white text looks on a background with the Hex color E3CCD3.

# Color Blindness Simulation

Color vision deficiency is a very complex topic, and I could not describe the different causes any better than Wikipedia does, so if you want to learn more, you should check out their [article about color blindness](#).

## Dichromacy





**Tritanopia**  
E4CBDB

# Trichromacy



**Original Color**  
E3CCD3

**Protanomaly**  
D9CFD5

**Deuteranomaly**  
E4CBD3

**Tritanomaly**  
E4CBD8

# Monochromacy



**Original Color**  
E3CCD3

**Achromatopsia**  
D4D4D4

**Achromatomaly**  
D9D1D4

# CSS Examples

## Text

The CSS property to change the color of the text to Hex E3CCD3 is called "color". The color property can be set on classes, ids or directly on the HTML element.

This example shows how text in the color #E3CCD3 looks like.

```
.text, #text, p{  
    color:#E3CCD3  
}
```

If you want to add a text shadow in that color use the text-shadow property, you can generate a text shadow directly with our [CSS Text Shadow Generator](#).

Here you see how black text with a 4 pixel #E3CCD3 colored shadow looks like.

```
.shadow{ text-shadow: 4px 4px 2px #E3CCD3
}
```

## Border

The CSS property to change the border of an element to Hex E3CCD3 is called "border". The border property can be set on classes, ids or directly on the HTML element.

This example shows the color as border, it can be applied via the CSS property "border" or "border-color".

```
.border, #border, table{ border:4px solid
#E3CCD3 }
```

If only the border color should be changed use the property `border-color`.

```
.border{ border-color:#E3CCD3 }
```

If you want to add a box shadow in that color use:

Here you see how a box with a 4 pixel #E3CCD3 colored shadow looks like.

```
.boxshadow{ -moz-box-shadow:4px 4px 4px  
4px #E3CCD3; -webkit-box-shadow:4px 4px  
4px 4px #E3CCD3; box-shadow:4px 4px 4px  
4px #E3CCD3 }
```

# Background

The CSS property to change the background color of an element to Hex E3CCD3 is called "background". The background property can be set on classes, ids or directly on the HTML element.

```
.background, #background, body{  
background:#E3CCD3 }
```

If only the background color should be changed can be used:

```
.background{ background-color:#E3CCD3 }
```

This example shows the color as background, it is applied via the CSS property "background".

To optimize and compress your CSS code, you can use our [online CSS compressor and optimizer](#) based on csstidy. If you want to create a linear or radial gradient as background or border, check our [CSS Gradient Generator](#).



Hey! You found this booklet interesting? Support Converting Colors with the new Membership Option!

The pro membership hides all ads, plus gives you double the colors in the color bucket, and more awesome pro features!

**[Learn more, Memberships starting at \\$2.50/m!](#)**

**Follow me  
on Twitter!**

@ConvertingColor