

# Converting Colors

Hex(E3CDCD)

Have a look what the booklet for  
Hex(E3CDCD) contains.

<b>Hex(E3CDCD)</b> .....	3
<b><i>Conversions</i></b> .....	4
<b><i>Details</i></b> .....	6
<b><i>Harmonies</i></b> .....	11
<b><i>Previews</i></b> .....	23
<b><i>Color Blindness Simulation</i></b> .....	26
<b><i>CSS Examples</i></b> .....	29

# **Color**

**Hex(E3CDCD)**

# Conversions

## Conversions Part 1

Format	Color
Hex	E3CDCE
RGB	227, 205, 205
RGB Percent	89%, 80%, 80%
CMY	0.1098, 0.1961, 0.1961
CMYK	0.00, 0.10, 0.10, 0.11
HSL	0°, 28%, 85%
HSV	0°, 10%, 89%
XYZ	64.5293, 64.4013, 66.7872
YIQ	211.5780, 13.1120, 4.6640

# Conversions

## Conversions Part 2

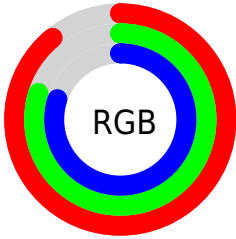
Format	Color
R <sub>Y</sub> B	227, 205, 205
Decimal	14929357
CIE Lab	84.17, 7.66, 2.78
CIE LCh	84, 8.154, 19.953
Yxy	64.4013, 0.3297, 0.3291
Android (android.graphics.Color)	4293119437 (0xFFE3CDCD)
YUV	211.5780, -3.2430, 13.5251
Hunter-Lab	80.2504, 3.0935, 6.8321

# Details

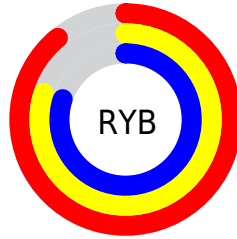
The Hex color **E3CDCD** is a light color, and the websafe version is hex **CCCCCC**. A complement of this color would be **CDE3E3**, and the grayscale version is **D4D4D4**.

A 20% lighter version of the original color is **FFFFFF**, and **AC9797** is the 20% darker color. If you saturate the color by 10%, you get **E3B6B6**, and if you desaturate by 10%, it is **E3E4E4**.

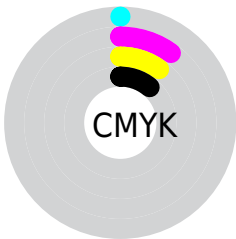
# Distribution



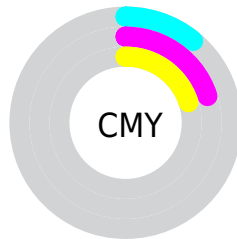
- Red (89%)
- Green (80%)
- Blue (80%)



- Red (89%)
- Yellow (80%)
- Blue (80%)



- Cyan (0%)
- Magenta (10%)
- Yellow (10%)
- Black (11%)



- Cyan (11%)
- Magenta (20%)
- Yellow (20%)

# Brightness & Saturation Gradients

These gradients show how the Hex color E3CDCD changes by changing the brightness by 10 percent. The first figure shows a shift by +10% for each color and the second figure -10%.

Similar to the brightness gradients but the following saturation gradients show a change of the Hex color E3CDCD by changing the saturation by 10% instead.



 E3CDCD

FFFFFF

 E3CDCD

 C7B2B2

 AC9797

 917D7D

 776464

 5E4C4C

 463536

 302020

 1C0909

 000000

 E3CDCD

 E3CDCD

 E3B6B6

 E3E4E4

 E3A0A0

 E3FAFA

 E38989

 E3FFFF

 E37272

 E35C5C

 E34545

 E32E2E

 E31717

 E30101

# Harmonies

## Analogous

The Analogous color harmony consists of three colors that are next to each other on the color wheel.



E0CDD5



E3CDCD



E1CEC6

# Triad

The Triadic color harmony groups three colors that are evenly spaced from another and form a triangle on the color wheel.



E3CDCD



CAD5C8



C7D3E1

# Complementary

The Complementary color scheme is a pair of colors which are on the opposite of each other on the color wheel.



E3CDCD



CDE3E3

# Split Complementary

Split-complementary colors differ from the complementary color scheme. The scheme consists of three colors, the original color and two neighbors of the complement color.



C1D5DD



E3CDCD



C3D6CF

# Square

The Square scheme is like the rectangle color scheme, but the four colors are evenly spaced on the color wheel.



E3CDCD



D3D3C4



BFD7D7



D0D1E0

# Rectangle

The Rectangle color scheme consists of four colors that form a rectangle on the color wheel.



E3CDCD



DED0C4



BFD7D7



C5D4E0

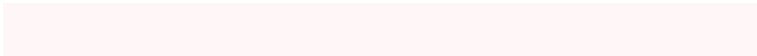


# Sweetspot

The Sweet Spot groups the original color and five complimentary colors.



E3CDCD



FFF7F7



E3CDE3



807A7A



000000



808080



# Same Dimension

The Same Dimension uses a secret algorithm to generate beautiful new colors.



E3CDCD



FFE0E0



E3D8CD



736767



B30000



330000

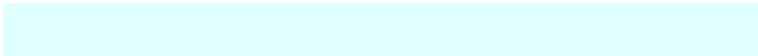


# Inverse Universe

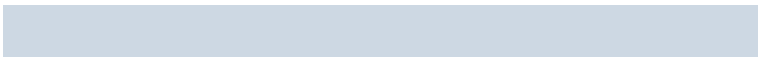
The Inverse Universe completely reimagines the original color for something new.



CDE3E3



E0FFFF



CDD8E3



677373



00B3B3

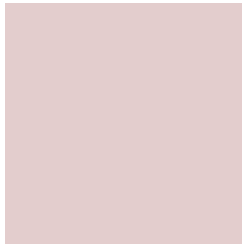


003333



# Previews

## White Background



This preview shows how the Hex color E3CDCD looks on a white background.

## Color Contrast Check

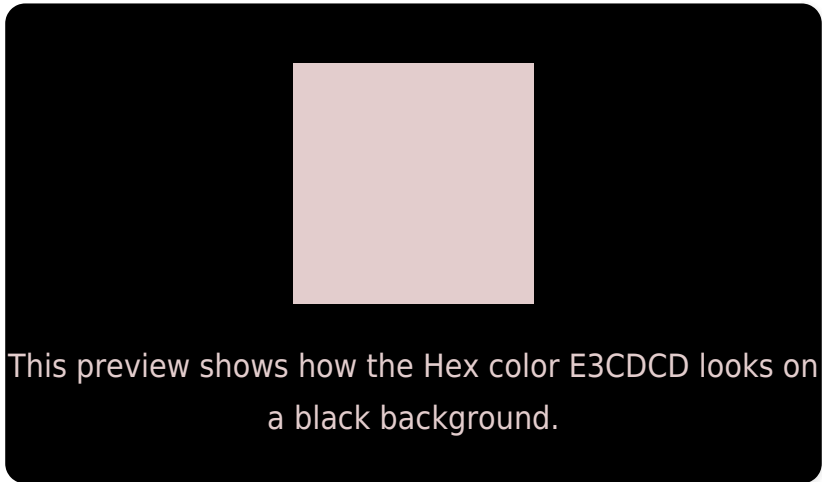
Large Text (above 18pt) WCAG AA × Fail

Any Text WCAG AA × Fail

Large Text (above 18pt) WCAG AAA × Fail

Any Text WCAG AAA × Fail

# Black Background



## Color Contrast Check

Large Text (above 18pt) WCAG AA ✓ Pass

Any Text WCAG AA ✓ Pass

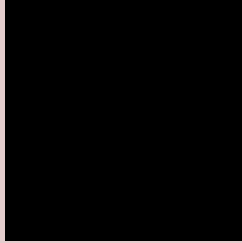
Large Text (above 18pt) WCAG AAA ✓ Pass

Any Text WCAG AAA ✓ Pass

If you want to check with other color combinations, try the [Color Contrast Checker](#).



## Hex E3CDCD Background



This preview shows how black text looks on a background with the Hex color E3CDCD.

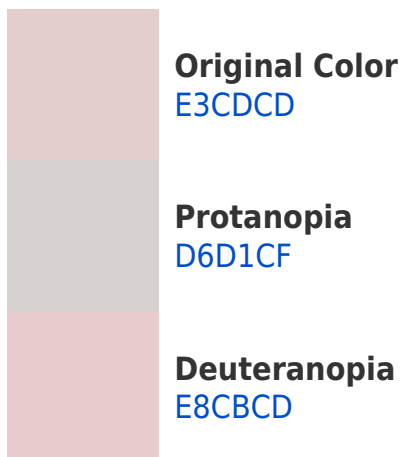


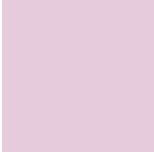
This preview shows how white text looks on a background with the Hex color E3CDCD.

# Color Blindness Simulation

Color vision deficiency is a very complex topic, and I could not describe the different causes any better than Wikipedia does, so if you want to learn more, you should check out their [article about color blindness](#).

## Dichromacy





**Tritanopia**  
E5CBDB

# Trichromacy



**Original Color**  
E3CDDC

**Protanomaly**  
DBD0CE

**Deuteranomaly**  
E6CCCD

**Tritanomaly**  
E4CCD6

# Monochromacy



**Original Color**  
E3CDDC

**Achromatopsia**  
D4D4D4

**Achromatomaly**  
D9D1D1

# CSS Examples

## Text

The CSS property to change the color of the text to Hex E3CDCD is called "color". The color property can be set on classes, ids or directly on the HTML element.

This example shows how text in the color #E3CDCD looks like.

```
.text, #text, p{  
    color:#E3CDCD  
}
```

If you want to add a text shadow in that color use the text-shadow property, you can generate a text shadow directly with our [CSS Text Shadow Generator](#).

Here you see how black text with a 4 pixel #E3CDCD colored shadow looks like.

```
.shadow{ text-shadow: 4px 4px 2px #E3CDCD
}
```

## Border

The CSS property to change the border of an element to Hex E3CDCD is called "border". The border property can be set on classes, ids or directly on the HTML element.

This example shows the color as border, it can be applied via the CSS property "border" or "border-color".

```
.border, #border, table{ border:4px solid
#E3CDCD }
```

If only the border color should be changed use the property `border-color`.

```
.border{ border-color:#E3CDCD }
```

If you want to add a box shadow in that color use:

Here you see how a box with a 4 pixel #E3CDCD colored shadow looks like.

```
.boxshadow{ -moz-box-shadow:4px 4px 4px  
4px #E3CDCD; -webkit-box-shadow:4px 4px  
4px 4px #E3CDCD; box-shadow:4px 4px 4px  
4px #E3CDCD }
```

# Background

The CSS property to change the background color of an element to Hex E3CDCD is called "background". The background property can be set on classes, ids or directly on the HTML element.

```
.background, #background, body{  
background:#E3CDCD }
```

If only the background color should be changed can be used:

```
.background{ background-color:#E3CDCD }
```

This example shows the color as background, it is applied via the CSS property "background".

To optimize and compress your CSS code, you can use our [online CSS compressor and optimizer](#) based on csstidy. If you want to create a linear or radial gradient as background or border, check our [CSS Gradient Generator](#).



Hey! You found this booklet interesting? Support Converting Colors with the new Membership Option!

The pro membership hides all ads, plus gives you double the colors in the color bucket, and more awesome pro features!

**[Learn more, Memberships starting at \\$2.50/m!](#)**

**Follow me  
on Twitter!**

@ConvertingColor