

Converting Colors

Hex(E3CECA)

Have a look what the booklet for
Hex(E3CECA) contains.

Hex(E3CECA)	3
<i>Conversions</i>	4
<i>Details</i>	6
<i>Harmonies</i>	11
<i>Previews</i>	23
<i>Color Blindness Simulation</i>	26
<i>CSS Examples</i>	29

Color

Hex(E3CECA)

Conversions

Conversions Part 1

Format	Color
Hex	E3CECA
RGB	227, 206, 202
RGB Percent	89%, 81%, 79%
CMY	0.1098, 0.1922, 0.2078
CMYK	0.00, 0.09, 0.11, 0.11
HSL	10°, 31%, 84%
HSV	10°, 11%, 89%
XYZ	64.4105, 64.7378, 64.9780
YIQ	211.8230, 13.8000, 3.2080

Conversions

Conversions Part 2

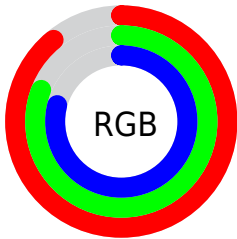
Format	Color
RYB	227, 207, 202
Decimal	14929610
CIELab	84.35, 6.64, 4.63
CIELCh	84, 8.099, 34.880
Yxy	64.7378, 0.3318, 0.3335
Android (android.graphics.Color)	4293119690 (0xFFE3CECA)
YUV	211.8230, -4.8427, 13.3102
Hunter-Lab	80.4598, 2.0901, 8.4403

Details

The Hex color **E3CECA** is a light color, and the websafe version is hex **CCCCCC**. A complement of this color would be **CADFE3**, and the grayscale version is **D4D4D4**.

A 20% lighter version of the original color is **FFFFFF**, and **AB9894** is the 20% darker color. If you saturate the color by 10%, you get **E3BBB3**, and if you desaturate by 10%, it is **E3E1E1**.

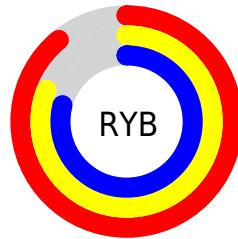
Distribution



Red (89%)

Green (81%)

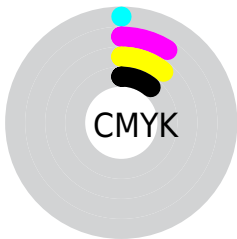
Blue (79%)



Red (89%)

Yellow (81%)

Blue (79%)

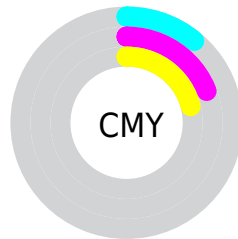


Cyan (0%)

Magenta (9%)

Yellow (11%)

Black (11%)



Cyan (11%)

Magenta (19%)

Yellow (21%)

Brightness & Saturation Gradients

These gradients show how the Hex color E3CECA changes by changing the brightness by 10 percent. The first figure shows a shift by +10% for each color and the second figure -10%.

Similar to the brightness gradients but the following saturation gradients show a change of the Hex color E3CECA by changing the saturation by 10% instead.


 E3CECA

FFFFFF

 E3CECA

 C7B3AF

 AB9894

 917E7A

 776561

 5E4D4A

 463633

 30211E

 1C0A05

 000000

 E3CECA

 E3CECA

 E3BBB3

 E3E1E1

 E3A89D

 E3F4F7

 E39586

 E3FFFF

 E3826F

 E36F59

 E35C42

 E3492B

 E33514

 E32400

Harmonies

Analogous

The Analogous color harmony consists of three colors that are next to each other on the color wheel.



E3CDD1



E3CECA



DFD0C5

Triad

The Triadic color harmony groups three colors that are evenly spaced from another and form a triangle on the color wheel.



E3CECA



C7D6CC



CCD3E1

Complementary

The Complementary color scheme is a pair of colors which are on the opposite of each other on the color wheel.



E3CECA



CADFE3

Split Complementary

Split-complementary colors differ from the complementary color scheme. The scheme consists of three colors, the original color and two neighbors of the complement color.



C4D5E0



E3CECA



C1D7D3

Square

The Square scheme is like the rectangle color scheme, but the four colors are evenly spaced on the color wheel.



E3CECA



CFD5C6



C0D7DB



D6D0DF

Rectangle

The Rectangle color scheme consists of four colors that form a rectangle on the color wheel.



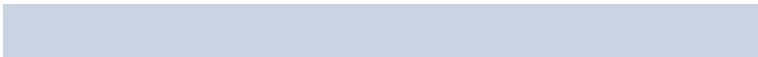
E3CECA



DAD1C3



C0D7DB



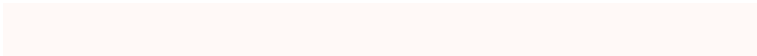
C9D3E1

Sweetspot

The Sweet Spot groups the original color and five complimentary colors.



E3CECA



FFF9F7



E3CADF



807B7A



000000



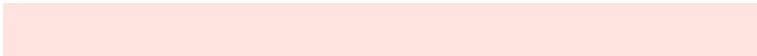
808080

Same Dimension

The Same Dimension uses a secret algorithm to generate beautiful new colors.



E3CECA



FFE3DE



E3DACA



736967



B31D00



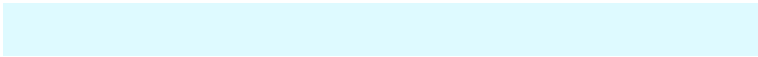
330800

Inverse Universe

The Inverse Universe completely reimagines the original color for something new.



CADFE3



DEFAFF



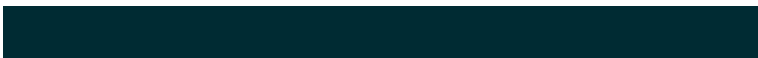
CAD3E3



677173



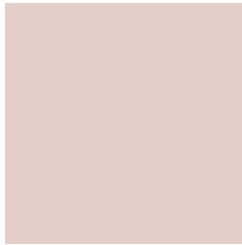
0096B3



002B33

Previews

White Background



This preview shows how the Hex color E3CECA looks on a white background.

Color Contrast Check

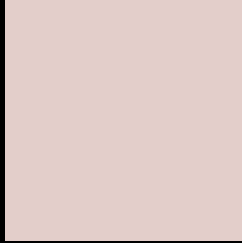
Large Text (above 18pt) WCAG AA × Fail

Any Text WCAG AA × Fail

Large Text (above 18pt) WCAG AAA × Fail

Any Text WCAG AAA × Fail

Black Background



This preview shows how the Hex color E3CECA looks on a black background.

Color Contrast Check

Large Text (above 18pt) WCAG AA ✓ Pass

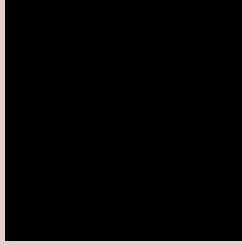
Any Text WCAG AA ✓ Pass

Large Text (above 18pt) WCAG AAA ✓ Pass

Any Text WCAG AAA ✓ Pass

If you want to check with other color combinations, try the [Color Contrast Checker](#).

Hex E3CECA Background



This preview shows how black text looks on a background with the Hex color E3CECA.



This preview shows how white text looks on a background with the Hex color E3CECA.

Color Blindness Simulation

Color vision deficiency is a very complex topic, and I could not describe the different causes any better than Wikipedia does, so if you want to learn more, you should check out their [article about color blindness](#).

Dichromacy

	Original Color E3CECA
	Protanopia D8D2CC
	Deuteranopia EACBCA



Tritanopia
E5CBDB

Trichromacy



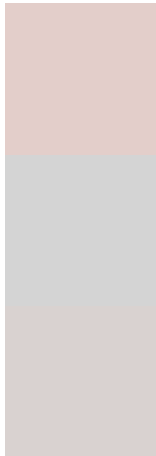
Original Color
E3CECA

Protanomaly
DCD1CB

Deuteranomaly
E7CCCA

Tritanomaly
E4CCD5

Monochromacy



Original Color
E3CECA

Achromatopsia
D4D4D4

Achromatomaly
D9D2D0

CSS Examples

Text

The CSS property to change the color of the text to Hex E3CECA is called "color". The color property can be set on classes, ids or directly on the HTML element.

This example shows how text in the color #E3CECA looks like.

```
.text, #text, p{  
    color:#E3CECA  
}
```

If you want to add a text shadow in that color use the text-shadow property, you can generate a text shadow directly with our [CSS Text Shadow Generator](#).

Here you see how black text with a 4 pixel #E3CECA colored shadow looks like.

```
.shadow{ text-shadow: 4px 4px 2px #E3CECA
}
```

Border

The CSS property to change the border of an element to Hex E3CECA is called "border". The border property can be set on classes, ids or directly on the HTML element.

This example shows the color as border, it can be applied via the CSS property "border" or "border-color".

```
.border, #border, table{ border:4px solid
#E3CECA }
```

If only the border color should be changed use the property `border-color`.

```
.border{ border-color:#E3CECA }
```

If you want to add a box shadow in that color use:

Here you see how a box with a 4 pixel #E3CECA colored shadow looks like.

```
.boxshadow{ -moz-box-shadow:4px 4px 4px  
4px #E3CECA; -webkit-box-shadow:4px 4px  
4px 4px #E3CECA; box-shadow:4px 4px 4px  
4px #E3CECA }
```

Background

The CSS property to change the background color of an element to Hex E3CECA is called "background". The background property can be set on classes, ids or directly on the HTML element.

```
.background, #background, body{  
background:#E3CECA }
```

If only the background color should be changed can be used:

```
.background{ background-color:#E3CECA }
```

This example shows the color as background, it is applied via the CSS property "background".

To optimize and compress your CSS code, you can use our [online CSS compressor and optimizer](#) based on csstidy. If you want to create a linear or radial gradient as background or border, check our [CSS Gradient Generator](#).

Hey! You found this booklet interesting? Support Converting Colors with the new Membership Option!

The pro membership hides all ads, plus gives you double the colors in the color bucket, and more awesome pro features!

[Learn more, Memberships starting at \\$2.50/m!](#)

**Follow me
on Twitter!**

@ConvertingColor