

# Converting Colors

Hex(E3D0CA)

Have a look what the booklet for  
Hex(E3D0CA) contains.

<b>Hex(E3D0CA)</b> .....	3
<i><b>Conversions</b></i> .....	4
<i><b>Details</b></i> .....	6
<i><b>Harmonies</b></i> .....	11
<i><b>Previews</b></i> .....	23
<i><b>Color Blindness Simulation</b></i> .....	26
<i><b>CSS Examples</b></i> .....	29

# **Color**

**Hex(E3D0CA)**

# Conversions

## Conversions Part 1

Format	Color
Hex	E3D0CA
RGB	227, 208, 202
RGB Percent	89%, 82%, 79%
CMY	0.1098, 0.1843, 0.2078
CMYK	0.00, 0.08, 0.11, 0.11
HSL	14°, 31%, 84%
HSV	14°, 11%, 89%
XYZ	64.8951, 65.7069, 65.1395
YIQ	212.9970, 13.2500, 2.1620

# Conversions

## Conversions Part 2

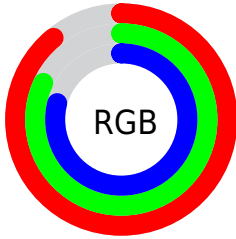
Format	Color
R <sub>Y</sub> B	227, 210, 202
Decimal	14930122
CIE Lab	84.85, 5.59, 5.35
CIE LCh	85, 7.742, 43.724
Yxy	65.7069, 0.3315, 0.3357
Android (android.graphics.Color)	4293120202 (0xFFE3D0CA)
YUV	212.9970, -5.4215, 12.2806
Hunter-Lab	81.0598, 1.0494, 9.0965

# Details

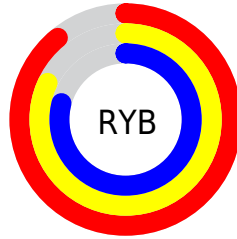
The Hex color **E3D0CA** is a light color, and the websafe version is hex **CCCCCC**. A complement of this color would be **CADDE3**, and the grayscale version is **D5D5D5**.

A 20% lighter version of the original color is **FFFFFF**, and **AC9A94** is the 20% darker color. If you saturate the color by 10%, you get **E3BFB3**, and if you desaturate by 10%, it is **E3E1E1**.

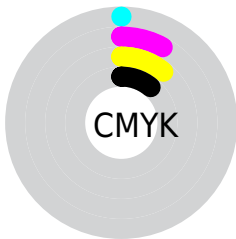
# Distribution



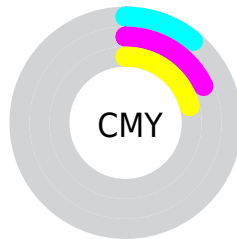
- Red (89%)
- Green (82%)
- Blue (79%)



- Red (89%)
- Yellow (82%)
- Blue (79%)



- Cyan (0%)
- Magenta (8%)
- Yellow (11%)
- Black (11%)



- Cyan (11%)
- Magenta (18%)
- Yellow (21%)

# Brightness & Saturation Gradients

These gradients show how the Hex color E3D0CA changes by changing the brightness by 10 percent. The first figure shows a shift by +10% for each color and the second figure -10%.

Similar to the brightness gradients but the following saturation gradients show a change of the Hex color E3D0CA by changing the saturation by 10% instead.



 E3D0CA

FFFFFF

 E3D0CA

 C7B4AF

 AC9A94

 91807A

 776761

 5E4F4A

 463833

 30221E

 1C0D05

 000000

 E3D0CA

 E3D0CA

 E3BFB3

 E3E1E1

 E3AD9D

 E3F3F7

 E39C86

 E3FFFF

 E38B6F

 E37A59

 E36842

 E3572B

 E34614

 E33600

# Harmonies

## Analogous

The Analogous color harmony consists of three colors that are next to each other on the color wheel.



E4CFD1



E3D0CA



DED2C6

# Triad

The Triadic color harmony groups three colors that are evenly spaced from another and form a triangle on the color wheel.



E3D0CA



C7D8CF



D1D3E2

# Complementary

The Complementary color scheme is a pair of colors which are on the opposite of each other on the color wheel.



E3D0CA



CADDE3

# Split Complementary

Split-complementary colors differ from the complementary color scheme. The scheme consists of three colors, the original color and two neighbors of the complement color.



C8D6E2



E3D0CA



C2D8D7

# Square

The Square scheme is like the rectangle color scheme, but the four colors are evenly spaced on the color wheel.



E3D0CA



CED7C9



C3D7DE



D9D1DE

# Rectangle

The Rectangle color scheme consists of four colors that form a rectangle on the color wheel.



E3D0CA



D9D4C5



C3D7DE



CED4E2



# Sweetspot

The Sweet Spot groups the original color and five complimentary colors.



E3D0CA



FFF9F7



E3CADD



807C7A



000000



808080

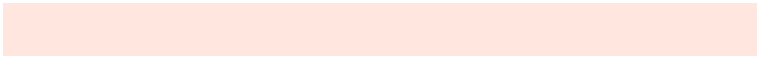


# Same Dimension

The Same Dimension uses a secret algorithm to generate beautiful new colors.



E3D0CA



FFE6DE



E3DCCA



736A67



B32B00



330C00

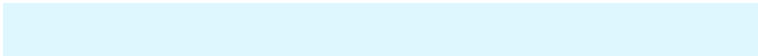


# Inverse Universe

The Inverse Universe completely reimagines the original color for something new.



CADDE3



DEF7FF



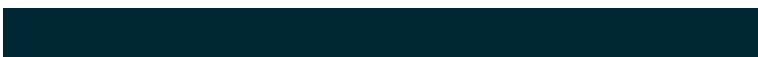
CAD1E3



677073



0088B3

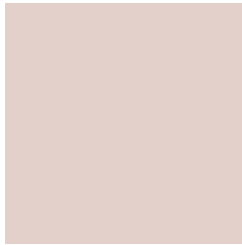


002733



# Previews

## White Background



This preview shows how the Hex color E3D0CA looks on a white background.

## Color Contrast Check

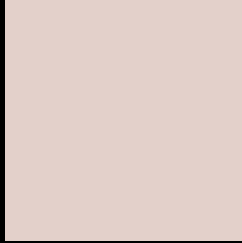
Large Text (above 18pt) WCAG AA × Fail

Any Text WCAG AA × Fail

Large Text (above 18pt) WCAG AAA × Fail

Any Text WCAG AAA × Fail

# Black Background



This preview shows how the Hex color E3D0CA looks on a black background.

## Color Contrast Check

Large Text (above 18pt) WCAG AA ✓ Pass

Any Text WCAG AA ✓ Pass

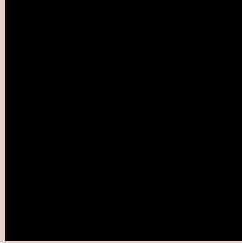
Large Text (above 18pt) WCAG AAA ✓ Pass

Any Text WCAG AAA ✓ Pass

If you want to check with other color combinations, try the [Color Contrast Checker](#).



## Hex E3D0CA Background



This preview shows how black text looks on a background with the Hex color E3D0CA.

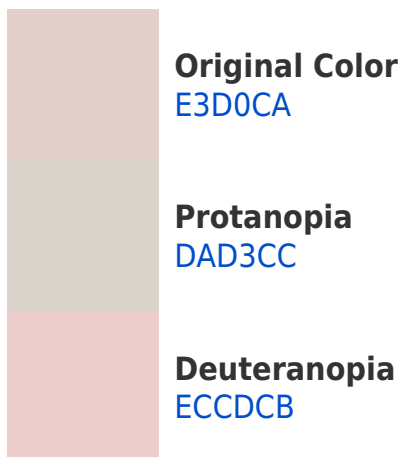


This preview shows how white text looks on a background with the Hex color E3D0CA.

# Color Blindness Simulation

Color vision deficiency is a very complex topic, and I could not describe the different causes any better than Wikipedia does, so if you want to learn more, you should check out their [article about color blindness](#).

## Dichromacy





**Tritanopia**  
E6CDDD

# Trichromacy



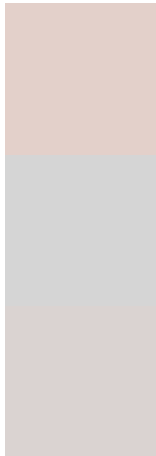
**Original Color**  
E3D0CA

**Protanomaly**  
DDD2CB

**Deuteranomaly**  
E9CECB

**Tritanomaly**  
E5CED6

# Monochromacy



**Original Color**  
E3D0CA

**Achromatopsia**  
D5D5D5

**Achromatomaly**  
DAD3D1

# CSS Examples

## Text

The CSS property to change the color of the text to Hex E3D0CA is called "color". The color property can be set on classes, ids or directly on the HTML element.

This example shows how text in the color #E3D0CA looks like.

```
.text, #text, p{  
    color:#E3D0CA  
}
```

If you want to add a text shadow in that color use the text-shadow property, you can generate a text shadow directly with our [CSS Text Shadow Generator](#).

Here you see how black text with a 4 pixel #E3D0CA colored shadow looks like.

```
.shadow{ text-shadow: 4px 4px 2px #E3D0CA
}
```

## Border

The CSS property to change the border of an element to Hex E3D0CA is called "border". The border property can be set on classes, ids or directly on the HTML element.

This example shows the color as border, it can be applied via the CSS property "border" or "border-color".

```
.border, #border, table{ border:4px solid
#E3D0CA }
```

If only the border color should be changed use the property `border-color`.

```
.border{ border-color:#E3D0CA }
```

If you want to add a box shadow in that color use:

Here you see how a box with a 4 pixel #E3D0CA colored shadow looks like.

```
.boxshadow{ -moz-box-shadow:4px 4px 4px  
4px #E3D0CA; -webkit-box-shadow:4px 4px  
4px 4px #E3D0CA; box-shadow:4px 4px 4px  
4px #E3D0CA }
```

# Background

The CSS property to change the background color of an element to Hex E3D0CA is called "background". The background property can be set on classes, ids or directly on the HTML element.

```
.background, #background, body{  
background:#E3D0CA }
```

If only the background color should be changed can be used:

```
.background{ background-color:#E3D0CA }
```

This example shows the color as background, it is applied via the CSS property "background".

To optimize and compress your CSS code, you can use our [online CSS compressor and optimizer](#) based on csstidy. If you want to create a linear or radial gradient as background or border, check our [CSS Gradient Generator](#).



Hey! You found this booklet interesting? Support Converting Colors with the new Membership Option!

The pro membership hides all ads, plus gives you double the colors in the color bucket, and more awesome pro features!

**[Learn more, Memberships starting at \\$2.50/m!](#)**

**Follow me  
on Twitter!**

@ConvertingColor