

Converting Colors

Hex(E3D0D5)

Have a look what the booklet for
Hex(E3D0D5) contains.

Hex(E3D0D5)	3
<i>Conversions</i>	4
<i>Details</i>	6
<i>Harmonies</i>	11
<i>Previews</i>	23
<i>Color Blindness Simulation</i>	26
<i>CSS Examples</i>	29

Color

Hex(E3D0D5)

Conversions

Conversions Part 1

Format	Color
Hex	E3D0D5
RGB	227, 208, 213
RGB Percent	89%, 82%, 84%
CMY	0.1098, 0.1843, 0.1647
CMYK	0.00, 0.08, 0.06, 0.11
HSL	344°, 25%, 85%
HSV	344°, 8%, 89%
XYZ	66.2447, 66.2467, 72.2462
YIQ	214.2510, 9.7190, 5.5830

Conversions

Conversions Part 2

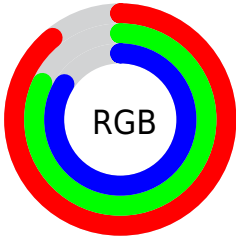
Format	Color
RYP	227, 208, 213
Decimal	14930133
CIE Lab	85.12, 7.44, -0.09
CIE LCh	85, 7.439, 359.288
Yxy	66.2467, 0.3236, 0.3236
Android (android.graphics.Color)	4293120213 (0xFFE3D0D5)
YUV	214.2510, -0.6167, 11.1809
Hunter-Lab	81.3921, 2.8442, 4.3468

Details

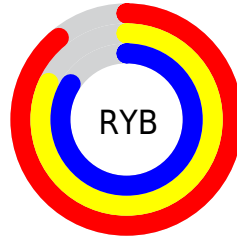
The Hex color **E3D0D5** is a light color, and the websafe version is hex **CCCCCC**. A complement of this color would be **D0E3DE**, and the grayscale version is **D6D6D6**.

A 20% lighter version of the original color is **FFFFFF**, and **AC9A9E** is the 20% darker color. If you saturate the color by 10%, you get **E3B9C4**, and if you desaturate by 10%, it is **E3E7E6**.

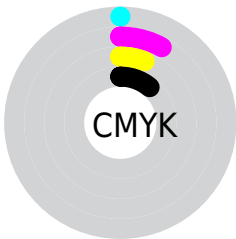
Distribution



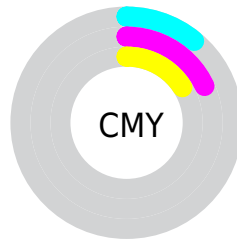
- Red (89%)
- Green (82%)
- Blue (84%)



- Red (89%)
- Yellow (82%)
- Blue (84%)



- Cyan (0%)
- Magenta (8%)
- Yellow (6%)
- Black (11%)



- Cyan (11%)
- Magenta (18%)
- Yellow (16%)

Brightness & Saturation Gradients

These gradients show how the Hex color E3D0D5 changes by changing the brightness by 10 percent. The first figure shows a shift by +10% for each color and the second figure -10%.

Similar to the brightness gradients but the following saturation gradients show a change of the Hex color E3D0D5 by changing the saturation by 10% instead.

 E3D0D5

FFFFFF

 E3D0D5

 C7B4B9

 AC9A9E

 918084

 77676B

 5E4F53

 47383C

 302226

 1C0D12

 000000

 E3D0D5

 E3D0D5

 E3B9C4

 E3E7E6

 E3A3B4

 E3FDF6

 E38CA3

 E3FFFF

 E37592

 E35F81

 E34871

 E33160

 E31A4F

 E3043E

Harmonies

Analogous

The Analogous color harmony consists of three colors that are next to each other on the color wheel.



DED1DC



E3D0D5



E4D0CE

Triad

The Triadic color harmony groups three colors that are evenly spaced from another and form a triangle on the color wheel.



E3D0D5



D3D6C8



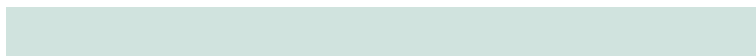
C7D7E0

Complementary

The Complementary color scheme is a pair of colors which are on the opposite of each other on the color wheel.



E3D0D5



D0E3DE

Split Complementary

Split-complementary colors differ from the complementary color scheme. The scheme consists of three colors, the original color and two neighbors of the complement color.



C4D9DB



E3D0D5



CBD8CD

Square

The Square scheme is like the rectangle color scheme, but the four colors are evenly spaced on the color wheel.



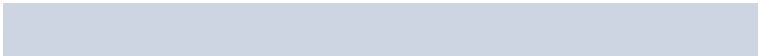
E3D0D5



DBD4C7



C5D9D4



CDD5E2

Rectangle

The Rectangle color scheme consists of four colors that form a rectangle on the color wheel.



E3D0D5



E3D1CA



C5D9D4



C5D8DF

Sweetspot

The Sweet Spot groups the original color and five complimentary colors.



E3D0D5



FFF7F9



DED0E3



807A7C



000000



808080

Same Dimension

The Same Dimension uses a secret algorithm to generate beautiful new colors.



E3D0D5



FFE6EC



E3D4D0



73676A



B3002F



33000D

Inverse Universe

The Inverse Universe completely reimagines the original color for something new.



E3D0D5



FFE6EC



D0DFE3



73676A



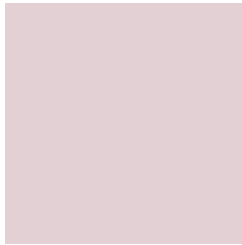
B3002F



33000D

Previews

White Background



This preview shows how the Hex color E3D0D5 looks on a white background.

Color Contrast Check

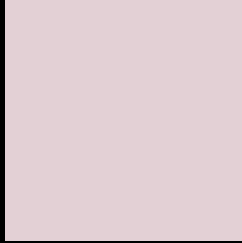
Large Text (above 18pt) WCAG AA × Fail

Any Text WCAG AA × Fail

Large Text (above 18pt) WCAG AAA × Fail

Any Text WCAG AAA × Fail

Black Background



This preview shows how the Hex color E3D0D5 looks on a black background.

Color Contrast Check

Large Text (above 18pt) WCAG AA ✓ Pass

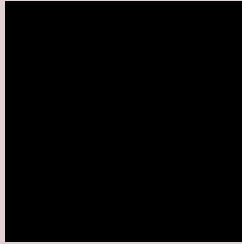
Any Text WCAG AA ✓ Pass

Large Text (above 18pt) WCAG AAA ✓ Pass

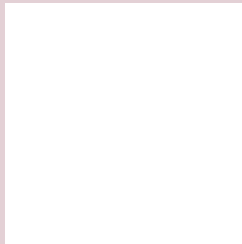
Any Text WCAG AAA ✓ Pass

If you want to check with other color combinations, try the [Color Contrast Checker](#).

Hex E3D0D5 Background



This preview shows how black text looks on a background with the Hex color E3D0D5.

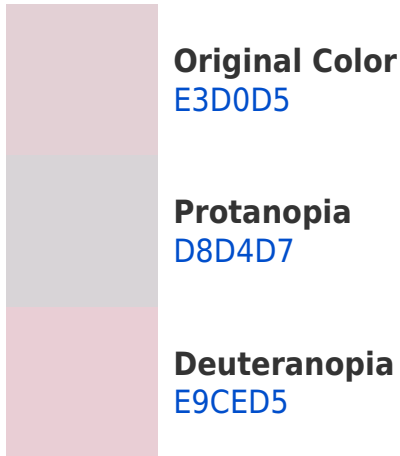


This preview shows how white text looks on a background with the Hex color E3D0D5.

Color Blindness Simulation

Color vision deficiency is a very complex topic, and I could not describe the different causes any better than Wikipedia does, so if you want to learn more, you should check out their [article about color blindness](#).

Dichromacy





Tritanopia
E4CEDF

Trichromacy



Original Color
E3D0D5

Protanomaly
DCD3D6

Deuteranomaly
E7CFD5

Tritanomaly
E4CFDB

Monochromacy



Original Color
E3D0D5

Achromatopsia
D6D6D6

Achromatomaly
DBD4D6

CSS Examples

Text

The CSS property to change the color of the text to Hex E3D0D5 is called "color". The color property can be set on classes, ids or directly on the HTML element.

This example shows how text in the color #E3D0D5 looks like.

```
.text, #text, p{  
    color:#E3D0D5  
}
```

If you want to add a text shadow in that color use the text-shadow property, you can generate a text shadow directly with our [CSS Text Shadow Generator](#).

Here you see how black text with a 4 pixel #E3D0D5 colored shadow looks like.

```
.shadow{ text-shadow: 4px 4px 2px #E3D0D5
}
```

Border

The CSS property to change the border of an element to Hex E3D0D5 is called "border". The border property can be set on classes, ids or directly on the HTML element.

This example shows the color as border, it can be applied via the CSS property "border" or "border-color".

```
.border, #border, table{ border:4px solid
#E3D0D5 }
```

If only the border color should be changed use the property `border-color`.

```
.border{ border-color:#E3D0D5 }
```

If you want to add a box shadow in that color use:

Here you see how a box with a 4 pixel #E3D0D5 colored shadow looks like.

```
.boxshadow{ -moz-box-shadow:4px 4px 4px  
4px #E3D0D5; -webkit-box-shadow:4px 4px  
4px 4px #E3D0D5; box-shadow:4px 4px 4px  
4px #E3D0D5 }
```

Background

The CSS property to change the background color of an element to Hex E3D0D5 is called "background". The background property can be set on classes, ids or directly on the HTML element.

```
.background, #background, body{  
background:#E3D0D5 }
```

If only the background color should be changed can be used:

```
.background{ background-color:#E3D0D5 }
```

This example shows the color as background, it is applied via the CSS property "background".

To optimize and compress your CSS code, you can use our [online CSS compressor and optimizer](#) based on csstidy. If you want to create a linear or radial gradient as background or border, check our [CSS Gradient Generator](#).

Hey! You found this booklet interesting? Support Converting Colors with the new Membership Option!

The pro membership hides all ads, plus gives you double the colors in the color bucket, and more awesome pro features!

[Learn more, Memberships starting at \\$2.50/m!](#)

**Follow me
on Twitter!**

@ConvertingColor