

# Converting Colors

Hex(E42F69)

Have a look what the booklet for  
Hex(E42F69) contains.

<b>Hex(E42F69)</b> .....	3
<b><i>Conversions</i></b> .....	4
<b><i>Details</i></b> .....	6
<b><i>Harmonies</i></b> .....	11
<b><i>Previews</i></b> .....	23
<b><i>Color Blindness Simulation</i></b> .....	26
<b><i>CSS Examples</i></b> .....	29

# Color

Hex(E42F69)

# Conversions

## Conversions Part 1

<b>Format</b>	<b>Color</b>
Hex	E42F69
RGB	228, 47, 105
RGB Percent	89%, 18%, 41%
CMY	0.1059, 0.8157, 0.5882
CMYK	0.00, 0.79, 0.54, 0.11
HSL	341°, 77%, 54%
HSV	341°, 79%, 89%
XYZ	35.5612, 19.5469, 15.2633
YIQ	107.7310, 89.2580, 56.4100

# Conversions

## Conversions Part 2

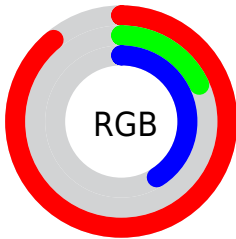
<b>Format</b>	<b>Color</b>
<b>R<sub>Y</sub>B</b>	228, 47, 105
Decimal	14954345
CIE <sub>Lab</sub>	51.32, 70.11, 12.18
CIE <sub>LCh</sub>	51, 71.160, 9.852
Yxy	19.5469, 0.5053, 0.2778
Android (android.graphics.Color)	4293144425 (0xFFE42F69)
YUV	107.7310, -1.3464, 105.4759
Hunter-Lab	44.2119, 66.2031, 10.4797

# Details

The Hex color **E42F69** is a dark color, and the websafe version is hex **CC3366**. The color can be described as dark washed rose. A complement of this color would be **2FE4AA**, and the grayscale version is **6C6C6C**.

A 20% lighter version of the original color is **FF6F9C**, and **A6003A** is the 20% darker color. If you saturate the color by 10%, you get **E4185A**, and if you desaturate by 10%, it is **E44678**.

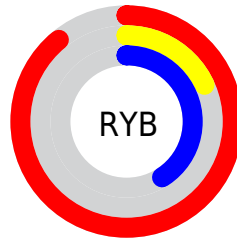
# Distribution



Red (89%)

Green (18%)

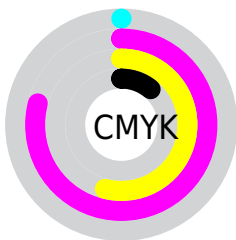
Blue (41%)



Red (89%)

Yellow (18%)

Blue (41%)

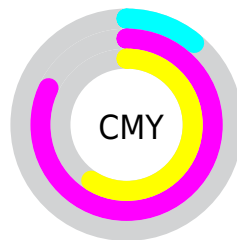


Cyan (0%)

Magenta (79%)

Yellow (54%)

Black (11%)



Cyan (11%)

Magenta (82%)

Yellow (59%)

# Brightness & Saturation Gradients

These gradients show how the Hex color E42F69 changes by changing the brightness by 10 percent. The first figure shows a shift by +10% for each color and the second figure -10%.

Similar to the brightness gradients but the following saturation gradients show a change of the Hex color E42F69 by changing the saturation by 10% instead.



 E42F69

 E42F69

FFFFFF

 C50051

 FF6F9C

 A6003A

 FF8DB7

 870025

 FFAAD2

 690011

 FFC7EE

 4C0003

 FFE5FF

 2D0001

 000000

 E42F69

 E42F69

 E4185A

 E44678

 E4014A

 E45D88

 E40049

 E47397

 E48AA7

 E4A1B6

 E4B8C6

 E4CFD5

 E4E5E5

 E4FCF4

# Harmonies

## Analogous

The Analogous color harmony consists of three colors that are next to each other on the color wheel.



D03DA6



E42F69



D8492E

# Triad

The Triadic color harmony groups three colors that are evenly spaced from another and form a triangle on the color wheel.



E42F69



3B8B00



008CED

# Complementary

The Complementary color scheme is a pair of colors which are on the opposite of each other on the color wheel.



E42F69



2FE4AA

# Split Complementary

Split-complementary colors differ from the complementary color scheme. The scheme consists of three colors, the original color and two neighbors of the complement color.



0094C7



E42F69



00924E

# Square

The Square scheme is like the rectangle color scheme, but the four colors are evenly spaced on the color wheel.



E42F69



827E00



00958D



007BF3

# Rectangle

The Rectangle color scheme consists of four colors that form a rectangle on the color wheel.



E42F69



C25E00



00958D



0090E4



# Sweetspot

The Sweet Spot groups the original color and five complimentary colors.



E42F69



FFC2D5



A82FE4



805B66



000000



808080



# Same Dimension

The Same Dimension uses a secret algorithm to generate beautiful new colors.



E42F69



FF0D5A



E44D2F



73676B



B30039



330010



# Inverse Universe

The Inverse Universe completely reimagines the original color for something new.



E42F69



FF0D5A



2FC6E4



73676B



B30039

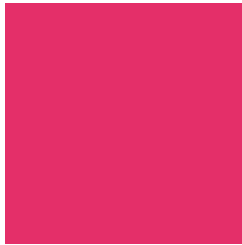


330010



# Previews

## White Background



This preview shows how the Hex color E42F69 looks on a white background.

## Color Contrast Check

Large Text (above 18pt) WCAG AA ✓ Pass

Any Text WCAG AA × Fail

Large Text (above 18pt) WCAG AAA × Fail

Any Text WCAG AAA × Fail

# Black Background



## Color Contrast Check

Large Text (above 18pt) WCAG AA ✓ Pass

Any Text WCAG AA ✓ Pass

Large Text (above 18pt) WCAG AAA ✓ Pass

Any Text WCAG AAA × Fail

If you want to check with other color combinations, try the [Color Contrast Checker](#).



## Hex E42F69 Background



This preview shows how black text looks on a background with the Hex color E42F69.

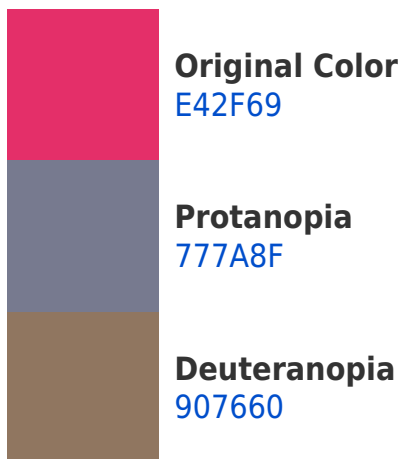


This preview shows how white text looks on a background with the Hex color E42F69.

# Color Blindness Simulation

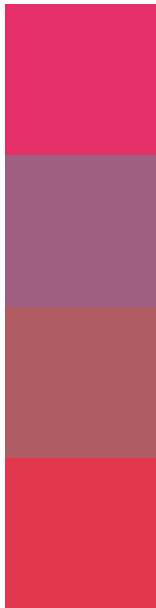
Color vision deficiency is a very complex topic, and I could not describe the different causes any better than Wikipedia does, so if you want to learn more, you should check out their [article about color blindness](#).

## Dichromacy





# Trichromacy



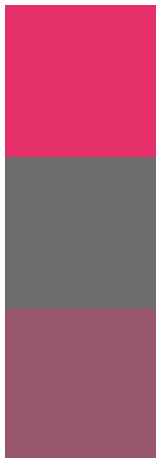
**Original Color**  
E42F69

**Protanomaly**  
9F5F81

**Deuteranomaly**  
AF5C63

**Tritanomaly**  
E3374D

# Monochromacy



**Original Color**  
E42F69

**Achromatopsia**  
6C6C6C

**Achromatomaly**  
98566B

# CSS Examples

## Text

The CSS property to change the color of the text to Hex E42F69 is called "color". The color property can be set on classes, ids or directly on the HTML element.

This example shows how text in the color #E42F69 looks like.

```
.text, #text, p{  
  color:#E42F69  
}
```

If you want to add a text shadow in that color use the text-shadow property, you can generate a text shadow directly with our [CSS Text Shadow Generator](#).

Here you see how black text with a 4 pixel #E42F69 colored shadow looks like.

```
.shadow{ text-shadow: 4px 4px 2px #E42F69
}
```

## Border

The CSS property to change the border of an element to Hex E42F69 is called "border". The border property can be set on classes, ids or directly on the HTML element.

This example shows the color as border, it can be applied via the CSS property "border" or "border-color".

```
.border, #border, table{ border:4px solid
#E42F69 }
```

If only the border color should be changed use the property `border-color`.

```
.border{ border-color:#E42F69 }
```

If you want to add a box shadow in that color use:

Here you see how a box with a 4 pixel #E42F69 colored shadow looks like.

```
.boxshadow{ -moz-box-shadow:4px 4px 4px  
4px #E42F69; -webkit-box-shadow:4px 4px  
4px 4px #E42F69; box-shadow:4px 4px 4px  
4px #E42F69 }
```

# Background

The CSS property to change the background color of an element to Hex E42F69 is called "background". The background property can be set on classes, ids or directly on the HTML element.

```
.background, #background, body{  
background:#E42F69 }
```

If only the background color should be changed can be used:

```
.background{ background-color:#E42F69 }
```

This example shows the color as background, it is applied via the CSS property "background".

To optimize and compress your CSS code, you can use our [online CSS compressor and optimizer](#) based on csstidy. If you want to create a linear or radial gradient as background or border, check our [CSS Gradient Generator](#).



Hey! You found this booklet interesting? Support Converting Colors with the new Membership Option!

The pro membership hides all ads, plus gives you double the colors in the color bucket, and more awesome pro features!

**[Learn more, Memberships starting at \\$2.50/m!](#)**

**Follow me  
on Twitter!**

**@ConvertingColor**