

Converting Colors

Hex(E43978)

Have a look what the booklet for
Hex(E43978) contains.

Hex(E43978)	3
<i>Conversions</i>	4
<i>Details</i>	6
<i>Harmonies</i>	11
<i>Previews</i>	23
<i>Color Blindness Simulation</i>	26
<i>CSS Examples</i>	29

Color

Hex(E43978)

Conversions

Conversions Part 1

Format	Color
Hex	E43978
RGB	228, 57, 120
RGB Percent	89%, 22%, 47%
CMY	0.1059, 0.7765, 0.5294
CMYK	0.00, 0.75, 0.47, 0.11
HSL	338°, 76%, 56%
HSV	338°, 75%, 89%
XYZ	36.8482, 20.7763, 19.8374
YIQ	115.3110, 81.6930, 55.8450

Conversions

Conversions Part 2

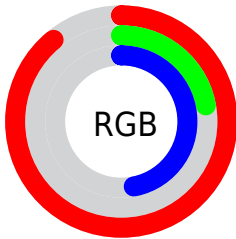
Format	Color
R_{YB}	228, 57, 120
Decimal	14956920
CIE _{Lab}	52.70, 68.45, 5.07
CIE _{LCh}	53, 68.633, 4.240
Yxy	20.7763, 0.4757, 0.2682
Android (android.graphics.Color)	4293147000 (0xFFE43978)
YUV	115.3110, 2.3117, 98.8283
Hunter-Lab	45.5810, 64.5345, 6.1030

Details

The Hex color **E43978** is a dark color, and the websafe version is hex **CC3366**. The color can be described as middle washed rose. A complement of this color would be **39E4A5**, and the grayscale version is **737373**.

A 20% lighter version of the original color is **FF76AC**, and **A70048** is the 20% darker color. If you saturate the color by 10%, you get **E4226A**, and if you desaturate by 10%, it is **E45086**.

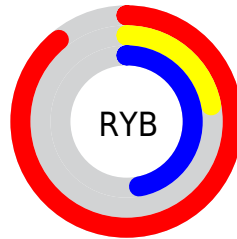
Distribution



Red (89%)

Green (22%)

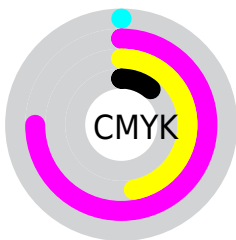
Blue (47%)



Red (89%)

Yellow (22%)

Blue (47%)

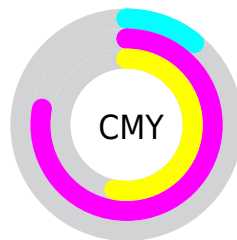


Cyan (0%)

Magenta (75%)

Yellow (47%)

Black (11%)



Cyan (11%)

Magenta (78%)

Yellow (53%)

Brightness & Saturation Gradients

These gradients show how the Hex color E43978 changes by changing the brightness by 10 percent. The first figure shows a shift by +10% for each color and the second figure -10%.

Similar to the brightness gradients but the following saturation gradients show a change of the Hex color E43978 by changing the saturation by 10% instead.

 E43978

 E43978

FFFFFF

 C50B5F

 FF76AC

 A70048

 FF93C7

 880032

 FFB1E3

 6B001D

 FFCEFF

 4E0003

 FFECFF

 300002

 000000

 E43978

 E43978

 E4226A

 E45086

 E40B5B

 E46795

 E40054

 E47DA3

 E494B2

 E4ABC0

 E4C2CE

 E4D9DD

 E4EFEB

 E4FFFA

Harmonies

Analogous

The Analogous color harmony consists of three colors that are next to each other on the color wheel.



CA4BB2



E43978



DE4A3F

Triad

The Triadic color harmony groups three colors that are evenly spaced from another and form a triangle on the color wheel.



E43978



538D00



0091E8

Complementary

The Complementary color scheme is a pair of colors which are on the opposite of each other on the color wheel.



E43978



39E4A5

Split Complementary

Split-complementary colors differ from the complementary color scheme. The scheme consists of three colors, the original color and two neighbors of the complement color.



0097BF



E43978



009547

Square

The Square scheme is like the rectangle color scheme, but the four colors are evenly spaced on the color wheel.



E43978



907E00



009885



0083F4

Rectangle

The Rectangle color scheme consists of four colors that form a rectangle on the color wheel.



E43978



CC5E18



009885



0094DD

Sweetspot

The Sweet Spot groups the original color and five complimentary colors.



E43978



FFC4DA



A239E4



805C69



000000



808080

Same Dimension

The Same Dimension uses a secret algorithm to generate beautiful new colors.



E43978



FF196E



E44D39



73676C



B30042



330013

Inverse Universe

The Inverse Universe completely reimagines the original color for something new.



E43978



FF196E



39D0E4



73676C



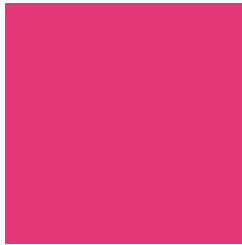
B30042



330013

Previews

White Background



This preview shows how the Hex color E43978 looks on a white background.

Color Contrast Check

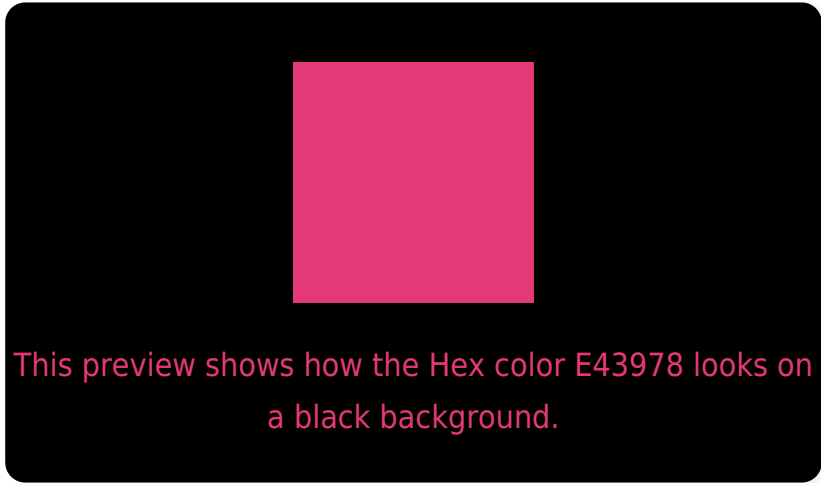
Large Text (above 18pt) WCAG AA ✓ Pass

Any Text WCAG AA × Fail

Large Text (above 18pt) WCAG AAA × Fail

Any Text WCAG AAA × Fail

Black Background



Color Contrast Check

Large Text (above 18pt) WCAG AA ✓ Pass

Any Text WCAG AA ✓ Pass

Large Text (above 18pt) WCAG AAA ✓ Pass

Any Text WCAG AAA × Fail

If you want to check with other color combinations, try the [Color Contrast Checker](#).

Hex E43978 Background



This preview shows how black text looks on a background with the Hex color E43978.




This preview shows how white text looks on a background with the Hex color E43978.

Color Blindness Simulation

Color vision deficiency is a very complex topic, and I could not describe the different causes any better than Wikipedia does, so if you want to learn more, you should check out their [article about color blindness](#).

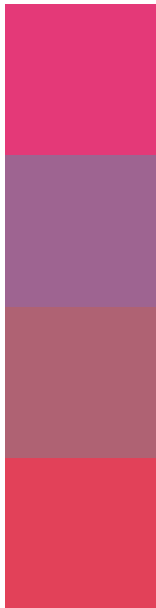
Dichromacy





Tritanopia
E14548

Trichromacy



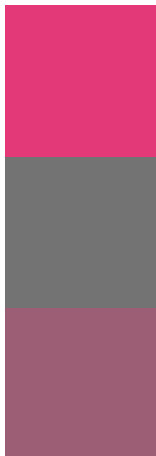
Original Color
E43978

Protanomaly
9E6491

Deuteranomaly
AF6273

Tritanomaly
E24159

Monochromacy



Original Color
E43978

Achromatopsia
737373

Achromatomaly
9C5E75

CSS Examples

Text

The CSS property to change the color of the text to Hex E43978 is called "color". The color property can be set on classes, ids or directly on the HTML element.

This example shows how text in the color #E43978 looks like.

```
.text, #text, p{  
    color:#E43978  
}
```

If you want to add a text shadow in that color use the text-shadow property, you can generate a text shadow directly with our [CSS Text Shadow Generator](#).

Here you see how black text with a 4 pixel #E43978 colored shadow looks like.

```
.shadow{ text-shadow: 4px 4px 2px #E43978
}
```

Border

The CSS property to change the border of an element to Hex E43978 is called "border". The border property can be set on classes, ids or directly on the HTML element.

This example shows the color as border, it can be applied via the CSS property "border" or "border-color".

```
.border, #border, table{ border:4px solid
#E43978 }
```

If only the border color should be changed use the property `border-color`.

```
.border{ border-color:#E43978 }
```

If you want to add a box shadow in that color use:

Here you see how a box with a 4 pixel #E43978 colored shadow looks like.

```
.boxshadow{ -moz-box-shadow:4px 4px 4px  
4px #E43978; -webkit-box-shadow:4px 4px  
4px 4px #E43978; box-shadow:4px 4px 4px  
4px #E43978 }
```

Background

The CSS property to change the background color of an element to Hex E43978 is called "background". The background property can be set on classes, ids or directly on the HTML element.

```
.background, #background, body{  
background:#E43978 }
```

If only the background color should be changed can be used:

```
.background{ background-color:#E43978 }
```

This example shows the color as background, it is applied via the CSS property "background".

To optimize and compress your CSS code, you can use our [online CSS compressor and optimizer](#) based on csstidy. If you want to create a linear or radial gradient as background or border, check our [CSS Gradient Generator](#).

Hey! You found this booklet interesting? Support Converting Colors with the new Membership Option!

The pro membership hides all ads, plus gives you double the colors in the color bucket, and more awesome pro features!

[Learn more, Memberships starting at \\$2.50/m!](#)

**Follow me
on Twitter!**

@ConvertingColor