

# Converting Colors

Hex(E44988)

Have a look what the booklet for  
Hex(E44988) contains.

<b>Hex(E44988)</b> .....	3
<i><b>Conversions</b></i> .....	4
<i><b>Details</b></i> .....	6
<i><b>Harmonies</b></i> .....	11
<i><b>Previews</b></i> .....	23
<i><b>Color Blindness Simulation</b></i> .....	26
<i><b>CSS Examples</b></i> .....	29

**Color**

**Hex(E44988)**

# Conversions

## Conversions Part 1

<b>Format</b>	<b>Color</b>
Hex	E44988
RGB	228, 73, 136
RGB Percent	89%, 29%, 53%
CMY	0.1059, 0.7137, 0.4667
CMYK	0.00, 0.68, 0.40, 0.11
HSL	336°, 74%, 59%
HSV	336°, 68%, 89%
XYZ	38.8214, 23.0366, 25.6930
YIQ	126.5270, 72.1570, 52.4530

# Conversions

## Conversions Part 2

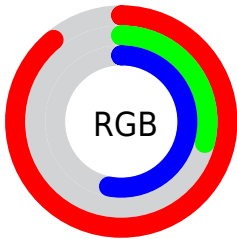
<b>Format</b>	<b>Color</b>
<b>R<sub>YB</sub></b>	228, 73, 136
Decimal	14961032
CIE <sub>Lab</sub>	55.11, 64.47, -0.99
CIE <sub>LCh</sub>	55, 64.476, 359.124
Yxy	23.0366, 0.4434, 0.2631
Android (android.graphics.Color)	4293151112 (0xFFE44988)
YUV	126.5270, 4.6702, 88.9918
Hunter-Lab	47.9965, 60.3837, 1.8591

# Details

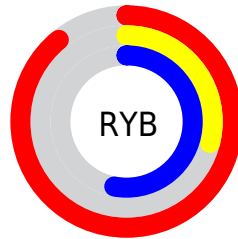
The Hex color **E44988** is a dark color, and the websafe version is hex **FF6699**. The color can be described as middle muted rose. A complement of this color would be **49E4A5**, and the grayscale version is **7E7E7E**.

A 20% lighter version of the original color is **FF83BD**, and **A80056** is the 20% darker color. If you saturate the color by 10%, you get **E4327A**, and if you desaturate by 10%, it is **E46096**.

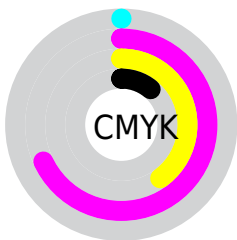
# Distribution



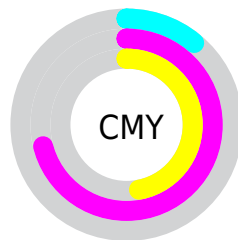
- Red (89%)
- Green (29%)
- Blue (53%)



- Red (89%)
- Yellow (29%)
- Blue (53%)



- Cyan (0%)
- Magenta (68%)
- Yellow (40%)
- Black (11%)



- Cyan (11%)
- Magenta (71%)
- Yellow (47%)

# Brightness & Saturation Gradients

These gradients show how the Hex color E44988 changes by changing the brightness by 10 percent. The first figure shows a shift by +10% for each color and the second figure -10%.

Similar to the brightness gradients but the following saturation gradients show a change of the Hex color E44988 by changing the saturation by 10% instead.



 E44988

 E44988

FFFFFF

 C6286F

 FF83BD

 A80056

 FFA0D9

 8A003F

 FFBDF5

 6D002A

 FFDAFF

 500015

 FFF8FF

 340002

 010000

 000000

 E44988

 E44988

 E4327A

 E46096

 E41B6D

 E477A3

 E4055F

 E48DB1

 E4005D

 E4A4BE

 E4BBCC

 E4D2D9

 E4E9E7

 E4FFF4

 E4FFFF

# Harmonies

## Analogous

The Analogous color harmony consists of three colors that are next to each other on the color wheel.



C55BBE



E44988



E35251

# Triad

The Triadic color harmony groups three colors that are evenly spaced from another and form a triangle on the color wheel.



E44988



68900C



0098E4

# Complementary

The Complementary color scheme is a pair of colors which are on the opposite of each other on the color wheel.



E44988



49E4A5

# Split Complementary

Split-complementary colors differ from the complementary color scheme. The scheme consists of three colors, the original color and two neighbors of the complement color.



009DB9



E44988



009947

# Square

The Square scheme is like the rectangle color scheme, but the four colors are evenly spaced on the color wheel.



E44988



9F8100



009D81



008BF4

# Rectangle

The Rectangle color scheme consists of four colors that form a rectangle on the color wheel.



E44988



D5622F



009D81



009AD8



# Sweetspot

The Sweet Spot groups the original color and five complimentary colors.



E44988



FFCCE1



A349E4



80616D



000000



808080



# Same Dimension

The Same Dimension uses a secret algorithm to generate beautiful new colors.



E44988



FF2E83



E45649



73676C



B30049



330015



# Inverse Universe

The Inverse Universe completely reimagines the original color for something new.



E44988



FF2E83



49D7E4



73676C



B30049



330015



# Previews

## White Background



This preview shows how the Hex color E44988 looks on a white background.

## Color Contrast Check

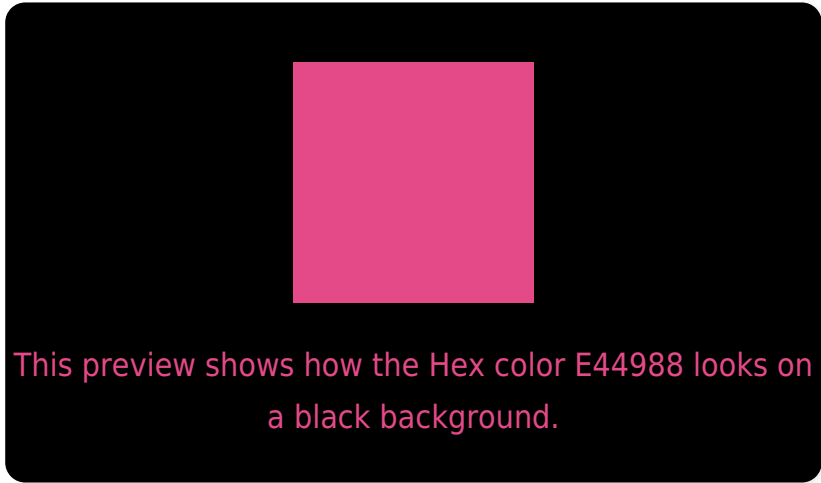
Large Text (above 18pt) WCAG AA ✓ Pass

Any Text WCAG AA × Fail

Large Text (above 18pt) WCAG AAA × Fail

Any Text WCAG AAA × Fail

# Black Background



## Color Contrast Check

Large Text (above 18pt) WCAG AA ✓ Pass

Any Text WCAG AA ✓ Pass

Large Text (above 18pt) WCAG AAA ✓ Pass

Any Text WCAG AAA × Fail

If you want to check with other color combinations, try the [Color Contrast Checker](#).



## Hex E44988 Background



This preview shows how black text looks on a background with the Hex color E44988.

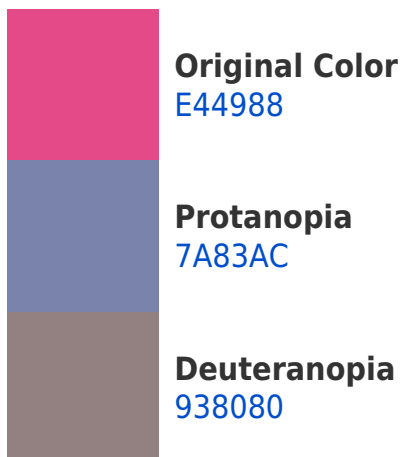


This preview shows how white text looks on a background with the Hex color E44988.

# Color Blindness Simulation

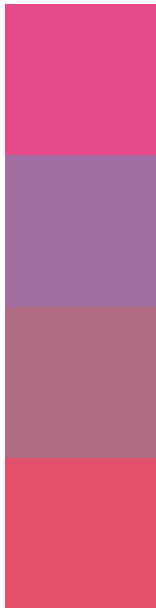
Color vision deficiency is a very complex topic, and I could not describe the different causes any better than Wikipedia does, so if you want to learn more, you should check out their [article about color blindness](#).

## Dichromacy





# Trichromacy



**Original Color**  
E44988

**Protanomaly**  
A16E9F

**Deuteranomaly**  
B06C83

**Tritanomaly**  
E2506A

# Monochromacy



**Original Color**  
E44988

**Achromatopsia**  
7F7F7F

**Achromatomaly**  
A46B82

# CSS Examples

## Text

The CSS property to change the color of the text to Hex E44988 is called "color". The color property can be set on classes, ids or directly on the HTML element.

This example shows how text in the color #E44988 looks like.

```
.text, #text, p{  
    color:#E44988  
}
```

If you want to add a text shadow in that color use the text-shadow property, you can generate a text shadow directly with our [CSS Text Shadow Generator](#).

Here you see how black text with a 4 pixel #E44988 colored shadow looks like.

```
.shadow{ text-shadow: 4px 4px 2px #E44988
}
```

## Border

The CSS property to change the border of an element to Hex E44988 is called "border". The border property can be set on classes, ids or directly on the HTML element.

This example shows the color as border, it can be applied via the CSS property "border" or "border-color".

```
.border, #border, table{ border:4px solid
#E44988 }
```

If only the border color should be changed use the property `border-color`.

```
.border{ border-color:#E44988 }
```

If you want to add a box shadow in that color use:

Here you see how a box with a 4 pixel #E44988 colored shadow looks like.

```
.boxshadow{ -moz-box-shadow:4px 4px 4px  
4px #E44988; -webkit-box-shadow:4px 4px  
4px 4px #E44988; box-shadow:4px 4px 4px  
4px #E44988 }
```

# Background

The CSS property to change the background color of an element to Hex E44988 is called "background". The background property can be set on classes, ids or directly on the HTML element.

```
.background, #background, body{  
background:#E44988 }
```

If only the background color should be changed can be used:

```
.background{ background-color:#E44988 }
```

This example shows the color as background, it is applied via the CSS property "background".

To optimize and compress your CSS code, you can use our [online CSS compressor and optimizer](#) based on csstidy. If you want to create a linear or radial gradient as background or border, check our [CSS Gradient Generator](#).



Hey! You found this booklet interesting? Support Converting Colors with the new Membership Option!

The pro membership hides all ads, plus gives you double the colors in the color bucket, and more awesome pro features!

**[Learn more, Memberships starting at \\$2.50/m!](#)**

**Follow me  
on Twitter!**

@ConvertingColor