

# Converting Colors

Hex(E485D7)

Have a look what the booklet for  
Hex(E485D7) contains.

<b>Hex(E485D7)</b> .....	3
<i><b>Conversions</b></i> .....	4
<i><b>Details</b></i> .....	6
<i><b>Harmonies</b></i> .....	11
<i><b>Previews</b></i> .....	23
<i><b>Color Blindness Simulation</b></i> .....	26
<i><b>CSS Examples</b></i> .....	29

# **Color**

**Hex(E485D7)**

# Conversions

## Conversions Part 1

Format	Color
Hex	E485D7
RGB	228, 133, 215
RGB Percent	89%, 52%, 84%
CMY	0.1059, 0.4784, 0.1569
CMYK	0.00, 0.42, 0.06, 0.11
HSL	308°, 64%, 71%
HSV	308°, 42%, 89%
XYZ	52.6482, 38.1753, 68.8837
YIQ	170.7530, 30.2980, 45.6420

# Conversions

## Conversions Part 2

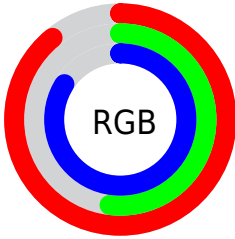
Format	Color
R <sub>Y</sub> B	228, 133, 215
Decimal	14976471
CIE Lab	68.15, 47.92, -26.61
CIE LCh	68, 54.808, 330.959
Yxy	38.1753, 0.3297, 0.2390
Android (android.graphics.Color)	4293166551 (0xFFE485D7)
YUV	170.7530, 21.8138, 50.2056
Hunter-Lab	61.7862, 43.9745, -22.8504

# Details

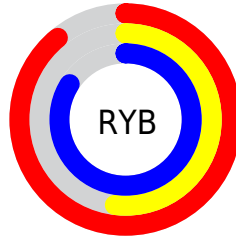
The Hex color **E485D7** is a light color, and the websafe version is hex **FF99FF**. A complement of this color would be **85E492**, and the grayscale version is **ABABAB**.

A 20% lighter version of the original color is **FFBCFF**, and **AB50A0** is the 20% darker color. If you saturate the color by 10%, you get **E46ED4**, and if you desaturate by 10%, it is **E49CDA**.

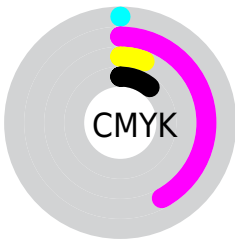
# Distribution



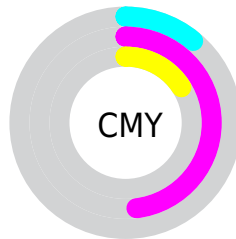
- Red (89%)
- Green (52%)
- Blue (84%)



- Red (89%)
- Yellow (52%)
- Blue (84%)



- Cyan (0%)
- Magenta (42%)
- Yellow (6%)
- Black (11%)



- Cyan (11%)
- Magenta (48%)
- Yellow (16%)

# Brightness & Saturation Gradients

These gradients show how the Hex color E485D7 changes by changing the brightness by 10 percent. The first figure shows a shift by +10% for each color and the second figure -10%.

Similar to the brightness gradients but the following saturation gradients show a change of the Hex color E485D7 by changing the saturation by 10% instead.



 E485D7

 E485D7

FFFFFF

 C76ABB

 FFBCFF

 AB50A0

 FFD9FF

 8F3686

 FFF6FF

 74196C

 5A0054

 40003C

 2A0026

 00010E

 000000

 E485D7

 E485D7

 E46ED4

 E49CDA

 E457D1

 E4B3DD

 E441CE

 E4C9E0

 E42ACB

 E4E0E3

 E413C7

 E4F7E7

 E400C5

 E4FFEA

 E4FFED

 E4FFF0

 E4FFF3

# Harmonies

## Analogous

The Analogous color harmony consists of three colors that are next to each other on the color wheel.



AA98FB



E485D7



FF7BA7

# Triad

The Triadic color harmony groups three colors that are evenly spaced from another and form a triangle on the color wheel.



E485D7



C0A43E



00BED8

# Complementary

The Complementary color scheme is a pair of colors which are on the opposite of each other on the color wheel.



E485D7



85E492

# Split Complementary

Split-complementary colors differ from the complementary color scheme. The scheme consists of three colors, the original color and two neighbors of the complement color.



00BFA6



E485D7



8EB24D

# Square

The Square scheme is like the rectangle color scheme, but the four colors are evenly spaced on the color wheel.



E485D7



E8924F



4ABB74



00B8FC

# Rectangle

The Rectangle color scheme consists of four colors that form a rectangle on the color wheel.



E485D7



FF7D85



4ABB74



00BFC8



# Sweetspot

The Sweet Spot groups the original color and five complimentary colors.



E485D7



FFDEFA



9285E4



806B7D



000000



808080



# Same Dimension

The Same Dimension uses a secret algorithm to generate beautiful new colors.



E485D7



FF80EE



E485A8



736771



B3009A



33002C



# Inverse Universe

The Inverse Universe completely reimagines the original color for something new.



E485D7



FF80EE



85E4C1



736771



B3009A



33002C



# Previews

## White Background



This preview shows how the Hex color E485D7 looks on a white background.

## Color Contrast Check

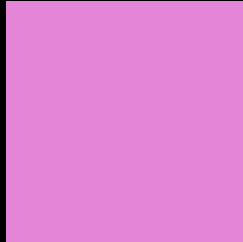
Large Text (above 18pt) WCAG AA × Fail

Any Text WCAG AA × Fail

Large Text (above 18pt) WCAG AAA × Fail

Any Text WCAG AAA × Fail

# Black Background



This preview shows how the Hex color E485D7 looks on a black background.

## Color Contrast Check

Large Text (above 18pt) WCAG AA ✓ Pass

Any Text WCAG AA ✓ Pass

Large Text (above 18pt) WCAG AAA ✓ Pass

Any Text WCAG AAA ✓ Pass

If you want to check with other color combinations, try the [Color Contrast Checker](#).



## Hex E485D7 Background



This preview shows how black text looks on a background with the Hex color E485D7.

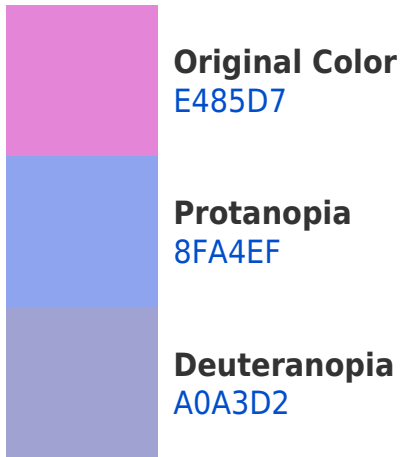



This preview shows how white text looks on a background with the Hex color E485D7.

# Color Blindness Simulation

Color vision deficiency is a very complex topic, and I could not describe the different causes any better than Wikipedia does, so if you want to learn more, you should check out their [article about color blindness](#).

## Dichromacy





**Tritanopia**  
DD919C

# Trichromacy



**Original Color**  
E485D7



**Protanomaly**  
AE99E6



**Deuteranomaly**  
B998D4

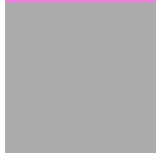


**Tritanomaly**  
E08DB1

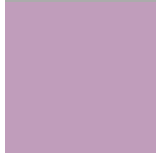
# Monochromacy



**Original Color**  
E485D7



**Achromatopsia**  
ABABAB



**Achromatomaly**  
C09DBB

# CSS Examples

## Text

The CSS property to change the color of the text to Hex E485D7 is called "color". The color property can be set on classes, ids or directly on the HTML element.

This example shows how text in the color #E485D7 looks like.

```
.text, #text, p{  
    color:#E485D7  
}
```

If you want to add a text shadow in that color use the text-shadow property, you can generate a text shadow directly with our [CSS Text Shadow Generator](#).

Here you see how black text with a 4 pixel #E485D7 colored shadow looks like.

```
.shadow{ text-shadow: 4px 4px 2px #E485D7
}
```

## Border

The CSS property to change the border of an element to Hex E485D7 is called "border". The border property can be set on classes, ids or directly on the HTML element.

This example shows the color as border, it can be applied via the CSS property "border" or "border-color".

```
.border, #border, table{ border:4px solid
#E485D7 }
```

If only the border color should be changed use the property `border-color`.

```
.border{ border-color:#E485D7 }
```

If you want to add a box shadow in that color use:

Here you see how a box with a 4 pixel #E485D7 colored shadow looks like.

```
.boxshadow{ -moz-box-shadow:4px 4px 4px  
4px #E485D7; -webkit-box-shadow:4px 4px  
4px 4px #E485D7; box-shadow:4px 4px 4px  
4px #E485D7 }
```

# Background

The CSS property to change the background color of an element to Hex E485D7 is called "background". The background property can be set on classes, ids or directly on the HTML element.

```
.background, #background, body{  
background:#E485D7 }
```

If only the background color should be changed can be used:

```
.background{ background-color:#E485D7 }
```

This example shows the color as background, it is applied via the CSS property "background".

To optimize and compress your CSS code, you can use our [online CSS compressor and optimizer](#) based on csstidy. If you want to create a linear or radial gradient as background or border, check our [CSS Gradient Generator](#).



Hey! You found this booklet interesting? Support Converting Colors with the new Membership Option!

The pro membership hides all ads, plus gives you double the colors in the color bucket, and more awesome pro features!

**[Learn more, Memberships starting at \\$2.50/m!](#)**

**Follow me  
on Twitter!**

@ConvertingColor