

Converting Colors

Hex(E493A1)

Have a look what the booklet for
Hex(E493A1) contains.

Hex(E493A1)	3
<i>Conversions</i>	4
<i>Details</i>	6
<i>Harmonies</i>	11
<i>Previews</i>	23
<i>Color Blindness Simulation</i>	26
<i>CSS Examples</i>	29

Color

Hex(E493A1)

Conversions

Conversions Part 1

Format	Color
Hex	E493A1
RGB	228, 147, 161
RGB Percent	89%, 58%, 63%
CMY	0.1059, 0.4235, 0.3686
CMYK	0.00, 0.36, 0.29, 0.11
HSL	350°, 60%, 74%
HSV	350°, 36%, 89%
XYZ	48.8616, 39.9346, 38.8511
YIQ	172.8150, 43.7820, 21.5260

Conversions

Conversions Part 2

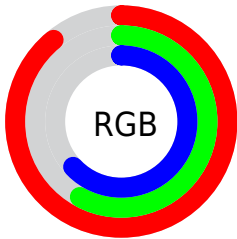
Format	Color
R _Y B	228, 147, 161
Decimal	14980001
CIE Lab	69.42, 32.34, 5.43
CIE LCh	69, 32.790, 9.525
Yxy	39.9346, 0.3828, 0.3129
Android (android.graphics.Color)	4293170081 (0xFFE493A1)
YUV	172.8150, -5.8248, 48.3972
Hunter-Lab	63.1938, 27.4274, 7.7847

Details

The Hex color **E493A1** is a light color, and the websafe version is hex **FF9999**. A complement of this color would be **93E4D6**, and the grayscale version is **ADADAD**.

A 20% lighter version of the original color is **FFCAD8**, and **AB5F6E** is the 20% darker color. If you saturate the color by 10%, you get **E47C8E**, and if you desaturate by 10%, it is **E4AAB4**.

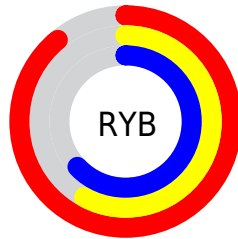
Distribution



Red (89%)

Green (58%)

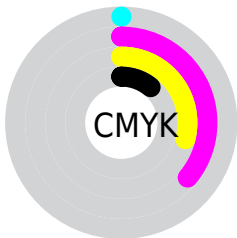
Blue (63%)



Red (89%)

Yellow (58%)

Blue (63%)

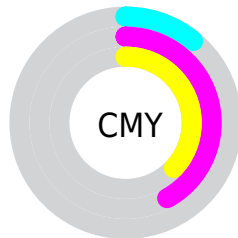


Cyan (0%)

Magenta (36%)

Yellow (29%)

Black (11%)



Cyan (11%)

Magenta (42%)

Yellow (37%)

Brightness & Saturation Gradients

These gradients show how the Hex color E493A1 changes by changing the brightness by 10 percent. The first figure shows a shift by +10% for each color and the second figure -10%.

Similar to the brightness gradients but the following saturation gradients show a change of the Hex color E493A1 by changing the saturation by 10% instead.

 E493A1

 E493A1

FFFFFF

 C77987

 FFCAD8

 AB5F6E

 FFE6F4

 8F4655

 742E3E

 591528

 3F0014

 2A0001

 000000

 E493A1

 E493A1

 E47C8E

 E4AAB4

 E4657B

 E4C1C7

 E44F68

 E4D7DA

 E43856

 E4EEEC

 E42143

 E4FFFF

 E40A30

 E40027

Harmonies

Analogous

The Analogous color harmony consists of three colors that are next to each other on the color wheel.



D796BF



E493A1



E19785

Triad

The Triadic color harmony groups three colors that are evenly spaced from another and form a triangle on the color wheel.



E493A1



94B37B



62B2E0

Complementary

The Complementary color scheme is a pair of colors which are on the opposite of each other on the color wheel.



E493A1



93E4D6

Split Complementary

Split-complementary colors differ from the complementary color scheme. The scheme consists of three colors, the original color and two neighbors of the complement color.



44B8CE



E493A1



70B894

Square

The Square scheme is like the rectangle color scheme, but the four colors are evenly spaced on the color wheel.



E493A1



B5AB6E



4FBAB2



90A9E4

Rectangle

The Rectangle color scheme consists of four colors that form a rectangle on the color wheel.



E493A1



D79D77



4FBAB2



55B5DC

Sweetspot

The Sweet Spot groups the original color and five complimentary colors.



E493A1



FFE3E8



D593E4



806F72



000000



808080

Same Dimension

The Same Dimension uses a secret algorithm to generate beautiful new colors.



E493A1



FF91A4



E4AD93



736769



B3001F



330009

Inverse Universe

The Inverse Universe completely reimagines the original color for something new.



E493A1



FF91A4



93CAE4



736769



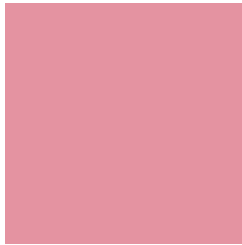
B3001F



330009

Previews

White Background



This preview shows how the Hex color E493A1 looks on a white background.

Color Contrast Check

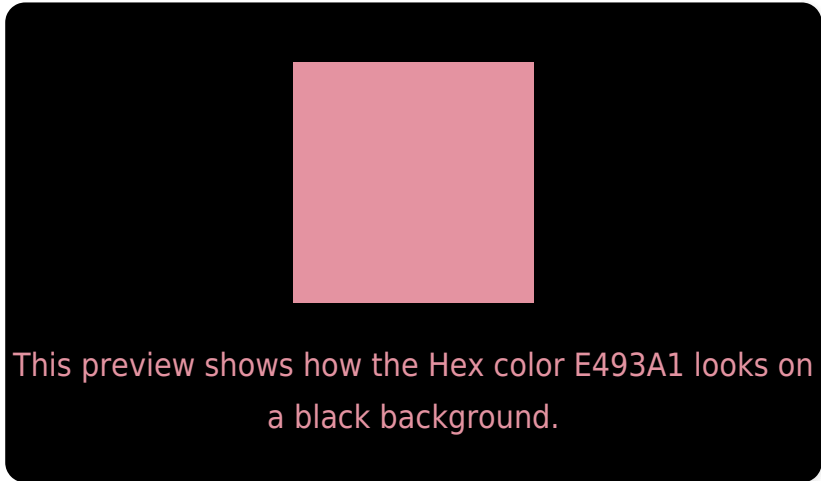
Large Text (above 18pt) WCAG AA × Fail

Any Text WCAG AA × Fail

Large Text (above 18pt) WCAG AAA × Fail

Any Text WCAG AAA × Fail

Black Background



Color Contrast Check

Large Text (above 18pt) WCAG AA ✓ Pass

Any Text WCAG AA ✓ Pass

Large Text (above 18pt) WCAG AAA ✓ Pass

Any Text WCAG AAA ✓ Pass

If you want to check with other color combinations, try the [Color Contrast Checker](#).

Hex E493A1 Background



This preview shows how black text looks on a background with the Hex color E493A1.



This preview shows how white text looks on a background with the Hex color E493A1.

Color Blindness Simulation

Color vision deficiency is a very complex topic, and I could not describe the different causes any better than Wikipedia does, so if you want to learn more, you should check out their [article about color blindness](#).


Dichromacy



Original Color
E493A1

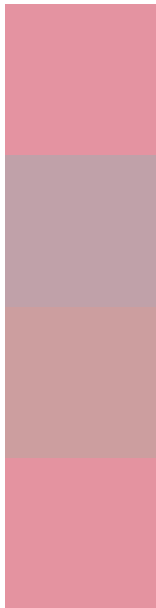
Protanopia
ACA9AD

Deuteranopia
BFA49E



Tritanopia
E4939F

Trichromacy



Original Color
E493A1

Protanomaly
C0A1A9

Deuteranomaly
CC9E9F

Tritanomaly
E493A0

Monochromacy



Original Color
E493A1

Achromatopsia
ADADAD

Achromatomaly
C1A4A9

CSS Examples

Text

The CSS property to change the color of the text to Hex E493A1 is called "color". The color property can be set on classes, ids or directly on the HTML element.

This example shows how text in the color #E493A1 looks like.

```
.text, #text, p{  
    color:#E493A1  
}
```

If you want to add a text shadow in that color use the text-shadow property, you can generate a text shadow directly with our [CSS Text Shadow Generator](#).

Here you see how black text with a 4 pixel #E493A1 colored shadow looks like.

```
.shadow{ text-shadow: 4px 4px 2px #E493A1
}
```

Border

The CSS property to change the border of an element to Hex E493A1 is called "border". The border property can be set on classes, ids or directly on the HTML element.

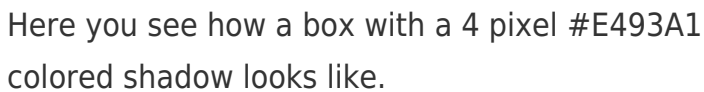
This example shows the color as border, it can be applied via the CSS property "border" or "border-color".

```
.border, #border, table{ border:4px solid
#E493A1 }
```

If only the border color should be changed use the property `border-color`.

```
.border{ border-color:#E493A1 }
```

If you want to add a box shadow in that color use:



Here you see how a box with a 4 pixel #E493A1 colored shadow looks like.

```
.boxshadow{ -moz-box-shadow:4px 4px 4px  
4px #E493A1; -webkit-box-shadow:4px 4px  
4px 4px #E493A1; box-shadow:4px 4px 4px  
4px #E493A1 }
```

Background

The CSS property to change the background color of an element to Hex E493A1 is called "background". The background property can be set on classes, ids or directly on the HTML element.

```
.background, #background, body{  
background:#E493A1 }
```

If only the background color should be changed can be used:

```
.background{ background-color:#E493A1 }
```

This example shows the color as background, it is applied via the CSS property "background".

To optimize and compress your CSS code, you can use our [online CSS compressor and optimizer](#) based on csstidy. If you want to create a linear or radial gradient as background or border, check our [CSS Gradient Generator](#).

Hey! You found this booklet interesting? Support Converting Colors with the new Membership Option!

The pro membership hides all ads, plus gives you double the colors in the color bucket, and more awesome pro features!

[Learn more, Memberships starting at \\$2.50/m!](#)

**Follow me
on Twitter!**

@ConvertingColor