

# Converting Colors

Hex(E49FAD)

Have a look what the booklet for  
Hex(E49FAD) contains.

<b>Hex(E49FAD)</b> .....	3
<i><b>Conversions</b></i> .....	4
<i><b>Details</b></i> .....	6
<i><b>Harmonies</b></i> .....	11
<i><b>Previews</b></i> .....	23
<i><b>Color Blindness Simulation</b></i> .....	26
<i><b>CSS Examples</b></i> .....	29

# **Color**

**Hex(E49FAD)**

# Conversions

## Conversions Part 1

Format	Color
Hex	E49FAD
RGB	228, 159, 173
RGB Percent	89%, 62%, 68%
CMY	0.1059, 0.3765, 0.3216
CMYK	0.00, 0.30, 0.24, 0.11
HSL	348°, 56%, 76%
HSV	348°, 30%, 89%
XYZ	51.9359, 44.3074, 45.3500
YIQ	181.2270, 36.6300, 18.9820

# Conversions

## Conversions Part 2

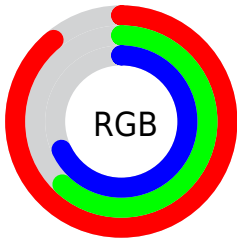
Format	Color
<a href="#">RYB</a>	<a href="#">228, 159, 173</a>
Decimal	<a href="#">14983085</a>
CIELab	<a href="#">72.43, 27.59, 3.11</a>
CIELCh	<a href="#">72, 27.767, 6.433</a>
Yxy	<a href="#">44.3074, 0.3668, 0.3129</a>
Android (android.graphics.Color)	<a href="#">4293173165</a> ( <a href="#">0xFFE49FAD</a> )
YUV	<a href="#">181.2270, -4.0559, 41.0199</a>
Hunter-Lab	<a href="#">66.5638, 22.7866, 6.2003</a>

# Details

The Hex color **E49FAD** is a light color, and the websafe version is hex **CC9999**. A complement of this color would be **9FE4D6**, and the grayscale version is **B5B5B5**.

A 20% lighter version of the original color is **FFD6E4**, and **AB6B79** is the 20% darker color. If you saturate the color by 10%, you get **E4889B**, and if you desaturate by 10%, it is **E4B6BF**.

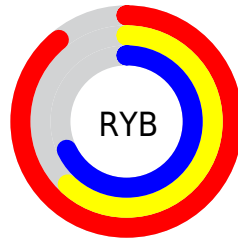
# Distribution



Red (89%)

Green (62%)

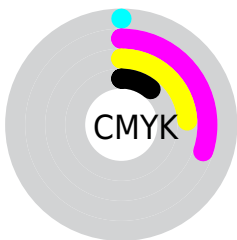
Blue (68%)



Red (89%)

Yellow (62%)

Blue (68%)

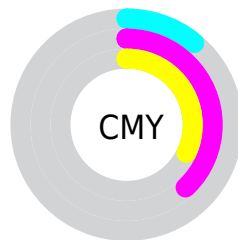


Cyan (0%)

Magenta (30%)

Yellow (24%)

Black (11%)



Cyan (11%)

Magenta (38%)

Yellow (32%)

# Brightness & Saturation Gradients

These gradients show how the Hex color E49FAD changes by changing the brightness by 10 percent. The first figure shows a shift by +10% for each color and the second figure -10%.

Similar to the brightness gradients but the following saturation gradients show a change of the Hex color E49FAD by changing the saturation by 10% instead.



 E49FAD

 E49FAD

FFFFFF

 C78592

 FFD6E4

 AB6B79

 FFF3FF

 905260

 753A48

 5B2332

 420B1D

 2C0003

 000000

 E49FAD

 E49FAD

 E4889B

 E4B6BF

 E47189

 E4CDD1

 E45B76

 E4E3E4

 E44464

 E4FAF6

 E42D52

 E4FFFF

 E41640

 E4002E

# Harmonies

## Analogous

The Analogous color harmony consists of three colors that are next to each other on the color wheel.



D7A2C6



E49FAD



E3A295

# Triad

The Triadic color harmony groups three colors that are evenly spaced from another and form a triangle on the color wheel.



E49FAD



A3B988



77BADF

# Complementary

The Complementary color scheme is a pair of colors which are on the opposite of each other on the color wheel.



E49FAD



9FE4D6

# Split Complementary

Split-complementary colors differ from the complementary color scheme. The scheme consists of three colors, the original color and two neighbors of the complement color.



65BECF



E49FAD



85BE9D

# Square

The Square scheme is like the rectangle color scheme, but the four colors are evenly spaced on the color wheel.



E49FAD



BFB27F



6DC0B6



9AB2E4

# Rectangle

The Rectangle color scheme consists of four colors that form a rectangle on the color wheel.



E49FAD



DBA788



6DC0B6



6FBCDB



# Sweetspot

The Sweet Spot groups the original color and five complimentary colors.



E49FAD



FFE8ED



D59FE4



807174



000000



808080



# Same Dimension

The Same Dimension uses a secret algorithm to generate beautiful new colors.



E49FAD



FFA3B6



E4B39F



73676A



B30024



33000A



# Inverse Universe

The Inverse Universe completely reimagines the original color for something new.



E49FAD



FFA3B6



9FD0E4



73676A



B30024

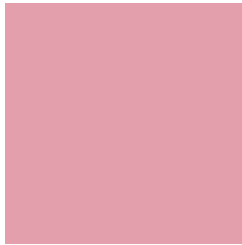


33000A



# Previews

## White Background



This preview shows how the Hex color E49FAD looks on a white background.

## Color Contrast Check

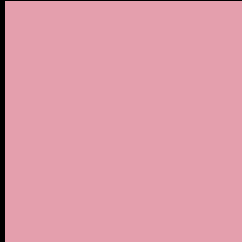
Large Text (above 18pt) WCAG AA × Fail

Any Text WCAG AA × Fail

Large Text (above 18pt) WCAG AAA × Fail

Any Text WCAG AAA × Fail

# Black Background



This preview shows how the Hex color E49FAD looks on a black background.

## Color Contrast Check

Large Text (above 18pt) WCAG AA ✓ Pass

Any Text WCAG AA ✓ Pass

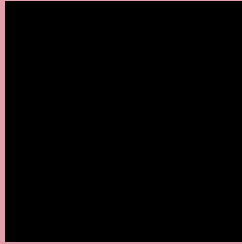
Large Text (above 18pt) WCAG AAA ✓ Pass

Any Text WCAG AAA ✓ Pass

If you want to check with other color combinations, try the [Color Contrast Checker](#).



## Hex E49FAD Background



This preview shows how black text looks on a background with the Hex color E49FAD.

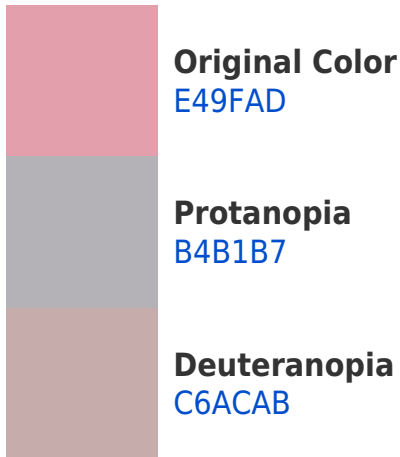


This preview shows how white text looks on a background with the Hex color E49FAD.

# Color Blindness Simulation

Color vision deficiency is a very complex topic, and I could not describe the different causes any better than Wikipedia does, so if you want to learn more, you should check out their [article about color blindness](#).

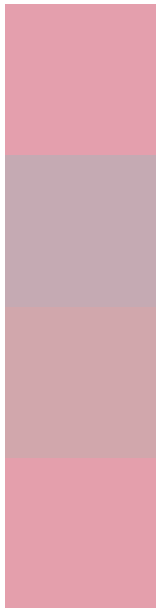
## Dichromacy





**Tritanopia**  
E49FAB

# Trichromacy



**Original Color**  
E49FAD

**Protanomaly**  
C5AAB3

**Deuteranomaly**  
D1A7AC

**Tritanomaly**  
E49FAC

# Monochromacy



**Original Color**  
E49FAD

**Achromatopsia**  
B5B5B5

**Achromatomaly**  
C6ADB2

# CSS Examples

## Text

The CSS property to change the color of the text to Hex E49FAD is called "color". The color property can be set on classes, ids or directly on the HTML element.

This example shows how text in the color #E49FAD looks like.

```
.text, #text, p{  
    color:#E49FAD  
}
```

If you want to add a text shadow in that color use the text-shadow property, you can generate a text shadow directly with our [CSS Text Shadow Generator](#).

Here you see how black text with a 4 pixel #E49FAD colored shadow looks like.

```
.shadow{ text-shadow: 4px 4px 2px #E49FAD
}
```

## Border

The CSS property to change the border of an element to Hex E49FAD is called "border". The border property can be set on classes, ids or directly on the HTML element.

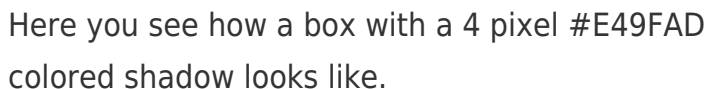
This example shows the color as border, it can be applied via the CSS property "border" or "border-color".

```
.border, #border, table{ border:4px solid
#E49FAD }
```

If only the border color should be changed use the property `border-color`.

```
.border{ border-color:#E49FAD }
```

If you want to add a box shadow in that color use:



Here you see how a box with a 4 pixel #E49FAD colored shadow looks like.

```
.boxshadow{ -moz-box-shadow:4px 4px 4px  
4px #E49FAD; -webkit-box-shadow:4px 4px  
4px 4px #E49FAD; box-shadow:4px 4px 4px  
4px #E49FAD }
```

# Background

The CSS property to change the background color of an element to Hex E49FAD is called "background". The background property can be set on classes, ids or directly on the HTML element.

```
.background, #background, body{  
background:#E49FAD }
```

If only the background color should be changed can be used:

```
.background{ background-color:#E49FAD }
```

This example shows the color as background, it is applied via the CSS property "background".

To optimize and compress your CSS code, you can use our [online CSS compressor and optimizer](#) based on csstidy. If you want to create a linear or radial gradient as background or border, check our [CSS Gradient Generator](#).



Hey! You found this booklet interesting? Support Converting Colors with the new Membership Option!

The pro membership hides all ads, plus gives you double the colors in the color bucket, and more awesome pro features!

**[Learn more, Memberships starting at \\$2.50/m!](#)**

**Follow me  
on Twitter!**

@ConvertingColor