

# Converting Colors

Hex(E4AAB4)

Have a look what the booklet for  
Hex(E4AAB4) contains.

<b>Hex(E4AAB4)</b> .....	3
<i><b>Conversions</b></i> .....	4
<i><b>Details</b></i> .....	6
<i><b>Harmonies</b></i> .....	11
<i><b>Previews</b></i> .....	23
<i><b>Color Blindness Simulation</b></i> .....	26
<i><b>CSS Examples</b></i> .....	29

# **Color**

**Hex(E4AAB4)**

# Conversions

## Conversions Part 1

Format	Color
Hex	E4AAB4
RGB	228, 170, 180
RGB Percent	89%, 67%, 71%
CMY	0.1059, 0.3333, 0.2941
CMYK	0.00, 0.25, 0.21, 0.11
HSL	350°, 52%, 78%
HSV	350°, 25%, 89%
XYZ	54.6079, 48.5387, 49.6708
YIQ	188.4820, 31.3580, 15.4060

# Conversions

## Conversions Part 2

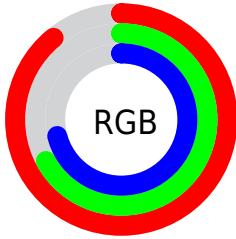
<b>Format</b>	<b>Color</b>
<b>R<sub>YB</sub></b>	228, 170, 180
Decimal	14985908
CIE Lab	75.16, 22.72, 3.22
CIE LCh	75, 22.945, 8.061
Yxy	48.5387, 0.3573, 0.3176
Android (android.graphics.Color)	4293175988 (0xFFE4AAB4)
YUV	188.4820, -4.1816, 34.6573
Hunter-Lab	69.6697, 17.9881, 6.4982

# Details

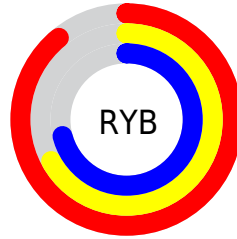
The Hex color **E4AAB4** is a light color, and the websafe version is hex **CC9999**. A complement of this color would be **AAE4DA**, and the grayscale version is **BDBDBD**.

A 20% lighter version of the original color is **FFE2EC**, and **AC757F** is the 20% darker color. If you saturate the color by 10%, you get **E493A1**, and if you desaturate by 10%, it is **E4C1C7**.

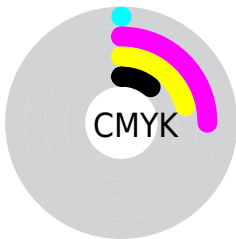
# Distribution



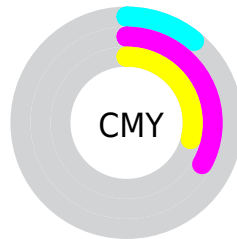
- Red (89%)
- Green (67%)
- Blue (71%)



- Red (89%)
- Yellow (67%)
- Blue (71%)



- Cyan (0%)
- Magenta (25%)
- Yellow (21%)
- Black (11%)



- Cyan (11%)
- Magenta (33%)
- Yellow (29%)

# Brightness & Saturation Gradients

These gradients show how the Hex color E4AAB4 changes by changing the brightness by 10 percent. The first figure shows a shift by +10% for each color and the second figure -10%.

Similar to the brightness gradients but the following saturation gradients show a change of the Hex color E4AAB4 by changing the saturation by 10% instead.



 E4AAB4

 E4AAB4

FFFFFF

 C78F99

 FFE2EC

 AC757F

FFFEFF

 905C66

 76444E

 5C2D38

 431722

 2C000C

 050000

 000000

 E4AAB4

 E4AAB4

 E493A1

 E4C1C7

 E47C8E

 E4D8DA

 E4667B

 E4EEED

 E44F69

 E4FFFF

 E43856

 E42143

 E40A30

 E40027

# Harmonies

## Analogous

The Analogous color harmony consists of three colors that are next to each other on the color wheel.



D9ACC9



E4AAB4



E3ADA0

# Triad

The Triadic color harmony groups three colors that are evenly spaced from another and form a triangle on the color wheel.



E4AAB4



ACC097



8DC0E0

# Complementary

The Complementary color scheme is a pair of colors which are on the opposite of each other on the color wheel.



E4AAB4



AAE4DA

# Split Complementary

Split-complementary colors differ from the complementary color scheme. The scheme consists of three colors, the original color and two neighbors of the complement color.



7FC4D2



E4AAB4



94C4A9

# Square

The Square scheme is like the rectangle color scheme, but the four colors are evenly spaced on the color wheel.



E4AAB4



C3BA8F



82C5BE



A8B9E3

# Rectangle

The Rectangle color scheme consists of four colors that form a rectangle on the color wheel.



E4AAB4



DCB096



82C5BE



87C1DC

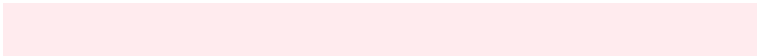


# Sweetspot

The Sweet Spot groups the original color and five complimentary colors.



E4AAB4



FFEBEE



D9AAE4



807375



000000



808080



# Same Dimension

The Same Dimension uses a secret algorithm to generate beautiful new colors.



E4AAB4



FFB0BE



E4BCAA



736769



B3001F



330009



# Inverse Universe

The Inverse Universe completely reimagines the original color for something new.



E4AAB4



FFB0BE



AAD2E4



736769



B3001F

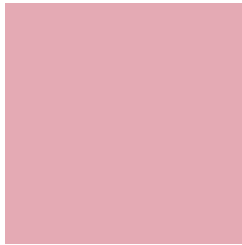


330009



# Previews

## White Background



This preview shows how the Hex color E4AAB4 looks on a white background.

## Color Contrast Check

Large Text (above 18pt) WCAG AA × Fail

Any Text WCAG AA × Fail

Large Text (above 18pt) WCAG AAA × Fail

Any Text WCAG AAA × Fail

# Black Background



This preview shows how the Hex color E4AAB4 looks on a black background.

## Color Contrast Check

Large Text (above 18pt) WCAG AA ✓ Pass

Any Text WCAG AA ✓ Pass

Large Text (above 18pt) WCAG AAA ✓ Pass

Any Text WCAG AAA ✓ Pass

If you want to check with other color combinations, try the [Color Contrast Checker](#).



## Hex E4AAB4 Background



This preview shows how black text looks on a background with the Hex color E4AAB4.



This preview shows how white text looks on a background with the Hex color E4AAB4.

# Color Blindness Simulation

Color vision deficiency is a very complex topic, and I could not describe the different causes any better than Wikipedia does, so if you want to learn more, you should check out their [article about color blindness](#).

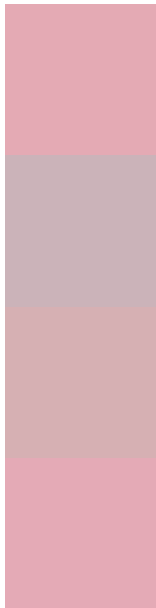
## Dichromacy





**Tritanopia**  
E4AAB7

# Trichromacy



**Original Color**  
E4AAB4

**Protanomaly**  
CBB3B9

**Deuteranomaly**  
D6B0B3

**Tritanomaly**  
E4AAB6

# Monochromacy



**Original Color**  
E4AAB4

**Achromatopsia**  
BCBCBC

**Achromatomaly**  
CBB5B9

# CSS Examples

## Text

The CSS property to change the color of the text to Hex E4AAB4 is called "color". The color property can be set on classes, ids or directly on the HTML element.

This example shows how text in the color #E4AAB4 looks like.

```
.text, #text, p{  
    color:#E4AAB4  
}
```

If you want to add a text shadow in that color use the text-shadow property, you can generate a text shadow directly with our [CSS Text Shadow Generator](#).

Here you see how black text with a 4 pixel #E4AAB4 colored shadow looks like.

```
.shadow{ text-shadow: 4px 4px 2px #E4AAB4
}
```

## Border

The CSS property to change the border of an element to Hex E4AAB4 is called "border". The border property can be set on classes, ids or directly on the HTML element.

This example shows the color as border, it can be applied via the CSS property "border" or "border-color".

```
.border, #border, table{ border:4px solid
#E4AAB4 }
```

If only the border color should be changed use the property `border-color`.

```
.border{ border-color:#E4AAB4 }
```

If you want to add a box shadow in that color use:

Here you see how a box with a 4 pixel #E4AAB4 colored shadow looks like.

```
.boxshadow{ -moz-box-shadow:4px 4px 4px  
4px #E4AAB4; -webkit-box-shadow:4px 4px  
4px 4px #E4AAB4; box-shadow:4px 4px 4px  
4px #E4AAB4 }
```

# Background

The CSS property to change the background color of an element to Hex E4AAB4 is called "background". The background property can be set on classes, ids or directly on the HTML element.

```
.background, #background, body{  
background:#E4AAB4 }
```

If only the background color should be changed can be used:

```
.background{ background-color:#E4AAB4 }
```

This example shows the color as background, it is applied via the CSS property "background".

To optimize and compress your CSS code, you can use our [online CSS compressor and optimizer](#) based on csstidy. If you want to create a linear or radial gradient as background or border, check our [CSS Gradient Generator](#).



Hey! You found this booklet interesting? Support Converting Colors with the new Membership Option!

The pro membership hides all ads, plus gives you double the colors in the color bucket, and more awesome pro features!

**[Learn more, Memberships starting at \\$2.50/m!](#)**

**Follow me  
on Twitter!**

@ConvertingColor