

Converting Colors

Hex(E4ADB8)

Have a look what the booklet for
Hex(E4ADB8) contains.

Hex(E4ADB8)	3
<i>Conversions</i>	4
<i>Details</i>	6
<i>Harmonies</i>	11
<i>Previews</i>	23
<i>Color Blindness Simulation</i>	26
<i>CSS Examples</i>	29

Color

Hex(E4ADB8)

Conversions

Conversions Part 1

Format	Color
Hex	E4ADB8
RGB	228, 173, 184
RGB Percent	89%, 68%, 72%
CMY	0.1059, 0.3216, 0.2784
CMYK	0.00, 0.24, 0.19, 0.11
HSL	348°, 50%, 79%
HSV	348°, 24%, 89%
XYZ	55.5902, 49.8418, 52.0379
YIQ	190.6990, 29.2490, 15.0810

Conversions

Conversions Part 2

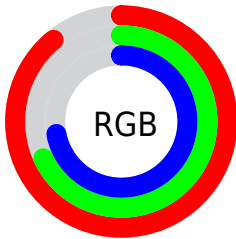
Format	Color
R _Y B	228, 173, 184
Decimal	14986680
CIE Lab	75.97, 21.71, 2.20
CIE LCh	76, 21.822, 5.796
Yxy	49.8418, 0.3530, 0.3165
Android (android.graphics.Color)	4293176760 (0xFFE4ADB8)
YUV	190.6990, -3.3026, 32.7130
Hunter-Lab	70.5987, 17.0050, 5.7168

Details

The Hex color **E4ADB8** is a light color, and the websafe version is hex **CC9999**. A complement of this color would be **ADE4D9**, and the grayscale version is **BFBFBF**.

A 20% lighter version of the original color is **FFE5F0**, and **AC7883** is the 20% darker color. If you saturate the color by 10%, you get **E496A6**, and if you desaturate by 10%, it is **E4C4CA**.

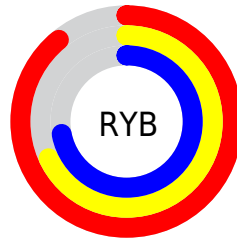
Distribution



Red (89%)

Green (68%)

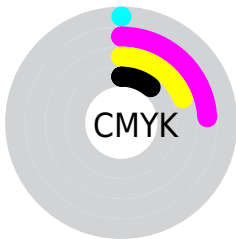
Blue (72%)



Red (89%)

Yellow (68%)

Blue (72%)

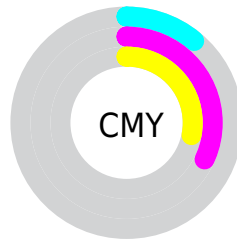


Cyan (0%)

Magenta (24%)

Yellow (19%)

Black (11%)



Cyan (11%)

Magenta (32%)

Yellow (28%)

Brightness & Saturation Gradients

These gradients show how the Hex color E4ADB8 changes by changing the brightness by 10 percent. The first figure shows a shift by +10% for each color and the second figure -10%.

Similar to the brightness gradients but the following saturation gradients show a change of the Hex color E4ADB8 by changing the saturation by 10% instead.

 E4ADB8


FFFFFF

 FFE5F0

 E4ADB8

 C8929D

 AC7883

 915F6A

 764752

 5D303B

 441A25

 2D0310

 0B0000

 000000

 E4ADB8

 E4ADB8

 E496A6

 E4C4CA

 E47F94

 E4DBDC

 E46981

 E4F1EF

 E4526F

 E4FFFF

 E43B5D

 E4244B

 E40D38

 E4002E

Harmonies

Analogous

The Analogous color harmony consists of three colors that are next to each other on the color wheel.



D9AFCC



E4ADB8



E4AFA5

Triad

The Triadic color harmony groups three colors that are evenly spaced from another and form a triangle on the color wheel.



E4ADB8



B0C19A



91C2DF

Complementary

The Complementary color scheme is a pair of colors which are on the opposite of each other on the color wheel.



E4ADB8



ADE4D9

Split Complementary

Split-complementary colors differ from the complementary color scheme. The scheme consists of three colors, the original color and two neighbors of the complement color.



84C6D2



E4ADB8



9AC5AA

Square

The Square scheme is like the rectangle color scheme, but the four colors are evenly spaced on the color wheel.



E4ADB8



C7BB93



89C7BF



A9BCE3

Rectangle

The Rectangle color scheme consists of four colors that form a rectangle on the color wheel.



E4ADB8



DEB29B



89C7BF



8BC3DC

Sweetspot

The Sweet Spot groups the original color and five complimentary colors.



E4ADB8



FFEDF1



D9ADE4



807577



000000



808080

Same Dimension

The Same Dimension uses a secret algorithm to generate beautiful new colors.



E4ADB8



FFB5C4



E4BEAD



73676A



B30024



33000A

Inverse Universe

The Inverse Universe completely reimagines the original color for something new.



E4ADB8



FFB5C4



ADD3E4



73676A



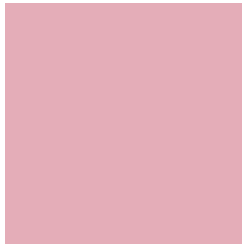
B30024



33000A

Previews

White Background



This preview shows how the Hex color E4ADB8 looks on a white background.

Color Contrast Check

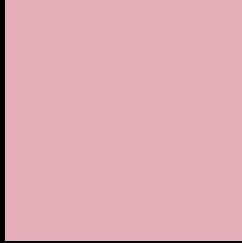
Large Text (above 18pt) WCAG AA × Fail

Any Text WCAG AA × Fail

Large Text (above 18pt) WCAG AAA × Fail

Any Text WCAG AAA × Fail

Black Background



This preview shows how the Hex color E4ADB8 looks on a black background.

Color Contrast Check

Large Text (above 18pt) WCAG AA ✓ Pass

Any Text WCAG AA ✓ Pass

Large Text (above 18pt) WCAG AAA ✓ Pass

Any Text WCAG AAA ✓ Pass

If you want to check with other color combinations, try the [Color Contrast Checker](#).

Hex E4ADB8 Background



This preview shows how black text looks on a background with the Hex color E4ADB8.

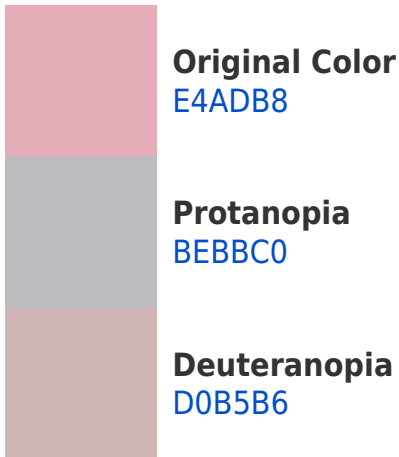


This preview shows how white text looks on a background with the Hex color E4ADB8.

Color Blindness Simulation

Color vision deficiency is a very complex topic, and I could not describe the different causes any better than Wikipedia does, so if you want to learn more, you should check out their [article about color blindness](#).

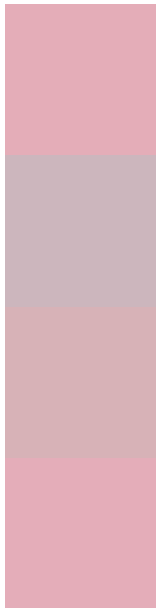
Dichromacy





Tritanopia
E4ADBA

Trichromacy



Original Color
E4ADB8

Protanomaly
CCB6BD

Deuteranomaly
D7B2B7

Tritanomaly
E4ADB9

Monochromacy



Original Color
E4ADB8

Achromatopsia
BFBFBF

Achromatomaly
CCB8BC

CSS Examples

Text

The CSS property to change the color of the text to Hex E4ADB8 is called "color". The color property can be set on classes, ids or directly on the HTML element.

This example shows how text in the color #E4ADB8 looks like.

```
.text, #text, p{  
    color:#E4ADB8  
}
```

If you want to add a text shadow in that color use the text-shadow property, you can generate a text shadow directly with our [CSS Text Shadow Generator](#).

Here you see how black text with a 4 pixel #E4ADB8 colored shadow looks like.

```
.shadow{ text-shadow: 4px 4px 2px #E4ADB8  
}
```

Border

The CSS property to change the border of an element to Hex E4ADB8 is called "border". The border property can be set on classes, ids or directly on the HTML element.

This example shows the color as border, it can be applied via the CSS property "border" or "border-color".

```
.border, #border, table{ border:4px solid  
#E4ADB8 }
```

If only the border color should be changed use the property `border-color`.

```
.border{ border-color:#E4ADB8 }
```

If you want to add a box shadow in that color use:

Here you see how a box with a 4 pixel #E4ADB8 colored shadow looks like.

```
.boxshadow{ -moz-box-shadow:4px 4px 4px  
4px #E4ADB8; -webkit-box-shadow:4px 4px  
4px 4px #E4ADB8; box-shadow:4px 4px 4px  
4px #E4ADB8 }
```

Background

The CSS property to change the background color of an element to Hex E4ADB8 is called "background". The background property can be set on classes, ids or directly on the HTML element.

```
.background, #background, body{  
background:#E4ADB8 }
```

If only the background color should be changed can be used:

```
.background{ background-color:#E4ADB8 }
```

This example shows the color as background, it is applied via the CSS property "background".

To optimize and compress your CSS code, you can use our [online CSS compressor and optimizer](#) based on csstidy. If you want to create a linear or radial gradient as background or border, check our [CSS Gradient Generator](#).

Hey! You found this booklet interesting? Support Converting Colors with the new Membership Option!

The pro membership hides all ads, plus gives you double the colors in the color bucket, and more awesome pro features!

[Learn more, Memberships starting at \\$2.50/m!](#)

**Follow me
on Twitter!**

@ConvertingColor