

Converting Colors

Hex(E4B4A7)

Have a look what the booklet for
Hex(E4B4A7) contains.

Hex(E4B4A7)	3
<i>Conversions</i>	4
<i>Details</i>	6
<i>Harmonies</i>	11
<i>Previews</i>	23
<i>Color Blindness Simulation</i>	26
<i>CSS Examples</i>	29

Color

Hex(E4B4A7)

Conversions

Conversions Part 1

Format	Color
Hex	E4B4A7
RGB	228, 180, 167
RGB Percent	89%, 71%, 65%
CMY	0.1059, 0.2941, 0.3451
CMYK	0.00, 0.21, 0.27, 0.11
HSL	13°, 53%, 77%
HSV	13°, 27%, 89%
XYZ	55.2912, 51.9265, 43.6679
YIQ	192.8700, 32.7810, 6.1330

Conversions

Conversions Part 2

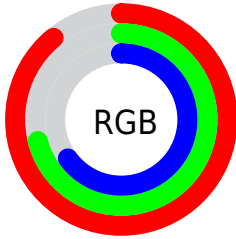
Format	Color
RYB	228, 184, 167
Decimal	14988455
CIELab	77.24, 15.51, 13.26
CIELCh	77, 20.405, 40.539
Yxy	51.9265, 0.3664, 0.3441
Android (android.graphics.Color)	4293178535 (0xFFE4B4A7)
YUV	192.8700, -12.7539, 30.8090
Hunter-Lab	72.0601, 10.8568, 14.5127

Details

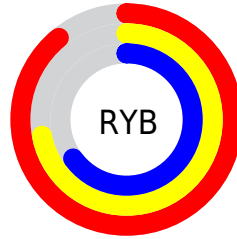
The Hex color **E4B4A7** is a light color, and the websafe version is hex **FFCCCC**. A complement of this color would be **A7D7E4**, and the grayscale version is **C1C1C1**.

A 20% lighter version of the original color is **FFECDE**, and **AC7F73** is the 20% darker color. If you saturate the color by 10%, you get **E4A290**, and if you desaturate by 10%, it is **E4C6BE**.

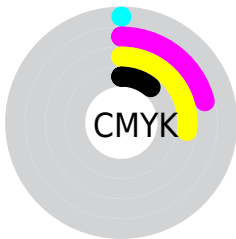
Distribution



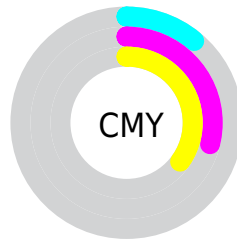
- Red (89%)
- Green (71%)
- Blue (65%)



- Red (89%)
- Yellow (72%)
- Blue (65%)



- Cyan (0%)
- Magenta (21%)
- Yellow (27%)
- Black (11%)



- Cyan (11%)
- Magenta (29%)
- Yellow (35%)

Brightness & Saturation Gradients

These gradients show how the Hex color E4B4A7 changes by changing the brightness by 10 percent. The first figure shows a shift by +10% for each color and the second figure -10%.

Similar to the brightness gradients but the following saturation gradients show a change of the Hex color E4B4A7 by changing the saturation by 10% instead.

 E4B4A7

 E4B4A7

FFFFFF

 C7998D

 FFECDE

 AC7F73

 FFFFFB

 90665B

 764E43

 5C372D

 432118

 2D0C00

 090000

 000000

 E4B4A7

 E4B4A7

 E4A290

 E4C6BE

 E49079

 E4D8D5

 E47E63

 E4EAEB

 E46C4C

 E4FCFF

 E45A35

 E4FFFF

 E4481E

 E43607

 E43100

Harmonies

Analogous

The Analogous color harmony consists of three colors that are next to each other on the color wheel.



E6B2B9



E4B4A7



D9B99C

Triad

The Triadic color harmony groups three colors that are evenly spaced from another and form a triangle on the color wheel.



E4B4A7



9CC9B2



B2BEE4

Complementary

The Complementary color scheme is a pair of colors which are on the opposite of each other on the color wheel.



E4B4A7



A7D7E4

Split Complementary

Split-complementary colors differ from the complementary color scheme. The scheme consists of three colors, the original color and two neighbors of the complement color.



9BC4E2



E4B4A7



8ECAC5

Square

The Square scheme is like the rectangle color scheme, but the four colors are evenly spaced on the color wheel.



E4B4A7



B1C5A2



8DC8D7



CAB8DC

Rectangle

The Rectangle color scheme consists of four colors that form a rectangle on the color wheel.



E4B4A7



CDBE99



8DC8D7



AAC0E4

Sweetspot

The Sweet Spot groups the original color and five complimentary colors.



E4B4A7



FFEFE8



E4A7D8



807573



000000



808080

Same Dimension

The Same Dimension uses a secret algorithm to generate beautiful new colors.



E4B4A7



FFBFAD



E4D2A7



736A67



B32600



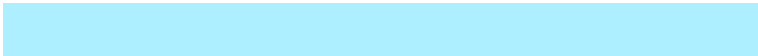
330B00

Inverse Universe

The Inverse Universe completely reimagines the original color for something new.



A7D7E4



ADEEFF



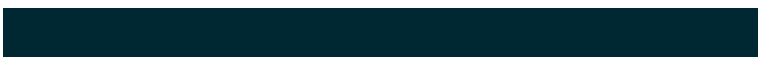
A7B9E4



677073



008CB3



002833

Previews

White Background



This preview shows how the Hex color E4B4A7 looks on a white background.

Color Contrast Check

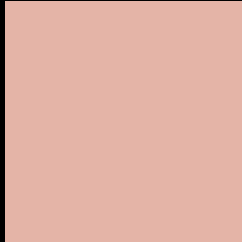
Large Text (above 18pt) WCAG AA × Fail

Any Text WCAG AA × Fail

Large Text (above 18pt) WCAG AAA × Fail

Any Text WCAG AAA × Fail

Black Background



This preview shows how the Hex color E4B4A7 looks on a black background.

Color Contrast Check

Large Text (above 18pt) WCAG AA ✓ Pass

Any Text WCAG AA ✓ Pass

Large Text (above 18pt) WCAG AAA ✓ Pass

Any Text WCAG AAA ✓ Pass

If you want to check with other color combinations, try the [Color Contrast Checker](#).

Hex E4B4A7 Background



This preview shows how black text looks on a background with the Hex color E4B4A7.

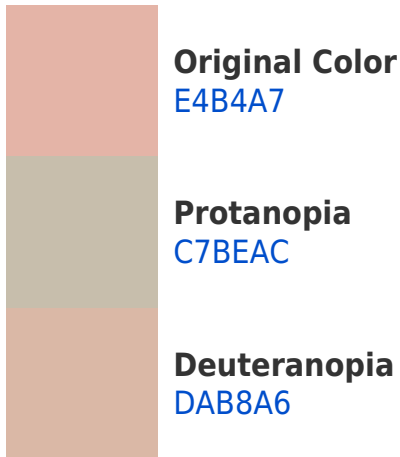


This preview shows how white text looks on a background with the Hex color E4B4A7.

Color Blindness Simulation

Color vision deficiency is a very complex topic, and I could not describe the different causes any better than Wikipedia does, so if you want to learn more, you should check out their [article about color blindness](#).

Dichromacy





Tritanopia
E7B1BE

Trichromacy



Original Color
E4B4A7

Protanomaly
D2BAAA

Deuteranomaly
DEB7A6

Tritanomaly
E6B2B6

Monochromacy



Original Color
E4B4A7

Achromatopsia
C1C1C1

Achromatomaly
CEBCB8

CSS Examples

Text

The CSS property to change the color of the text to Hex E4B4A7 is called "color". The color property can be set on classes, ids or directly on the HTML element.

This example shows how text in the color #E4B4A7 looks like.

```
.text, #text, p{  
    color:#E4B4A7  
}
```

If you want to add a text shadow in that color use the text-shadow property, you can generate a text shadow directly with our [CSS Text Shadow Generator](#).

Here you see how black text with a 4 pixel #E4B4A7 colored shadow looks like.

```
.shadow{ text-shadow: 4px 4px 2px #E4B4A7  
}
```

Border

The CSS property to change the border of an element to Hex E4B4A7 is called "border". The border property can be set on classes, ids or directly on the HTML element.

This example shows the color as border, it can be applied via the CSS property "border" or "border-color".

```
.border, #border, table{ border:4px solid  
#E4B4A7 }
```

If only the border color should be changed use the property `border-color`.

```
.border{ border-color:#E4B4A7 }
```

If you want to add a box shadow in that color use:

Here you see how a box with a 4 pixel #E4B4A7 colored shadow looks like.

```
.boxshadow{ -moz-box-shadow:4px 4px 4px  
4px #E4B4A7; -webkit-box-shadow:4px 4px  
4px 4px #E4B4A7; box-shadow:4px 4px 4px  
4px #E4B4A7 }
```

Background

The CSS property to change the background color of an element to Hex E4B4A7 is called "background". The background property can be set on classes, ids or directly on the HTML element.

```
.background, #background, body{  
background:#E4B4A7 }
```

If only the background color should be changed can be used:

```
.background{ background-color:#E4B4A7 }
```

This example shows the color as background, it is applied via the CSS property "background".

To optimize and compress your CSS code, you can use our [online CSS compressor and optimizer](#) based on csstidy. If you want to create a linear or radial gradient as background or border, check our [CSS Gradient Generator](#).

Hey! You found this booklet interesting? Support Converting Colors with the new Membership Option!

The pro membership hides all ads, plus gives you double the colors in the color bucket, and more awesome pro features!

[Learn more, Memberships starting at \\$2.50/m!](#)

**Follow me
on Twitter!**

@ConvertingColor