

# Converting Colors

Hex(E4B4BF)

Have a look what the booklet for  
Hex(E4B4BF) contains.

<b>Hex(E4B4BF)</b> .....	3
<i><b>Conversions</b></i> .....	4
<i><b>Details</b></i> .....	6
<i><b>Harmonies</b></i> .....	11
<i><b>Previews</b></i> .....	23
<i><b>Color Blindness Simulation</b></i> .....	26
<i><b>CSS Examples</b></i> .....	29

# **Color**

**Hex(E4B4BF)**

# Conversions

## Conversions Part 1

Format	Color
Hex	E4B4BF
RGB	228, 180, 191
RGB Percent	89%, 71%, 75%
CMY	0.1059, 0.2941, 0.2510
CMYK	0.00, 0.21, 0.16, 0.11
HSL	346°, 47%, 80%
HSV	346°, 21%, 89%
XYZ	57.7201, 52.8981, 56.4584
YIQ	195.6060, 25.0770, 13.5970

# Conversions

## Conversions Part 2

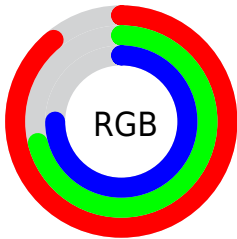
Format	Color
R <sub>Y</sub> B	228, 180, 191
Decimal	14988479
CIE Lab	77.81, 19.04, 1.07
CIE LCh	78, 19.071, 3.225
Yxy	52.8981, 0.3455, 0.3166
Android (android.graphics.Color)	4293178559 (0xFFE4B4BF)
YUV	195.6060, -2.2708, 28.4095
Hunter-Lab	72.7311, 14.3801, 4.8872

# Details

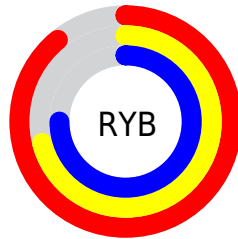
The Hex color **E4B4BF** is a light color, and the websafe version is hex **FFCCCC**. A complement of this color would be **B4E4D9**, and the grayscale version is **C4C4C4**.

A 20% lighter version of the original color is **FFECF7**, and **AC7F8A** is the 20% darker color. If you saturate the color by 10%, you get **E49DAD**, and if you desaturate by 10%, it is **E4CBD1**.

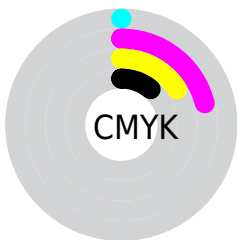
# Distribution



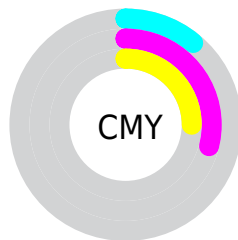
- Red (89%)
- Green (71%)
- Blue (75%)



- Red (89%)
- Yellow (71%)
- Blue (75%)



- Cyan (0%)
- Magenta (21%)
- Yellow (16%)
- Black (11%)



- Cyan (11%)
- Magenta (29%)
- Yellow (25%)

# Brightness & Saturation Gradients

These gradients show how the Hex color E4B4BF changes by changing the brightness by 10 percent. The first figure shows a shift by +10% for each color and the second figure -10%.

Similar to the brightness gradients but the following saturation gradients show a change of the Hex color E4B4BF by changing the saturation by 10% instead.



 E4B4BF


 E4B4BF

FFFFFF

 C899A4

 FFECE7

 AC7F8A

 916670

 774D58

 5D3641

 45202B

 2E0B16

 150000

 000000

 E4B4BF

 E4B4BF

 E49DAD

 E4CBD1

 E4869C

 E4E2E2

 E4708A

 E4F8F4

 E45979

 E4FFFF

 E44267

 E42B56

 E41444

 E40034

# Harmonies

## Analogous

The Analogous color harmony consists of three colors that are next to each other on the color wheel.



D9B6D1



E4B4BF



E5B5AE

# Triad

The Triadic color harmony groups three colors that are evenly spaced from another and form a triangle on the color wheel.



E4B4BF



B9C5A3



9BC6DF

# Complementary

The Complementary color scheme is a pair of colors which are on the opposite of each other on the color wheel.



E4B4BF



B4E4D9

# Split Complementary

Split-complementary colors differ from the complementary color scheme. The scheme consists of three colors, the original color and two neighbors of the complement color.



91CAD3



E4B4BF



A5C9B0

# Square

The Square scheme is like the rectangle color scheme, but the four colors are evenly spaced on the color wheel.



E4B4BF



CCC09D



96CBC2



AFC1E3

# Rectangle

The Rectangle color scheme consists of four colors that form a rectangle on the color wheel.



E4B4BF



E0B8A5



96CBC2



96C8DC



# Sweetspot

The Sweet Spot groups the original color and five complimentary colors.



E4B4BF



FFF0F3



D9B4E4



807779



000000



808080



# Same Dimension

The Same Dimension uses a secret algorithm to generate beautiful new colors.



E4B4BF



FFBFCE



E4C1B4



73676A



B30029



33000C



# Inverse Universe

The Inverse Universe completely reimagines the original color for something new.



E4B4BF



FFBFCE



B4D7E4



73676A



B30029

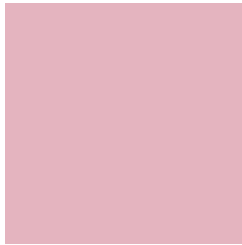


33000C



# Previews

## White Background



This preview shows how the Hex color E4B4BF looks on a white background.

## Color Contrast Check

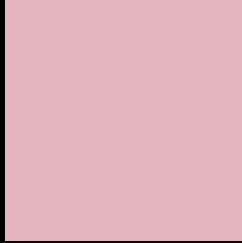
Large Text (above 18pt) WCAG AA × Fail

Any Text WCAG AA × Fail

Large Text (above 18pt) WCAG AAA × Fail

Any Text WCAG AAA × Fail

# Black Background



This preview shows how the Hex color E4B4BF looks on a black background.

## Color Contrast Check

Large Text (above 18pt) WCAG AA ✓ Pass

Any Text WCAG AA ✓ Pass

Large Text (above 18pt) WCAG AAA ✓ Pass

Any Text WCAG AAA ✓ Pass

If you want to check with other color combinations, try the [Color Contrast Checker](#).



## Hex E4B4BF Background



This preview shows how black text looks on a background with the Hex color E4B4BF.



This preview shows how white text looks on a background with the Hex color E4B4BF.

# Color Blindness Simulation

Color vision deficiency is a very complex topic, and I could not describe the different causes any better than Wikipedia does, so if you want to learn more, you should check out their [article about color blindness](#).

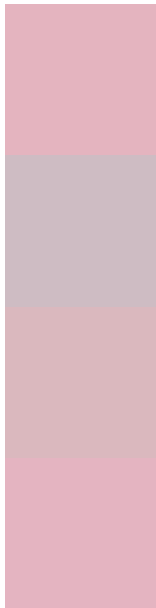
## Dichromacy





**Tritanopia**  
E4B4C2

# Trichromacy



**Original Color**  
E4B4BF

**Protanomaly**  
CEBCC3

**Deuteranomaly**  
DAB8BE

**Tritanomaly**  
E4B4C1

# Monochromacy



**Original Color**  
E4B4BF

**Achromatopsia**  
C4C4C4

**Achromatomaly**  
D0BEC2

# CSS Examples

## Text

The CSS property to change the color of the text to Hex E4B4BF is called "color". The color property can be set on classes, ids or directly on the HTML element.

This example shows how text in the color #E4B4BF looks like.

```
.text, #text, p{  
  color:#E4B4BF  
}
```

If you want to add a text shadow in that color use the text-shadow property, you can generate a text shadow directly with our [CSS Text Shadow Generator](#).

Here you see how black text with a 4 pixel #E4B4BF colored shadow looks like.

```
.shadow{ text-shadow: 4px 4px 2px #E4B4BF
}
```

## Border

The CSS property to change the border of an element to Hex E4B4BF is called "border". The border property can be set on classes, ids or directly on the HTML element.

This example shows the color as border, it can be applied via the CSS property "border" or "border-color".

```
.border, #border, table{ border:4px solid
#E4B4BF }
```

If only the border color should be changed use the property `border-color`.

```
.border{ border-color:#E4B4BF }
```

If you want to add a box shadow in that color use:

Here you see how a box with a 4 pixel #E4B4BF colored shadow looks like.

```
.boxshadow{ -moz-box-shadow:4px 4px 4px  
4px #E4B4BF; -webkit-box-shadow:4px 4px  
4px 4px #E4B4BF; box-shadow:4px 4px 4px  
4px #E4B4BF }
```

# Background

The CSS property to change the background color of an element to Hex E4B4BF is called "background". The background property can be set on classes, ids or directly on the HTML element.

```
.background, #background, body{  
background:#E4B4BF }
```

If only the background color should be changed can be used:

```
.background{ background-color:#E4B4BF }
```

This example shows the color as background, it is applied via the CSS property "background".

To optimize and compress your CSS code, you can use our [online CSS compressor and optimizer](#) based on csstidy. If you want to create a linear or radial gradient as background or border, check our [CSS Gradient Generator](#).



Hey! You found this booklet interesting? Support Converting Colors with the new Membership Option!

The pro membership hides all ads, plus gives you double the colors in the color bucket, and more awesome pro features!

**[Learn more, Memberships starting at \\$2.50/m!](#)**

**Follow me  
on Twitter!**

@ConvertingColor