

# Converting Colors

Hex(E4B4DB)

Have a look what the booklet for  
Hex(E4B4DB) contains.

<b>Hex(E4B4DB)</b> .....	3
<i><b>Conversions</b></i> .....	4
<i><b>Details</b></i> .....	6
<i><b>Harmonies</b></i> .....	11
<i><b>Previews</b></i> .....	23
<i><b>Color Blindness Simulation</b></i> .....	26
<i><b>CSS Examples</b></i> .....	29

# **Color**

**Hex(E4B4DB)**

# Conversions

## Conversions Part 1

Format	Color
Hex	E4B4DB
RGB	228, 180, 219
RGB Percent	89%, 71%, 86%
CMY	0.1059, 0.2941, 0.1412
CMYK	0.00, 0.21, 0.04, 0.11
HSL	311°, 47%, 80%
HSV	311°, 21%, 89%
XYZ	61.1023, 54.2510, 74.2689
YIQ	198.7980, 16.0890, 22.3050

# Conversions

## Conversions Part 2

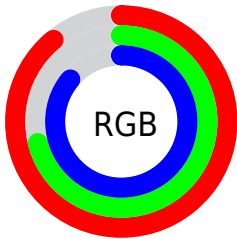
<b>Format</b>	<b>Color</b>
<b>R<sub>YB</sub></b>	228, 180, 219
Decimal	14988507
CIE <sub>Lab</sub>	78.61, 23.74, -12.94
CIE <sub>LCh</sub>	79, 27.033, 331.409
Yxy	54.2510, 0.3222, 0.2861
Android (android.graphics.Color)	4293178587 (0xFFE4B4DB)
YUV	198.7980, 9.9596, 25.6102
Hunter-Lab	73.6553, 19.1819, -8.2253

# Details

The Hex color **E4B4DB** is a light color, and the websafe version is hex **FFCCFF**. A complement of this color would be **B4E4BD**, and the grayscale version is **C7C7C7**.

A 20% lighter version of the original color is **FFECFF**, and **AC7FA4** is the 20% darker color. If you saturate the color by 10%, you get **E49DD7**, and if you desaturate by 10%, it is **E4CBDF**.

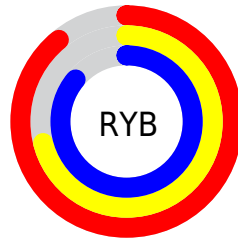
# Distribution



Red (89%)

Green (71%)

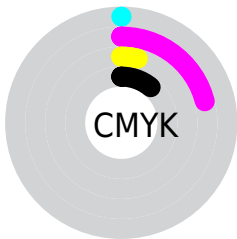
Blue (86%)



Red (89%)

Yellow (71%)

Blue (86%)

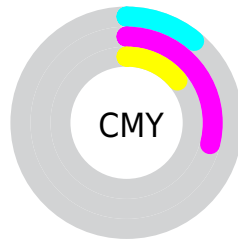


Cyan (0%)

Magenta (21%)

Yellow (4%)

Black (11%)



Cyan (11%)

Magenta (29%)

Yellow (14%)

# Brightness & Saturation Gradients

These gradients show how the Hex color E4B4DB changes by changing the brightness by 10 percent. The first figure shows a shift by +10% for each color and the second figure -10%.

Similar to the brightness gradients but the following saturation gradients show a change of the Hex color E4B4DB by changing the saturation by 10% instead.



 E4B4DB

 E4B4DB

FFFFFF

 C899BF

 FFECFF

 AC7FA4

 91668A

 774D70

 5E3658

 461F40

 2E092A

 1A0016

 000000

 E4B4DB

 E4B4DB

 E49DD7

 E4CBDF

 E486D2

 E4E2E4

 E470CE

 E4F8E8

 E459CA

 E4FFEC

 E442C6

 E4FFF0

 E42BC1

 E4FFF5

 E414BD

 E4FFF9

 E400B9

 E4FFFD

 E4FFFF

# Harmonies

## Analogous

The Analogous color harmony consists of three colors that are next to each other on the color wheel.



C8BCED



E4B4DB



F4B0C2

# Triad

The Triadic color harmony groups three colors that are evenly spaced from another and form a triangle on the color wheel.



E4B4DB



D4C190



79D0DC

# Complementary

The Complementary color scheme is a pair of colors which are on the opposite of each other on the color wheel.



E4B4DB



B4E4BD

# Split Complementary

Split-complementary colors differ from the complementary color scheme. The scheme consists of three colors, the original color and two neighbors of the complement color.



83D1C3



E4B4DB



B9C997

# Square

The Square scheme is like the rectangle color scheme, but the four colors are evenly spaced on the color wheel.



E4B4DB



E9B997



9CCEAA



86CCEE

# Rectangle

The Rectangle color scheme consists of four colors that form a rectangle on the color wheel.



E4B4DB



F6B1B1



9CCEAA



7AD1D4



# Sweetspot

The Sweet Spot groups the original color and five complimentary colors.



E4B4DB



FFF0FC



BDB4E4



80777E



000000



808080



# Same Dimension

The Same Dimension uses a secret algorithm to generate beautiful new colors.



E4B4DB



FFBFF3



E4B4C3



736771



B30091



330029



# Inverse Universe

The Inverse Universe completely reimagines the original color for something new.



E4B4DB



FFBFF3



B4E4D5



736771



B30091



330029



# Previews

## White Background



This preview shows how the Hex color E4B4DB looks on a white background.

## Color Contrast Check

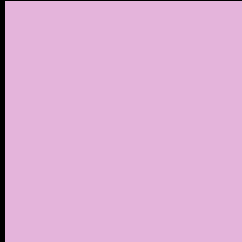
Large Text (above 18pt) WCAG AA × Fail

Any Text WCAG AA × Fail

Large Text (above 18pt) WCAG AAA × Fail

Any Text WCAG AAA × Fail

# Black Background



This preview shows how the Hex color E4B4DB looks on a black background.

## Color Contrast Check

Large Text (above 18pt) WCAG AA ✓ Pass

Any Text WCAG AA ✓ Pass

Large Text (above 18pt) WCAG AAA ✓ Pass

Any Text WCAG AAA ✓ Pass

If you want to check with other color combinations, try the [Color Contrast Checker](#).



## Hex E4B4DB Background



This preview shows how black text looks on a background with the Hex color E4B4DB.

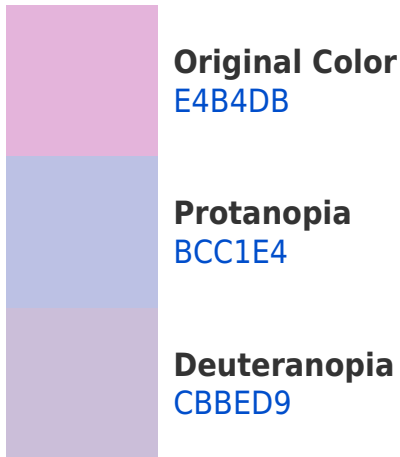


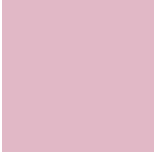
This preview shows how white text looks on a background with the Hex color E4B4DB.

# Color Blindness Simulation

Color vision deficiency is a very complex topic, and I could not describe the different causes any better than Wikipedia does, so if you want to learn more, you should check out their [article about color blindness](#).

## Dichromacy





**Tritanopia**  
E1B8C6

# Trichromacy



**Original Color**  
E4B4DB



**Protanomaly**  
CBBCE1



**Deuteranomaly**  
D4BADA

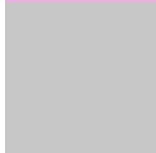


**Tritanomaly**  
E2B7CE

# Monochromacy



**Original Color**  
E4B4DB



**Achromatopsia**  
C7C7C7



**Achromatomaly**  
D2C0CE

# CSS Examples

## Text

The CSS property to change the color of the text to Hex E4B4DB is called "color". The color property can be set on classes, ids or directly on the HTML element.

This example shows how text in the color #E4B4DB looks like.

```
.text, #text, p{  
    color:#E4B4DB  
}
```

If you want to add a text shadow in that color use the text-shadow property, you can generate a text shadow directly with our [CSS Text Shadow Generator](#).

Here you see how black text with a 4 pixel #E4B4DB colored shadow looks like.

```
.shadow{ text-shadow: 4px 4px 2px #E4B4DB
}
```

## Border

The CSS property to change the border of an element to Hex E4B4DB is called "border". The border property can be set on classes, ids or directly on the HTML element.

This example shows the color as border, it can be applied via the CSS property "border" or "border-color".

```
.border, #border, table{ border:4px solid
#E4B4DB }
```

If only the border color should be changed use the property `border-color`.

```
.border{ border-color:#E4B4DB }
```

If you want to add a box shadow in that color use:

Here you see how a box with a 4 pixel #E4B4DB colored shadow looks like.

```
.boxshadow{ -moz-box-shadow:4px 4px 4px  
4px #E4B4DB; -webkit-box-shadow:4px 4px  
4px 4px #E4B4DB; box-shadow:4px 4px 4px  
4px #E4B4DB }
```

# Background

The CSS property to change the background color of an element to Hex E4B4DB is called "background". The background property can be set on classes, ids or directly on the HTML element.

```
.background, #background, body{  
background:#E4B4DB }
```

If only the background color should be changed can be used:

```
.background{ background-color:#E4B4DB }
```

This example shows the color as background, it is applied via the CSS property "background".

To optimize and compress your CSS code, you can use our [online CSS compressor and optimizer](#) based on csstidy. If you want to create a linear or radial gradient as background or border, check our [CSS Gradient Generator](#).



Hey! You found this booklet interesting? Support Converting Colors with the new Membership Option!

The pro membership hides all ads, plus gives you double the colors in the color bucket, and more awesome pro features!

**[Learn more, Memberships starting at \\$2.50/m!](#)**

**Follow me  
on Twitter!**

@ConvertingColor