

Converting Colors

Hex(E4B9BA)

Have a look what the booklet for
Hex(E4B9BA) contains.

Hex(E4B9BA)	3
<i>Conversions</i>	4
<i>Details</i>	6
<i>Harmonies</i>	11
<i>Previews</i>	23
<i>Color Blindness Simulation</i>	26
<i>CSS Examples</i>	29

Color

Hex(E4B9BA)

Conversions

Conversions Part 1

Format	Color
Hex	E4B9BA
RGB	228, 185, 186
RGB Percent	89%, 73%, 73%
CMY	0.1059, 0.2745, 0.2706
CMYK	0.00, 0.19, 0.18, 0.11
HSL	359°, 44%, 81%
HSV	359°, 19%, 89%
XYZ	58.2068, 54.7371, 53.9519
YIQ	197.9710, 25.3070, 9.4270

Conversions

Conversions Part 2

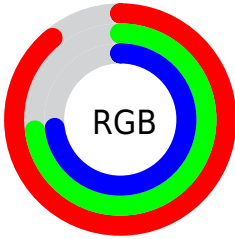
Format	Color
R _Y B	228, 185, 186
Decimal	14989754
CIE Lab	78.89, 15.59, 5.34
CIE LCh	79, 16.484, 18.902
Yxy	54.7371, 0.3488, 0.3280
Android (android.graphics.Color)	4293179834 (0xFFE4B9BA)
YUV	197.9710, -5.9017, 26.3354
Hunter-Lab	73.9845, 10.9607, 8.5530

Details

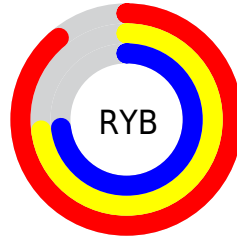
The Hex color **E4B9BA** is a light color, and the websafe version is hex **FFCCCC**. A complement of this color would be **B9E4E3**, and the grayscale version is **C6C6C6**.

A 20% lighter version of the original color is **FFF1F2**, and **AC8485** is the 20% darker color. If you saturate the color by 10%, you get **E4A2A4**, and if you desaturate by 10%, it is **E4D0D0**.

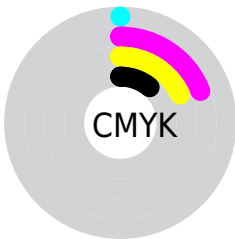
Distribution



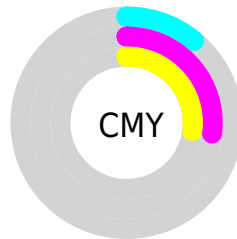
- Red (89%)
- Green (73%)
- Blue (73%)



- Red (89%)
- Yellow (73%)
- Blue (73%)



- Cyan (0%)
- Magenta (19%)
- Yellow (18%)
- Black (11%)



- Cyan (11%)
- Magenta (27%)
- Yellow (27%)

Brightness & Saturation Gradients

These gradients show how the Hex color E4B9BA changes by changing the brightness by 10 percent. The first figure shows a shift by +10% for each color and the second figure -10%.

Similar to the brightness gradients but the following saturation gradients show a change of the Hex color E4B9BA by changing the saturation by 10% instead.

 E4B9BA


FFFFFF

 FFF1F2

 E4B9BA

 C89E9F

 AC8485

 916A6C

 775254

 5E3B3C

 452527

 2E1012

 170000

 000000

 E4B9BA

 E4B9BA

 E4A2A4

 E4D0D0

 E48B8D

 E4E7E7

 E47577

 E4FDFD

 E45E61

 E4FFFF

 E4474B

 E43034

 E4191E

 E40308

 E40005

Harmonies

Analogous

The Analogous color harmony consists of three colors that are next to each other on the color wheel.



DFB9CA



E4B9BA



E0BCAD

Triad

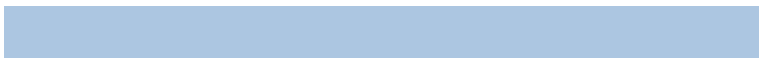
The Triadic color harmony groups three colors that are evenly spaced from another and form a triangle on the color wheel.



E4B9BA



B4CAAF



ACC6E1

Complementary

The Complementary color scheme is a pair of colors which are on the opposite of each other on the color wheel.



E4B9BA



B9E4E3

Split Complementary

Split-complementary colors differ from the complementary color scheme. The scheme consists of three colors, the original color and two neighbors of the complement color.



9ECADA



E4B9BA



A4CCBD

Square

The Square scheme is like the rectangle color scheme, but the four colors are evenly spaced on the color wheel.



E4B9BA



C5C5A6



9CCCCD



BFC1E0

Rectangle

The Rectangle color scheme consists of four colors that form a rectangle on the color wheel.



E4B9BA



DABFA7



9CCCCD



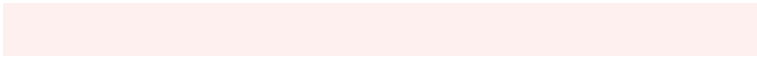
A6C8DF

Sweetspot

The Sweet Spot groups the original color and five complimentary colors.



E4B9BA



FFF0F0



E3B9E4



807777



000000



808080

Same Dimension

The Same Dimension uses a secret algorithm to generate beautiful new colors.



E4B9BA



FFC4C6



E4CDB9



736768



B30004



330001

Inverse Universe

The Inverse Universe completely reimagines the original color for something new.



E4B9BA



FFC4C6



B9D0E4



736768



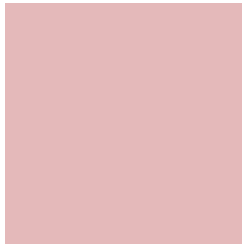
B30004



330001

Previews

White Background



This preview shows how the Hex color E4B9BA looks on a white background.

Color Contrast Check

Large Text (above 18pt) WCAG AA × Fail

Any Text WCAG AA × Fail

Large Text (above 18pt) WCAG AAA × Fail

Any Text WCAG AAA × Fail

Black Background



This preview shows how the Hex color E4B9BA looks on a black background.

Color Contrast Check

Large Text (above 18pt) WCAG AA ✓ Pass

Any Text WCAG AA ✓ Pass

Large Text (above 18pt) WCAG AAA ✓ Pass

Any Text WCAG AAA ✓ Pass

If you want to check with other color combinations, try the [Color Contrast Checker](#).

Hex E4B9BA Background



This preview shows how black text looks on a background with the Hex color E4B9BA.

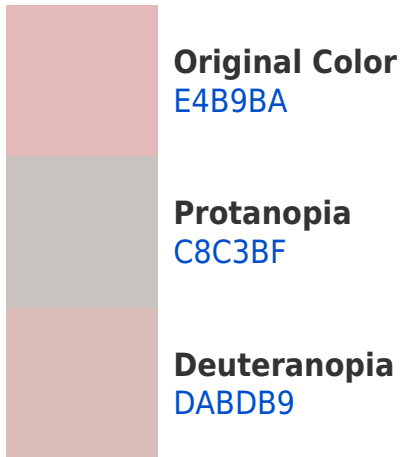


This preview shows how white text looks on a background with the Hex color E4B9BA.

Color Blindness Simulation

Color vision deficiency is a very complex topic, and I could not describe the different causes any better than Wikipedia does, so if you want to learn more, you should check out their [article about color blindness](#).

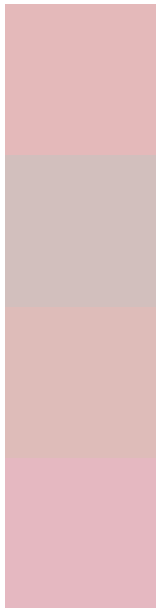
Dichromacy





Tritanopia
E5B7C5

Trichromacy



Original Color
E4B9BA

Protanomaly
D2BFBD

Deuteranomaly
DEBCB9

Tritanomaly
E5B8C1

Monochromacy



Original Color
E4B9BA

Achromatopsia
C6C6C6

Achromatomaly
D1C1C2

CSS Examples

Text

The CSS property to change the color of the text to Hex E4B9BA is called "color". The color property can be set on classes, ids or directly on the HTML element.

This example shows how text in the color #E4B9BA looks like.

```
.text, #text, p{  
    color:#E4B9BA  
}
```

If you want to add a text shadow in that color use the text-shadow property, you can generate a text shadow directly with our [CSS Text Shadow Generator](#).

Here you see how black text with a 4 pixel #E4B9BA colored shadow looks like.

```
.shadow{ text-shadow: 4px 4px 2px #E4B9BA
}
```

Border

The CSS property to change the border of an element to Hex E4B9BA is called "border". The border property can be set on classes, ids or directly on the HTML element.

This example shows the color as border, it can be applied via the CSS property "border" or "border-color".

```
.border, #border, table{ border:4px solid
#E4B9BA }
```

If only the border color should be changed use the property `border-color`.

```
.border{ border-color:#E4B9BA }
```

If you want to add a box shadow in that color use:

Here you see how a box with a 4 pixel #E4B9BA colored shadow looks like.

```
.boxshadow{ -moz-box-shadow:4px 4px 4px  
4px #E4B9BA; -webkit-box-shadow:4px 4px  
4px 4px #E4B9BA; box-shadow:4px 4px 4px  
4px #E4B9BA }
```

Background

The CSS property to change the background color of an element to Hex E4B9BA is called "background". The background property can be set on classes, ids or directly on the HTML element.

```
.background, #background, body{  
background:#E4B9BA }
```

If only the background color should be changed can be used:

```
.background{ background-color:#E4B9BA }
```

This example shows the color as background, it is applied via the CSS property "background".

To optimize and compress your CSS code, you can use our [online CSS compressor and optimizer](#) based on csstidy. If you want to create a linear or radial gradient as background or border, check our [CSS Gradient Generator](#).

Hey! You found this booklet interesting? Support Converting Colors with the new Membership Option!

The pro membership hides all ads, plus gives you double the colors in the color bucket, and more awesome pro features!

[Learn more, Memberships starting at \\$2.50/m!](#)

**Follow me
on Twitter!**

@ConvertingColor