

# Converting Colors

Hex(E4BB94)

Have a look what the booklet for  
Hex(E4BB94) contains.

<b>Hex(E4BB94)</b> .....	3
<i><b>Conversions</b></i> .....	4
<i><b>Details</b></i> .....	6
<i><b>Harmonies</b></i> .....	11
<i><b>Previews</b></i> .....	23
<i><b>Color Blindness Simulation</b></i> .....	26
<i><b>CSS Examples</b></i> .....	29

**Color**

**Hex(E4BB94)**

# Conversions

## Conversions Part 1

<b>Format</b>	<b>Color</b>
Hex	E4BB94
RGB	228, 187, 148
RGB Percent	89%, 73%, 58%
CMY	0.1059, 0.2667, 0.4196
CMYK	0.00, 0.18, 0.35, 0.11
HSL	29°, 60%, 74%
HSV	29°, 35%, 89%
XYZ	55.1105, 54.1727, 35.5687
YIQ	194.8130, 36.9550, -3.4370

# Conversions

## Conversions Part 2

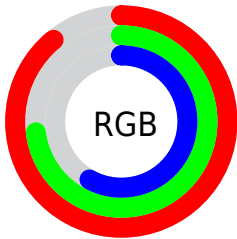
Format	Color
R <sub>Y</sub> B	228, 224, 148
Decimal	14990228
CIE Lab	78.56, 9.34, 25.30
CIE LCh	79, 26.965, 69.737
Yxy	54.1727, 0.3805, 0.3740
Android (android.graphics.Color)	4293180308 (0xFFE4BB94)
YUV	194.8130, -23.0788, 29.1050
Hunter-Lab	73.6021, 4.8504, 22.8692

# Details

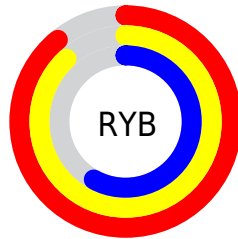
The Hex color **E4BB94** is a light color, and the websafe version is hex **FFCC99**. A complement of this color would be **94BDE4**, and the grayscale version is **C3C3C3**.

A 20% lighter version of the original color is **FFF3CA**, and **AB8661** is the 20% darker color. If you saturate the color by 10%, you get **E4AF7D**, and if you desaturate by 10%, it is **E4C7AB**.

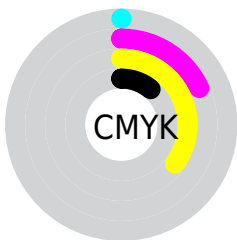
# Distribution



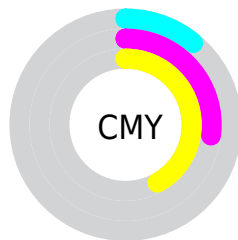
- Red (89%)
- Green (73%)
- Blue (58%)



- Red (89%)
- Yellow (88%)
- Blue (58%)



- Cyan (0%)
- Magenta (18%)
- Yellow (35%)
- Black (11%)



- Cyan (11%)
- Magenta (27%)
- Yellow (42%)

# Brightness & Saturation Gradients

These gradients show how the Hex color E4BB94 changes by changing the brightness by 10 percent. The first figure shows a shift by +10% for each color and the second figure -10%.

Similar to the brightness gradients but the following saturation gradients show a change of the Hex color E4BB94 by changing the saturation by 10% instead.



 E4BB94

 E4BB94

FFFFFF

 C7A07A

 FFF3CA

 AB8661

 FFFF66


 906D49

 755432

 5B3D1C

 422704

 2A1300

 080000

 000000

 E4BB94

 E4BB94

 E4AF7D

 E4C7AB

 E4A466

 E4D2C2

 E49850

 E4DED8

 E48C39

 E4EAEF

 E48122

 E4F5FF

 E4750B

 E4FFFF

 E46F00

# Harmonies

## Analogous

The Analogous color harmony consists of three colors that are next to each other on the color wheel.



F3B4A3



E4BB94



CDC391

# Triad

The Triadic color harmony groups three colors that are evenly spaced from another and form a triangle on the color wheel.



E4BB94



7FD1CA



D1B9E9

# Complementary

The Complementary color scheme is a pair of colors which are on the opposite of each other on the color wheel.



E4BB94



94BDE4

# Split Complementary

Split-complementary colors differ from the complementary color scheme. The scheme consists of three colors, the original color and two neighbors of the complement color.



AFC2F3



E4BB94



7ACFE2

# Square

The Square scheme is like the rectangle color scheme, but the four colors are evenly spaced on the color wheel.



E4BB94



94CFB0



8ECAF1



E9B2D4

# Rectangle

The Rectangle color scheme consists of four colors that form a rectangle on the color wheel.



E4BB94



BAC896



8ECAF1



C6BCEE

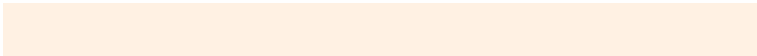


# Sweetspot

The Sweet Spot groups the original color and five complimentary colors.



E4BB94



FFF1E3



E494BD



80776F



000000



808080



# Same Dimension

The Same Dimension uses a secret algorithm to generate beautiful new colors.



E4BB94



FFC894



E4E394



736D67



B35700



331900

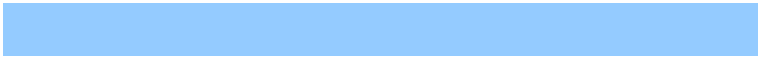


# Inverse Universe

The Inverse Universe completely reimagines the original color for something new.



94BDE4



94CBFF



9495E4



676D73



005BB3

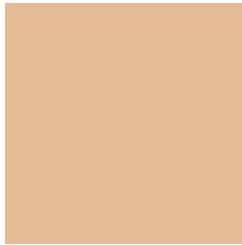


001A33



# Previews

## White Background



This preview shows how the Hex color E4BB94 looks on a white background.

## Color Contrast Check

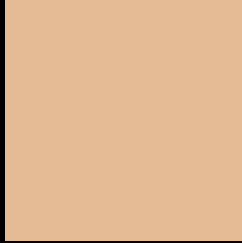
Large Text (above 18pt) WCAG AA × Fail

Any Text WCAG AA × Fail

Large Text (above 18pt) WCAG AAA × Fail

Any Text WCAG AAA × Fail

# Black Background



This preview shows how the Hex color E4BB94 looks on a black background.

## Color Contrast Check

Large Text (above 18pt) WCAG AA ✓ Pass

Any Text WCAG AA ✓ Pass

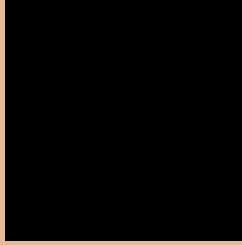
Large Text (above 18pt) WCAG AAA ✓ Pass

Any Text WCAG AAA ✓ Pass

If you want to check with other color combinations, try the [Color Contrast Checker](#).



## Hex E4BB94 Background



This preview shows how black text looks on a background with the Hex color E4BB94.



This preview shows how white text looks on a background with the Hex color E4BB94.

# Color Blindness Simulation

Color vision deficiency is a very complex topic, and I could not describe the different causes any better than Wikipedia does, so if you want to learn more, you should check out their [article about color blindness](#).

## Dichromacy





**Tritanopia**  
E9B5C3

# Trichromacy



# Monochromacy



# CSS Examples

## Text

The CSS property to change the color of the text to Hex E4BB94 is called "color". The color property can be set on classes, ids or directly on the HTML element.

This example shows how text in the color #E4BB94 looks like.

```
.text, #text, p{  
    color:#E4BB94  
}
```

If you want to add a text shadow in that color use the text-shadow property, you can generate a text shadow directly with our [CSS Text Shadow Generator](#).

Here you see how black text with a 4 pixel #E4BB94 colored shadow looks like.

```
.shadow{ text-shadow: 4px 4px 2px #E4BB94
}
```

## Border

The CSS property to change the border of an element to Hex E4BB94 is called "border". The border property can be set on classes, ids or directly on the HTML element.

This example shows the color as border, it can be applied via the CSS property "border" or "border-color".

```
.border, #border, table{ border:4px solid
#E4BB94 }
```

If only the border color should be changed use the property `border-color`.

```
.border{ border-color:#E4BB94 }
```

If you want to add a box shadow in that color use:

Here you see how a box with a 4 pixel #E4BB94 colored shadow looks like.

```
.boxshadow{ -moz-box-shadow:4px 4px 4px  
4px #E4BB94; -webkit-box-shadow:4px 4px  
4px 4px #E4BB94; box-shadow:4px 4px 4px  
4px #E4BB94 }
```

# Background

The CSS property to change the background color of an element to Hex E4BB94 is called "background". The background property can be set on classes, ids or directly on the HTML element.

```
.background, #background, body{  
background:#E4BB94 }
```

If only the background color should be changed can be used:

```
.background{ background-color:#E4BB94 }
```

This example shows the color as background, it is applied via the CSS property "background".

To optimize and compress your CSS code, you can use our [online CSS compressor and optimizer](#) based on csstidy. If you want to create a linear or radial gradient as background or border, check our [CSS Gradient Generator](#).



Hey! You found this booklet interesting? Support Converting Colors with the new Membership Option!

The pro membership hides all ads, plus gives you double the colors in the color bucket, and more awesome pro features!

**[Learn more, Memberships starting at \\$2.50/m!](#)**

**Follow me  
on Twitter!**

@ConvertingColor