

Converting Colors

Hex(E4BBF6)

Have a look what the booklet for
Hex(E4BBF6) contains.

Hex(E4BBF6)	3
<i>Conversions</i>	4
<i>Details</i>	6
<i>Harmonies</i>	11
<i>Previews</i>	23
<i>Color Blindness Simulation</i>	26
<i>CSS Examples</i>	29

Color

Hex(E4BBF6)

Conversions

Conversions Part 1

Format	Color
Hex	E4BBF6
RGB	228, 187, 246
RGB Percent	89%, 73%, 96%
CMY	0.1059, 0.2667, 0.0353
CMYK	0.07, 0.24, 0.00, 0.04
HSL	282°, 77%, 85%
HSV	282°, 24%, 96%
XYZ	66.3998, 58.6884, 95.0171
YIQ	205.9850, 5.4970, 27.0410

Conversions

Conversions Part 2

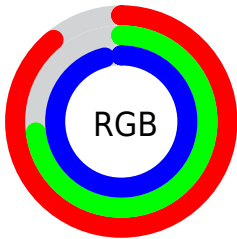
Format	Color
R _Y B	228, 187, 246
Decimal	14990326
CIE Lab	81.12, 25.03, -23.67
CIE LCh	81, 34.456, 316.601
Yxy	58.6884, 0.3017, 0.2666
Android (android.graphics.Color)	4293180406 (0xFFE4BBF6)
YUV	205.9850, 19.7274, 19.3072
Hunter-Lab	76.6084, 20.6490, -19.9113

Details

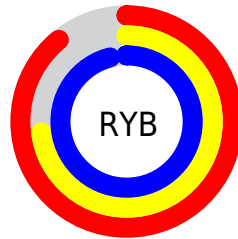
The Hex color **E4BBF6** is a light color, and the websafe version is hex **FFCCFF**. A complement of this color would be **CDF6BB**, and the grayscale version is **CECECE**.

A 20% lighter version of the original color is **FFF3FF**, and **AC85BE** is the 20% darker color. If you saturate the color by 10%, you get **DCA2F6**, and if you desaturate by 10%, it is **ECD4F6**.

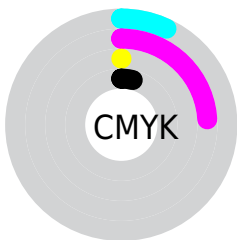
Distribution



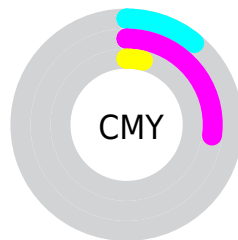
- Red (89%)
- Green (73%)
- Blue (96%)



- Red (89%)
- Yellow (73%)
- Blue (96%)



- Cyan (7%)
- Magenta (24%)
- Yellow (0%)
- Black (4%)



- Cyan (11%)
- Magenta (27%)
- Yellow (4%)

Brightness & Saturation Gradients

These gradients show how the Hex color E4BBF6 changes by changing the brightness by 10 percent. The first figure shows a shift by +10% for each color and the second figure -10%.

Similar to the brightness gradients but the following saturation gradients show a change of the Hex color E4BBF6 by changing the saturation by 10% instead.

 E4BBF6

FFFFFF

 FFF3FF

 E4BBF6

 C8A0D9

 AC85BE

 916CA2

 775388

 5E3C6F

 452556

 2E0F3E

 1C0029

 000112

 E4BBF6

 E4BBF6

 DCA2F6

 ECD4F6

 D58AF6

 F3ECF6

 CD71F6

 FBFFF6

 C659F6

 FFFFF6

 BE40F6

 B727F6

 AF0FF6

 AB00F6

Harmonies

Analogous

The Analogous color harmony consists of three colors that are next to each other on the color wheel.



BAC6FF



E4BBF6



FFB3D9

Triad

The Triadic color harmony groups three colors that are evenly spaced from another and form a triangle on the color wheel.



E4BBF6



EDC28B



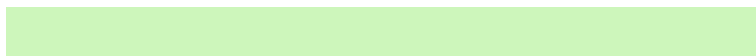
66DBDB

Complementary

The Complementary color scheme is a pair of colors which are on the opposite of each other on the color wheel.



E4BBF6



CDF6BB

Split Complementary

Split-complementary colors differ from the complementary color scheme. The scheme consists of three colors, the original color and two neighbors of the complement color.



84DAB9



E4BBF6



CECD8B

Square

The Square scheme is like the rectangle color scheme, but the four colors are evenly spaced on the color wheel.



E4BBF6



FFB89C



A9D59C



66D8F7

Rectangle

The Rectangle color scheme consists of four colors that form a rectangle on the color wheel.



E4BBF6



FFB1C3



A9D59C



6EDBD0

Sweetspot

The Sweet Spot groups the original color and five complimentary colors.



E4BBF6



FAEDFF



BBCEF6



7C7580



000000



808080

Same Dimension

The Same Dimension uses a secret algorithm to generate beautiful new colors.



E4BBF6



E8B5FF



F6BBEB



776E7A



8100BA



29003B

Inverse Universe

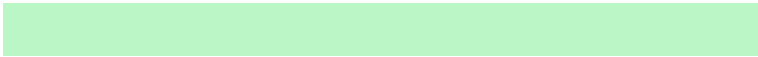
The Inverse Universe completely reimagines the original color for something new.



F6BBCD



FFB5CC



BBF6C6



7A6E72



BA0039



3B0012

Previews

White Background



This preview shows how the Hex color E4BBF6 looks on a white background.

Color Contrast Check

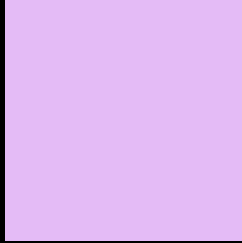
Large Text (above 18pt) WCAG AA × Fail

Any Text WCAG AA × Fail

Large Text (above 18pt) WCAG AAA × Fail

Any Text WCAG AAA × Fail

Black Background



This preview shows how the Hex color E4BBF6 looks on a black background.

Color Contrast Check

Large Text (above 18pt) WCAG AA ✓ Pass

Any Text WCAG AA ✓ Pass

Large Text (above 18pt) WCAG AAA ✓ Pass

Any Text WCAG AAA ✓ Pass

If you want to check with other color combinations, try the [Color Contrast Checker](#).

Hex E4BBF6 Background



This preview shows how black text looks on a background with the Hex color E4BBF6.

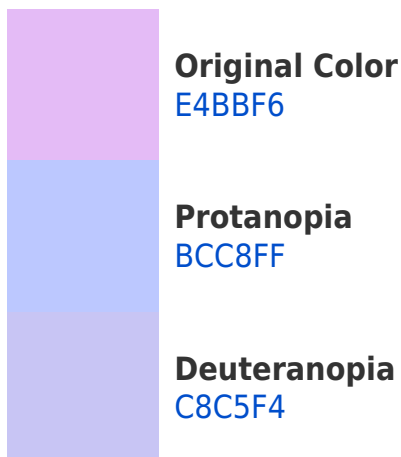


This preview shows how white text looks on a background with the Hex color E4BBF6.

Color Blindness Simulation

Color vision deficiency is a very complex topic, and I could not describe the different causes any better than Wikipedia does, so if you want to learn more, you should check out their [article about color blindness](#).

Dichromacy





Tritanopia
DEC2D1

Trichromacy



Original Color
E4BBF6



Protanomaly
CBC3FC



Deuteranomaly
D2C1F5

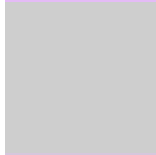


Tritanomaly
E0BFDE

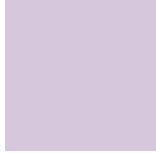
Monochromacy



Original Color
E4BBF6



Achromatopsia
CECECE



Achromatomaly
D6C7DD

CSS Examples

Text

The CSS property to change the color of the text to Hex E4BBF6 is called "color". The color property can be set on classes, ids or directly on the HTML element.

This example shows how text in the color #E4BBF6 looks like.

```
.text, #text, p{  
    color:#E4BBF6  
}
```

If you want to add a text shadow in that color use the text-shadow property, you can generate a text shadow directly with our [CSS Text Shadow Generator](#).

Here you see how black text with a 4 pixel #E4BBF6 colored shadow looks like.

```
.shadow{ text-shadow: 4px 4px 2px #E4BBF6
}
```

Border

The CSS property to change the border of an element to Hex E4BBF6 is called "border". The border property can be set on classes, ids or directly on the HTML element.

This example shows the color as border, it can be applied via the CSS property "border" or "border-color".

```
.border, #border, table{ border:4px solid
#E4BBF6 }
```

If only the border color should be changed use the property `border-color`.

```
.border{ border-color:#E4BBF6 }
```

If you want to add a box shadow in that color use:

Here you see how a box with a 4 pixel #E4BBF6 colored shadow looks like.

```
.boxshadow{ -moz-box-shadow:4px 4px 4px  
4px #E4BBF6; -webkit-box-shadow:4px 4px  
4px 4px #E4BBF6; box-shadow:4px 4px 4px  
4px #E4BBF6 }
```

Background

The CSS property to change the background color of an element to Hex E4BBF6 is called "background". The background property can be set on classes, ids or directly on the HTML element.

```
.background, #background, body{  
background:#E4BBF6 }
```

If only the background color should be changed can be used:

```
.background{ background-color:#E4BBF6 }
```

This example shows the color as background, it is applied via the CSS property "background".

To optimize and compress your CSS code, you can use our [online CSS compressor and optimizer](#) based on csstidy. If you want to create a linear or radial gradient as background or border, check our [CSS Gradient Generator](#).

Hey! You found this booklet interesting? Support Converting Colors with the new Membership Option!

The pro membership hides all ads, plus gives you double the colors in the color bucket, and more awesome pro features!

[Learn more, Memberships starting at \\$2.50/m!](#)

**Follow me
on Twitter!**

@ConvertingColor