

# Converting Colors

Hex(E4BEA6)

Have a look what the booklet for  
Hex(E4BEA6) contains.

<b>Hex(E4BEA6)</b> .....	3
<i><b>Conversions</b></i> .....	4
<i><b>Details</b></i> .....	6
<i><b>Harmonies</b></i> .....	11
<i><b>Previews</b></i> .....	23
<i><b>Color Blindness Simulation</b></i> .....	26
<i><b>CSS Examples</b></i> .....	29

**Color**

**Hex(E4BEA6)**

# Conversions

## Conversions Part 1

Format	Color
Hex	E4BEA6
RGB	228, 190, 166
RGB Percent	89%, 75%, 65%
CMY	0.1059, 0.2549, 0.3490
CMYK	0.00, 0.17, 0.27, 0.11
HSL	23°, 53%, 77%
HSV	23°, 27%, 89%
XYZ	57.2913, 56.0741, 43.8802
YIQ	198.6260, 30.3520, 0.5920

# Conversions

## Conversions Part 2

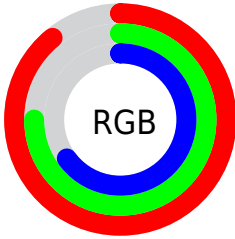
<b>Format</b>	<b>Color</b>
<b>R<sub>YB</sub></b>	228, 205, 166
Decimal	14991014
CIE <sub>Lab</sub>	79.66, 10.05, 17.19
CIE <sub>LCh</sub>	80, 19.918, 59.686
Yxy	56.0741, 0.3643, 0.3566
Android (android.graphics.Color)	4293181094 (0xFFE4BEA6)
YUV	198.6260, -16.0846, 25.7610
Hunter-Lab	74.8826, 5.5224, 17.6747

# Details

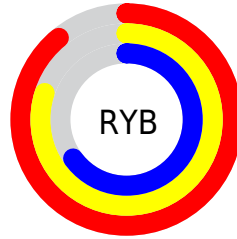
The Hex color **E4BEA6** is a light color, and the websafe version is hex **FFCCCC**. A complement of this color would be **A6CCE4**, and the grayscale version is **C7C7C7**.

A 20% lighter version of the original color is **FFF6DD**, and **AC8972** is the 20% darker color. If you saturate the color by 10%, you get **E4B08F**, and if you desaturate by 10%, it is **E4CCBD**.

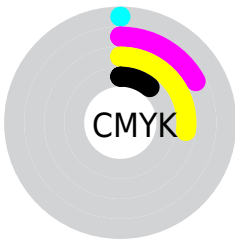
# Distribution



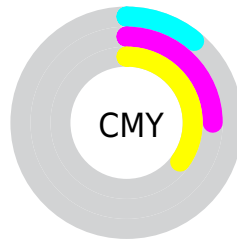
- Red (89%)
- Green (75%)
- Blue (65%)



- Red (89%)
- Yellow (80%)
- Blue (65%)



- Cyan (0%)
- Magenta (17%)
- Yellow (27%)
- Black (11%)



- Cyan (11%)
- Magenta (25%)
- Yellow (35%)

# Brightness & Saturation Gradients

These gradients show how the Hex color E4BEA6 changes by changing the brightness by 10 percent. The first figure shows a shift by +10% for each color and the second figure -10%.

Similar to the brightness gradients but the following saturation gradients show a change of the Hex color E4BEA6 by changing the saturation by 10% instead.



 E4BEA6

 E4BEA6

FFFFFF

 C8A38C

 FFF6DD

 AC8972

 FFFFFA

 916F59

 765742

 5D3F2C

 442917

 2D1500

 140000

 000000

 E4BEA6

 E4BEA6

 E4B08F

 E4CCBD

 E4A278

 E4DAD4

 E49462

 E4E8EA

 E4864B

 E4F6FF

 E47834

 E4FFFF

 E46A1D

 E45C06

 E45800

# Harmonies

## Analogous

The Analogous color harmony consists of three colors that are next to each other on the color wheel.



ECBAB4



E4BEA6



D4C4A0

# Triad

The Triadic color harmony groups three colors that are evenly spaced from another and form a triangle on the color wheel.



E4BEA6



9AD0C5



C9C1E6

# Complementary

The Complementary color scheme is a pair of colors which are on the opposite of each other on the color wheel.



E4BEA6



A6CCE4

# Split Complementary

Split-complementary colors differ from the complementary color scheme. The scheme consists of three colors, the original color and two neighbors of the complement color.



B0C7EA



E4BEA6



94D0D7

# Square

The Square scheme is like the rectangle color scheme, but the four colors are evenly spaced on the color wheel.



E4BEA6



ABCEB2



9CCCE5



DEBBD8

# Rectangle

The Rectangle color scheme consists of four colors that form a rectangle on the color wheel.



E4BEA6



C7C8A2



9CCCE5



C1C3E8



# Sweetspot

The Sweet Spot groups the original color and five complimentary colors.



E4BEA6



FFF2EB



E4A6CC



807873



000000



808080



# Same Dimension

The Same Dimension uses a secret algorithm to generate beautiful new colors.



E4BEA6



FFCBAB



E4DDA6



736C67



B34500



331400

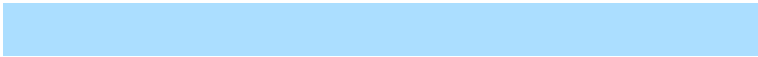


# Inverse Universe

The Inverse Universe completely reimagines the original color for something new.



A6CCE4



ABDEFF



A6ADE4



676E73



006DB3

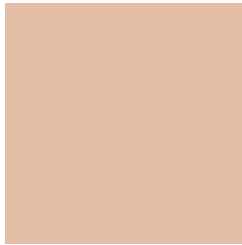


001F33



# Previews

## White Background



This preview shows how the Hex color E4BEA6 looks on a white background.

## Color Contrast Check

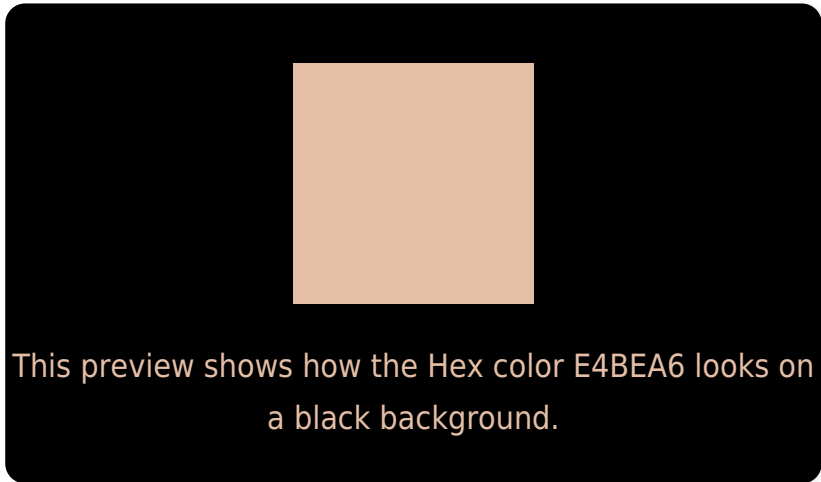
Large Text (above 18pt) WCAG AA × Fail

Any Text WCAG AA × Fail

Large Text (above 18pt) WCAG AAA × Fail

Any Text WCAG AAA × Fail

# Black Background



## Color Contrast Check

Large Text (above 18pt) WCAG AA ✓ Pass

Any Text WCAG AA ✓ Pass

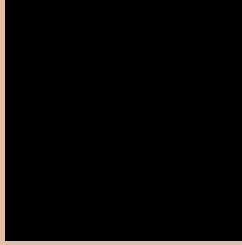
Large Text (above 18pt) WCAG AAA ✓ Pass

Any Text WCAG AAA ✓ Pass

If you want to check with other color combinations, try the [Color Contrast Checker](#).



## Hex E4BEA6 Background



This preview shows how black text looks on a background with the Hex color E4BEA6.



This preview shows how white text looks on a background with the Hex color E4BEA6.

# Color Blindness Simulation

Color vision deficiency is a very complex topic, and I could not describe the different causes any better than Wikipedia does, so if you want to learn more, you should check out their [article about color blindness](#).

## Dichromacy



**Original Color**  
E4BEA6

**Protanopia**  
D0C5AA

**Deuteranopia**  
E4BEA6

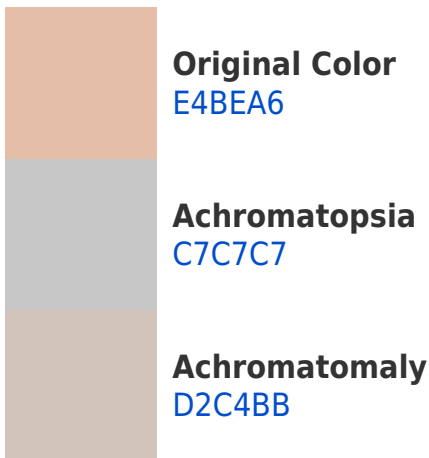


**Tritanopia**  
E8B9C8

# Trichromacy



# Monochromacy



# CSS Examples

## Text

The CSS property to change the color of the text to Hex E4BEA6 is called "color". The color property can be set on classes, ids or directly on the HTML element.

This example shows how text in the color #E4BEA6 looks like.

```
.text, #text, p{  
    color:#E4BEA6  
}
```

If you want to add a text shadow in that color use the text-shadow property, you can generate a text shadow directly with our [CSS Text Shadow Generator](#).

Here you see how black text with a 4 pixel #E4BEA6 colored shadow looks like.

```
.shadow{ text-shadow: 4px 4px 2px #E4BEA6
}
```

## Border

The CSS property to change the border of an element to Hex E4BEA6 is called "border". The border property can be set on classes, ids or directly on the HTML element.

This example shows the color as border, it can be applied via the CSS property "border" or "border-color".

```
.border, #border, table{ border:4px solid
#E4BEA6 }
```

If only the border color should be changed use the property `border-color`.

```
.border{ border-color:#E4BEA6 }
```

If you want to add a box shadow in that color use:

Here you see how a box with a 4 pixel #E4BEA6 colored shadow looks like.

```
.boxshadow{ -moz-box-shadow:4px 4px 4px  
4px #E4BEA6; -webkit-box-shadow:4px 4px  
4px 4px #E4BEA6; box-shadow:4px 4px 4px  
4px #E4BEA6 }
```

# Background

The CSS property to change the background color of an element to Hex E4BEA6 is called "background". The background property can be set on classes, ids or directly on the HTML element.

```
.background, #background, body{  
background:#E4BEA6 }
```

If only the background color should be changed can be used:

```
.background{ background-color:#E4BEA6 }
```

This example shows the color as background, it is applied via the CSS property "background".

To optimize and compress your CSS code, you can use our [online CSS compressor and optimizer](#) based on csstidy. If you want to create a linear or radial gradient as background or border, check our [CSS Gradient Generator](#).



Hey! You found this booklet interesting? Support Converting Colors with the new Membership Option!

The pro membership hides all ads, plus gives you double the colors in the color bucket, and more awesome pro features!

**[Learn more, Memberships starting at \\$2.50/m!](#)**

**Follow me  
on Twitter!**

@ConvertingColor