

Converting Colors

Hex(E4BEBC)

Have a look what the booklet for
Hex(E4BEBC) contains.

Hex(E4BEBC)	3
<i>Conversions</i>	4
<i>Details</i>	6
<i>Harmonies</i>	11
<i>Previews</i>	23
<i>Color Blindness Simulation</i>	26
<i>CSS Examples</i>	29

Color

Hex(E4BEBC)

Conversions

Conversions Part 1

Format	Color
Hex	E4BEBC
RGB	228, 190, 188
RGB Percent	89%, 75%, 74%
CMY	0.1059, 0.2549, 0.2627
CMYK	0.00, 0.17, 0.18, 0.11
HSL	3°, 43%, 82%
HSV	3°, 18%, 89%
XYZ	59.4855, 56.9517, 55.4345
YIQ	201.1340, 23.2900, 7.4340

Conversions

Conversions Part 2

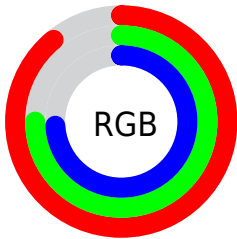
Format	Color
R _Y B	228, 190, 188
Decimal	14991036
CIE Lab	80.15, 13.24, 6.08
CIE LCh	80, 14.568, 24.670
Yxy	56.9517, 0.3461, 0.3314
Android (android.graphics.Color)	4293181116 (0xFFE4BEBC)
YUV	201.1340, -6.4751, 23.5615
Hunter-Lab	75.4664, 8.6343, 9.2744

Details

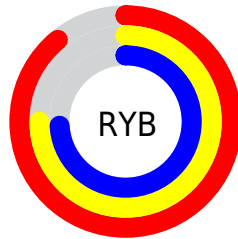
The Hex color **E4BEBC** is a light color, and the websafe version is hex **FFCCCC**. A complement of this color would be **BCE2E4**, and the grayscale version is **C9C9C9**.

A 20% lighter version of the original color is **FFF6F4**, and **AC8987** is the 20% darker color. If you saturate the color by 10%, you get **E4A8A5**, and if you desaturate by 10%, it is **E4D4D3**.

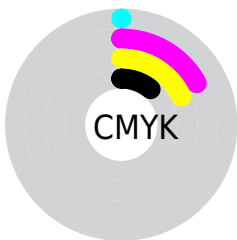
Distribution



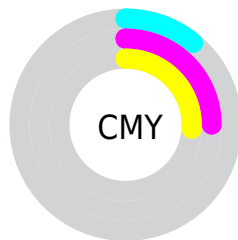
- Red (89%)
- Green (75%)
- Blue (74%)



- Red (89%)
- Yellow (75%)
- Blue (74%)



- Cyan (0%)
- Magenta (17%)
- Yellow (18%)
- Black (11%)



- Cyan (11%)
- Magenta (25%)
- Yellow (26%)

Brightness & Saturation Gradients

These gradients show how the Hex color E4BEBC changes by changing the brightness by 10 percent. The first figure shows a shift by +10% for each color and the second figure -10%.

Similar to the brightness gradients but the following saturation gradients show a change of the Hex color E4BEBC by changing the saturation by 10% instead.

 E4BEBC

FFFFFF

 FFF6F4

 E4BEBC

 C8A3A1

 AC8987

 916F6E

 775755

 5E3F3E

 462928

 2E1414

 1B0001

 000000

 E4BEBC

 E4BEBC

 E4A8A5

 E4D4D3

 E4938E

 E4E9EA

 E47D78

 E4FFFF

 E46761

 E4524A

 E43C33

 E4261C

 E41106

 E40B00

Harmonies

Analogous

The Analogous color harmony consists of three colors that are next to each other on the color wheel.



E1BECA



E4BEBC



DFC1B1

Triad

The Triadic color harmony groups three colors that are evenly spaced from another and form a triangle on the color wheel.



E4BEBC



B6CDB7



B5C9E1

Complementary

The Complementary color scheme is a pair of colors which are on the opposite of each other on the color wheel.



E4BEBC



BCE2E4

Split Complementary

Split-complementary colors differ from the complementary color scheme. The scheme consists of three colors, the original color and two neighbors of the complement color.



A8CCDC



E4BEBC



A9CFC4

Square

The Square scheme is like the rectangle color scheme, but the four colors are evenly spaced on the color wheel.



E4BEBC



C6C9AE



A4CFD2



C6C4DF

Rectangle

The Rectangle color scheme consists of four colors that form a rectangle on the color wheel.



E4BEBC



D9C3AD



A4CFD2



B0CAE1

Sweetspot

The Sweet Spot groups the original color and five complimentary colors.



E4BEBC



FFF3F2



E4BCE2



807878



000000



808080

Same Dimension

The Same Dimension uses a secret algorithm to generate beautiful new colors.



E4BEBC



FFCCC9



E4D1BC



736867



B30900



330300

Inverse Universe

The Inverse Universe completely reimagines the original color for something new.



BCE2E4



C9FCFF



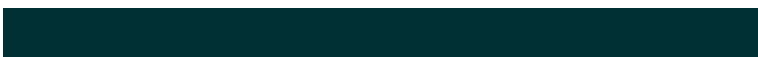
BCCEE4



677273



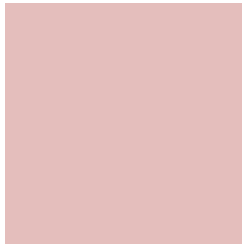
00AAB3



003033

Previews

White Background



This preview shows how the Hex color E4BEBC looks on a white background.

Color Contrast Check

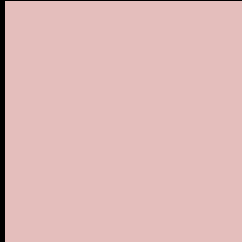
Large Text (above 18pt) WCAG AA × Fail

Any Text WCAG AA × Fail

Large Text (above 18pt) WCAG AAA × Fail

Any Text WCAG AAA × Fail

Black Background



This preview shows how the Hex color E4BEBC looks on a black background.

Color Contrast Check

Large Text (above 18pt) WCAG AA ✓ Pass

Any Text WCAG AA ✓ Pass

Large Text (above 18pt) WCAG AAA ✓ Pass

Any Text WCAG AAA ✓ Pass

If you want to check with other color combinations, try the [Color Contrast Checker](#).

Hex E4BEBC Background



This preview shows how black text looks on a background with the Hex color E4BEBC.



This preview shows how white text looks on a background with the Hex color E4BEBC.

Color Blindness Simulation

Color vision deficiency is a very complex topic, and I could not describe the different causes any better than Wikipedia does, so if you want to learn more, you should check out their [article about color blindness](#).

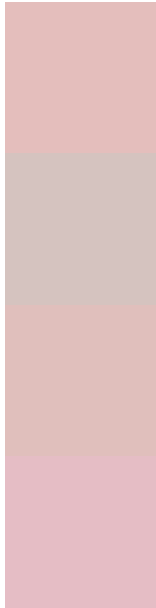
Dichromacy





Tritanopia
E6BCCA

Trichromacy



Original Color
E4BEBC

Protanomaly
D5C3BF

Deuteranomaly
E0BFBC

Tritanomaly
E5BDC5

Monochromacy



Original Color
E4BEBC

Achromatopsia
C9C9C9

Achromatomaly
D3C5C4

CSS Examples

Text

The CSS property to change the color of the text to Hex E4BEBC is called "color". The color property can be set on classes, ids or directly on the HTML element.

This example shows how text in the color #E4BEBC looks like.

```
.text, #text, p{  
    color:#E4BEBC  
}
```

If you want to add a text shadow in that color use the text-shadow property, you can generate a text shadow directly with our [CSS Text Shadow Generator](#).

Here you see how black text with a 4 pixel #E4BEBC colored shadow looks like.

```
.shadow{ text-shadow: 4px 4px 2px #E4BEBC
}
```

Border

The CSS property to change the border of an element to Hex E4BEBC is called "border". The border property can be set on classes, ids or directly on the HTML element.

This example shows the color as border, it can be applied via the CSS property "border" or "border-color".

```
.border, #border, table{ border:4px solid
#E4BEBC }
```

If only the border color should be changed use the property `border-color`.

```
.border{ border-color:#E4BEBC }
```

If you want to add a box shadow in that color use:

Here you see how a box with a 4 pixel #E4BEBC colored shadow looks like.

```
.boxshadow{ -moz-box-shadow:4px 4px 4px  
4px #E4BEBC; -webkit-box-shadow:4px 4px  
4px 4px #E4BEBC; box-shadow:4px 4px 4px  
4px #E4BEBC }
```

Background

The CSS property to change the background color of an element to Hex E4BEBC is called "background". The background property can be set on classes, ids or directly on the HTML element.

```
.background, #background, body{  
background:#E4BEBC }
```

If only the background color should be changed can be used:

```
.background{ background-color:#E4BEBC }
```

This example shows the color as background, it is applied via the CSS property "background".

To optimize and compress your CSS code, you can use our [online CSS compressor and optimizer](#) based on csstidy. If you want to create a linear or radial gradient as background or border, check our [CSS Gradient Generator](#).

Hey! You found this booklet interesting? Support Converting Colors with the new Membership Option!

The pro membership hides all ads, plus gives you double the colors in the color bucket, and more awesome pro features!

[Learn more, Memberships starting at \\$2.50/m!](#)

**Follow me
on Twitter!**

@ConvertingColor