

Converting Colors

Hex(E4C0AD)

Have a look what the booklet for
Hex(E4C0AD) contains.

| | |
|--|----|
| Hex(E4C0AD) | 3 |
| <i>Conversions</i> | 4 |
| <i>Details</i> | 6 |
| <i>Harmonies</i> | 11 |
| <i>Previews</i> | 23 |
| <i>Color Blindness Simulation</i> | 26 |
| <i>CSS Examples</i> | 29 |

Color

Hex(E4C0AD)

Conversions

Conversions Part 1

| Format | Color |
|-------------|---------------------------|
| Hex | E4C0AD |
| RGB | 228, 192, 173 |
| RGB Percent | 89%, 75%, 68% |
| CMY | 0.1059, 0.2471, 0.3216 |
| CMYK | 0.00, 0.16, 0.24, 0.11 |
| HSL | 21°, 50%, 79% |
| HSV | 21°, 24%, 89% |
| XYZ | 58.3874, 57.2104, 47.5005 |
| YIQ | 200.5980, 27.5550, 1.7230 |

Conversions

Conversions Part 2

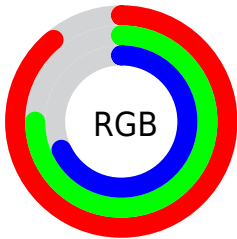
| Format | Color |
|-------------------------------------|--------------------------------|
| R _Y B | 228, 202, 173 |
| Decimal | 14991533 |
| CIE Lab | 80.30, 9.96, 14.35 |
| CIE LCh | 80, 17.466, 55.218 |
| Yxy | 57.2104, 0.3580, 0.3508 |
| Android (android.graphics.Color) | 4293181613 (0xFFE4C0AD) |
| YUV | 200.5980, -13.6058, 24.0316 |
| Hunter-Lab | 75.6375, 5.4249, 15.7120 |

Details

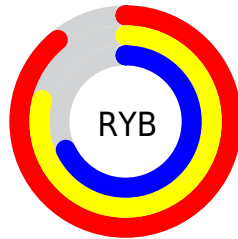
The Hex color **E4C0AD** is a light color, and the websafe version is hex **FFCCCC**. A complement of this color would be **ADD1E4**, and the grayscale version is **C9C9C9**.

A 20% lighter version of the original color is **FFF8E4**, and **AC8B79** is the 20% darker color. If you saturate the color by 10%, you get **E4B196**, and if you desaturate by 10%, it is **E4CFC4**.

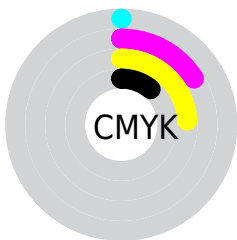
Distribution



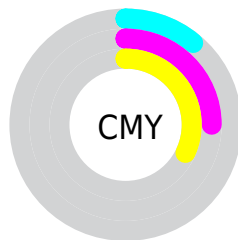
- Red (89%)
- Green (75%)
- Blue (68%)



- Red (89%)
- Yellow (79%)
- Blue (68%)



- Cyan (0%)
- Magenta (16%)
- Yellow (24%)
- Black (11%)



- Cyan (11%)
- Magenta (25%)
- Yellow (32%)

Brightness & Saturation Gradients

These gradients show how the Hex color E4C0AD changes by changing the brightness by 10 percent. The first figure shows a shift by +10% for each color and the second figure -10%.

Similar to the brightness gradients but the following saturation gradients show a change of the Hex color E4C0AD by changing the saturation by 10% instead.

 E4C0AD


FFFFFF

 FFF8E4

 E4C0AD

 C8A592

 AC8B79

 917160

 775948

 5D4132

 452B1C

 2E1603

 170000

 000000

 E4C0AD

 E4C0AD

 E4B196

 E4CFC4

 E4A27F

 E4DEDB

 E49369

 E4EDF1

 E48452

 E4FCFF

 E4753B

 E4FFFF

 E46624

 E4580D

 E44F00

Harmonies

Analogous

The Analogous color harmony consists of three colors that are next to each other on the color wheel.



EABDBA



E4C0AD



D7C5A7

Triad

The Triadic color harmony groups three colors that are evenly spaced from another and form a triangle on the color wheel.



E4C0AD



A3D1C4



C7C4E5

Complementary

The Complementary color scheme is a pair of colors which are on the opposite of each other on the color wheel.



E4C0AD



ADD1E4

Split Complementary

Split-complementary colors differ from the complementary color scheme. The scheme consists of three colors, the original color and two neighbors of the complement color.



B2C9E7



E4C0AD



9CD0D4

Square

The Square scheme is like the rectangle color scheme, but the four colors are evenly spaced on the color wheel.



E4C0AD



B3CEB4



A2CEE1



DABFDA

Rectangle

The Rectangle color scheme consists of four colors that form a rectangle on the color wheel.



E4C0AD



CBC9A8



A2CEE1



C0C6E6

Sweetspot

The Sweet Spot groups the original color and five complimentary colors.



E4C0AD



FFF3ED



E4ADD2



807975



000000



808080

Same Dimension

The Same Dimension uses a secret algorithm to generate beautiful new colors.



E4C0AD



FFCFB5



E4DBAD



736B67



B33E00



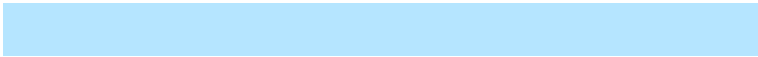
331200

Inverse Universe

The Inverse Universe completely reimagines the original color for something new.



ADD1E4



B5E5FF



ADB6E4



676F73



0075B3



002133

Previews

White Background



This preview shows how the Hex color E4C0AD looks on a white background.

Color Contrast Check

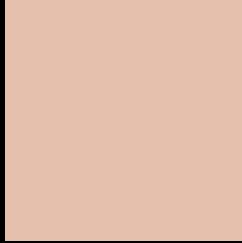
Large Text (above 18pt) WCAG AA × Fail

Any Text WCAG AA × Fail

Large Text (above 18pt) WCAG AAA × Fail

Any Text WCAG AAA × Fail

Black Background



This preview shows how the Hex color E4C0AD looks on a black background.

Color Contrast Check

Large Text (above 18pt) WCAG AA ✓ Pass

Any Text WCAG AA ✓ Pass

Large Text (above 18pt) WCAG AAA ✓ Pass

Any Text WCAG AAA ✓ Pass

If you want to check with other color combinations, try the [Color Contrast Checker](#).

Hex E4C0AD Background



This preview shows how black text looks on a background with the Hex color E4C0AD.

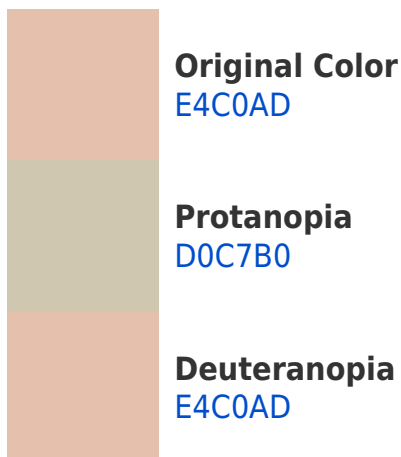


This preview shows how white text looks on a background with the Hex color E4C0AD.

Color Blindness Simulation

Color vision deficiency is a very complex topic, and I could not describe the different causes any better than Wikipedia does, so if you want to learn more, you should check out their [article about color blindness](#).

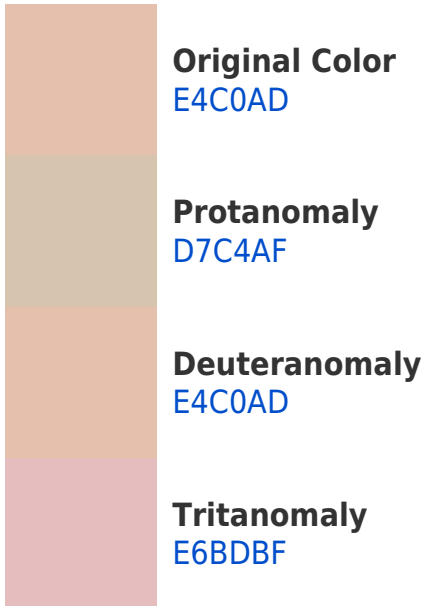
Dichromacy



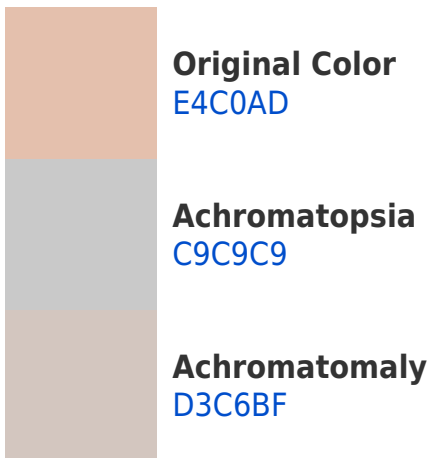


Tritanopia
E7BCCA

Trichromacy



Monochromacy



CSS Examples

Text

The CSS property to change the color of the text to Hex E4C0AD is called "color". The color property can be set on classes, ids or directly on the HTML element.

This example shows how text in the color #E4C0AD looks like.

```
.text, #text, p{  
    color:#E4C0AD  
}
```

If you want to add a text shadow in that color use the text-shadow property, you can generate a text shadow directly with our [CSS Text Shadow Generator](#).

Here you see how black text with a 4 pixel #E4C0AD colored shadow looks like.

```
.shadow{ text-shadow: 4px 4px 2px #E4C0AD
}
```

Border

The CSS property to change the border of an element to Hex E4C0AD is called "border". The border property can be set on classes, ids or directly on the HTML element.

This example shows the color as border, it can be applied via the CSS property "border" or "border-color".

```
.border, #border, table{ border:4px solid
#E4C0AD }
```

If only the border color should be changed use the property `border-color`.

```
.border{ border-color:#E4C0AD }
```

If you want to add a box shadow in that color use:

Here you see how a box with a 4 pixel #E4C0AD colored shadow looks like.

```
.boxshadow{ -moz-box-shadow:4px 4px 4px  
4px #E4C0AD; -webkit-box-shadow:4px 4px  
4px 4px #E4C0AD; box-shadow:4px 4px 4px  
4px #E4C0AD }
```

Background

The CSS property to change the background color of an element to Hex E4C0AD is called "background". The background property can be set on classes, ids or directly on the HTML element.

```
.background, #background, body{  
background:#E4C0AD }
```

If only the background color should be changed can be used:

```
.background{ background-color:#E4C0AD }
```

This example shows the color as background, it is applied via the CSS property "background".

To optimize and compress your CSS code, you can use our [online CSS compressor and optimizer](#) based on csstidy. If you want to create a linear or radial gradient as background or border, check our [CSS Gradient Generator](#).

Hey! You found this booklet interesting? Support Converting Colors with the new Membership Option!

The pro membership hides all ads, plus gives you double the colors in the color bucket, and more awesome pro features!

[Learn more, Memberships starting at \\$2.50/m!](#)

**Follow me
on Twitter!**

@ConvertingColor