

Converting Colors

Hex(E4C1B4)

Have a look what the booklet for
Hex(E4C1B4) contains.

Hex(E4C1B4)	3
<i>Conversions</i>	4
<i>Details</i>	6
<i>Harmonies</i>	11
<i>Previews</i>	23
<i>Color Blindness Simulation</i>	26
<i>CSS Examples</i>	29

Color

Hex(E4C1B4)

Conversions

Conversions Part 1

Format	Color
Hex	E4C1B4
RGB	228, 193, 180
RGB Percent	89%, 76%, 71%
CMY	0.1059, 0.2431, 0.2941
CMYK	0.00, 0.15, 0.21, 0.11
HSL	16°, 47%, 80%
HSV	16°, 21%, 89%
XYZ	59.3031, 57.9292, 51.2359
YIQ	201.9830, 25.0330, 3.3770

Conversions

Conversions Part 2

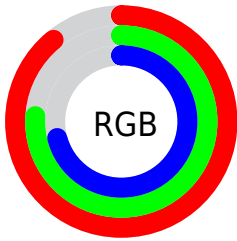
Format	Color
R _Y B	228, 198, 180
Decimal	14991796
CIE Lab	80.70, 10.44, 11.16
CIE LCh	81, 15.285, 46.906
Yxy	57.9292, 0.3520, 0.3439
Android (android.graphics.Color)	4293181876 (0xFFE4C1B4)
YUV	201.9830, -10.8376, 22.8169
Hunter-Lab	76.1112, 5.8860, 13.3656

Details

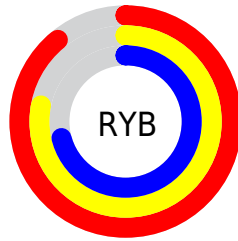
The Hex color **E4C1B4** is a light color, and the websafe version is hex **FFCCCC**. A complement of this color would be **B4D7E4**, and the grayscale version is **CACACA**.

A 20% lighter version of the original color is **FFF9EC**, and **AC8B7F** is the 20% darker color. If you saturate the color by 10%, you get **E4B09D**, and if you desaturate by 10%, it is **E4D2CB**.

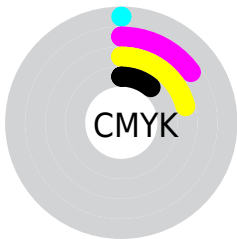
Distribution



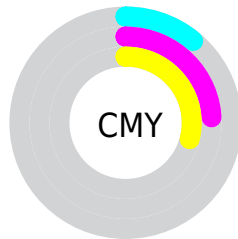
- Red (89%)
- Green (76%)
- Blue (71%)



- Red (89%)
- Yellow (78%)
- Blue (71%)



- Cyan (0%)
- Magenta (15%)
- Yellow (21%)
- Black (11%)



- Cyan (11%)
- Magenta (24%)
- Yellow (29%)

Brightness & Saturation Gradients

These gradients show how the Hex color E4C1B4 changes by changing the brightness by 10 percent. The first figure shows a shift by +10% for each color and the second figure -10%.

Similar to the brightness gradients but the following saturation gradients show a change of the Hex color E4C1B4 by changing the saturation by 10% instead.

 E4C1B4

 E4C1B4

FFFFFF

 C8A699

 FFF9EC

 AC8B7F

 917266

 77594E

 5E4237

 452C22

 2E170C

 190000

 000000

 E4C1B4

 E4C1B4

 E4B09D

 E4D2CB

 E4A086

 E4E2E2

 E48F70

 E4F3F8

 E47E59

 E4FFFF

 E46E42

 E45D2B

 E44D14

 E43E00

Harmonies

Analogous

The Analogous color harmony consists of three colors that are next to each other on the color wheel.



E7BFC1



E4C1B4



DAC5AD

Triad

The Triadic color harmony groups three colors that are evenly spaced from another and form a triangle on the color wheel.



E4C1B4



ACD0C1



C3C7E3

Complementary

The Complementary color scheme is a pair of colors which are on the opposite of each other on the color wheel.



E4C1B4



B4D7E4

Split Complementary

Split-complementary colors differ from the complementary color scheme. The scheme consists of three colors, the original color and two neighbors of the complement color.



B2CBE4



E4C1B4



A4D1D0

Square

The Square scheme is like the rectangle color scheme, but the four colors are evenly spaced on the color wheel.



E4C1B4



BBCEB4



A6CFDD



D5C2DC

Rectangle

The Rectangle color scheme consists of four colors that form a rectangle on the color wheel.



E4C1B4



D0C8AC



A6CFDD



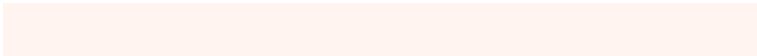
BDC8E4

Sweetspot

The Sweet Spot groups the original color and five complimentary colors.



E4C1B4



FFF4F0



E4B4D7



807977



000000



808080

Same Dimension

The Same Dimension uses a secret algorithm to generate beautiful new colors.



E4C1B4



FFD1BF



E4D9B4



736A67



B33000



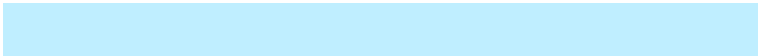
330E00

Inverse Universe

The Inverse Universe completely reimagines the original color for something new.



B4D7E4



BFEEFF



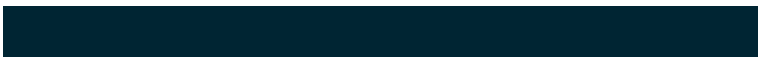
B4BFE4



677073



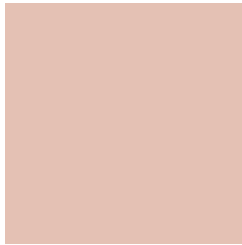
0082B3



002533

Previews

White Background



This preview shows how the Hex color E4C1B4 looks on a white background.

Color Contrast Check

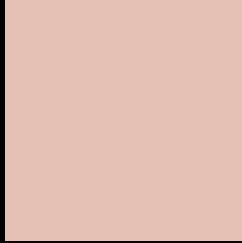
Large Text (above 18pt) WCAG AA × Fail

Any Text WCAG AA × Fail

Large Text (above 18pt) WCAG AAA × Fail

Any Text WCAG AAA × Fail

Black Background



This preview shows how the Hex color E4C1B4 looks on a black background.

Color Contrast Check

Large Text (above 18pt) WCAG AA ✓ Pass

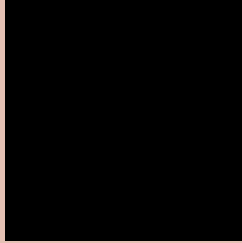
Any Text WCAG AA ✓ Pass

Large Text (above 18pt) WCAG AAA ✓ Pass

Any Text WCAG AAA ✓ Pass

If you want to check with other color combinations, try the [Color Contrast Checker](#).

Hex E4C1B4 Background



This preview shows how black text looks on a background with the Hex color E4C1B4.

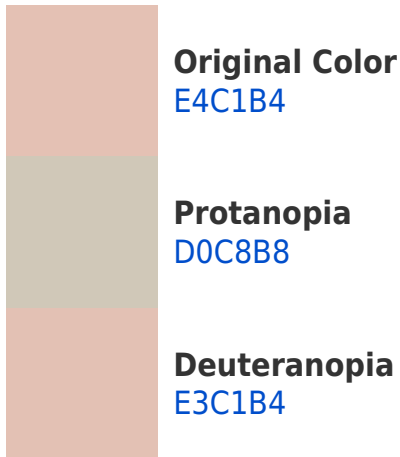


This preview shows how white text looks on a background with the Hex color E4C1B4.

Color Blindness Simulation

Color vision deficiency is a very complex topic, and I could not describe the different causes any better than Wikipedia does, so if you want to learn more, you should check out their [article about color blindness](#).

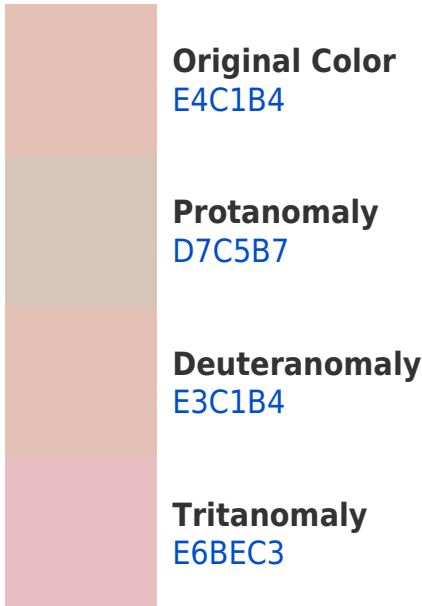
Dichromacy



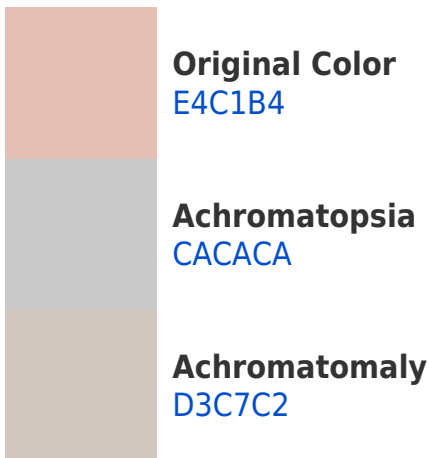


Tritanopia
E7BDCC

Trichromacy



Monochromacy



CSS Examples

Text

The CSS property to change the color of the text to Hex E4C1B4 is called "color". The color property can be set on classes, ids or directly on the HTML element.

This example shows how text in the color #E4C1B4 looks like.

```
.text, #text, p{  
    color:#E4C1B4  
}
```

If you want to add a text shadow in that color use the text-shadow property, you can generate a text shadow directly with our [CSS Text Shadow Generator](#).

Here you see how black text with a 4 pixel #E4C1B4 colored shadow looks like.

```
.shadow{ text-shadow: 4px 4px 2px #E4C1B4
}
```

Border

The CSS property to change the border of an element to Hex E4C1B4 is called "border". The border property can be set on classes, ids or directly on the HTML element.

This example shows the color as border, it can be applied via the CSS property "border" or "border-color".

```
.border, #border, table{ border:4px solid
#E4C1B4 }
```

If only the border color should be changed use the property `border-color`.

```
.border{ border-color:#E4C1B4 }
```

If you want to add a box shadow in that color use:

Here you see how a box with a 4 pixel #E4C1B4 colored shadow looks like.

```
.boxshadow{ -moz-box-shadow:4px 4px 4px  
4px #E4C1B4; -webkit-box-shadow:4px 4px  
4px 4px #E4C1B4; box-shadow:4px 4px 4px  
4px #E4C1B4 }
```

Background

The CSS property to change the background color of an element to Hex E4C1B4 is called "background". The background property can be set on classes, ids or directly on the HTML element.

```
.background, #background, body{  
background:#E4C1B4 }
```

If only the background color should be changed can be used:

```
.background{ background-color:#E4C1B4 }
```

This example shows the color as background, it is applied via the CSS property "background".

To optimize and compress your CSS code, you can use our [online CSS compressor and optimizer](#) based on csstidy. If you want to create a linear or radial gradient as background or border, check our [CSS Gradient Generator](#).

Hey! You found this booklet interesting? Support Converting Colors with the new Membership Option!

The pro membership hides all ads, plus gives you double the colors in the color bucket, and more awesome pro features!

[Learn more, Memberships starting at \\$2.50/m!](#)

**Follow me
on Twitter!**

@ConvertingColor