

Converting Colors

Hex(E4CBBF)

Have a look what the booklet for
Hex(E4CBBF) contains.

Hex(E4CBBF)	3
<i>Conversions</i>	4
<i>Details</i>	6
<i>Harmonies</i>	11
<i>Previews</i>	23
<i>Color Blindness Simulation</i>	26
<i>CSS Examples</i>	29

Color

Hex(E4CBBF)

Conversions

Conversions Part 1

Format	Color
Hex	E4CBBF
RGB	228, 203, 191
RGB Percent	89%, 80%, 75%
CMY	0.1059, 0.2039, 0.2510
CMYK	0.00, 0.11, 0.16, 0.11
HSL	19°, 41%, 82%
HSV	19°, 16%, 89%
XYZ	62.7548, 62.9674, 58.1366
YIQ	209.1070, 18.7520, 1.5680

Conversions

Conversions Part 2

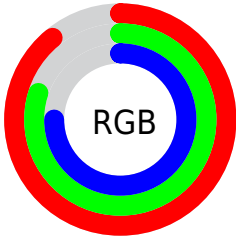
Format	Color
RYB	228, 209, 191
Decimal	14994367
CIELab	83.43, 6.83, 9.17
CIELCh	83, 11.432, 53.330
Yxy	62.9674, 0.3413, 0.3425
Android (android.graphics.Color)	4293184447 (0xFFE4CBBF)
YUV	209.1070, -8.9268, 16.5692
Hunter-Lab	79.3520, 2.2990, 12.1081

Details

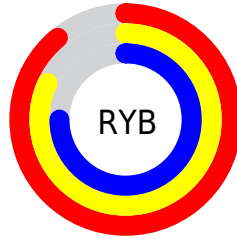
The Hex color **E4CBBF** is a light color, and the websafe version is hex **CCCCCC**. A complement of this color would be **BFD8E4**, and the grayscale version is **D1D1D1**.

A 20% lighter version of the original color is **FFFFFF7**, and **AC958A** is the 20% darker color. If you saturate the color by 10%, you get **E4BCA8**, and if you desaturate by 10%, it is **E4DAD6**.

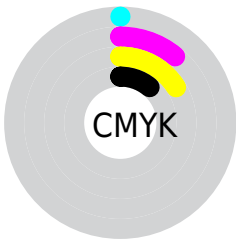
Distribution



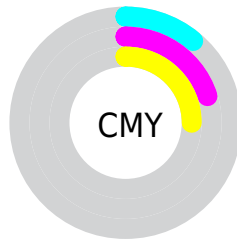
- Red (89%)
- Green (80%)
- Blue (75%)



- Red (89%)
- Yellow (82%)
- Blue (75%)



- Cyan (0%)
- Magenta (11%)
- Yellow (16%)
- Black (11%)



- Cyan (11%)
- Magenta (20%)
- Yellow (25%)

Brightness & Saturation Gradients

These gradients show how the Hex color E4CBBF changes by changing the brightness by 10 percent. The first figure shows a shift by +10% for each color and the second figure -10%.

Similar to the brightness gradients but the following saturation gradients show a change of the Hex color E4CBBF by changing the saturation by 10% instead.

 E4CBBF

 E4CBBF

FFFFFFF

 C8B0A4

 FFFFFF7

 AC958A

 927B70

 786258

 5E4A40

 46342A

 2F1F16

 1B0700

 000000

 E4CBBF

 E4CBBF

 E4BCA8

 E4DAD6

 E4AC91

 E4EAED

 E49D7B

 E4F9FF

 E48D64

 E4FFFF

 E47E4D

 E46F36

 E45F1F

 E45009

 E44A00

Harmonies

Analogous

The Analogous color harmony consists of three colors that are next to each other on the color wheel.



E7C9C8



E4CBBF



DBCEBB

Triad

The Triadic color harmony groups three colors that are evenly spaced from another and form a triangle on the color wheel.



E4CBBF



B9D6CD



CFCEE4

Complementary

The Complementary color scheme is a pair of colors which are on the opposite of each other on the color wheel.



E4CBBF



BFD8E4

Split Complementary

Split-complementary colors differ from the complementary color scheme. The scheme consists of three colors, the original color and two neighbors of the complement color.



C2D2E5



E4CBBF



B5D6D8

Square

The Square scheme is like the rectangle color scheme, but the four colors are evenly spaced on the color wheel.



E4CBBF



C3D5C3



B8D4E1



DCCBDD

Rectangle

The Rectangle color scheme consists of four colors that form a rectangle on the color wheel.



E4CBBF



D4D1BB



B8D4E1



CBCFE5

Sweetspot

The Sweet Spot groups the original color and five complimentary colors.



E4CBBF



FFF6F2



E4BFD8



807A78



000000



808080

Same Dimension

The Same Dimension uses a secret algorithm to generate beautiful new colors.



E4CBBF



FFDECF



E4DDBF



736B67



B33A00



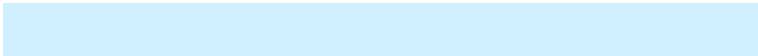
331100

Inverse Universe

The Inverse Universe completely reimagines the original color for something new.



BFD8E4



CFEFFF



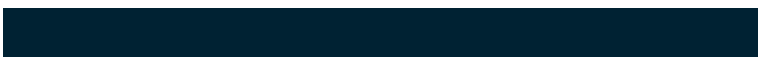
BFC6E4



676F73



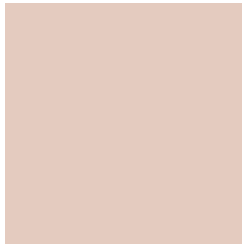
0079B3



002233

Previews

White Background



This preview shows how the Hex color E4CBBF looks on a white background.

Color Contrast Check

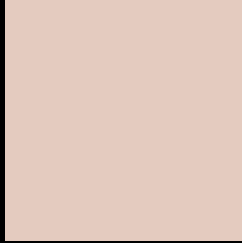
Large Text (above 18pt) WCAG AA × Fail

Any Text WCAG AA × Fail

Large Text (above 18pt) WCAG AAA × Fail

Any Text WCAG AAA × Fail

Black Background



This preview shows how the Hex color E4CBBF looks on a black background.

Color Contrast Check

Large Text (above 18pt) WCAG AA ✓ Pass

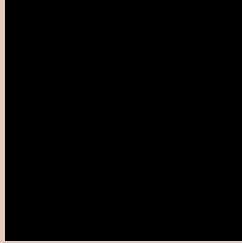
Any Text WCAG AA ✓ Pass

Large Text (above 18pt) WCAG AAA ✓ Pass

Any Text WCAG AAA ✓ Pass

If you want to check with other color combinations, try the [Color Contrast Checker](#).

Hex E4CBBF Background



This preview shows how black text looks on a background with the Hex color E4CBBF.



This preview shows how white text looks on a background with the Hex color E4CBBF.

Color Blindness Simulation

Color vision deficiency is a very complex topic, and I could not describe the different causes any better than Wikipedia does, so if you want to learn more, you should check out their [article about color blindness](#).

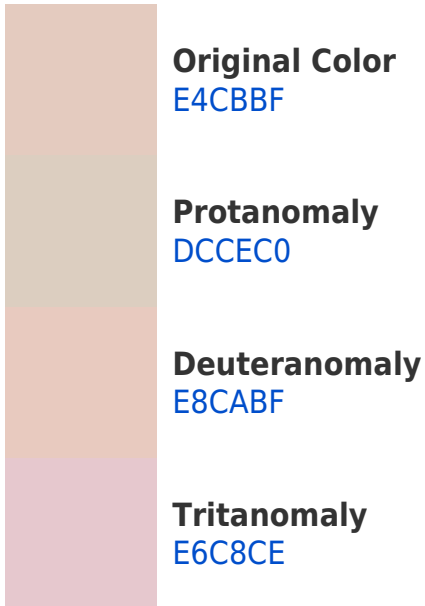
Dichromacy



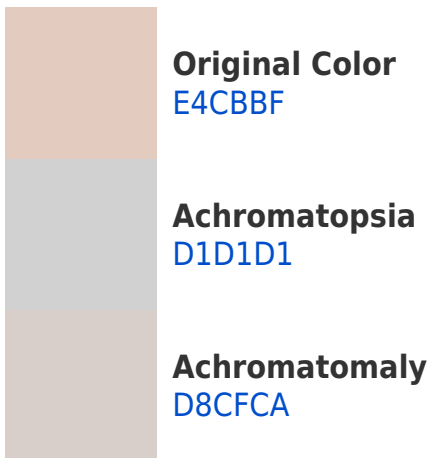


Tritanopia
E7C7D7

Trichromacy



Monochromacy



CSS Examples

Text

The CSS property to change the color of the text to Hex E4CBBF is called "color". The color property can be set on classes, ids or directly on the HTML element.

This example shows how text in the color #E4CBBF looks like.

```
.text, #text, p{  
    color:#E4CBBF  
}
```

If you want to add a text shadow in that color use the text-shadow property, you can generate a text shadow directly with our [CSS Text Shadow Generator](#).

Here you see how black text with a 4 pixel #E4CBBF colored shadow looks like.

```
.shadow{ text-shadow: 4px 4px 2px #E4CBBF
}
```

Border

The CSS property to change the border of an element to Hex E4CBBF is called "border". The border property can be set on classes, ids or directly on the HTML element.

This example shows the color as border, it can be applied via the CSS property "border" or "border-color".

```
.border, #border, table{ border:4px solid
#E4CBBF }
```

If only the border color should be changed use the property `border-color`.

```
.border{ border-color:#E4CBBF }
```

If you want to add a box shadow in that color use:

Here you see how a box with a 4 pixel #E4CBBF colored shadow looks like.

```
.boxshadow{ -moz-box-shadow:4px 4px 4px  
4px #E4CBBF; -webkit-box-shadow:4px 4px  
4px 4px #E4CBBF; box-shadow:4px 4px 4px  
4px #E4CBBF }
```

Background

The CSS property to change the background color of an element to Hex E4CBBF is called "background". The background property can be set on classes, ids or directly on the HTML element.

```
.background, #background, body{  
background:#E4CBBF }
```

If only the background color should be changed can be used:

```
.background{ background-color:#E4CBBF }
```

This example shows the color as background, it is applied via the CSS property "background".

To optimize and compress your CSS code, you can use our [online CSS compressor and optimizer](#) based on csstidy. If you want to create a linear or radial gradient as background or border, check our [CSS Gradient Generator](#).

Hey! You found this booklet interesting? Support Converting Colors with the new Membership Option!

The pro membership hides all ads, plus gives you double the colors in the color bucket, and more awesome pro features!

[Learn more, Memberships starting at \\$2.50/m!](#)

**Follow me
on Twitter!**

@ConvertingColor