

Converting Colors

Hex(E4D3D8)

Have a look what the booklet for
Hex(E4D3D8) contains.

Hex(E4D3D8)	3
<i>Conversions</i>	4
<i>Details</i>	6
<i>Harmonies</i>	11
<i>Previews</i>	23
<i>Color Blindness Simulation</i>	26
<i>CSS Examples</i>	29

Color

Hex(E4D3D8)

Conversions

Conversions Part 1

Format	Color
Hex	E4D3D8
RGB	228, 211, 216
RGB Percent	89%, 83%, 85%
CMY	0.1059, 0.1725, 0.1529
CMYK	0.00, 0.07, 0.05, 0.11
HSL	342°, 24%, 86%
HSV	342°, 7%, 89%
XYZ	67.6838, 68.0404, 74.5315
YIQ	216.6530, 8.5270, 5.1590

Conversions

Conversions Part 2

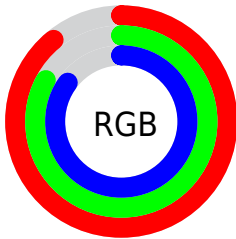
Format	Color
R _Y B	228, 211, 216
Decimal	14996440
CIE Lab	86.03, 6.73, -0.35
CIE LCh	86, 6.737, 356.995
Yxy	68.0404, 0.3219, 0.3236
Android (android.graphics.Color)	4293186520 (0xFFE4D3D8)
YUV	216.6530, -0.3219, 9.9513
Hunter-Lab	82.4866, 2.1155, 4.1686

Details

The Hex color **E4D3D8** is a light color, and the websafe version is hex **CCCCCC**. A complement of this color would be **D3E4DF**, and the grayscale version is **D9D9D9**.

A 20% lighter version of the original color is **FFFFFF**, and **AD9CA1** is the 20% darker color. If you saturate the color by 10%, you get **E4BCC8**, and if you desaturate by 10%, it is **E4EAE8**.

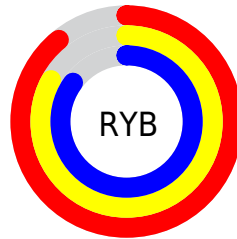
Distribution



Red (89%)

Green (83%)

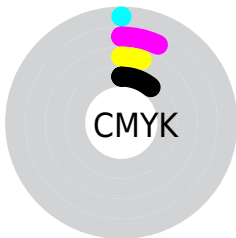
Blue (85%)



Red (89%)

Yellow (83%)

Blue (85%)

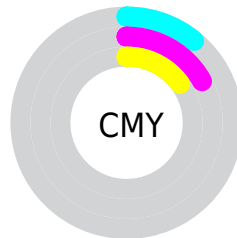


Cyan (0%)

Magenta (7%)

Yellow (5%)

Black (11%)



Cyan (11%)

Magenta (17%)

Yellow (15%)

Brightness & Saturation Gradients

These gradients show how the Hex color E4D3D8 changes by changing the brightness by 10 percent. The first figure shows a shift by +10% for each color and the second figure -10%.

Similar to the brightness gradients but the following saturation gradients show a change of the Hex color E4D3D8 by changing the saturation by 10% instead.

 E4D3D8

FFFFFF

 E4D3D8

 C8B7BC

 AD9CA1

 928287

 78696E

 5F5155

 483A3E

 312528

 1C1014

 000000

 E4D3D8

 E4D3D8

 E4BCC8

 E4EAE8

 E4A5B8

 E4FFF8

 E48FA8

 E4FFFF

 E47898

 E46188

 E44A77

 E43367

 E41D57

 E40647

Harmonies

Analogous

The Analogous color harmony consists of three colors that are next to each other on the color wheel.



DFD4DE



E4D3D8



E5D3D2

Triad

The Triadic color harmony groups three colors that are evenly spaced from another and form a triangle on the color wheel.



E4D3D8



D6D9CC



CADA E2

Complementary

The Complementary color scheme is a pair of colors which are on the opposite of each other on the color wheel.



E4D3D8



D3E4DF

Split Complementary

Split-complementary colors differ from the complementary color scheme. The scheme consists of three colors, the original color and two neighbors of the complement color.



C8DBDD



E4D3D8



CFDAD0

Square

The Square scheme is like the rectangle color scheme, but the four colors are evenly spaced on the color wheel.



E4D3D8



DDD6CB



CADBD6



D0D8E4

Rectangle

The Rectangle color scheme consists of four colors that form a rectangle on the color wheel.



E4D3D8



E4D4CE



CADBD6



C9DAE0

Sweetspot

The Sweet Spot groups the original color and five complimentary colors.



E4D3D8



FFFAFB



DFD3E4



807D7E



000000



808080

Same Dimension

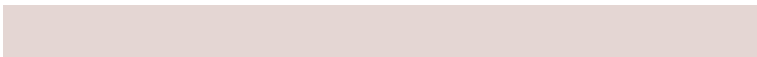
The Same Dimension uses a secret algorithm to generate beautiful new colors.



E4D3D8



FFE8EF



E4D6D3



73676B



B30035



33000F

Inverse Universe

The Inverse Universe completely reimagines the original color for something new.



E4D3D8



FFE8EF



D3E1E4



73676B



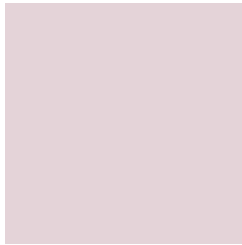
B30035



33000F

Previews

White Background



This preview shows how the Hex color E4D3D8 looks on a white background.

Color Contrast Check

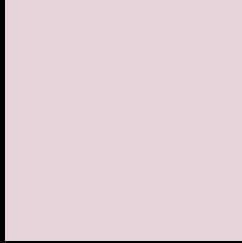
Large Text (above 18pt) WCAG AA × Fail

Any Text WCAG AA × Fail

Large Text (above 18pt) WCAG AAA × Fail

Any Text WCAG AAA × Fail

Black Background



This preview shows how the Hex color E4D3D8 looks on a black background.

Color Contrast Check

Large Text (above 18pt) WCAG AA ✓ Pass

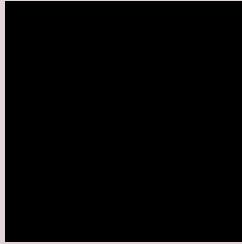
Any Text WCAG AA ✓ Pass

Large Text (above 18pt) WCAG AAA ✓ Pass

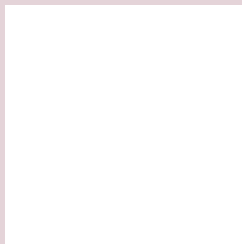
Any Text WCAG AAA ✓ Pass

If you want to check with other color combinations, try the [Color Contrast Checker](#).

Hex E4D3D8 Background



This preview shows how black text looks on a background with the Hex color E4D3D8.

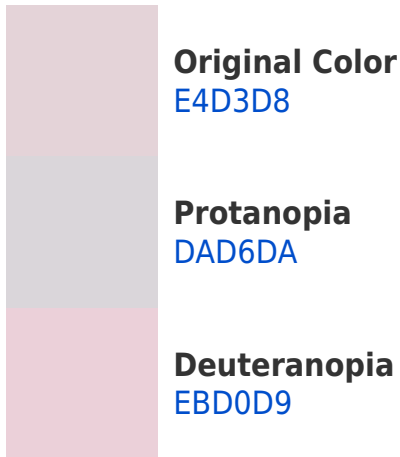


This preview shows how white text looks on a background with the Hex color E4D3D8.

Color Blindness Simulation

Color vision deficiency is a very complex topic, and I could not describe the different causes any better than Wikipedia does, so if you want to learn more, you should check out their [article about color blindness](#).

Dichromacy





Tritanopia
E5D1E2

Trichromacy



Original Color

E4D3D8

Protanomaly

DED5D9

Deuteranomaly

E8D1D9

Tritanomaly

E5D2DE

Monochromacy



Original Color

E4D3D8

Achromatopsia

D9D9D9

Achromatomaly

DDD7D9

CSS Examples

Text

The CSS property to change the color of the text to Hex E4D3D8 is called "color". The color property can be set on classes, ids or directly on the HTML element.

This example shows how text in the color #E4D3D8 looks like.

```
.text, #text, p{  
    color:#E4D3D8  
}
```

If you want to add a text shadow in that color use the text-shadow property, you can generate a text shadow directly with our [CSS Text Shadow Generator](#).

Here you see how black text with a 4 pixel #E4D3D8 colored shadow looks like.

```
.shadow{ text-shadow: 4px 4px 2px #E4D3D8 }  
}
```

Border

The CSS property to change the border of an element to Hex E4D3D8 is called "border". The border property can be set on classes, ids or directly on the HTML element.

This example shows the color as border, it can be applied via the CSS property "border" or "border-color".

```
.border, #border, table{ border:4px solid #E4D3D8 }  
}
```

If only the border color should be changed use the property `border-color`.

```
.border{ border-color:#E4D3D8 }
```

If you want to add a box shadow in that color use:

Here you see how a box with a 4 pixel #E4D3D8 colored shadow looks like.

```
.boxshadow{ -moz-box-shadow:4px 4px 4px  
4px #E4D3D8; -webkit-box-shadow:4px 4px  
4px 4px #E4D3D8; box-shadow:4px 4px 4px  
4px #E4D3D8 }
```

Background

The CSS property to change the background color of an element to Hex E4D3D8 is called "background". The background property can be set on classes, ids or directly on the HTML element.

```
.background, #background, body{  
background:#E4D3D8 }
```

If only the background color should be changed can be used:

```
.background{ background-color:#E4D3D8 }
```

This example shows the color as background, it is applied via the CSS property "background".

To optimize and compress your CSS code, you can use our [online CSS compressor and optimizer](#) based on csstidy. If you want to create a linear or radial gradient as background or border, check our [CSS Gradient Generator](#).

Hey! You found this booklet interesting? Support Converting Colors with the new Membership Option!

The pro membership hides all ads, plus gives you double the colors in the color bucket, and more awesome pro features!

[Learn more, Memberships starting at \\$2.50/m!](#)

**Follow me
on Twitter!**

@ConvertingColor