

Converting Colors

Hex(E52E63)

Have a look what the booklet for
Hex(E52E63) contains.

Hex(E52E63)	3
<i>Conversions</i>	4
<i>Details</i>	6
<i>Harmonies</i>	11
<i>Previews</i>	23
<i>Color Blindness Simulation</i>	26
<i>CSS Examples</i>	29

Color

Hex(E52E63)

Conversions

Conversions Part 1

Format	Color
Hex	E52E63
RGB	229, 46, 99
RGB Percent	90%, 18%, 39%
CMY	0.1020, 0.8196, 0.6118
CMYK	0.00, 0.80, 0.57, 0.10
HSL	343°, 78%, 54%
HSV	343°, 80%, 90%
XYZ	35.5422, 19.5129, 13.6975
YIQ	106.7590, 92.0550, 55.2790

Conversions

Conversions Part 2

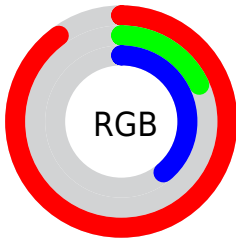
Format	Color
R_{YB}	229, 46, 99
Decimal	15019619
CIE _{Lab}	51.28, 70.22, 15.79
CIE _{LCh}	51, 71.969, 12.674
Yxy	19.5129, 0.5170, 0.2838
Android (android.graphics.Color)	4293209699 (0xFFE52E63)
YUV	106.7590, -3.8252, 107.2054
Hunter-Lab	44.1734, 66.3191, 12.5365

Details

The Hex color **E52E63** is a dark color, and the websafe version is hex **FF3366**. The color can be described as dark washed rose. A complement of this color would be **2EE5B0**, and the grayscale version is **6B6B6B**.

A 20% lighter version of the original color is **FF6E95**, and **A60035** is the 20% darker color. If you saturate the color by 10%, you get **E51753**, and if you desaturate by 10%, it is **E54573**.

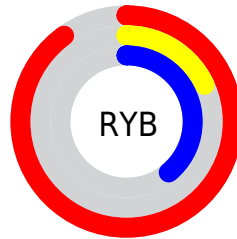
Distribution



Red (90%)

Green (18%)

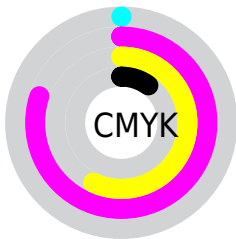
Blue (39%)



Red (90%)

Yellow (18%)

Blue (39%)

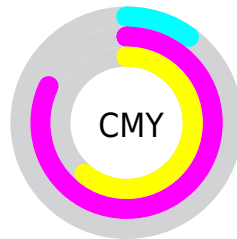


Cyan (0%)

Magenta (80%)

Yellow (57%)

Black (10%)



Cyan (10%)

Magenta (82%)

Yellow (61%)

Brightness & Saturation Gradients

These gradients show how the Hex color E52E63 changes by changing the brightness by 10 percent. The first figure shows a shift by +10% for each color and the second figure -10%.

Similar to the brightness gradients but the following saturation gradients show a change of the Hex color E52E63 by changing the saturation by 10% instead.

 E52E63

 E52E63

FFFFFF

 C6004B

 FF6E95

 A60035

 FF8CB0

 880021

 FFA9CB

 690009

 FFC7E7

 4C0003

 FFE5FF

 2D0001

 000000

 E52E63

 E52E63

 E51753

 E54573

 E50042

 E55C84

 E57394

 E58AA4

 E5A1B4

 E5B7C5

 E5CED5

 E5E5E5

 E5FCF5

Harmonies

Analogous

The Analogous color harmony consists of three colors that are next to each other on the color wheel.



D439A0



E52E63



D64B28

Triad

The Triadic color harmony groups three colors that are evenly spaced from another and form a triangle on the color wheel.



E52E63



2F8C07



008BF0

Complementary

The Complementary color scheme is a pair of colors which are on the opposite of each other on the color wheel.



E52E63



2EE5B0

Split Complementary

Split-complementary colors differ from the complementary color scheme. The scheme consists of three colors, the original color and two neighbors of the complement color.



0093CD



E52E63



009353

Square

The Square scheme is like the rectangle color scheme, but the four colors are evenly spaced on the color wheel.



E52E63



7C8000



009594



0079F4

Rectangle

The Rectangle color scheme consists of four colors that form a rectangle on the color wheel.



E52E63



BF6100



009594



008FE8

Sweetspot

The Sweet Spot groups the original color and five complimentary colors.



E52E63



FFC2D4



AE2EE5



805B65



000000



808080

Same Dimension

The Same Dimension uses a secret algorithm to generate beautiful new colors.



E52E63



FF0A51



E5532E



73676B



B30034



33000F

Inverse Universe

The Inverse Universe completely reimagines the original color for something new.



E52E63



FF0A51



2EC0E5



73676B



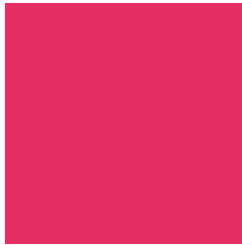
B30034



33000F

Previews

White Background



This preview shows how the Hex color E52E63 looks on a white background.

Color Contrast Check

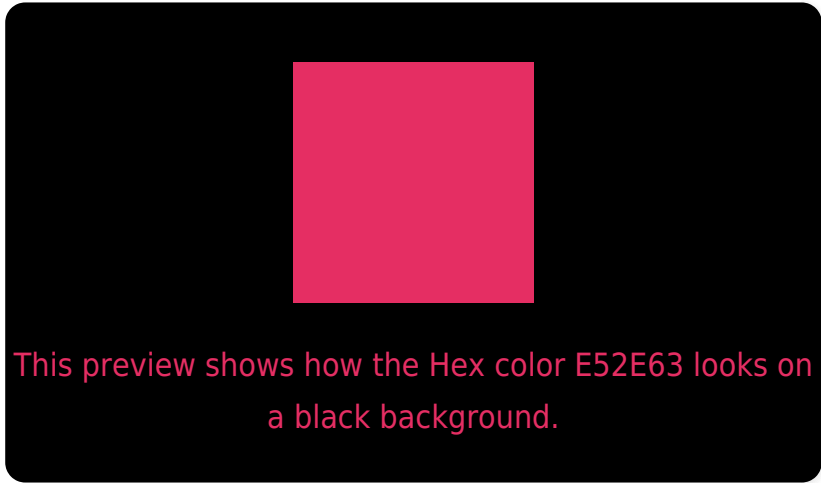
Large Text (above 18pt) WCAG AA ✓ Pass

Any Text WCAG AA × Fail

Large Text (above 18pt) WCAG AAA × Fail

Any Text WCAG AAA × Fail

Black Background



Color Contrast Check

Large Text (above 18pt) WCAG AA ✓ Pass

Any Text WCAG AA ✓ Pass

Large Text (above 18pt) WCAG AAA ✓ Pass

Any Text WCAG AAA × Fail

If you want to check with other color combinations, try the [Color Contrast Checker](#).

Hex E52E63 Background



This preview shows how black text looks on a background with the Hex color E52E63.

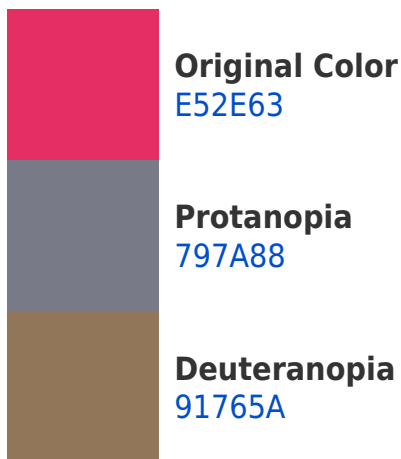



This preview shows how white text looks on a background with the Hex color E52E63.

Color Blindness Simulation

Color vision deficiency is a very complex topic, and I could not describe the different causes any better than Wikipedia does, so if you want to learn more, you should check out their [article about color blindness](#).

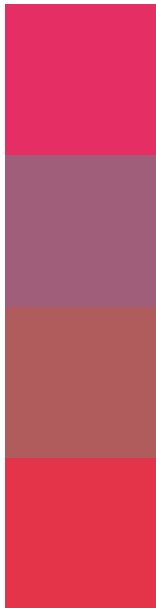
Dichromacy





Tritanopia
E3383A

Trichromacy



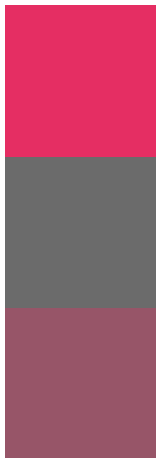
Original Color
E52E63

Protanomaly
A05E7B

Deuteranomaly
B05C5D

Tritanomaly
E43449

Monochromacy



Original Color
E52E63

Achromatopsia
6B6B6B

Achromatomaly
975568

CSS Examples

Text

The CSS property to change the color of the text to Hex E52E63 is called "color". The color property can be set on classes, ids or directly on the HTML element.

This example shows how text in the color #E52E63 looks like.

```
.text, #text, p{  
    color:#E52E63  
}
```

If you want to add a text shadow in that color use the text-shadow property, you can generate a text shadow directly with our [CSS Text Shadow Generator](#).

Here you see how black text with a 4 pixel #E52E63 colored shadow looks like.

```
.shadow{ text-shadow: 4px 4px 2px #E52E63
}
```

Border

The CSS property to change the border of an element to Hex E52E63 is called "border". The border property can be set on classes, ids or directly on the HTML element.

This example shows the color as border, it can be applied via the CSS property "border" or "border-color".

```
.border, #border, table{ border:4px solid
#E52E63 }
```

If only the border color should be changed use the property `border-color`.

```
.border{ border-color:#E52E63 }
```

If you want to add a box shadow in that color use:

Here you see how a box with a 4 pixel #E52E63 colored shadow looks like.

```
.boxshadow{ -moz-box-shadow:4px 4px 4px  
4px #E52E63; -webkit-box-shadow:4px 4px  
4px 4px #E52E63; box-shadow:4px 4px 4px  
4px #E52E63 }
```

Background

The CSS property to change the background color of an element to Hex E52E63 is called "background". The background property can be set on classes, ids or directly on the HTML element.

```
.background, #background, body{  
background:#E52E63 }
```

If only the background color should be changed can be used:

```
.background{ background-color:#E52E63 }
```

This example shows the color as background, it is applied via the CSS property "background".

To optimize and compress your CSS code, you can use our [online CSS compressor and optimizer](#) based on csstidy. If you want to create a linear or radial gradient as background or border, check our [CSS Gradient Generator](#).

Hey! You found this booklet interesting? Support Converting Colors with the new Membership Option!

The pro membership hides all ads, plus gives you double the colors in the color bucket, and more awesome pro features!

[Learn more, Memberships starting at \\$2.50/m!](#)

**Follow me
on Twitter!**

@ConvertingColor