

Converting Colors

Hex(E53468)

Have a look what the booklet for
Hex(E53468) contains.

Hex(E53468)	3
<i>Conversions</i>	4
<i>Details</i>	6
<i>Harmonies</i>	11
<i>Previews</i>	23
<i>Color Blindness Simulation</i>	26
<i>CSS Examples</i>	29

Color

Hex(E53468)

Conversions

Conversions Part 1

Format	Color
Hex	E53468
RGB	229, 52, 104
RGB Percent	90%, 20%, 41%
CMY	0.1020, 0.7961, 0.5922
CMYK	0.00, 0.77, 0.55, 0.10
HSL	342°, 77%, 55%
HSV	342°, 77%, 90%
XYZ	36.0398, 20.1135, 15.0795
YIQ	110.8510, 88.8000, 53.6960

Conversions

Conversions Part 2

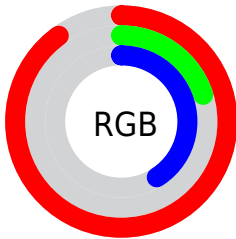
Format	Color
R_{YB}	229, 52, 104
Decimal	15021160
CIE _{Lab}	51.97, 68.94, 13.71
CIE _{LCh}	52, 70.292, 11.244
Yxy	20.1135, 0.5059, 0.2824
Android (android.graphics.Color)	4293211240 (0xFFE53468)
YUV	110.8510, -3.3775, 103.6167
Hunter-Lab	44.8480, 64.9581, 11.4583

Details

The Hex color **E53468** is a dark color, and the websafe version is hex **CC3366**. The color can be described as dark washed rose. A complement of this color would be **34E5B1**, and the grayscale version is **6F6F6F**.

A 20% lighter version of the original color is **FF739B**, and **A7003A** is the 20% darker color. If you saturate the color by 10%, you get **E51D58**, and if you desaturate by 10%, it is **E54B78**.

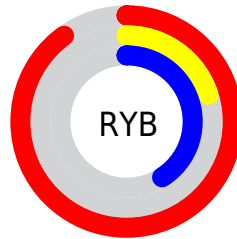
Distribution



Red (90%)

Green (20%)

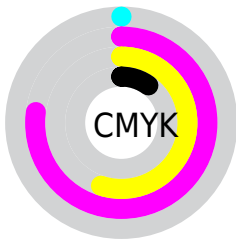
Blue (41%)



Red (90%)

Yellow (20%)

Blue (41%)

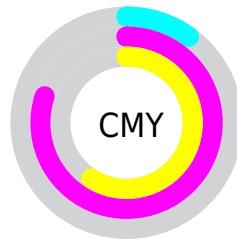


Cyan (0%)

Magenta (77%)

Yellow (55%)

Black (10%)



Cyan (10%)

Magenta (80%)

Yellow (59%)

Brightness & Saturation Gradients

These gradients show how the Hex color E53468 changes by changing the brightness by 10 percent. The first figure shows a shift by +10% for each color and the second figure -10%.

Similar to the brightness gradients but the following saturation gradients show a change of the Hex color E53468 by changing the saturation by 10% instead.

 E53468

 E53468

FFFFFF

 C60050

 FF739B

 A7003A

 FF90B6

 880025

 FFADD1

 6A0010

 FFCAED

 4D0003

 FFE8FF

 2E0002

 000000

 E53468

 E53468

 E51D58

 E54B78

 E50648

 E56288

 E50043

 E57999

 E590A9

 E5A7B9

 E5BDC9

 E5D4D9

 E5EBE9

 E5FFFA

Harmonies

Analogous

The Analogous color harmony consists of three colors that are next to each other on the color wheel.



D33FA4



E53468



D84D2E

Triad

The Triadic color harmony groups three colors that are evenly spaced from another and form a triangle on the color wheel.



E53468



3A8D0C



008DEF

Complementary

The Complementary color scheme is a pair of colors which are on the opposite of each other on the color wheel.



E53468



34E5B1

Split Complementary

Split-complementary colors differ from the complementary color scheme. The scheme consists of three colors, the original color and two neighbors of the complement color.



0095CA



E53468



009453

Square

The Square scheme is like the rectangle color scheme, but the four colors are evenly spaced on the color wheel.



E53468



818000



009692



007CF3

Rectangle

The Rectangle color scheme consists of four colors that form a rectangle on the color wheel.



E53468



C26200



009692



0091E6

Sweetspot

The Sweet Spot groups the original color and five complimentary colors.



E53468



FFC4D6



B034E5



805C66



000000



808080

Same Dimension

The Same Dimension uses a secret algorithm to generate beautiful new colors.



E53468



FF1258



E55734



73676B



B30034



33000F

Inverse Universe

The Inverse Universe completely reimagines the original color for something new.



E53468



FF1258



34C2E5



73676B



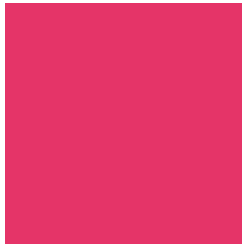
B30034



33000F

Previews

White Background



This preview shows how the Hex color E53468 looks on a white background.

Color Contrast Check

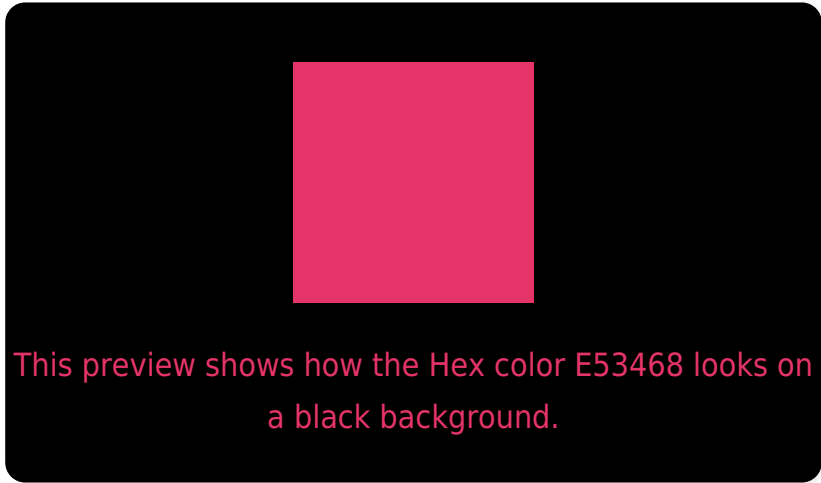
Large Text (above 18pt) WCAG AA ✓ Pass

Any Text WCAG AA ✗ Fail

Large Text (above 18pt) WCAG AAA ✗ Fail

Any Text WCAG AAA ✗ Fail

Black Background



Color Contrast Check

Large Text (above 18pt) WCAG AA ✓ Pass

Any Text WCAG AA ✓ Pass

Large Text (above 18pt) WCAG AAA ✓ Pass

Any Text WCAG AAA × Fail

If you want to check with other color combinations, try the [Color Contrast Checker](#).

Hex E53468 Background



This preview shows how black text looks on a background with the Hex color E53468.

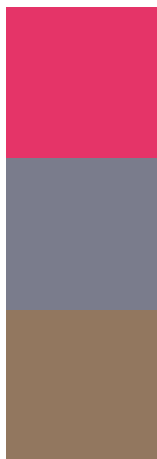


This preview shows how white text looks on a background with the Hex color E53468.

Color Blindness Simulation

Color vision deficiency is a very complex topic, and I could not describe the different causes any better than Wikipedia does, so if you want to learn more, you should check out their [article about color blindness](#).

Dichromacy



Original Color
E53468

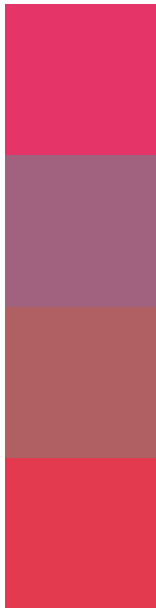
Protanopia
7A7C8C

Deuteranopia
92775F



Tritanopia
E33E40

Trichromacy



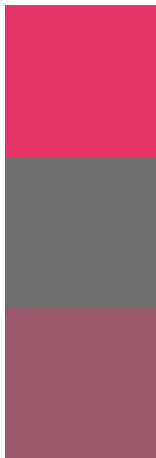
Original Color
E53468

Protanomaly
A1627F

Deuteranomaly
B05F62

Tritanomaly
E43A4F

Monochromacy



Original Color
E53468

Achromatopsia
6F6F6F

Achromatomaly
9A5A6C

CSS Examples

Text

The CSS property to change the color of the text to Hex E53468 is called "color". The color property can be set on classes, ids or directly on the HTML element.

This example shows how text in the color #E53468 looks like.

```
.text, #text, p{  
  color:#E53468  
}
```

If you want to add a text shadow in that color use the text-shadow property, you can generate a text shadow directly with our [CSS Text Shadow Generator](#).

Here you see how black text with a 4 pixel #E53468 colored shadow looks like.

```
.shadow{ text-shadow: 4px 4px 2px #E53468
}
```

Border

The CSS property to change the border of an element to Hex E53468 is called "border". The border property can be set on classes, ids or directly on the HTML element.

This example shows the color as border, it can be applied via the CSS property "border" or "border-color".

```
.border, #border, table{ border:4px solid
#E53468 }
```

If only the border color should be changed use the property `border-color`.

```
.border{ border-color:#E53468 }
```

If you want to add a box shadow in that color use:

Here you see how a box with a 4 pixel #E53468 colored shadow looks like.

```
.boxshadow{ -moz-box-shadow:4px 4px 4px  
4px #E53468; -webkit-box-shadow:4px 4px  
4px 4px #E53468; box-shadow:4px 4px 4px  
4px #E53468 }
```

Background

The CSS property to change the background color of an element to Hex E53468 is called "background". The background property can be set on classes, ids or directly on the HTML element.

```
.background, #background, body{  
background:#E53468 }
```

If only the background color should be changed can be used:

```
.background{ background-color:#E53468 }
```

This example shows the color as background, it is applied via the CSS property "background".

To optimize and compress your CSS code, you can use our [online CSS compressor and optimizer](#) based on csstidy. If you want to create a linear or radial gradient as background or border, check our [CSS Gradient Generator](#).

Hey! You found this booklet interesting? Support Converting Colors with the new Membership Option!

The pro membership hides all ads, plus gives you double the colors in the color bucket, and more awesome pro features!

[Learn more, Memberships starting at \\$2.50/m!](#)

**Follow me
on Twitter!**

@ConvertingColor