

# Converting Colors

Hex(E53D68)

Have a look what the booklet for  
Hex(E53D68) contains.

<b>Hex(E53D68)</b> .....	3
<i><b>Conversions</b></i> .....	4
<i><b>Details</b></i> .....	6
<i><b>Harmonies</b></i> .....	11
<i><b>Previews</b></i> .....	23
<i><b>Color Blindness Simulation</b></i> .....	26
<i><b>CSS Examples</b></i> .....	29

# Color

**Hex(E53D68)**

# Conversions

## Conversions Part 1

<b>Format</b>	<b>Color</b>
Hex	E53D68
RGB	229, 61, 104
RGB Percent	90%, 24%, 41%
CMY	0.1020, 0.7608, 0.5922
CMYK	0.00, 0.73, 0.55, 0.10
HSL	345°, 76%, 57%
HSV	345°, 73%, 90%
XYZ	36.4805, 20.9950, 15.2264
YIQ	116.1340, 86.3250, 48.9890

# Conversions

## Conversions Part 2

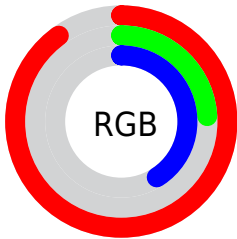
<b>Format</b>	<b>Color</b>
<b>R<sub>YB</sub></b>	229, 61, 104
Decimal	15023464
CIE <sub>Lab</sub>	52.94, 66.19, 15.06
CIE <sub>LCh</sub>	53, 67.885, 12.816
Yxy	20.9950, 0.5018, 0.2888
Android (android.graphics.Color)	4293213544 (0xFFE53D68)
YUV	116.1340, -5.9821, 98.9835
Hunter-Lab	45.8203, 61.9301, 12.3717

# Details

The Hex color **E53D68** is a dark color, and the websafe version is hex **CC3366**. The color can be described as dark washed rose. A complement of this color would be **3DE5BA**, and the grayscale version is **747474**.

A 20% lighter version of the original color is **FF799B**, and **A7003A** is the 20% darker color. If you saturate the color by 10%, you get **E52657**, and if you desaturate by 10%, it is **E55479**.

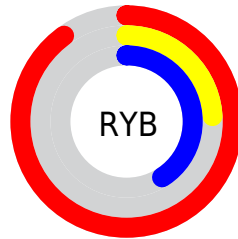
# Distribution



Red (90%)

Green (24%)

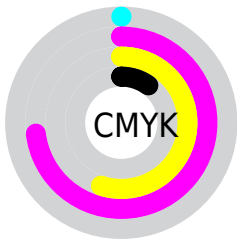
Blue (41%)



Red (90%)

Yellow (24%)

Blue (41%)

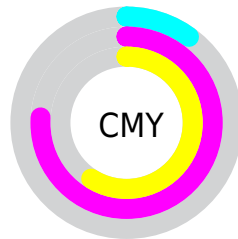


Cyan (0%)

Magenta (73%)

Yellow (55%)

Black (10%)



Cyan (10%)

Magenta (76%)

Yellow (59%)

# Brightness & Saturation Gradients

These gradients show how the Hex color E53D68 changes by changing the brightness by 10 percent. The first figure shows a shift by +10% for each color and the second figure -10%.

Similar to the brightness gradients but the following saturation gradients show a change of the Hex color E53D68 by changing the saturation by 10% instead.



 E53D68

 E53D68

FFFFFF

 C61650

 FF799B

 A7003A

 FF96B6

 890024

 FFB3D1

 6A0010

 FFD0ED

 4D0002

 FFE0FF

 2F0002

 000000

 E53D68

 E53D68

 E52657

 E55479

 E50F46

 E56B8A

 E5003B

 E5829B

 E599AC

 E5B0BD

 E5C6CE

 E5DDDF

 E5F4F0

 E5FFFF

# Harmonies

## Analogous

The Analogous color harmony consists of three colors that are next to each other on the color wheel.



D545A2



E53D68



D75431

# Triad

The Triadic color harmony groups three colors that are evenly spaced from another and form a triangle on the color wheel.



E53D68



3C901B



008EEE

# Complementary

The Complementary color scheme is a pair of colors which are on the opposite of each other on the color wheel.



E53D68



3DE5BA

# Split Complementary

Split-complementary colors differ from the complementary color scheme. The scheme consists of three colors, the original color and two neighbors of the complement color.



0097CD



E53D68



00965A

# Square

The Square scheme is like the rectangle color scheme, but the four colors are evenly spaced on the color wheel.



E53D68



818400



009997



007DF1

# Rectangle

The Rectangle color scheme consists of four colors that form a rectangle on the color wheel.



E53D68



C16703



009997



0092E6



# Sweetspot

The Sweet Spot groups the original color and five complimentary colors.



E53D68



FFC7D5



B83DE5



805E67



000000



808080



# Same Dimension

The Same Dimension uses a secret algorithm to generate beautiful new colors.



E53D68



FF1F58



E5643D



73676A



B3002E



33000D



# Inverse Universe

The Inverse Universe completely reimagines the original color for something new.



E53D68



FF1F58



3DBEE5



73676A



B3002E



33000D



# Previews

## White Background



This preview shows how the Hex color E53D68 looks on a white background.

## Color Contrast Check

Large Text (above 18pt) WCAG AA ✓ Pass

Any Text WCAG AA × Fail

Large Text (above 18pt) WCAG AAA × Fail

Any Text WCAG AAA × Fail

# Black Background



## Color Contrast Check

Large Text (above 18pt) WCAG AA ✓ Pass

Any Text WCAG AA ✓ Pass

Large Text (above 18pt) WCAG AAA ✓ Pass

Any Text WCAG AAA × Fail

If you want to check with other color combinations, try the [Color Contrast Checker](#).



## Hex E53D68 Background



This preview shows how black text looks on a background with the Hex color E53D68.

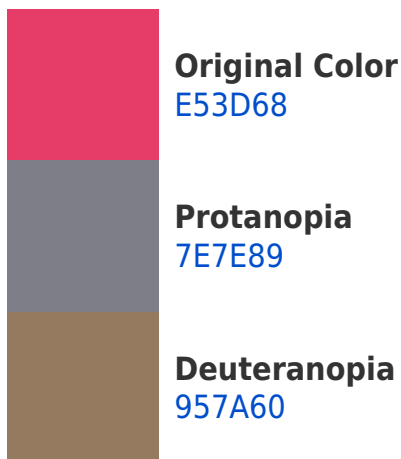


This preview shows how white text looks on a background with the Hex color E53D68.

# Color Blindness Simulation

Color vision deficiency is a very complex topic, and I could not describe the different causes any better than Wikipedia does, so if you want to learn more, you should check out their [article about color blindness](#).

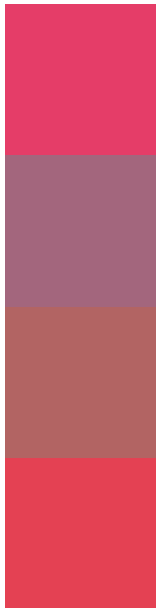
## Dichromacy





**Tritanopia**  
E34447

# Trichromacy



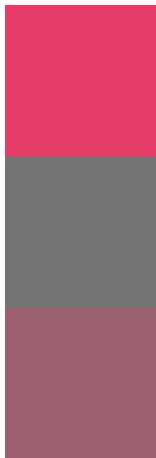
**Original Color**  
E53D68

**Protanomaly**  
A3667D

**Deuteranomaly**  
B26463

**Tritanomaly**  
E44153

# Monochromacy



**Original Color**  
E53D68

**Achromatopsia**  
747474

**Achromatomaly**  
9D6070

# CSS Examples

## Text

The CSS property to change the color of the text to Hex E53D68 is called "color". The color property can be set on classes, ids or directly on the HTML element.

This example shows how text in the color #E53D68 looks like.

```
.text, #text, p{  
    color:#E53D68  
}
```

If you want to add a text shadow in that color use the text-shadow property, you can generate a text shadow directly with our [CSS Text Shadow Generator](#).

Here you see how black text with a 4 pixel #E53D68 colored shadow looks like.

```
.shadow{ text-shadow: 4px 4px 2px #E53D68
}
```

## Border

The CSS property to change the border of an element to Hex E53D68 is called "border". The border property can be set on classes, ids or directly on the HTML element.

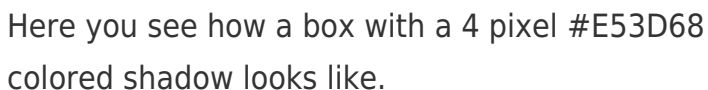
This example shows the color as border, it can be applied via the CSS property "border" or "border-color".

```
.border, #border, table{ border:4px solid
#E53D68 }
```

If only the border color should be changed use the property `border-color`.

```
.border{ border-color:#E53D68 }
```

If you want to add a box shadow in that color use:



Here you see how a box with a 4 pixel #E53D68 colored shadow looks like.

```
.boxshadow{ -moz-box-shadow:4px 4px 4px  
4px #E53D68; -webkit-box-shadow:4px 4px  
4px 4px #E53D68; box-shadow:4px 4px 4px  
4px #E53D68 }
```

# Background

The CSS property to change the background color of an element to Hex E53D68 is called "background". The background property can be set on classes, ids or directly on the HTML element.

```
.background, #background, body{  
background:#E53D68 }
```

If only the background color should be changed can be used:

```
.background{ background-color:#E53D68 }
```

This example shows the color as background, it is applied via the CSS property "background".

To optimize and compress your CSS code, you can use our [online CSS compressor and optimizer](#) based on csstidy. If you want to create a linear or radial gradient as background or border, check our [CSS Gradient Generator](#).



Hey! You found this booklet interesting? Support Converting Colors with the new Membership Option!

The pro membership hides all ads, plus gives you double the colors in the color bucket, and more awesome pro features!

**[Learn more, Memberships starting at \\$2.50/m!](#)**

**Follow me  
on Twitter!**

@ConvertingColor