

Converting Colors

Hex(E53F76)

Have a look what the booklet for
Hex(E53F76) contains.

| | |
|--|----|
| Hex(E53F76) | 3 |
| <i>Conversions</i> | 4 |
| <i>Details</i> | 6 |
| <i>Harmonies</i> | 11 |
| <i>Previews</i> | 23 |
| <i>Color Blindness Simulation</i> | 26 |
| <i>CSS Examples</i> | 29 |

Color

Hex(E53F76)

Conversions

Conversions Part 1

| Format | Color |
|---------------|----------------------------|
| Hex | E53F76 |
| RGB | 229, 63, 118 |
| RGB Percent | 90%, 25%, 46% |
| CMY | 0.1020, 0.7529, 0.5373 |
| CMYK | 0.00, 0.72, 0.48, 0.10 |
| HSL | 340°, 76%, 57% |
| HSV | 340°, 72%, 90% |
| XYZ | 37.3606, 21.5210, 19.3244 |
| YIQ | 118.9040, 81.2810, 52.2970 |

Conversions

Conversions Part 2

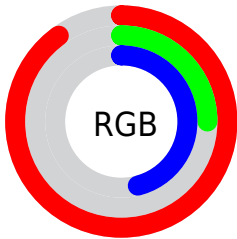
| Format | Color |
|-------------------------------------|-------------------------------|
| R_{YB} | 229, 63, 118 |
| Decimal | 15023990 |
| CIE _{Lab} | 53.52, 66.63, 7.46 |
| CIE _{LCh} | 54, 67.047, 6.387 |
| Yxy | 21.5210, 0.4777, 0.2752 |
| Android (android.graphics.Color) | 4293214070 (0xFFE53F76) |
| YUV | 118.9040, -0.4457, 96.5542 |
| Hunter-Lab | 46.3908, 62.5704, 7.7759 |

Details

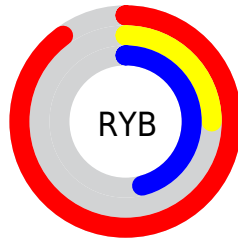
The Hex color **E53F76** is a dark color, and the websafe version is hex **CC3366**. The color can be described as middle washed rose. A complement of this color would be **3FE5AE**, and the grayscale version is **777777**.

A 20% lighter version of the original color is **FF7BAA**, and **A80046** is the 20% darker color. If you saturate the color by 10%, you get **E52867**, and if you desaturate by 10%, it is **E55685**.

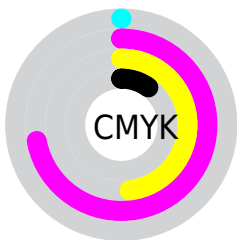
Distribution



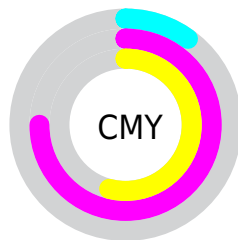
- Red (90%)
- Green (25%)
- Blue (46%)



- Red (90%)
- Yellow (25%)
- Blue (46%)



- Cyan (0%)
- Magenta (72%)
- Yellow (48%)
- Black (10%)



- Cyan (10%)
- Magenta (75%)
- Yellow (54%)

Brightness & Saturation Gradients

These gradients show how the Hex color E53F76 changes by changing the brightness by 10 percent. The first figure shows a shift by +10% for each color and the second figure -10%.

Similar to the brightness gradients but the following saturation gradients show a change of the Hex color E53F76 by changing the saturation by 10% instead.

 E53F76

 E53F76

FFFFFF

 C6195D

 FF7BAA

 A80046

 FF98C5

 890030

 FFB5E1

 6C001C

 FFD2FE

 4F0002

 FFF0FF

 310002

 000000

 E53F76

 E53F76

 E52867

 E55685

 E51157

 E56D95

 E5004C

 E584A4

 E59BB3

 E5B2C3

 E5C8D2

 E5DFE1

 E5F6F1

 E5FFFF

Harmonies

Analogous

The Analogous color harmony consists of three colors that are next to each other on the color wheel.



CE4DAF



E53F76



DD503E

Triad

The Triadic color harmony groups three colors that are evenly spaced from another and form a triangle on the color wheel.



E53F76



518F0F



0092EA

Complementary

The Complementary color scheme is a pair of colors which are on the opposite of each other on the color wheel.



E53F76



3FE5AE

Split Complementary

Split-complementary colors differ from the complementary color scheme. The scheme consists of three colors, the original color and two neighbors of the complement color.



0099C3



E53F76



00974F

Square

The Square scheme is like the rectangle color scheme, but the four colors are evenly spaced on the color wheel.



E53F76



8F8100



009A8B



0083F4

Rectangle

The Rectangle color scheme consists of four colors that form a rectangle on the color wheel.



E53F76



CA6319



009A8B



0095E0

Sweetspot

The Sweet Spot groups the original color and five complimentary colors.



E53F76



FFC7D9



AE3FE5



805E69



000000



808080

Same Dimension

The Same Dimension uses a secret algorithm to generate beautiful new colors.



E53F76



FF216B



E55B3F



73676B



B3003B



330011

Inverse Universe

The Inverse Universe completely reimagines the original color for something new.



E53F76



FF216B



3FC9E5



73676B



B3003B



330011

Previews

White Background



This preview shows how the Hex color E53F76 looks on a white background.

Color Contrast Check

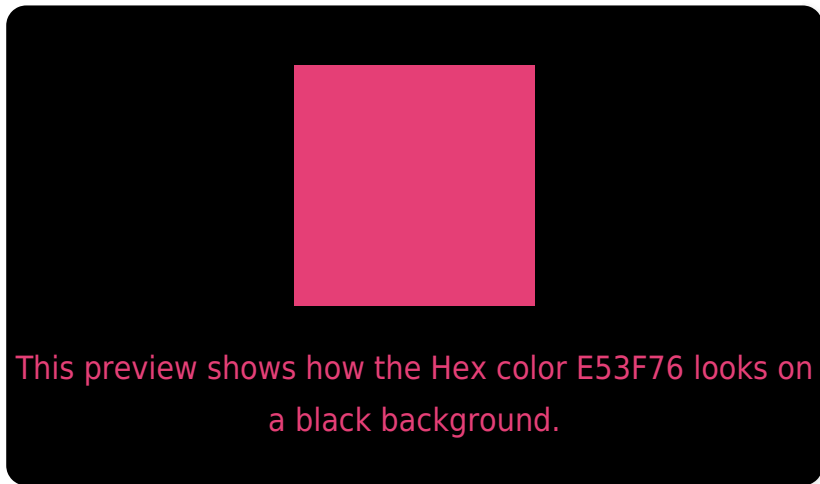
Large Text (above 18pt) WCAG AA ✓ Pass

Any Text WCAG AA × Fail

Large Text (above 18pt) WCAG AAA × Fail

Any Text WCAG AAA × Fail

Black Background



Color Contrast Check

Large Text (above 18pt) WCAG AA ✓ Pass

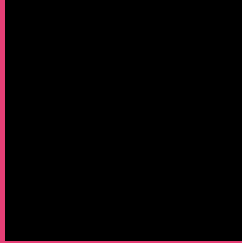
Any Text WCAG AA ✓ Pass

Large Text (above 18pt) WCAG AAA ✓ Pass

Any Text WCAG AAA × Fail

If you want to check with other color combinations, try the [Color Contrast Checker](#).

Hex E53F76 Background



This preview shows how black text looks on a background with the Hex color E53F76.

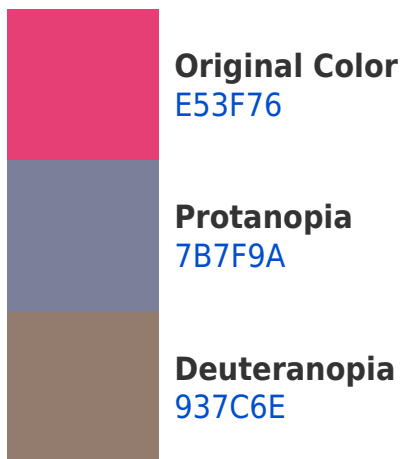



This preview shows how white text looks on a background with the Hex color E53F76.

Color Blindness Simulation

Color vision deficiency is a very complex topic, and I could not describe the different causes any better than Wikipedia does, so if you want to learn more, you should check out their [article about color blindness](#).

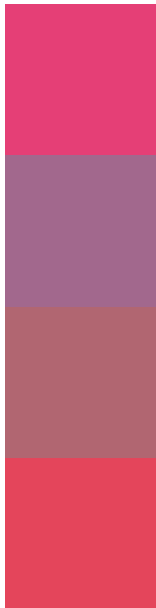
Dichromacy





Tritanopia
E3494C

Trichromacy



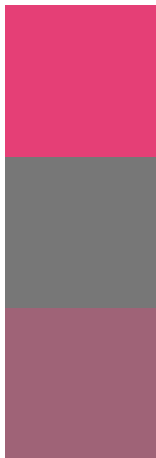
Original Color
E53F76

Protanomaly
A2688D

Deuteranomaly
B16671

Tritanomaly
E4455B

Monochromacy



Original Color
E53F76

Achromatopsia
777777

Achromatomaly
9F6377

CSS Examples

Text

The CSS property to change the color of the text to Hex E53F76 is called "color". The color property can be set on classes, ids or directly on the HTML element.

This example shows how text in the color #E53F76 looks like.

```
.text, #text, p{  
    color:#E53F76  
}
```

If you want to add a text shadow in that color use the text-shadow property, you can generate a text shadow directly with our [CSS Text Shadow Generator](#).

Here you see how black text with a 4 pixel #E53F76 colored shadow looks like.

```
.shadow{ text-shadow: 4px 4px 2px #E53F76
}
```

Border

The CSS property to change the border of an element to Hex E53F76 is called "border". The border property can be set on classes, ids or directly on the HTML element.

This example shows the color as border, it can be applied via the CSS property "border" or "border-color".

```
.border, #border, table{ border:4px solid
#E53F76 }
```

If only the border color should be changed use the property `border-color`.

```
.border{ border-color:#E53F76 }
```

If you want to add a box shadow in that color use:

Here you see how a box with a 4 pixel #E53F76 colored shadow looks like.

```
.boxshadow{ -moz-box-shadow:4px 4px 4px  
4px #E53F76; -webkit-box-shadow:4px 4px  
4px 4px #E53F76; box-shadow:4px 4px 4px  
4px #E53F76 }
```

Background

The CSS property to change the background color of an element to Hex E53F76 is called "background". The background property can be set on classes, ids or directly on the HTML element.

```
.background, #background, body{  
background:#E53F76 }
```

If only the background color should be changed can be used:

```
.background{ background-color:#E53F76 }
```

This example shows the color as background, it is applied via the CSS property "background".

To optimize and compress your CSS code, you can use our [online CSS compressor and optimizer](#) based on csstidy. If you want to create a linear or radial gradient as background or border, check our [CSS Gradient Generator](#).

Hey! You found this booklet interesting? Support Converting Colors with the new Membership Option!

The pro membership hides all ads, plus gives you double the colors in the color bucket, and more awesome pro features!

[Learn more, Memberships starting at \\$2.50/m!](#)

**Follow me
on Twitter!**

@ConvertingColor