

Converting Colors

Hex(E54A6F)

Have a look what the booklet for
Hex(E54A6F) contains.

Hex(E54A6F)	3
<i>Conversions</i>	4
<i>Details</i>	6
<i>Harmonies</i>	11
<i>Previews</i>	23
<i>Color Blindness Simulation</i>	26
<i>CSS Examples</i>	29

Color

Hex(E54A6F)

Conversions

Conversions Part 1

Format	Color
Hex	E54A6F
RGB	229, 74, 111
RGB Percent	90%, 29%, 44%
CMY	0.1020, 0.7098, 0.5647
CMYK	0.00, 0.68, 0.52, 0.10
HSL	346°, 75%, 59%
HSV	346°, 68%, 90%
XYZ	37.6311, 22.7033, 17.4377
YIQ	124.5630, 80.5030, 44.3670

Conversions

Conversions Part 2

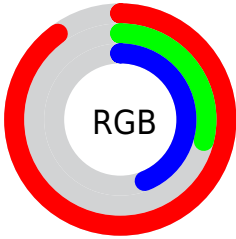
Format	Color
R_{YB}	229, 74, 111
Decimal	15026799
CIE _{Lab}	54.77, 62.12, 13.40
CIE _{LCh}	55, 63.552, 12.171
Yxy	22.7033, 0.4839, 0.2919
Android (android.graphics.Color)	4293216879 (0xFFE54A6F)
YUV	124.5630, -6.6866, 91.5912
Hunter-Lab	47.6479, 57.5908, 11.6552

Details

The Hex color **E54A6F** is a dark color, and the websafe version is hex **CC3366**. The color can be described as middle muted rose. A complement of this color would be **4AE5C0**, and the grayscale version is **7D7D7D**.

A 20% lighter version of the original color is **FF83A2**, and **A80040** is the 20% darker color. If you saturate the color by 10%, you get **E5335E**, and if you desaturate by 10%, it is **E56180**.

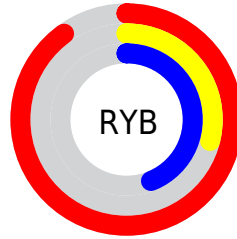
Distribution



Red (90%)

Green (29%)

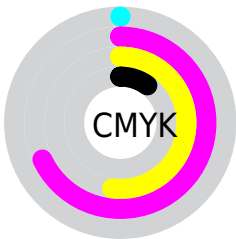
Blue (44%)



Red (90%)

Yellow (29%)

Blue (44%)

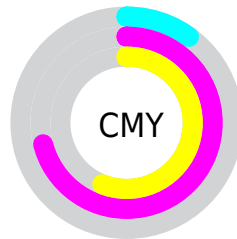


Cyan (0%)

Magenta (68%)

Yellow (52%)

Black (10%)



Cyan (10%)

Magenta (71%)

Yellow (56%)

Brightness & Saturation Gradients

These gradients show how the Hex color E54A6F changes by changing the brightness by 10 percent. The first figure shows a shift by +10% for each color and the second figure -10%.

Similar to the brightness gradients but the following saturation gradients show a change of the Hex color E54A6F by changing the saturation by 10% instead.

 E54A6F

 E54A6F

FFFFFF

 C62A57

 FF83A2

 A80040

 FFA0BD

 8A002A

 FFBDD9

 6C0016

 FFDAF5

 4F0001

 FFF8FF

 320002

 000000

 E54A6F

 E54A6F

 E5335E

 E56180

 E51C4C

 E57892

 E5053B

 E58FA3

 E50037

 E5A6B5

 E5BCC6

 E5D3D8

 E5EAE9

 E5FFFA

 E5FFFF

Harmonies

Analogous

The Analogous color harmony consists of three colors that are next to each other on the color wheel.



D551A6



E54A6F



D95C3B

Triad

The Triadic color harmony groups three colors that are evenly spaced from another and form a triangle on the color wheel.



E54A6F



499429



0092EC

Complementary

The Complementary color scheme is a pair of colors which are on the opposite of each other on the color wheel.



E54A6F



4AE5C0

Split Complementary

Split-complementary colors differ from the complementary color scheme. The scheme consists of three colors, the original color and two neighbors of the complement color.



009ACC



E54A6F



009A5F

Square

The Square scheme is like the rectangle color scheme, but the four colors are evenly spaced on the color wheel.



E54A6F



888800



009C99



2A82EF

Rectangle

The Rectangle color scheme consists of four colors that form a rectangle on the color wheel.



E54A6F



C56C1A



009C99



0096E4

Sweetspot

The Sweet Spot groups the original color and five complimentary colors.



E54A6F



FFCCD8



BE4AE5



806168



000000



808080

Same Dimension

The Same Dimension uses a secret algorithm to generate beautiful new colors.



E54A6F



FF3062



E5714A



73676A



B3002B



33000C

Inverse Universe

The Inverse Universe completely reimagines the original color for something new.



E54A6F



FF3062



4ABEE5



73676A



B3002B



33000C

Previews

White Background



This preview shows how the Hex color E54A6F looks on a white background.

Color Contrast Check

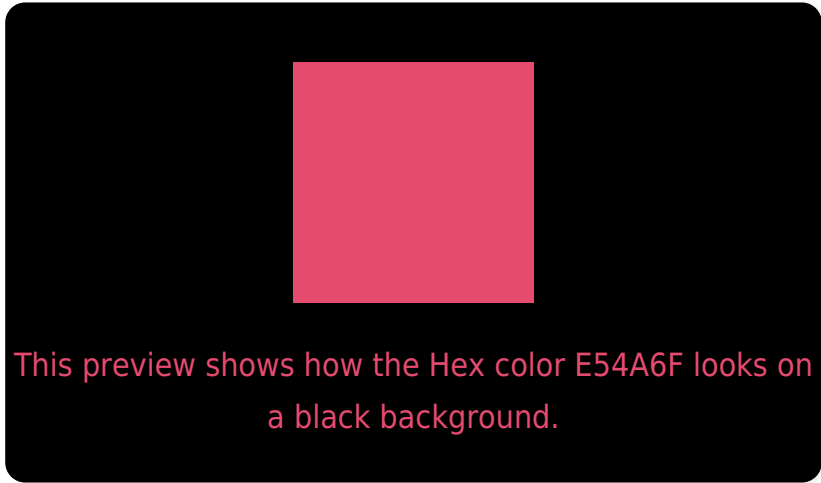
Large Text (above 18pt) WCAG AA ✓ Pass

Any Text WCAG AA ✗ Fail

Large Text (above 18pt) WCAG AAA ✗ Fail

Any Text WCAG AAA ✗ Fail

Black Background



Color Contrast Check

Large Text (above 18pt) WCAG AA ✓ Pass

Any Text WCAG AA ✓ Pass

Large Text (above 18pt) WCAG AAA ✓ Pass

Any Text WCAG AAA × Fail

If you want to check with other color combinations, try the [Color Contrast Checker](#).

Hex E54A6F Background



This preview shows how black text looks on a background with the Hex color E54A6F.

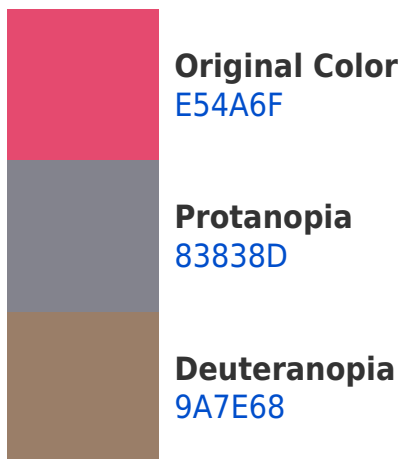


This preview shows how white text looks on a background with the Hex color E54A6F.

Color Blindness Simulation

Color vision deficiency is a very complex topic, and I could not describe the different causes any better than Wikipedia does, so if you want to learn more, you should check out their [article about color blindness](#).

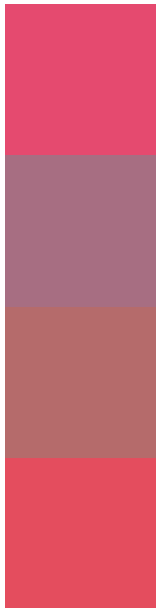
Dichromacy





Tritanopia
E34F54

Trichromacy



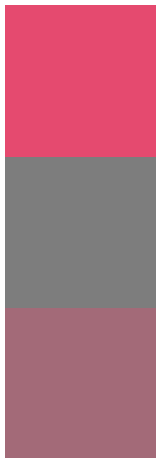
Original Color
E54A6F

Protanomaly
A76E82

Deuteranomaly
B56B6B

Tritanomaly
E44D5E

Monochromacy



Original Color
E54A6F

Achromatopsia
7D7D7D

Achromatomaly
A36A78

CSS Examples

Text

The CSS property to change the color of the text to Hex E54A6F is called "color". The color property can be set on classes, ids or directly on the HTML element.

This example shows how text in the color #E54A6F looks like.

```
.text, #text, p{  
    color:#E54A6F  
}
```

If you want to add a text shadow in that color use the text-shadow property, you can generate a text shadow directly with our [CSS Text Shadow Generator](#).

Here you see how black text with a 4 pixel #E54A6F colored shadow looks like.

```
.shadow{ text-shadow: 4px 4px 2px #E54A6F
}
```

Border

The CSS property to change the border of an element to Hex E54A6F is called "border". The border property can be set on classes, ids or directly on the HTML element.

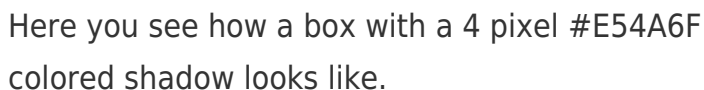
This example shows the color as border, it can be applied via the CSS property "border" or "border-color".

```
.border, #border, table{ border:4px solid
#E54A6F }
```

If only the border color should be changed use the property `border-color`.

```
.border{ border-color:#E54A6F }
```

If you want to add a box shadow in that color use:



Here you see how a box with a 4 pixel #E54A6F colored shadow looks like.

```
.boxshadow{ -moz-box-shadow:4px 4px 4px  
4px #E54A6F; -webkit-box-shadow:4px 4px  
4px 4px #E54A6F; box-shadow:4px 4px 4px  
4px #E54A6F }
```

Background

The CSS property to change the background color of an element to Hex E54A6F is called "background". The background property can be set on classes, ids or directly on the HTML element.

```
.background, #background, body{  
background:#E54A6F }
```

If only the background color should be changed can be used:

```
.background{ background-color:#E54A6F }
```

This example shows the color as background, it is applied via the CSS property "background".

To optimize and compress your CSS code, you can use our [online CSS compressor and optimizer](#) based on csstidy. If you want to create a linear or radial gradient as background or border, check our [CSS Gradient Generator](#).

Hey! You found this booklet interesting? Support Converting Colors with the new Membership Option!

The pro membership hides all ads, plus gives you double the colors in the color bucket, and more awesome pro features!

[Learn more, Memberships starting at \\$2.50/m!](#)

**Follow me
on Twitter!**

@ConvertingColor