

Converting Colors

Hex(E5637B)

Have a look what the booklet for
Hex(E5637B) contains.

| | |
|------------------------------------------------|----|
| Hex(E5637B) | 3 |
| <i>Conversions</i> | 4 |
| <i>Details</i> | 6 |
| <i>Harmonies</i> | 11 |
| <i>Previews</i> | 23 |
| <i>Color Blindness Simulation</i> | 26 |
| <i>CSS Examples</i> | 29 |

Color

Hex(E5637B)

Conversions

Conversions Part 1

| Format | Color |
|-------------|----------------------------|
| Hex | E5637B |
| RGB | 229, 99, 123 |
| RGB Percent | 90%, 39%, 48% |
| CMY | 0.1020, 0.6118, 0.5176 |
| CMYK | 0.00, 0.57, 0.46, 0.10 |
| HSL | 349°, 71%, 64% |
| HSV | 349°, 57%, 90% |
| XYZ | 40.3501, 27.0118, 21.8260 |
| YIQ | 140.6060, 69.7760, 35.0240 |

Conversions

Conversions Part 2

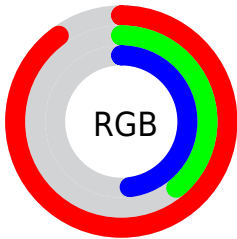
| Format | Color |
|-------------------------------------|-------------------------------|
| R _Y B | 229, 99, 123 |
| Decimal | 15033211 |
| CIE Lab | 58.99, 52.57, 12.24 |
| CIE LCh | 59, 53.977, 13.102 |
| Yxy | 27.0118, 0.4524, 0.3029 |
| Android (android.graphics.Color) | 4293223291 (0xFFE5637B) |
| YUV | 140.6060, -8.6798, 77.5215 |
| Hunter-Lab | 51.9728, 47.6294, 11.4821 |

Details

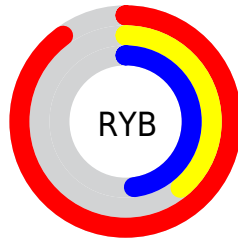
The Hex color **E5637B** is a light color, and the websafe version is hex **CC6666**. A complement of this color would be **63E5CD**, and the grayscale version is **8D8D8D**.

A 20% lighter version of the original color is **FF9AAF**, and **A92B4B** is the 20% darker color. If you saturate the color by 10%, you get **E54C68**, and if you desaturate by 10%, it is **E57A8E**.

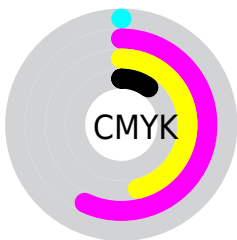
Distribution



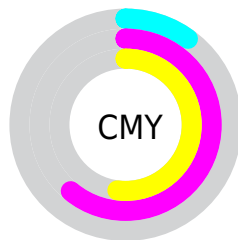
- Red (90%)
- Green (39%)
- Blue (48%)



- Red (90%)
- Yellow (39%)
- Blue (48%)



- Cyan (0%)
- Magenta (57%)
- Yellow (46%)
- Black (10%)



- Cyan (10%)
- Magenta (61%)
- Yellow (52%)

Brightness & Saturation Gradients

These gradients show how the Hex color E5637B changes by changing the brightness by 10 percent. The first figure shows a shift by +10% for each color and the second figure -10%.

Similar to the brightness gradients but the following saturation gradients show a change of the Hex color E5637B by changing the saturation by 10% instead.

 E5637B

 E5637B

FFFFFF

 C74862

 FF9AAF

 A92B4B

 FFB6CB

 8C0234

 FFD3E7

 6F001F

 FFF0FF

 520007

 380002

 0D0000

 000000

 E5637B

 E5637B

 E54C68

 E57A8E

 E53556

 E591A0

 E51E43

 E5A8B3

 E50730

 E5BFC6

 E5002A

 E5D6D8

 E5ECEB

 E5FFFE

 E5FFFF

Harmonies

Analogous

The Analogous color harmony consists of three colors that are next to each other on the color wheel.



D667AB



E5637B



DB6F4F

Triad

The Triadic color harmony groups three colors that are evenly spaced from another and form a triangle on the color wheel.



E5637B



5F9D45



009BE8

Complementary

The Complementary color scheme is a pair of colors which are on the opposite of each other on the color wheel.



E5637B



63E5CD

Split Complementary

Split-complementary colors differ from the complementary color scheme. The scheme consists of three colors, the original color and two neighbors of the complement color.



00A3CE



E5637B



00A371

Square

The Square scheme is like the rectangle color scheme, but the four colors are evenly spaced on the color wheel.



E5637B



949229



00A5A2



5C8CEA

Rectangle

The Rectangle color scheme consists of four colors that form a rectangle on the color wheel.



E5637B



C97C38



00A5A2



009EE2

Sweetspot

The Sweet Spot groups the original color and five complimentary colors.



E5637B



FFD4DC



CB63E5



80666B



000000



808080

Same Dimension

The Same Dimension uses a secret algorithm to generate beautiful new colors.



E5637B



FF5272



E58A63



736769



B30021



330009

Inverse Universe

The Inverse Universe completely reimagines the original color for something new.



E5637B



FF5272



63BEE5



736769



B30021



330009

Previews

White Background



This preview shows how the Hex color E5637B looks on a white background.

Color Contrast Check

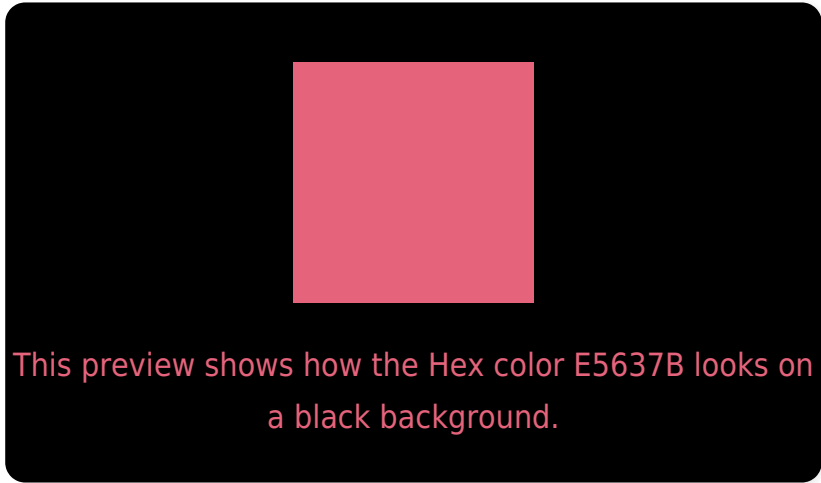
Large Text (above 18pt) WCAG AA ✓ Pass

Any Text WCAG AA × Fail

Large Text (above 18pt) WCAG AAA × Fail

Any Text WCAG AAA × Fail

Black Background



Color Contrast Check

Large Text (above 18pt) WCAG AA ✓ Pass

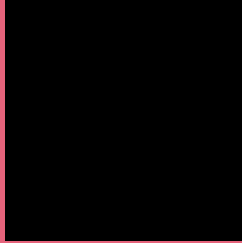
Any Text WCAG AA ✓ Pass

Large Text (above 18pt) WCAG AAA ✓ Pass

Any Text WCAG AAA × Fail

If you want to check with other color combinations, try the [Color Contrast Checker](#).

Hex E5637B Background



This preview shows how black text looks on a background with the Hex color E5637B.

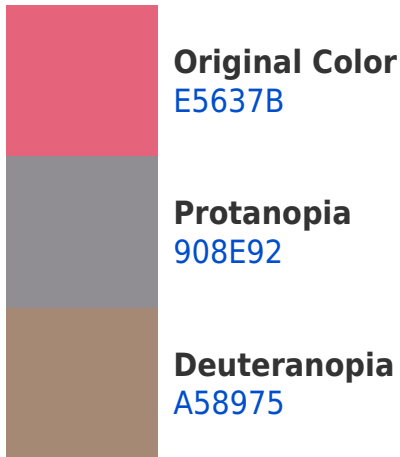



This preview shows how white text looks on a background with the Hex color E5637B.

Color Blindness Simulation

Color vision deficiency is a very complex topic, and I could not describe the different causes any better than Wikipedia does, so if you want to learn more, you should check out their [article about color blindness](#).

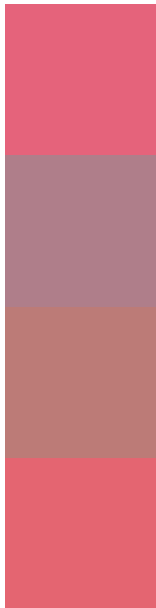
Dichromacy





Tritanopia
E4666C

Trichromacy



Original Color
E5637B

Protanomaly
AF7E8A

Deuteranomaly
BC7B77

Tritanomaly
E46571

Monochromacy



Original Color
E5637B

Achromatopsia
8D8D8D

Achromatomaly
AD7E86

CSS Examples

Text

The CSS property to change the color of the text to Hex E5637B is called "color". The color property can be set on classes, ids or directly on the HTML element.

This example shows how text in the color #E5637B looks like.

```
.text, #text, p{  
    color:#E5637B  
}
```

If you want to add a text shadow in that color use the text-shadow property, you can generate a text shadow directly with our [CSS Text Shadow Generator](#).

Here you see how black text with a 4 pixel #E5637B colored shadow looks like.

```
.shadow{ text-shadow: 4px 4px 2px #E5637B
}
```

Border

The CSS property to change the border of an element to Hex E5637B is called "border". The border property can be set on classes, ids or directly on the HTML element.

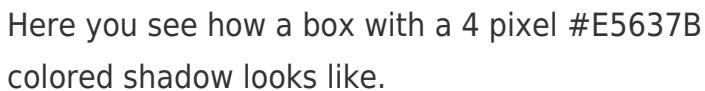
This example shows the color as border, it can be applied via the CSS property "border" or "border-color".

```
.border, #border, table{ border:4px solid
#E5637B }
```

If only the border color should be changed use the property `border-color`.

```
.border{ border-color:#E5637B }
```

If you want to add a box shadow in that color use:



Here you see how a box with a 4 pixel #E5637B colored shadow looks like.

```
.boxshadow{ -moz-box-shadow:4px 4px 4px  
4px #E5637B; -webkit-box-shadow:4px 4px  
4px 4px #E5637B; box-shadow:4px 4px 4px  
4px #E5637B }
```

Background

The CSS property to change the background color of an element to Hex E5637B is called "background". The background property can be set on classes, ids or directly on the HTML element.

```
.background, #background, body{  
background:#E5637B }
```

If only the background color should be changed can be used:

```
.background{ background-color:#E5637B }
```

This example shows the color as background, it is applied via the CSS property "background".

To optimize and compress your CSS code, you can use our [online CSS compressor and optimizer](#) based on csstidy. If you want to create a linear or radial gradient as background or border, check our [CSS Gradient Generator](#).

Hey! You found this booklet interesting? Support Converting Colors with the new Membership Option!

The pro membership hides all ads, plus gives you double the colors in the color bucket, and more awesome pro features!

[Learn more, Memberships starting at \\$2.50/m!](#)

**Follow me
on Twitter!**

@ConvertingColor