

# Converting Colors

Hex(E58091)

Have a look what the booklet for  
Hex(E58091) contains.

<b>Hex(E58091)</b> .....	3
<b><i>Conversions</i></b> .....	4
<b><i>Details</i></b> .....	6
<b><i>Harmonies</i></b> .....	11
<b><i>Previews</i></b> .....	23
<b><i>Color Blindness Simulation</i></b> .....	26
<b><i>CSS Examples</i></b> .....	29

# **Color**

**Hex(E58091)**

# Conversions

## Conversions Part 1

Format	Color
Hex	E58091
RGB	229, 128, 145
RGB Percent	90%, 50%, 57%
CMY	0.1020, 0.4980, 0.4314
CMYK	0.00, 0.44, 0.37, 0.10
HSL	350°, 66%, 70%
HSV	350°, 44%, 90%
XYZ	45.1431, 34.1407, 30.9986
YIQ	160.1370, 54.7390, 26.6990

# Conversions

## Conversions Part 2

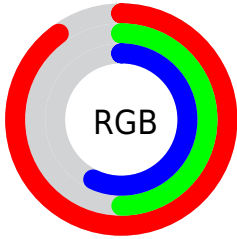
<b>Format</b>	<b>Color</b>
R <sub>Y</sub> B	229, 128, 145
Decimal	15040657
CIE Lab	65.07, 40.65, 8.21
CIE LCh	65, 41.475, 11.421
Yxy	34.1407, 0.4093, 0.3096
Android (android.graphics.Color)	4293230737 (0xFFE58091)
YUV	160.1370, -7.4625, 60.3929
Hunter-Lab	58.4300, 35.6567, 9.4462

# Details

The Hex color **E58091** is a light color, and the websafe version is hex **FF9999**. A complement of this color would be **80E5D4**, and the grayscale version is **A0A0A0**.

A 20% lighter version of the original color is **FFB6C7**, and **AB4C5F** is the 20% darker color. If you saturate the color by 10%, you get **E5697E**, and if you desaturate by 10%, it is **E597A4**.

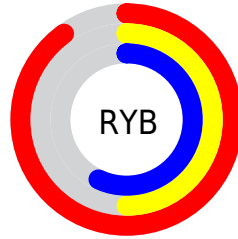
# Distribution



Red (90%)

Green (50%)

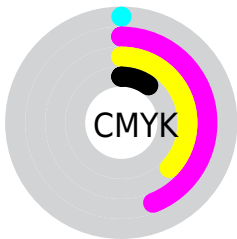
Blue (57%)



Red (90%)

Yellow (50%)

Blue (57%)

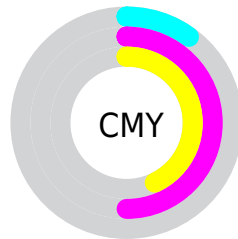


Cyan (0%)

Magenta (44%)

Yellow (37%)

Black (10%)



Cyan (10%)

Magenta (50%)

Yellow (43%)

# Brightness & Saturation Gradients

These gradients show how the Hex color E58091 changes by changing the brightness by 10 percent. The first figure shows a shift by +10% for each color and the second figure -10%.

Similar to the brightness gradients but the following saturation gradients show a change of the Hex color E58091 by changing the saturation by 10% instead.



 E58091

 E58091

FFFFFF

 C86677

 FFB6C7

 AB4C5F

 FFD3E3

 8E3247

 FFEFFF

 721731

 57001C

 3D0001

 210001

 000000

 E58091

 E58091

 E5697E

 E597A4

 E5526B

 E5AEB7

 E53B58

 E5C5CA

 E52445

 E5DCDD

 E50D32

 E5F3F0

 E50027

 E5FFFF

# Harmonies

## Analogous

The Analogous color harmony consists of three colors that are next to each other on the color wheel.



D783B6



E58091



DF876F

# Triad

The Triadic color harmony groups three colors that are evenly spaced from another and form a triangle on the color wheel.



E58091



7FAA65



29A8E4

# Complementary

The Complementary color scheme is a pair of colors which are on the opposite of each other on the color wheel.



E58091



80E5D4

# Split Complementary

Split-complementary colors differ from the complementary color scheme. The scheme consists of three colors, the original color and two neighbors of the complement color.



00AFCE



E58091



4CB085

# Square

The Square scheme is like the rectangle color scheme, but the four colors are evenly spaced on the color wheel.



E58091



A7A053



00B1AB



7D9DE6

# Rectangle

The Rectangle color scheme consists of four colors that form a rectangle on the color wheel.



E58091



D28F5D



00B1AB



00ABDE



# Sweetspot

The Sweet Spot groups the original color and five complimentary colors.



E58091



FFDEE3



D280E5



806B6F



000000



808080



# Same Dimension

The Same Dimension uses a secret algorithm to generate beautiful new colors.



E58091



FF788F



E5A080



736769



B3001E



330009



# Inverse Universe

The Inverse Universe completely reimagines the original color for something new.



E58091



FF788F



80C5E5



736769



B3001E



330009



# Previews

## White Background



This preview shows how the Hex color E58091 looks on a white background.

## Color Contrast Check

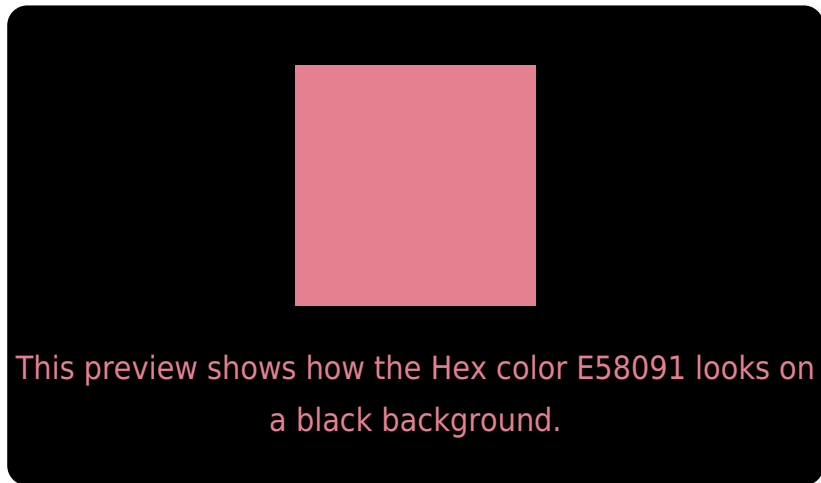
Large Text (above 18pt) WCAG AA × Fail

Any Text WCAG AA × Fail

Large Text (above 18pt) WCAG AAA × Fail

Any Text WCAG AAA × Fail

# Black Background



## Color Contrast Check

Large Text (above 18pt) WCAG AA ✓ Pass

Any Text WCAG AA ✓ Pass

Large Text (above 18pt) WCAG AAA ✓ Pass

Any Text WCAG AAA ✓ Pass

If you want to check with other color combinations, try the [Color Contrast Checker](#).



## Hex E58091 Background



This preview shows how black text looks on a background with the Hex color E58091.

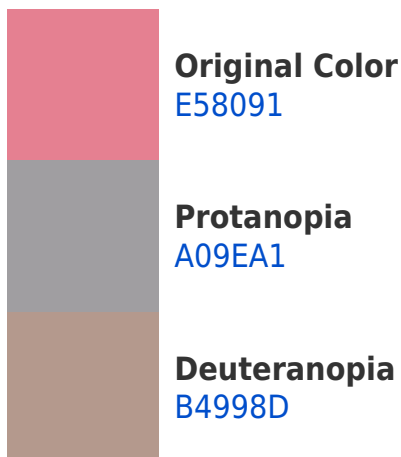


This preview shows how white text looks on a background with the Hex color E58091.

# Color Blindness Simulation

Color vision deficiency is a very complex topic, and I could not describe the different causes any better than Wikipedia does, so if you want to learn more, you should check out their [article about color blindness](#).

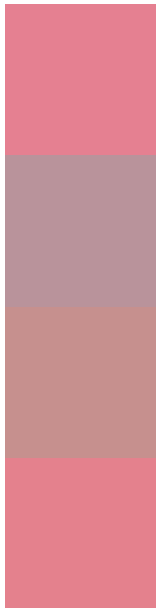
## Dichromacy





**Tritanopia**  
E4818B

# Trichromacy



**Original Color**  
E58091

**Protanomaly**  
B9939B

**Deuteranomaly**  
C6908E

**Tritanomaly**  
E4818D

# Monochromacy



**Original Color**  
E58091

**Achromatopsia**  
A0A0A0

**Achromatomaly**  
B9949B

# CSS Examples

## Text

The CSS property to change the color of the text to Hex E58091 is called "color". The color property can be set on classes, ids or directly on the HTML element.

This example shows how text in the color #E58091 looks like.

```
.text, #text, p{  
    color:#E58091  
}
```

If you want to add a text shadow in that color use the text-shadow property, you can generate a text shadow directly with our [CSS Text Shadow Generator](#).

Here you see how black text with a 4 pixel #E58091 colored shadow looks like.

```
.shadow{ text-shadow: 4px 4px 2px #E58091
}
```

## Border

The CSS property to change the border of an element to Hex E58091 is called "border". The border property can be set on classes, ids or directly on the HTML element.

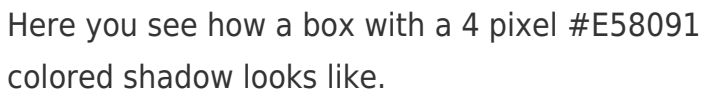
This example shows the color as border, it can be applied via the CSS property "border" or "border-color".

```
.border, #border, table{ border:4px solid
#E58091 }
```

If only the border color should be changed use the property `border-color`.

```
.border{ border-color:#E58091 }
```

If you want to add a box shadow in that color use:



Here you see how a box with a 4 pixel #E58091 colored shadow looks like.

```
.boxshadow{ -moz-box-shadow:4px 4px 4px  
4px #E58091; -webkit-box-shadow:4px 4px  
4px 4px #E58091; box-shadow:4px 4px 4px  
4px #E58091 }
```

# Background

The CSS property to change the background color of an element to Hex E58091 is called "background". The background property can be set on classes, ids or directly on the HTML element.

```
.background, #background, body{  
background:#E58091 }
```

If only the background color should be changed can be used:

```
.background{ background-color:#E58091 }
```

This example shows the color as background, it is applied via the CSS property "background".

To optimize and compress your CSS code, you can use our [online CSS compressor and optimizer](#) based on csstidy. If you want to create a linear or radial gradient as background or border, check our [CSS Gradient Generator](#).



Hey! You found this booklet interesting? Support Converting Colors with the new Membership Option!

The pro membership hides all ads, plus gives you double the colors in the color bucket, and more awesome pro features!

**[Learn more, Memberships starting at \\$2.50/m!](#)**

**Follow me  
on Twitter!**

@ConvertingColor