

Converting Colors

Hex(E58668)

Have a look what the booklet for
Hex(E58668) contains.

Hex(E58668)	3
<i>Conversions</i>	4
<i>Details</i>	6
<i>Harmonies</i>	11
<i>Previews</i>	23
<i>Color Blindness Simulation</i>	26
<i>CSS Examples</i>	29

Color

Hex(E58668)

Conversions

Conversions Part 1

Format	Color
Hex	E58668
RGB	229, 134, 104
RGB Percent	90%, 53%, 41%
CMY	0.1020, 0.4745, 0.5922
CMYK	0.00, 0.41, 0.55, 0.10
HSL	14°, 71%, 65%
HSV	14°, 55%, 90%
XYZ	43.3369, 34.7077, 17.5119
YIQ	158.9850, 66.2500, 10.8100

Conversions

Conversions Part 2

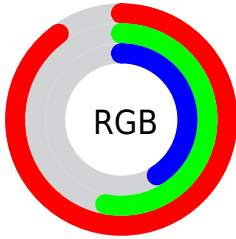
Format	Color
R _Y B	229, 143, 104
Decimal	15042152
CIE Lab	65.52, 33.46, 31.79
CIE LCh	66, 46.149, 43.536
Yxy	34.7077, 0.4535, 0.3632
Android (android.graphics.Color)	4293232232 (0xFFE58668)
YUV	158.9850, -27.1076, 61.4032
Hunter-Lab	58.9132, 28.2074, 23.6154

Details

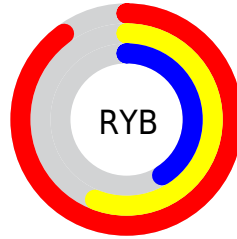
The Hex color **E58668** is a light color, and the websafe version is hex **FF9966**. A complement of this color would be **68C7E5**, and the grayscale version is **9F9F9F**.

A 20% lighter version of the original color is **FFBC9C**, and **A95338** is the 20% darker color. If you saturate the color by 10%, you get **E57551**, and if you desaturate by 10%, it is **E5977F**.

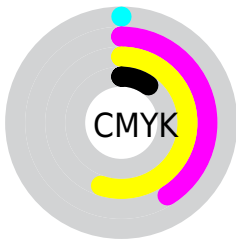
Distribution



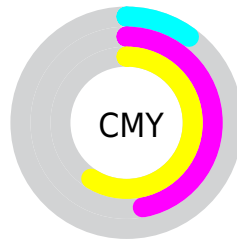
- Red (90%)
- Green (53%)
- Blue (41%)



- Red (90%)
- Yellow (56%)
- Blue (41%)



- Cyan (0%)
- Magenta (41%)
- Yellow (55%)
- Black (10%)



- Cyan (10%)
- Magenta (47%)
- Yellow (59%)

Brightness & Saturation Gradients

These gradients show how the Hex color E58668 changes by changing the brightness by 10 percent. The first figure shows a shift by +10% for each color and the second figure -10%.

Similar to the brightness gradients but the following saturation gradients show a change of the Hex color E58668 by changing the saturation by 10% instead.

 E58668

 E58668

FFFFFF

 C76C50

 FFBC9C

 A95338

 FFD8B7

 8C3A22

 FFF5D2

 70220C

 FFFFEF

 540600

 380000

 1B0001

 000000

 E58668

 E58668

 E57551

 E5977F

 E5633A

 E5A996

 E55223

 E5BAAD

 E5400C

 E5CCCC

 E53700

 E5DDDB

 E5EEF1

 E5FFFF

Harmonies

Analogous

The Analogous color harmony consists of three colors that are next to each other on the color wheel.



EE7D8E



E58668



CB954F

Triad

The Triadic color harmony groups three colors that are evenly spaced from another and form a triangle on the color wheel.



E58668



38B386



7D9DEF

Complementary

The Complementary color scheme is a pair of colors which are on the opposite of each other on the color wheel.



E58668



68C7E5

Split Complementary

Split-complementary colors differ from the complementary color scheme. The scheme consists of three colors, the original color and two neighbors of the complement color.



00AAEE



E58668



00B4B1

Square

The Square scheme is like the rectangle color scheme, but the four colors are evenly spaced on the color wheel.



E58668



78AD61



00B2D7



BB8DDB

Rectangle

The Rectangle color scheme consists of four colors that form a rectangle on the color wheel.



E58668



B39E4A



00B2D7



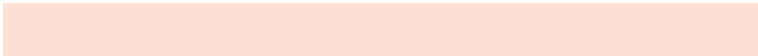
61A2F1

Sweetspot

The Sweet Spot groups the original color and five complimentary colors.



E58668



FFE0D6



E568C8



806D67



000000



808080

Same Dimension

The Same Dimension uses a secret algorithm to generate beautiful new colors.



E58668



FF7F57



E5C468



736A67



B32B00



330C00

Inverse Universe

The Inverse Universe completely reimagines the original color for something new.



68C7E5



57D7FF



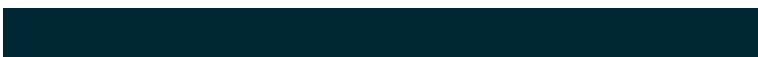
6889E5



677073



0088B3



002733

Previews

White Background



This preview shows how the Hex color E58668 looks on a white background.

Color Contrast Check

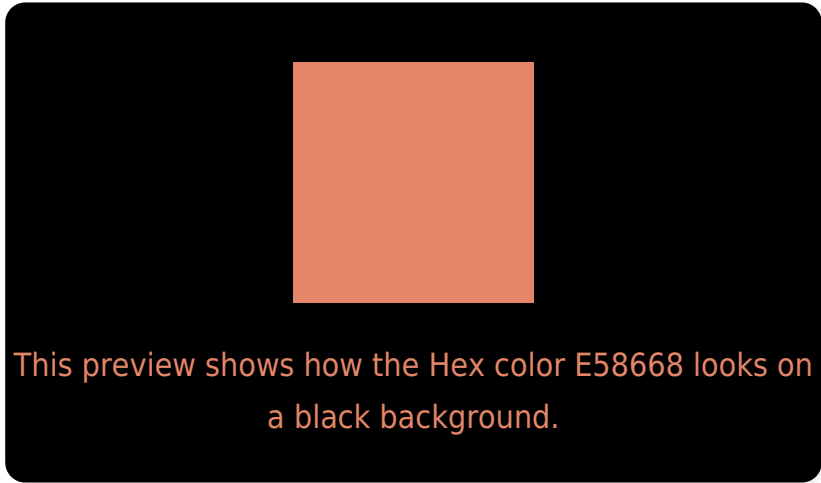
Large Text (above 18pt) WCAG AA × Fail

Any Text WCAG AA × Fail

Large Text (above 18pt) WCAG AAA × Fail

Any Text WCAG AAA × Fail

Black Background



Color Contrast Check

Large Text (above 18pt) WCAG AA ✓ Pass

Any Text WCAG AA ✓ Pass

Large Text (above 18pt) WCAG AAA ✓ Pass

Any Text WCAG AAA ✓ Pass

If you want to check with other color combinations, try the [Color Contrast Checker](#).

Hex E58668 Background



This preview shows how black text looks on a background with the Hex color E58668.



This preview shows how white text looks on a background with the Hex color E58668.

Color Blindness Simulation

Color vision deficiency is a very complex topic, and I could not describe the different causes any better than Wikipedia does, so if you want to learn more, you should check out their [article about color blindness](#).

Dichromacy



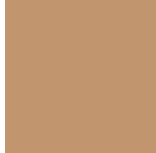


Tritanopia
E7818B

Trichromacy



Original Color
E58668



Protanomaly
C1966E



Deuteranomaly
CE9165

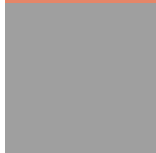


Tritanomaly
E6837E

Monochromacy



Original Color
E58668



Achromatopsia
9F9F9F



Achromatomaly
B8968B

CSS Examples

Text

The CSS property to change the color of the text to Hex E58668 is called "color". The color property can be set on classes, ids or directly on the HTML element.

This example shows how text in the color #E58668 looks like.

```
.text, #text, p{  
    color:#E58668  
}
```

If you want to add a text shadow in that color use the text-shadow property, you can generate a text shadow directly with our [CSS Text Shadow Generator](#).

Here you see how black text with a 4 pixel #E58668 colored shadow looks like.

```
.shadow{ text-shadow: 4px 4px 2px #E58668 }  
}
```

Border

The CSS property to change the border of an element to Hex E58668 is called "border". The border property can be set on classes, ids or directly on the HTML element.

This example shows the color as border, it can be applied via the CSS property "border" or "border-color".

```
.border, #border, table{ border:4px solid #E58668 }  
}
```

If only the border color should be changed use the property `border-color`.

```
.border{ border-color:#E58668 }
```

If you want to add a box shadow in that color use:

Here you see how a box with a 4 pixel #E58668 colored shadow looks like.

```
.boxshadow{ -moz-box-shadow:4px 4px 4px  
4px #E58668; -webkit-box-shadow:4px 4px  
4px 4px #E58668; box-shadow:4px 4px 4px  
4px #E58668 }
```

Background

The CSS property to change the background color of an element to Hex E58668 is called "background". The background property can be set on classes, ids or directly on the HTML element.

```
.background, #background, body{  
background:#E58668 }
```

If only the background color should be changed can be used:

```
.background{ background-color:#E58668 }
```

This example shows the color as background, it is applied via the CSS property "background".

To optimize and compress your CSS code, you can use our [online CSS compressor and optimizer](#) based on csstidy. If you want to create a linear or radial gradient as background or border, check our [CSS Gradient Generator](#).

Hey! You found this booklet interesting? Support Converting Colors with the new Membership Option!

The pro membership hides all ads, plus gives you double the colors in the color bucket, and more awesome pro features!

[Learn more, Memberships starting at \\$2.50/m!](#)

**Follow me
on Twitter!**

@ConvertingColor