

Converting Colors

Hex(E599AC)

Have a look what the booklet for
Hex(E599AC) contains.

Hex(E599AC)	3
<i>Conversions</i>	4
<i>Details</i>	6
<i>Harmonies</i>	11
<i>Previews</i>	23
<i>Color Blindness Simulation</i>	26
<i>CSS Examples</i>	29

Color

Hex(E599AC)

Conversions

Conversions Part 1

Format	Color
Hex	E599AC
RGB	229, 153, 172
RGB Percent	90%, 60%, 67%
CMY	0.1020, 0.4000, 0.3255
CMYK	0.00, 0.33, 0.25, 0.10
HSL	345°, 59%, 75%
HSV	345°, 33%, 90%
XYZ	51.1507, 42.4190, 44.5215
YIQ	177.8900, 39.1970, 22.0210

Conversions

Conversions Part 2

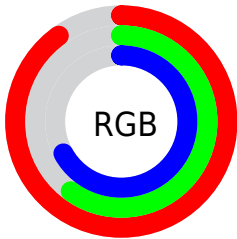
Format	Color
R_{YB}	229, 153, 172
Decimal	15047084
CIE _{Lab}	71.16, 31.02, 1.83
CIE _{LCh}	71, 31.069, 3.374
Yxy	42.4190, 0.3704, 0.3072
Android (android.graphics.Color)	4293237164 (0xFFE599AC)
YUV	177.8900, -2.9038, 44.8235
Hunter-Lab	65.1299, 26.2103, 5.0615

Details

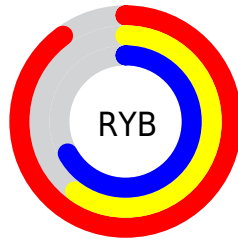
The Hex color **E599AC** is a light color, and the websafe version is hex **CC9999**. A complement of this color would be **99E5D2**, and the grayscale version is **B2B2B2**.

A 20% lighter version of the original color is **FFD0E3**, and **AC6578** is the 20% darker color. If you saturate the color by 10%, you get **E5829B**, and if you desaturate by 10%, it is **E5B0BD**.

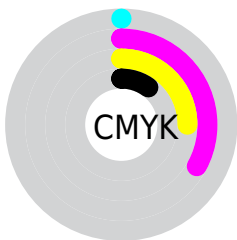
Distribution



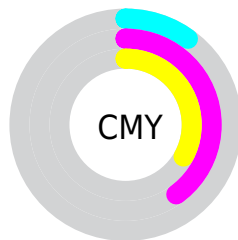
- Red (90%)
- Green (60%)
- Blue (67%)



- Red (90%)
- Yellow (60%)
- Blue (67%)



- Cyan (0%)
- Magenta (33%)
- Yellow (25%)
- Black (10%)



- Cyan (10%)
- Magenta (40%)
- Yellow (33%)

Brightness & Saturation Gradients

These gradients show how the Hex color E599AC changes by changing the brightness by 10 percent. The first figure shows a shift by +10% for each color and the second figure -10%.

Similar to the brightness gradients but the following saturation gradients show a change of the Hex color E599AC by changing the saturation by 10% instead.

 E599AC

 E599AC

FFFFFF

 C87F91

 FFD0E3

 AC6578

 FFEDFF

 904C5F

 753448

 5B1C31

 42021C

 2D0001

 000000

 E599AC

 E599AC

 E5829B

 E5B0BD

 E56B8A

 E5C7CE

 E55478

 E5DEE0

 E53D67

 E5F5F1

 E52756

 E5FFFF

 E51045

 E50039

Harmonies

Analogous

The Analogous color harmony consists of three colors that are next to each other on the color wheel.



D59DC8



E599AC



E59C90

Triad

The Triadic color harmony groups three colors that are evenly spaced from another and form a triangle on the color wheel.



E599AC



A0B67E



65B8E0

Complementary

The Complementary color scheme is a pair of colors which are on the opposite of each other on the color wheel.



E599AC



99E5D2

Split Complementary

Split-complementary colors differ from the complementary color scheme. The scheme consists of three colors, the original color and two neighbors of the complement color.



52BDCC



E599AC



7FBB94

Square

The Square scheme is like the rectangle color scheme, but the four colors are evenly spaced on the color wheel.



E599AC



BFAD76



60BEB1



8EB0E6

Rectangle

The Rectangle color scheme consists of four colors that form a rectangle on the color wheel.



E599AC



DDA182



60BEB1



5BBADB

Sweetspot

The Sweet Spot groups the original color and five complimentary colors.



E599AC



FFE6EC



D299E5



807074



000000



808080

Same Dimension

The Same Dimension uses a secret algorithm to generate beautiful new colors.



E599AC



FF99B3



E5AC99



73676A



B3002D



33000D

Inverse Universe

The Inverse Universe completely reimagines the original color for something new.



E599AC



FF99B3



99D2E5



73676A



B3002D



33000D

Previews

White Background



This preview shows how the Hex color E599AC looks on a white background.

Color Contrast Check

Large Text (above 18pt) WCAG AA × Fail

Any Text WCAG AA × Fail

Large Text (above 18pt) WCAG AAA × Fail

Any Text WCAG AAA × Fail

Black Background



Color Contrast Check

Large Text (above 18pt) WCAG AA ✓ Pass

Any Text WCAG AA ✓ Pass

Large Text (above 18pt) WCAG AAA ✓ Pass

Any Text WCAG AAA ✓ Pass

If you want to check with other color combinations, try the [Color Contrast Checker](#).

Hex E599AC Background



This preview shows how black text looks on a background with the Hex color E599AC.

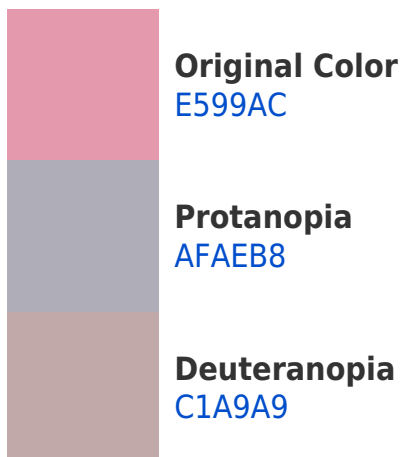


This preview shows how white text looks on a background with the Hex color E599AC.

Color Blindness Simulation

Color vision deficiency is a very complex topic, and I could not describe the different causes any better than Wikipedia does, so if you want to learn more, you should check out their [article about color blindness](#).

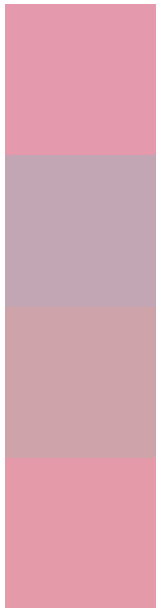
Dichromacy





Tritanopia
E49AA6

Trichromacy



Original Color
E599AC

Protanomaly
C3A6B4

Deuteranomaly
CEA3AA

Tritanomaly
E49AA8

Monochromacy



Original Color
E599AC

Achromatopsia
B2B2B2

Achromatomaly
C5A9B0

CSS Examples

Text

The CSS property to change the color of the text to Hex E599AC is called "color". The color property can be set on classes, ids or directly on the HTML element.

This example shows how text in the color #E599AC looks like.

```
.text, #text, p{  
    color:#E599AC  
}
```

If you want to add a text shadow in that color use the text-shadow property, you can generate a text shadow directly with our [CSS Text Shadow Generator](#).

Here you see how black text with a 4 pixel #E599AC colored shadow looks like.

```
.shadow{ text-shadow: 4px 4px 2px #E599AC
}
```

Border

The CSS property to change the border of an element to Hex E599AC is called "border". The border property can be set on classes, ids or directly on the HTML element.

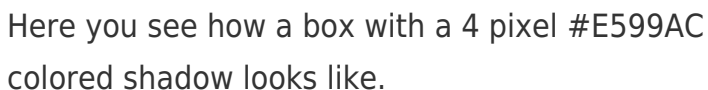
This example shows the color as border, it can be applied via the CSS property "border" or "border-color".

```
.border, #border, table{ border:4px solid
#E599AC }
```

If only the border color should be changed use the property `border-color`.

```
.border{ border-color:#E599AC }
```

If you want to add a box shadow in that color use:



Here you see how a box with a 4 pixel #E599AC colored shadow looks like.

```
.boxshadow{ -moz-box-shadow:4px 4px 4px  
4px #E599AC; -webkit-box-shadow:4px 4px  
4px 4px #E599AC; box-shadow:4px 4px 4px  
4px #E599AC }
```

Background

The CSS property to change the background color of an element to Hex E599AC is called "background". The background property can be set on classes, ids or directly on the HTML element.

```
.background, #background, body{  
background:#E599AC }
```

If only the background color should be changed can be used:

```
.background{ background-color:#E599AC }
```

This example shows the color as background, it is applied via the CSS property "background".

To optimize and compress your CSS code, you can use our [online CSS compressor and optimizer](#) based on csstidy. If you want to create a linear or radial gradient as background or border, check our [CSS Gradient Generator](#).

Hey! You found this booklet interesting? Support Converting Colors with the new Membership Option!

The pro membership hides all ads, plus gives you double the colors in the color bucket, and more awesome pro features!

[Learn more, Memberships starting at \\$2.50/m!](#)

**Follow me
on Twitter!**

@ConvertingColor